

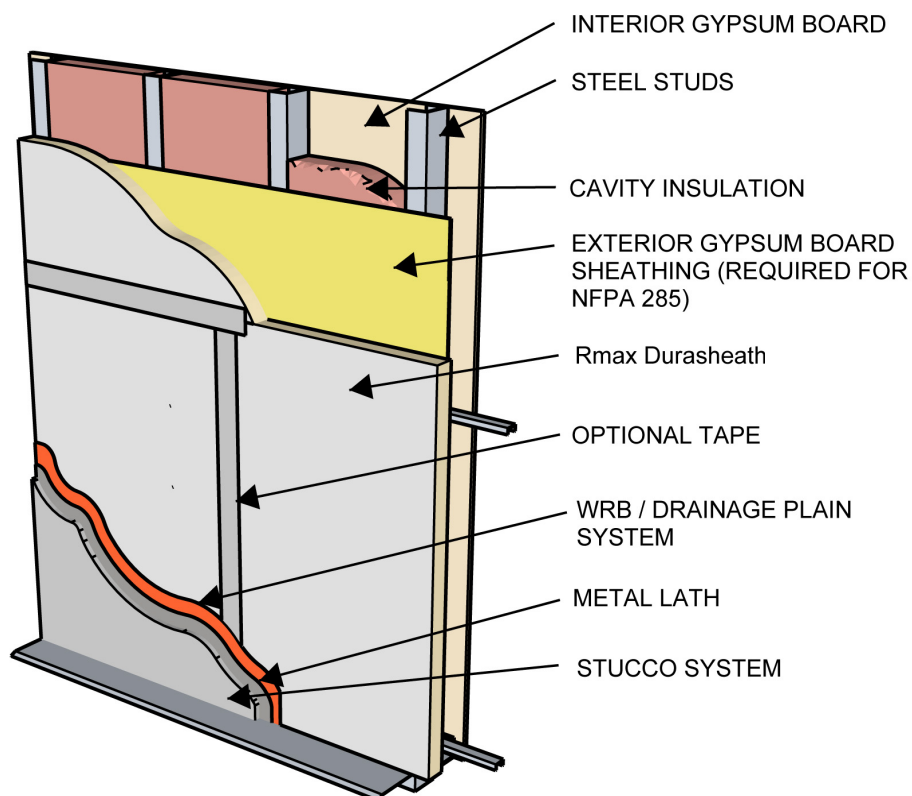
Durasheath®: Insulation for the Building Envelope

Exterior Wall Application (Type I-IV)

Durasheath® can be specified in exterior walls of buildings of any height utilizing brick veneer, stucco, limestone or natural stone veneer, cast artificial stone veneer, MCM, ACM, terracotta cladding, metal skin, cement board siding, stone/aluminum honeycomb composite panels, AAC panels or thin brick. Durasheath® has been successfully tested per NFPA 285. For specific details, requirements and limitations of various components within NFPA 285 approved assemblies, contact the Rmax Technical Department at technical@rmax.com.

For stucco applications, install the Durasheath® with enough fasteners to hold it in place until the lathe can be fastened through the insulation back to the structural sheathing or studs. Depending on fastener capacity and temporary conditions (wind, wear and tear, etc.) eight fasteners per 4'x8' board is generally sufficient. A separate WRB/drainage system should be included within the system as required by code. Apply WRB system, lathe and stucco system per manufacturer's instructions.

Refer to Durasheath® data sheet for additional application/installation, compliances, thermal and physical properties, limitations and warnings.



Notes:

1. Stud walls must be properly braced for lateral loads according to the requirements of local Building Codes.

*Warranty: See Rmax "Sales Policy" and applicable warranties for terms and conditions. Rmax does not assume any responsibility or liability for the performance of any products other than those manufactured by Rmax. **NOTE: All Rmax products must be tarped, placed on skids and kept dry before and throughout construction.***

Revision 08-01-2019