

Product Application Sheet

DURASHEATH®

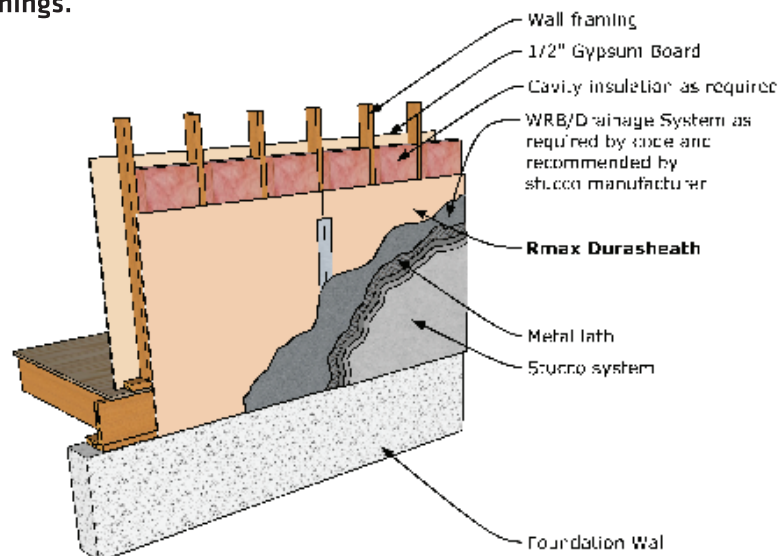
EXTERIOR STUCCO APPLICATION

Durasheath® may be used as continuous insulation under hard coat stucco finishes. It may be secured to wood studs with bugle-head screws, galvanized roofing nails or common-nails driven through cap washers. Cover the Durasheath® with a suitable water-resistive barrier (WRB)/drainage system. Then, attach conventional metal wire lath and stucco system to framing per the manufacturer's recommendations.

Alternately, the WRB/drainage system can be installed behind the Durasheath®. In this scenario, the lathe and stucco system can be installed directly over the Durasheath® per the stucco manufacturer's recommendations. The joints of Durasheath® can be covered with mesh tape to help avoid shadow lines.

In all applications, it is the responsibility of the designer and stucco system manufacturer to determine proper placement/order of the various layers to meet local Building Code and provide adequate moisture control.

Refer to Durasheath® Product Data Sheet for additional application/installation, compliances, thermal and physical properties, limitations and warnings.

**Notes:**

1. Stud walls must be properly braced for lateral loads according to the requirements of local Building Codes.
2. Include vapor retarder as required based on climate zone, design and local Building Code.

WARRANTY

See Rmax® sales policy and limited warranties for terms and conditions. Rmax® does not assume any responsibility or liability for the performance of any products other than those manufactured by Rmax®. **NOTE: Factory packaging should not be relied upon as protection at job sites or other outdoor storage locations. When short-term outdoor storage is necessary, take the following precautions: Store flat above ground on raised pallets, place bundles on finished surfaces, cover with a breathable tarpaulin and secure cover to prevent wind displacement.**