

## Product Application Sheet

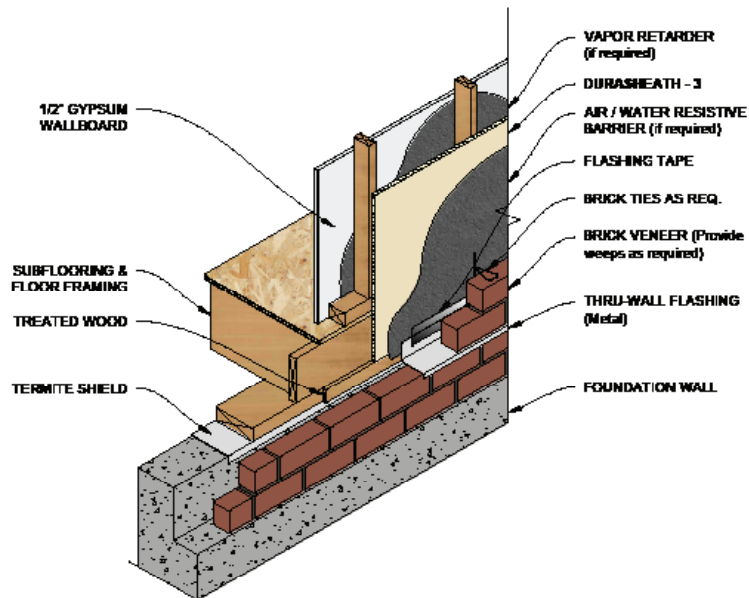
# DURASHEATH®

## STUD WALL APPLICATION

Durasheath® applied to the exterior or interior face of wood or metal studs, to cover all studs, sills, plates and header constructions, provides a layer of continuous insulation (ci) over details not normally covered by insulation products. It may be secured to the framing or structural sheathing with bugle-head screws, galvanized roofing nails or common nails driven through cap washers. Quality-grade construction adhesives may also be used to secure the Durasheath® on interior applications. Exterior facades may include brick/stone veneer, exterior siding and stucco.

Durasheath® must be separated from the interior with a minimum 1/2" gypsum wallboard or equivalent thermal barrier. When insulation extends into the attic or crawl space, Durasheath® has been tested to be left exposed in without the code prescribed ignition barrier, provided the space is limited to servicing utilities. The maximum thickness is 1" in walls and ceilings or up to 4.5" in walls only.

**Refer to Durasheath® Product Data Sheet for additional application/installation, compliances, thermal and physical properties, limitations and warnings.**



## Notes:

1. Stud walls must be properly braced for lateral loads according to the requirements of local Building Codes.

## WARRANTY

See Rmax® sales policy and limited warranties for terms and conditions. Rmax® does not assume any responsibility or liability for the performance of any products other than those manufactured by Rmax®. **NOTE: Factory packaging should not be relied upon as protection at job sites or other outdoor storage locations. When short-term outdoor storage is necessary, take the following precautions: Store flat above ground on raised pallets, place bundles on finished surfaces, cover with a breathable tarpaulin and secure cover to prevent wind displacement.**