



R-TRAC HVHZ SYSTEM

HIGH WIND WALL SOLUTION



HIGH VELOCITY HURRICANE ZONE (HVHZ) WALL

Introducing the “dry seal” R-Trac HVHZ system for use in High Velocity Hurricane Zones, meeting Florida Building Code Requirements...by Altech Panel Systems. Featuring Rmax ECOMAXci® FR Air Barrier and Alpolic composite material by Mitsubishi Plastics Composites America Inc.

A Pressure Equalized Rainscreen (PER) on the market to meet the new continuous insulation requirements with approval for all coastal regions.

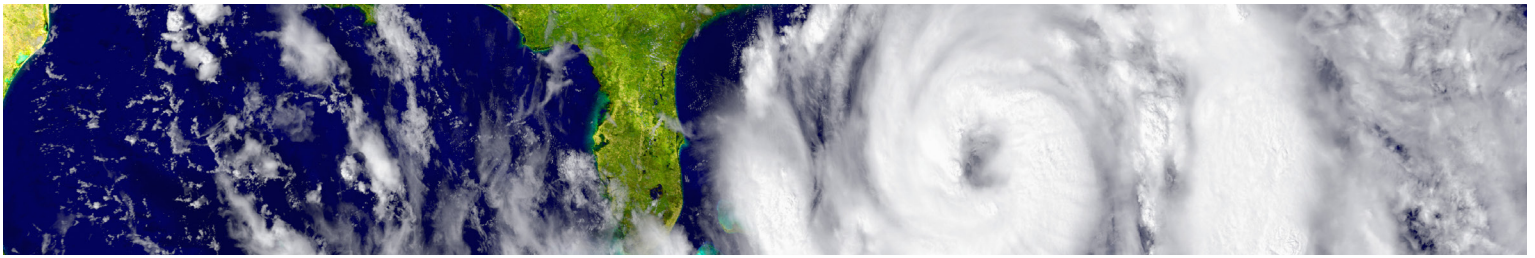
COMPLIANCES AND BENEFITS

- Florida Building Code Approval #FL16406
- Meets TAS 201, 202 and 203 up to 200 mph (ASTM E1886 and E1996)
- HVHZ Approval with a “Dry Seal” - No caulk in the joint to wear out
- Network of Altech Approved Installers
- AAMA 508 Approved and AAMA 509 Rated
- Meets NFPA 285 criteria
- Air Barrier Assembly
- Water-Resistive Barrier
- Provides continuous insulation for optimal energy-efficiency
- Savings through fewer materials and less labor than traditional ACM/MCM wall systems
- Engineered to maximize performance



BUILDING TRUST



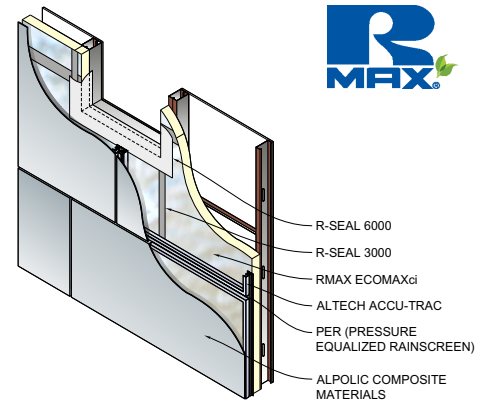


WORKING HARD UNDER PRESSURE

Rmax

Since 1978, Rmax has been an innovator in building insulation solutions. Rmax manufactures high-quality, polyiso-based insulation products that deliver maximum R-values, minimal environmental impact along with efficiency in installation, cost and design. As building science continues to reveal opportunities to improve, Rmax remains at the forefront – manufacturing tested, engineered insulation solutions for enhanced energy efficiency in the commercial, industrial and residential markets. Rmax manufactures the ECOMAXci® Wall Solution, a continuous insulation solution for commercial buildings to reduce thermal bridging, meet R-value requirements with a thinner profile and maximize control in efficient design.

www.rmax.com



Altech Panel Systems, Inc.

Altech Panel Systems, Inc. is the manufacturer of the patented Accu-Trac® aluminum composite wall panel systems for both exterior and interior applications. The composite wall panel system utilizes Alpolic Aluminum Composite Material (ACM) and Metal Composite Material (MCM), produced by world class manufacturer Mitsubishi Plastics Composites America Inc. Altech's devotion to detail and quality combined with personal attention to individual needs is what provides motivation to create the perfect metal cladding solution for projects. With the patented Accu-Trac® Systems, Altech offers exceptional affordability and value.

www.altechpanel.com



Mitsubishi Plastics Composites America Inc.

Mitsubishi Plastics Composites America Inc. is proud to be one of the world's leading manufacturers of Alpolic composite material (ACMs and MCMs). These light yet rigid panels have broadened architectural horizons, changed city skylines and inspired new aesthetic and functional achievement in building design around the globe since being introduced three decades ago. The commitment to innovation, quality and value have made ALPOLIC a truly global presence, with manufacturing and distribution capabilities worldwide and offers the widest selection of colors, textures and finishes – and the most extensive inventory of finished products – in the industry.

www.alpolic-usa.com



BUILDING TRUST



PRODUCT SELL SHEET
R-TRAC HVHZ SYSTEM
Revision.03-04-2020
www.rmax.com
(800) 527-0890