

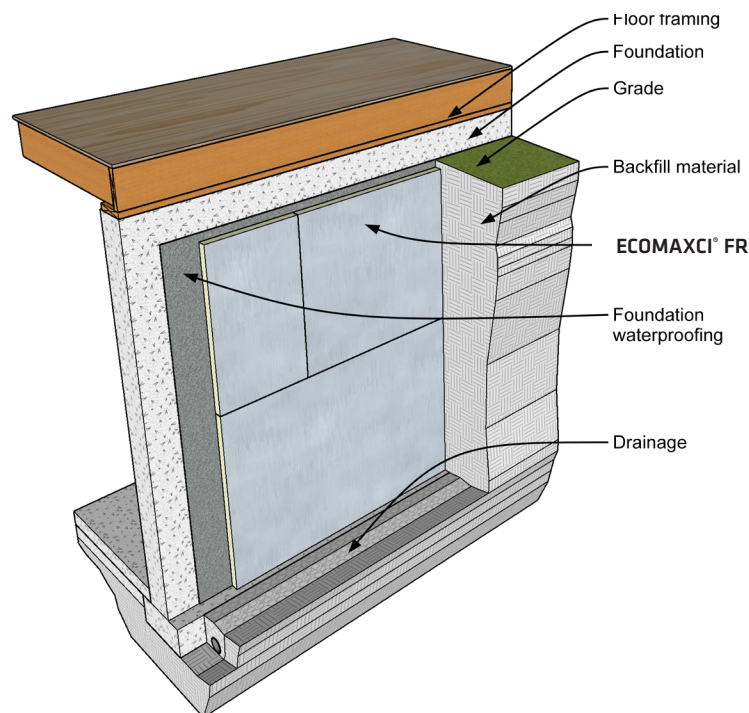
ECOMAXCI® FR (REPLACES TSX-8500)

BELOW-GRADE EXTERIOR WALLS APPLICATION

Rmax ECOMAXci® FR is an excellent choice to insulate the exterior side of below-grade walls. Install ECOMAXci® FR after damp proofing/waterproofing the concrete wall and prior to backfilling. Be sure to repair any leaks or cracks in the wall before installation. Rest the bottom edge of the board on top of the footer and extend up to sill plates. Secure the insulation using a quality grade construction adhesive compatible with both substrates. Board edges must be tightly butted together and fit snug around penetrations. For additional water shedding, seal all insulation joints with R-SEAL 3000 tape, or equivalent, as well as, all transitions and penetrations with R-SEAL 6000 flashing, or equivalent.

NOTE: To promote vertical drainage, install a composite drainage material either between the damp proofing/ waterproofing and insulation or over the insulation.

Refer to ECOMAXci® FR Product Data Sheet for additional application/installation, compliances, thermal and physical properties, limitations and warnings.



Notes:

1. Use of the insulation board in areas where the probability of termite infestation is "very heavy" must be in accordance with Chapter 26 of the IBC (2015 & 2018, Section 2603.8).

*Warranty: See Rmax "Sales Policy" and "Fifteen Year Limited Thermal Warranty" for terms and conditions. Rmax does not assume any responsibility or liability for the performance of any products other than those manufactured by Rmax. **NOTE: All Rmax products must be tarped, placed on skids and kept dry before and throughout construction.***



BUILDING TRUST



PRODUCT APPLICATION SHEET
ECOMAXCI® FR
Revision.03-05-2020
www.rmax.com
(800) 527-0890