

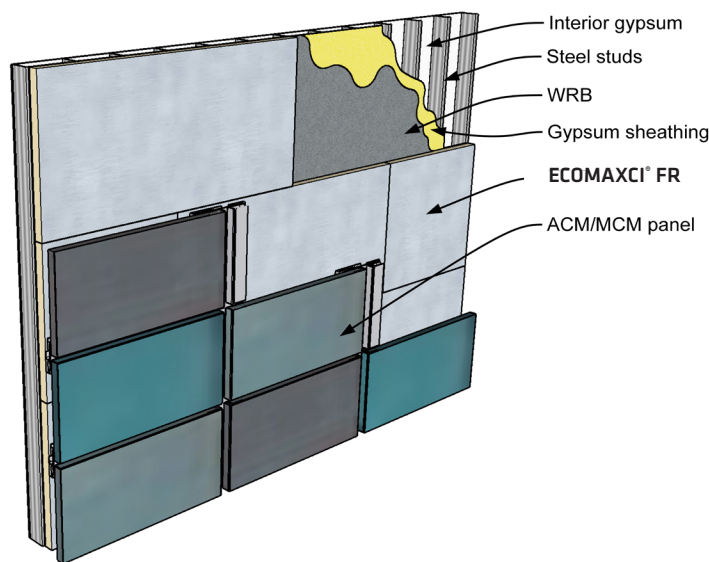
ECOMAXCI® FR (REPLACES TSX-8500)

EXTERIOR WALL APPLICATION (TYPE I-IV)

Rmax ECOMAXci® FR can be specified in exterior walls of buildings of any height utilizing brick veneer, stucco, limestone or natural stone veneer, cast artificial stone veneer, MCM, ACM, terracotta cladding, metal skin, cement board siding, stone/aluminum honeycomb composite panels, AAC panels or thin brick. Cladding attachment can be any standard installation technique, including open joint rainscreen systems.

ECOMAXci® FR has been tested per NFPA 285 and successfully passes with the exposed side facing the exterior. The NFPA 285 listing/approval is dependent on all components of the assembly. For a full explanation of approved assemblies and acceptable components, refer to Rmax ECOMAXci® FR NFPA 285 Assembly Guide. Third party evaluations and listings should also be consulted for specific instructions.

Refer to ECOMAXci® FR Product Data Sheet for additional application/installation, compliances, thermal and physical properties, limitations and warnings.



NOTE:

1. Exterior gypsum may be optional depending on assembly details.

*Warranty: See Rmax "Sales Policy" and "Fifteen Year Limited Thermal Warranty" for terms and conditions. Rmax does not assume any responsibility or liability for the performance of any products other than those manufactured by Rmax. **NOTE: All Rmax products must be tarped, placed on skids and kept dry before and throughout construction.***



BUILDING TRUST



PRODUCT APPLICATION SHEET
ECOMAXCI® FR
Revision.03-05-2020
www.rmax.com
(800) 527-0890