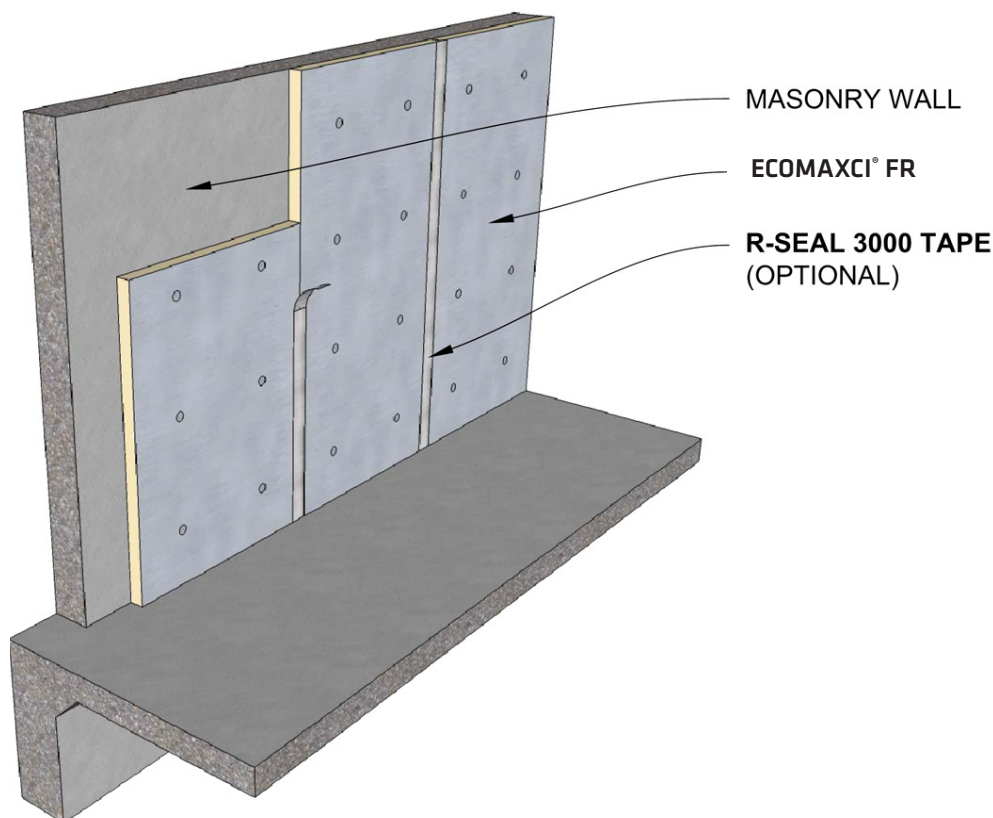


ECOMAXCI® FR (REPLACES TSX-8500)

MASONRY WALL APPLICATION

Rmax ECOMAXci® FR is applied to the interior face of concrete or concrete masonry to provide a layer of continuous insulation (ci) over the entire surface. It may be adhered or anchored directly to the concrete surface or attached to furring. Use Rmax PVC clips for an easy yet clean, professional installation. For example, ECOMAXci® FR is an excellent product for use in insulating block walls, standard cavity walls and the underside of slabs such as ceilings of parking structures. It can also be used in conjunction with tilt-up wall panels.

Refer to ECOMAXci® FR Product Data Sheet for additional application/installation, compliances, thermal and physical properties, limitations and warnings.



WARRANTY

See Rmax® sales policy and limited warranties for terms and conditions. Rmax® does not assume any responsibility or liability for the performance of any products other than those manufactured by Rmax®. **NOTE: Factory packaging should not be relied upon as protection at job sites or other outdoor storage locations. When short-term outdoor storage is necessary, take the following precautions: Store flat above ground on raised pallets, place bundles on finished surfaces, cover with a breathable tarpaulin and secure cover to prevent wind displacement.**