

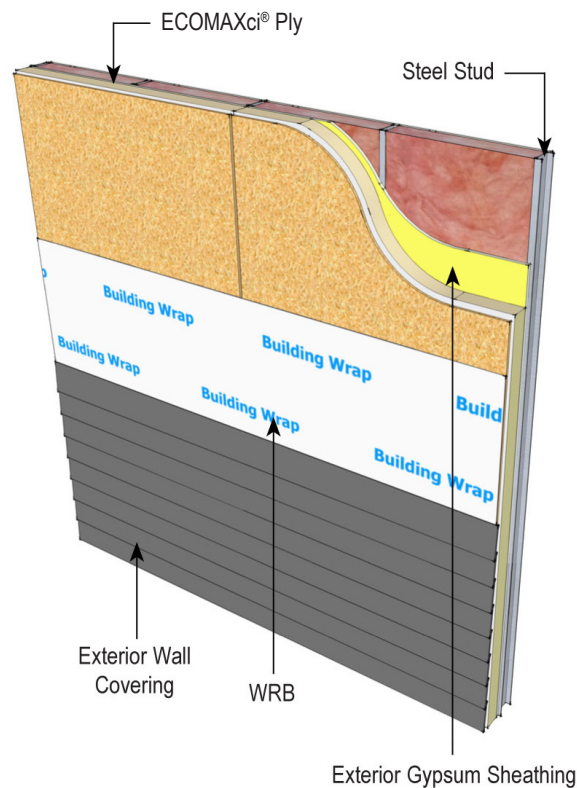
ECOMAXci® Ply: Continuous Insulation for Cladding Attachment

ECOMAXci® Ply is made with enhanced Class A polyiso replacing ECOBASEci™

Exterior Wall Application (Type I-IV)

ECOMAXci® Ply can be specified in exterior walls of buildings of any height utilizing brick veneer, stucco, limestone or natural stone veneer, cast artificial stone veneer, MCM, ACM, terracotta cladding, metal skin, cement board siding, stone/aluminum honeycomb composite panels, AAC panels or thin brick. ECOMAXci® Ply has been tested per NFPA 285 and successfully passes with the wood panel facing the exterior. The NFPA 285 listing/approval is dependent on all components of the assembly. Third party evaluations and listings should also be consulted for specific instructions.

Refer to ECOMAXci® Ply data sheet for additional application/installation, compliances, thermal and physical properties, limitations and warnings.



Warranty: See Rmax "Sales Policy" and applicable warranties for terms and conditions. Rmax does not assume any responsibility or liability for the performance of any products other than those manufactured by Rmax. NOTE: All Rmax products must be tarped, placed on skids and kept dry before and throughout construction.

Revision 11-01-2019