

### ECOMAXci® Wall Solution Details

Continuous Insulation As Water Resistive Barrier and Air Barrier Over Metal Studs

### R-SEAL 3000 and R-SEAL 6000 Neutral Cladding and Masonry Cladding Details

**EM-TF-01-N Series Drawings**  
**EM-TF-01-M Series Drawings**

Details utilize adhered joint and flashing tapes.

### R-SEAL 2000 LF Neutral Cladding and Masonry Cladding Details

**EM-LF-01-N Series Drawings**  
**EM-LF-01-M Series Drawings**

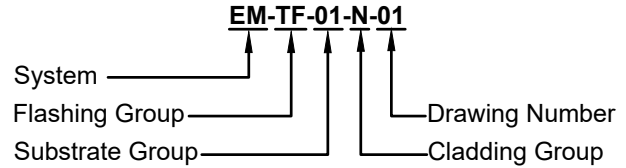
Details utilize liquid flashing.

### Universal Cladding Type Details - Including Stucco, Fiber Cement and Metal Panel Systems

**EM-U-01-ST Series Drawings**  
**EM-U-01-FC Series Drawings**  
**EM-U-01-MP Series Drawings**

Details utilize all options for cladding attachment points.

### DRAWING NUMBER NOMENCLATURE



#### **System**

**EM** = ECOMAXci® Wall Solution

#### **Flashing Group**

**TF** = Adhered Joint and Flashing Tape

**LF** = Liquid Flashing

**U** = Universal

#### **Substrate Group**

**01** = Direct to Metal Stud

**02** = Reserved for Future

#### **Cladding Group**

**G** = General Information - Drawing List, etc.

**N** = Neutral

**M** = Masonry (Brick, CMU, Stone, etc.)

**ST** = Stucco

**FC** = Fiber Cement

**MP** = Metal Panels

#### Detail Color Scheme for Rmax Products

**Red** = Adhered Joint and Flashing Tape

**Green** = Liquid Flashing

These details are intended to supplement the *ECOMAXci® Wall Solution Installation Instructions* located at [www.Rmax.com](http://www.Rmax.com); which should be consulted for additional guidance and installation requirements. Where discrepancies occur, the installation instructions supersede these details. at [www.Rmax.com](http://www.Rmax.com)



**Rmax**

13524 Welch Road  
Dallas, TX 75244  
Phone: (972)-850-3604  
Email: [Technical@Rmax.com](mailto:Technical@Rmax.com)

DRAWING NAME:

ECOMAXci® Wall Solution  
List of Cladding Detail Groups  
ECOMAXci® WALL SOLUTION AS WRB & AB

SCALE:

NA

REV. DATE:

04-17-2020

FILE NO.:

G-01-0G-00

DRW. NO.:

EM-G-01-G-00

As a manufacturer of construction materials, Rmax provides general details as a general guide for informational purposes only. These details are not intended to replace sound engineering and architectural practices and should not be relied upon for that purpose. Rmax assumes no liability with respect to the design of the system. The architect, consultant and/or engineer or design professional for a particular project bears the sole responsibility for the design of the system, for the preparation and approval of the project specifications, details and shop drawings, and for determining their suitability for a particular project or application. **Rmax makes no warranty of any kind, either expressed or implied, as to the content of this guide detail. Rmax shall not be responsible under any legal theory to any third party for any direct or consequential damages of any kind arising from the use of this guide detail.** All products and services provided by Rmax are subject to its terms and conditions of sale available at [www.Rmax.com](http://www.Rmax.com).

### ECOMAXci® Wall Solution Details

Continuous Insulation As Water Resistive Barrier and Air Barrier Over Metal Studs

### R-SEAL 3000 AND R-SEAL 6000 Neutral Cladding and Masonry Cladding Details

Details utilize adhered joint and flashing tapes.

Details in the various groups on this page may illustrate a combination of liquid flashing and adhered flashing tapes where appropriate.

### NEUTRAL CLADDING DETAILS - TF Drawing No.

Wall at Roof Parapet - Extended Stud Insulated Parapet	EM-TF-01-N-11
Wall at Floor Line - Fire Stopping and Deflection Joint Details	EM-TF-01-N-12
Wall at Foundation and Floor Slab	EM-TF-01-N-13
Rough Window Opening	EM-TF-01-N-21
Plan View Wall Details - Stationary Joints	EM-TF-01-N-31
Plan View Wall Details - Wall Expansion Joints	EM-TF-01-N-32
Plan View Wall Details - Transitions and Control Joints - Aligned Faces	EM-TF-01-N-33
Plan View Wall Details - Transitions and Control Joints - Non-Aligned Faces	EM-TF-01-N-34
Plan View Wall Details - Transitions, Inside and Outside Corners	EM-TF-01-N-41
Wall Penetration Details - Using Tape Flashing	EM-TF-01-N-51
Wall Penetration Details - Using Sealant	EM-TF-01-N-52

### MASONRY CLADDING DETAILS - TF Drawing No.

Wall at Roof Parapet - Extended Stud Insulated Parapet	EM-TF-01-M-11
Wall at Floor Line - At Shelf Angle With Deflection Joint	EM-TF-01-M-12
Wall at Foundation and Floor Slab With Brick Sill	EM-TF-01-M-13

These details are intended to supplement the *ECOMAXci® Wall Solution Installation Instructions* located at [www.Rmax.com](http://www.Rmax.com); which should be consulted for additional guidance and installation requirements. Where discrepancies occur, the installation instructions supersede these details. at [www.Rmax.com](http://www.Rmax.com)



**Rmax**

13524 Welch Road  
Dallas, TX 75244  
Phone: (972)-850-3604  
Email: [Technical@Rmax.com](mailto:Technical@Rmax.com)

DRAWING NAME:

ECOMAXci® Wall Solution - Adhered Joint and Flashing Tape  
List of Details - Neutral Cladding and Masonry Cladding  
ECOMAXci® WALL SOLUTION AS WRB & AB

SCALE:

NA

REV. DATE:

04-17-2020

FILE NO.:

TF-01-0G-01

DRW. NO.:

EM-TF-01-G-01

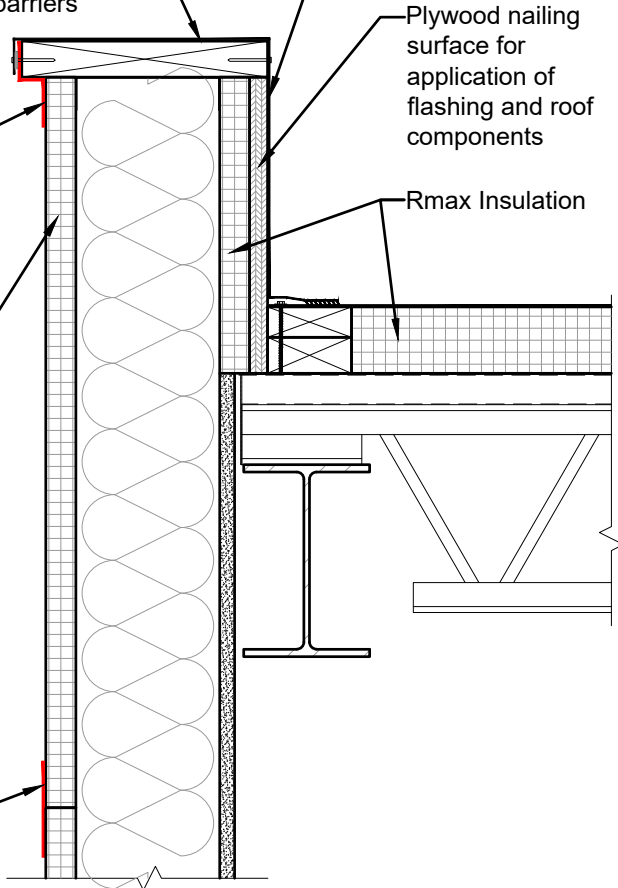
As a manufacturer of construction materials, Rmax provides general details as a general guide for informational purposes only. These details are not intended to replace sound engineering and architectural practices and should not be relied upon for that purpose. Rmax assumes no liability with respect to the design of the system. The architect, consultant and/or engineer or design professional for a particular project bears the sole responsibility for the design of the system, for the preparation and approval of the project specifications, details and shop drawings, and for determining their suitability for a particular project or application. **Rmax makes no warranty of any kind, either expressed or implied, as to the content of this guide detail. Rmax shall not be responsible under any legal theory to any third party for any direct or consequential damages of any kind arising from the use of this guide detail.** All products and services provided by Rmax are subject to its terms and conditions of sale available at [www.Rmax.com](http://www.Rmax.com).

Provide air barrier membranes to connect and seal the air barrier of wall and the roof/parapet air barriers

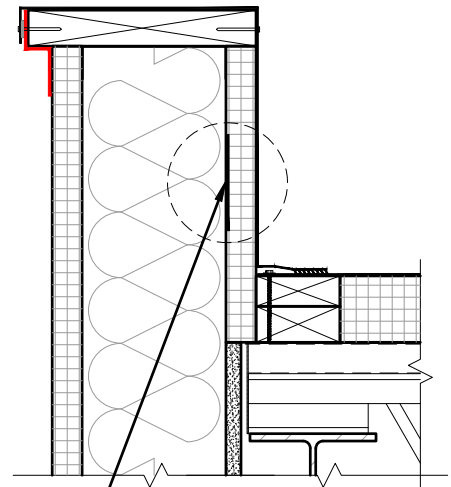
Rmax R-SEAL 6000

ECOMAXci® FR Air Barrier

Rmax R-SEAL 3000



Note: Parapet cap not shown in details.



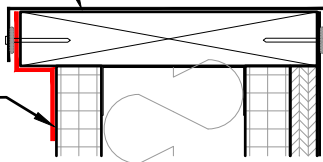
Sheet metal strip attached to studs for mechanical attachment of flashing, and roof components

**ALTERNATIVE MEANS TO PROVIDE FOR ATTACHMENT TO BACK SIDE OF PARAPET**

Note: In all cases below, extend R-SEAL 6000 onto face of blocking to allow for connection with roof/parapet air barriers.

Extend cap over materials at each face - Bond to adjacent materials or apply compatible sealant - Mechanically attach as required

Rmax R-SEAL 6000

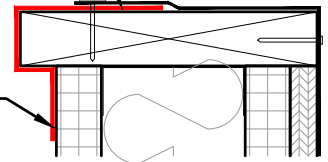


**TWO STAGE PARAPET AIR BARRIER CLOSURE - ROOFER OR THIRD PARTY FINALIZED**

Note: Parapet cap not shown in details.

Extend roof flashing over wall flashing material - Bond to wall flashing or apply compatible sealant - Mechanically attach as required

Rmax R-SEAL 6000



**PARAPET AIR BARRIER CLOSURE ONE STAGE ROOF CAP AND FLASHING - ROOFER FINALIZED**

These details are intended to supplement the *ECOMAXci® Wall Solution Installation Instructions* located at [www.Rmax.com](http://www.Rmax.com); which should be consulted for additional guidance and installation requirements. Where discrepancies occur, the installation instructions supersede these details. at [www.Rmax.com](http://www.Rmax.com)



**Rmax**

13524 Welch Road  
Dallas, TX 75244  
Phone: (972)-850-3604  
Email: [Technical@Rmax.com](mailto:Technical@Rmax.com)

DRAWING NAME:

NEUTRAL CLADDING - Adhered Joint and Flashing Tape  
Wall at Roof Parapet - Extended Stud - Insulated Parapet  
ECOMAXci® WALL SOLUTION AS WRB & AB

SCALE:  
NOT TO SCALE

REV. DATE:  
04-17-2020

FILE NO.:  
TF-01-1N-11

DRW. NO.:  
EM-TF-01-N-11

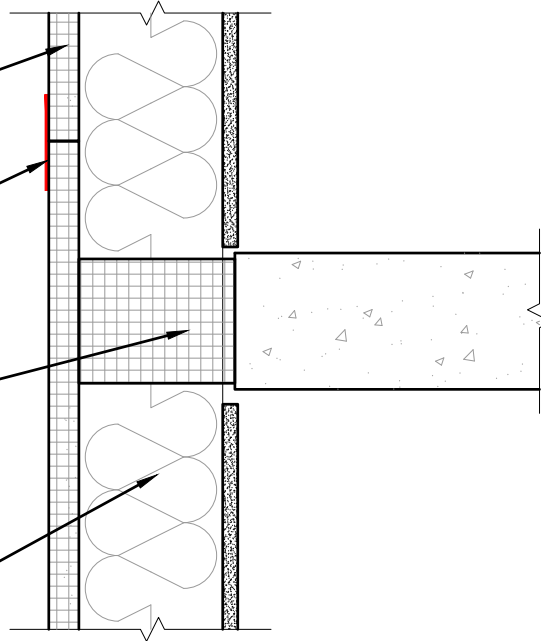
As a manufacturer of construction materials, Rmax provides general details as a general guide for informational purposes only. These details are not intended to replace sound engineering and architectural practices and should not be relied upon for that purpose. Rmax assumes no liability with respect to the design of the system. The architect, consultant and/or engineer or design professional for a particular project bears the sole responsibility for the design of the system, for the preparation and approval of the project specifications, details and shop drawings, and for determining their suitability for a particular project or application. Rmax makes no warranty of any kind, either expressed or implied, as to the content of this guide detail. Rmax shall not be responsible under any legal theory to any third party for any direct or consequential damages of any kind arising from the use of this guide detail. All products and services provided by Rmax are subject to its terms and conditions of sale available at [www.Rmax.com](http://www.Rmax.com).

ECOMAXci® FR Air Barrier

Rmax R-SEAL 3000

Fire Stop Assembly

Metal studs extend continuously in front of structural floor slab



### FLOOR LINE FIRE STOPPING DETAIL

ECOMAXci® FR Air Barrier

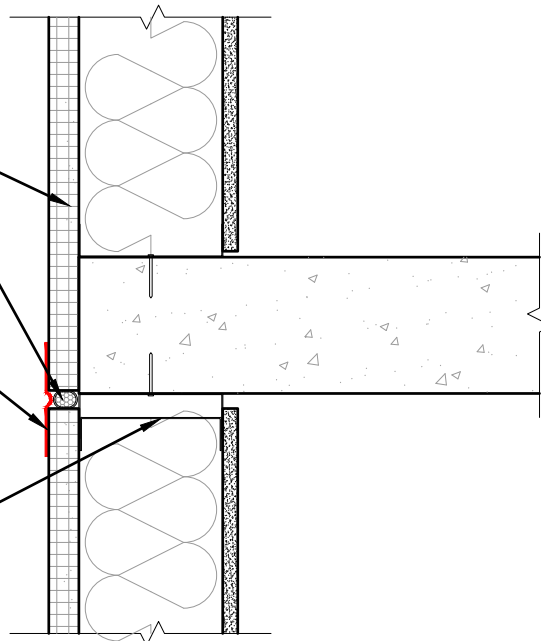
Foam backer rod

Rmax R-SEAL 6000

Note - Loop material into joint, to allow for movement

Deflection track at metal studs.

Note - Do not attach top of board to either component of deflection track; attach only to vertical studs.



### FLOOR LINE DEFLECTION JOINT DETAIL

These details are intended to supplement the *ECOMAXci® Wall Solution Installation Instructions* located at [www.Rmax.com](http://www.Rmax.com); which should be consulted for additional guidance and installation requirements. Where discrepancies occur, the installation instructions supersede these details. at [www.Rmax.com](http://www.Rmax.com)



# Rmax

13524 Welch Road  
Dallas, TX 75244  
Phone: (972)-850-3604  
Email: [Technical@Rmax.com](mailto:Technical@Rmax.com)

DRAWING NAME:

NEUTRAL CLADDING - Adhered Joint and Flashing Tape  
Wall at Floor Line - Fire Stopping and Deflection Joint Details  
ECOMAXci® WALL SOLUTION AS WRB & AB

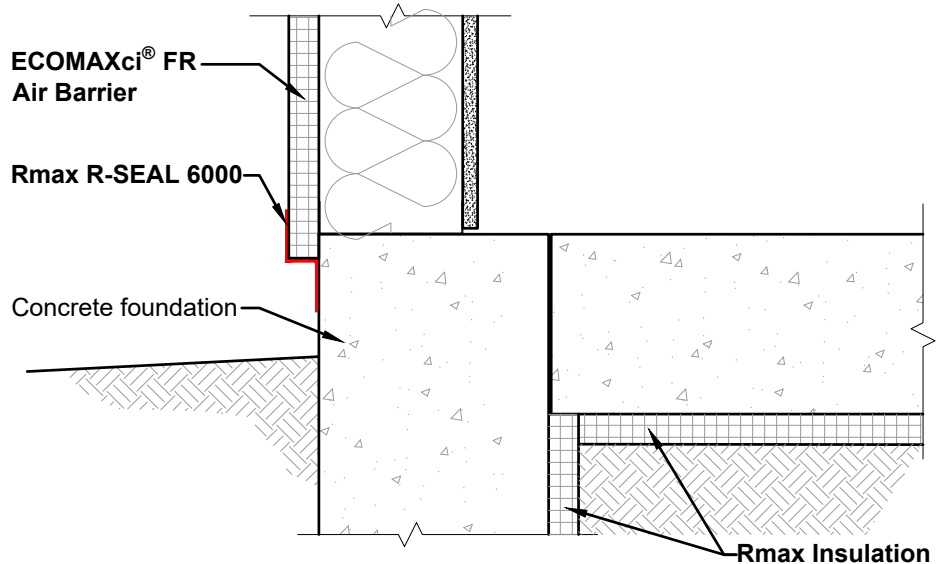
SCALE:  
NOT TO SCALE

REV. DATE:  
04-17-2020

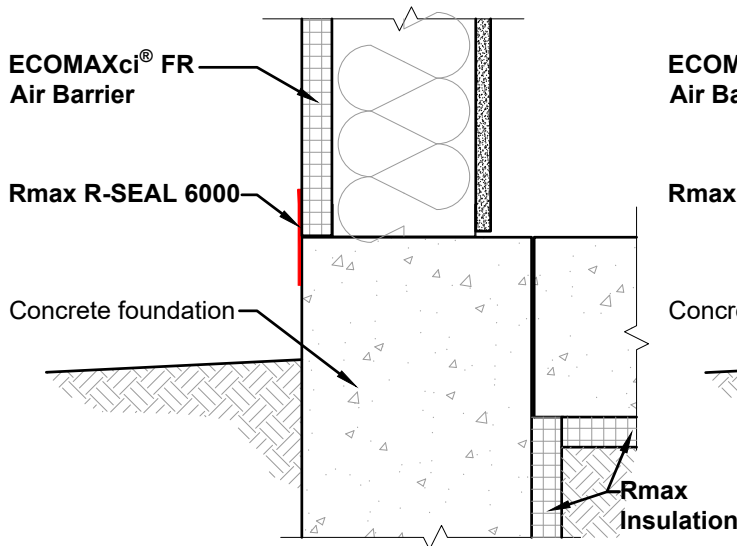
FILE NO.:  
TF-01-1N-12

DRW. NO.:  
EM-TF-01-N-12

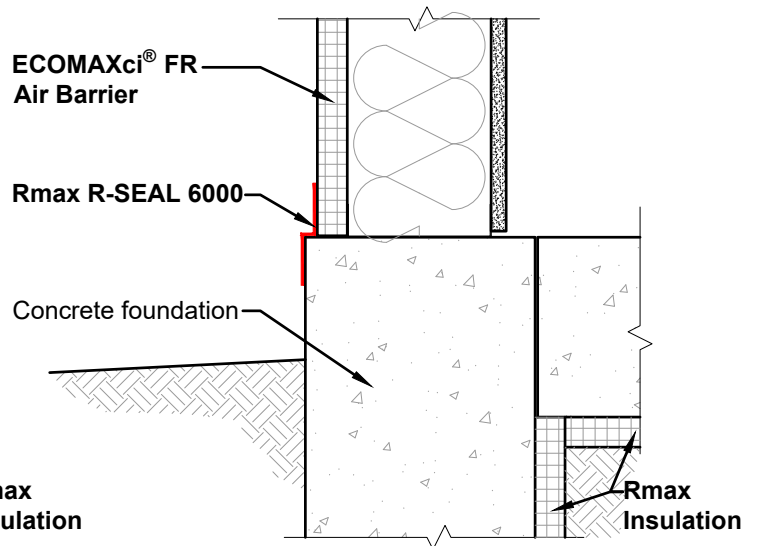
As a manufacturer of construction materials, Rmax provides general details as a general guide for informational purposes only. These details are not intended to replace sound engineering and architectural practices and should not be relied upon for that purpose. Rmax assumes no liability with respect to the design of the system. The architect, consultant and/or engineer or design professional for a particular project bears the sole responsibility for the design of the system, for the preparation and approval of the project specifications, details and shop drawings, and for determining their suitability for a particular project or application. **Rmax makes no warranty of any kind, either expressed or implied, as to the content of this guide detail. Rmax shall not be responsible under any legal theory to any third party for any direct or consequential damages of any kind arising from the use of this guide detail.** All products and services provided by Rmax are subject to its terms and conditions of sale available at [www.Rmax.com](http://www.Rmax.com).



**TYPICAL INSTALLATION  
EXTENDED BELOW FLOOR LINE**



**FOUNDATION FLUSH WITH  
ECOMAXci® FR Air Barrier**



**FOUNDATION EXTENDED BEYOND  
ECOMAXci® FR Air Barrier**

These details are intended to supplement the *ECOMAXci® Wall Solution Installation Instructions* located at [www.Rmax.com](http://www.Rmax.com); which should be consulted for additional guidance and installation requirements. Where discrepancies occur, the installation instructions supersede these details. at [www.Rmax.com](http://www.Rmax.com)



**Rmax**  
13524 Welch Road  
Dallas, TX 75244  
Phone: (972)-850-3604  
Email: [Technical@Rmax.com](mailto:Technical@Rmax.com)

DRAWING NAME:

NEUTRAL CLADDING - Adhered Joint and Flashing Tape  
Wall at Foundation and Floor Slab  
ECOMAXci® WALL SOLUTION AS WRB & AB

SCALE:  
NOT TO SCALE

REV. DATE:  
04-17-2020

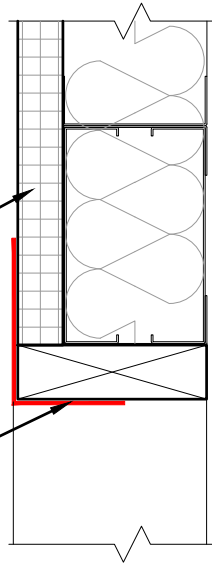
FILE NO.:  
TF-01-1N-13

DRW. NO.:  
EM-TF-01-N-13

As a manufacturer of construction materials, Rmax provides general details as a general guide for informational purposes only. These details are not intended to replace sound engineering and architectural practices and should not be relied upon for that purpose. Rmax assumes no liability with respect to the design of the system. The architect, consultant and/or engineer or design professional for a particular project bears the sole responsibility for the design of the system, for the preparation and approval of the project specifications, details and shop drawings, and for determining their suitability for a particular project or application. Rmax makes no warranty of any kind, either expressed or implied, as to the content of this guide detail. Rmax shall not be responsible under any legal theory to any third party for any direct or consequential damages of any kind arising from the use of this guide detail. All products and services provided by Rmax are subject to its terms and conditions of sale available at [www.Rmax.com](http://www.Rmax.com).

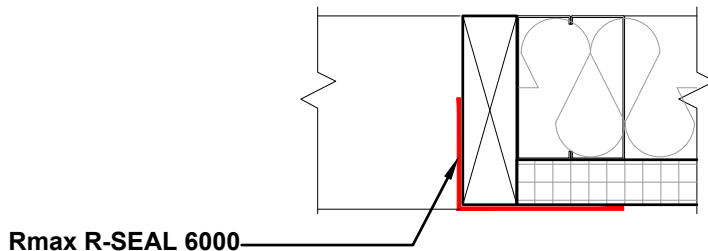
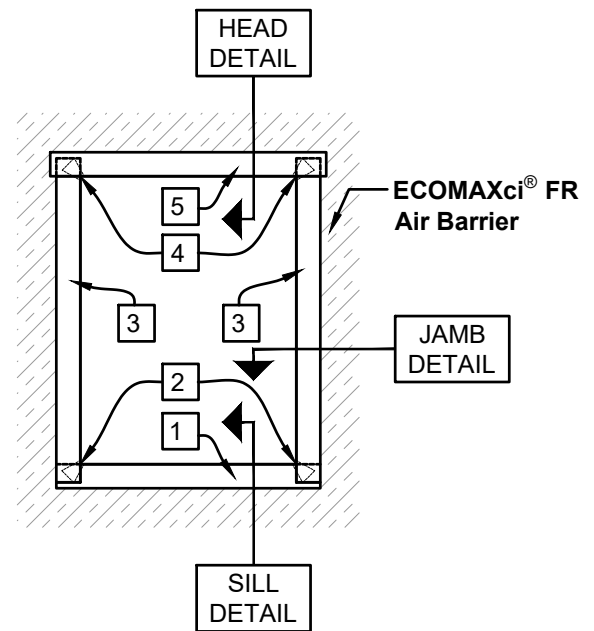
ECOMAXci® FR Air Barrier

Rmax R-SEAL 6000



**WINDOW OPENING HEAD**

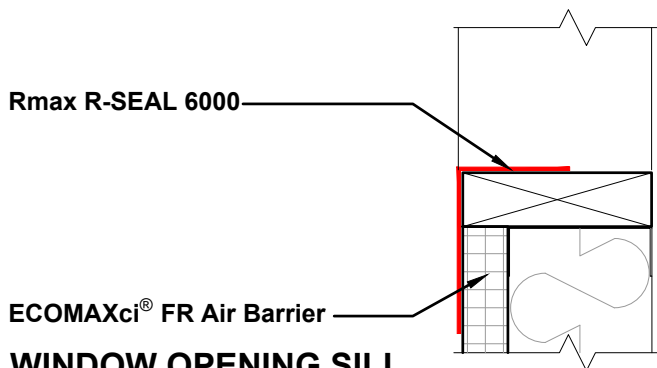
- SECTION



Rmax R-SEAL 6000

**WINDOW OPENING JAMB**

- SECTION



Rmax R-SEAL 6000

ECOMAXci® FR Air Barrier

**WINDOW OPENING SILL**

- SECTION

# Numbered items on opening elevation indicate the following rough opening flashing items and sequence of installation:

- 1 Sill flashing
- 2 Bottom corner patches
- 3 Jamb flashing
- 4 Head corner patches
- 5 Head flashing

**WINDOW OPENING**

- ELEVATION

These details are intended to supplement the *ECOMAXci® Wall Solution Installation Instructions* located at [www.Rmax.com](http://www.Rmax.com); which should be consulted for additional guidance and installation requirements. Where discrepancies occur, the installation instructions supersede these details. at [www.Rmax.com](http://www.Rmax.com)



**Rmax**

13524 Welch Road  
Dallas, TX 75244  
Phone: (972)-850-3604  
Email: [Technical@Rmax.com](mailto:Technical@Rmax.com)

DRAWING NAME:

NEUTRAL CLADDING - Adhered Joint and Flashing Tape  
Rough Window Opening

ECOMAXci® WALL SOLUTION AS WRB & AB

SCALE:  
NOT TO SCALE

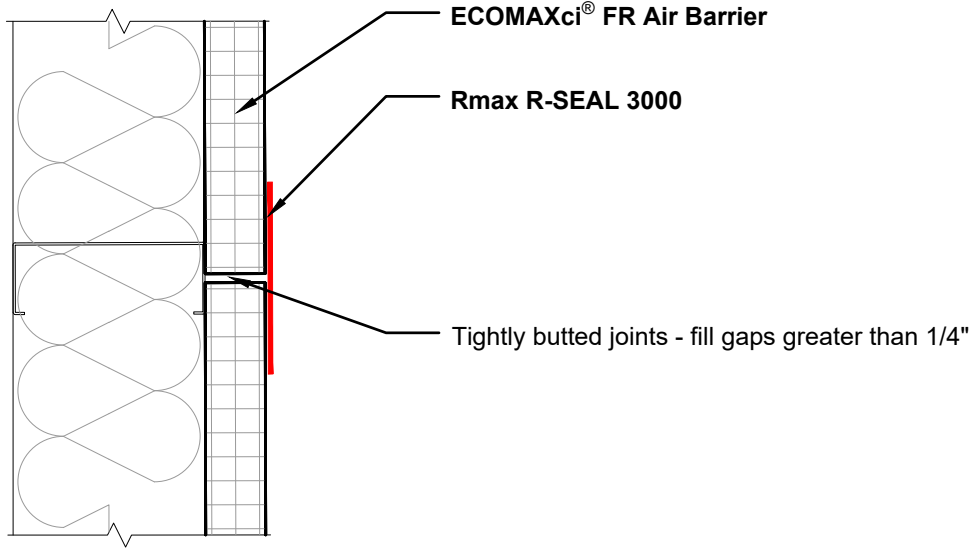
REV. DATE:  
04-17-2020

FILE NO.:  
TF-01-1N-21

DRW. NO.:  
EM-TF-01-N-21

As a manufacturer of construction materials, Rmax provides general details as a general guide for informational purposes only. These details are not intended to replace sound engineering and architectural practices and should not be relied upon for that purpose. Rmax assumes no liability with respect to the design of the system. The architect, consultant and/or engineer or design professional for a particular project bears the sole responsibility for the design of the system, for the preparation and approval of the project specifications, details and shop drawings, and for determining their suitability for a particular project or application. Rmax makes no warranty of any kind, either expressed or implied, as to the content of this guide detail. Rmax shall not be responsible under any legal theory to any third party for any direct or consequential damages of any kind arising from the use of this guide detail. All products and services provided by Rmax are subject to its terms and conditions of sale available at [www.Rmax.com](http://www.Rmax.com).

Note: Detail applies at horizontal joints (not backed by metal stud) as well as at vertical joints which must fall on the metal stud.



**STATIONARY JOINT IN ECOMAXci FR Air Barrier**

These details are intended to supplement the *ECOMAXci Wall Solution Installation Instructions* located at [www.Rmax.com](http://www.Rmax.com); which should be consulted for additional guidance and installation requirements. Where discrepancies occur, the installation instructions supersede these details. at [www.Rmax.com](http://www.Rmax.com)



**Rmax**

13524 Welch Road  
Dallas, TX 75244  
Phone: (972)-850-3604  
Email: [Technical@Rmax.com](mailto:Technical@Rmax.com)

DRAWING NAME:

NEUTRAL CLADDING - Adhered Joint and Flashing Tape  
Plan View Wall Details - Stationary Joints  
ECOMAXci WALL SOLUTION AS WRB & AB

SCALE:

NOT TO SCALE

REV. DATE:

04-17-2020

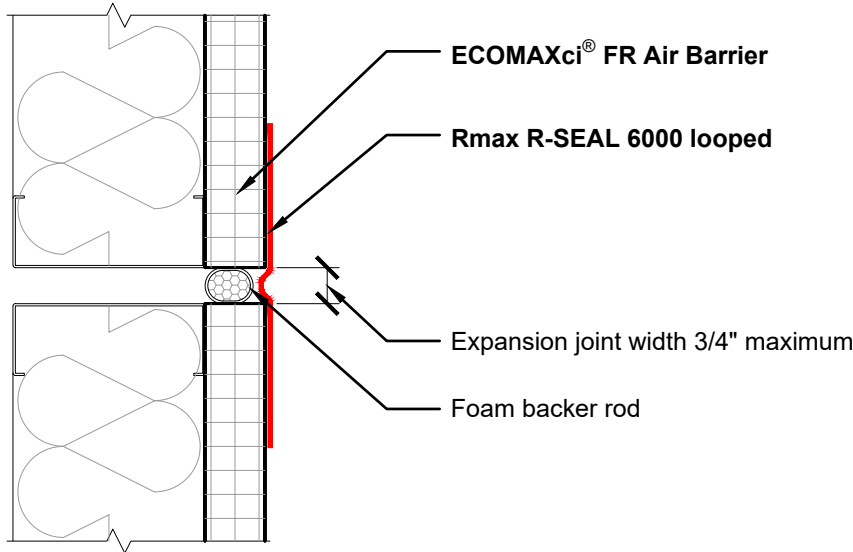
FILE NO.:

TF-01-1N-31

DRW. NO.:

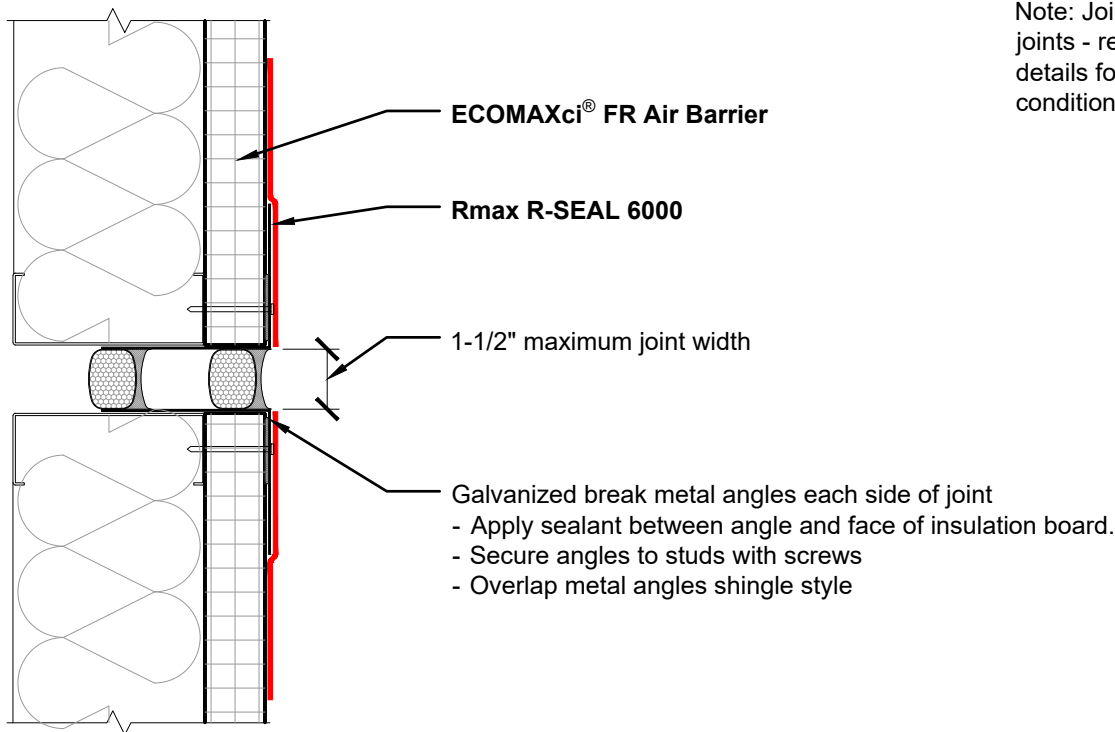
EM-TF-01-N-31

As a manufacturer of construction materials, Rmax provides general details as a general guide for informational purposes only. These details are not intended to replace sound engineering and architectural practices and should not be relied upon for that purpose. Rmax assumes no liability with respect to the design of the system. The architect, consultant and/or engineer or design professional for a particular project bears the sole responsibility for the design of the system, for the preparation and approval of the project specifications, details and shop drawings, and for determining their suitability for a particular project or application. **Rmax makes no warranty of any kind, either expressed or implied, as to the content of this guide detail. Rmax shall not be responsible under any legal theory to any third party for any direct or consequential damages of any kind arising from the use of this guide detail.** All products and services provided by Rmax are subject to its terms and conditions of sale available at [www.Rmax.com](http://www.Rmax.com).



Note: Joint shown are vertical joints - refer to deflection joint details for horizontal joint conditions

**EXPANSION JOINT (3/4" max)**



Note: Joint shown are vertical joints - refer to deflection joint details for horizontal joint conditions

**EXPANSION JOINT (3/4" TO 1-1/2" wide)**

These details are intended to supplement the *ECOMAXci® Wall Solution Installation Instructions* located at [www.Rmax.com](http://www.Rmax.com); which should be consulted for additional guidance and installation requirements. Where discrepancies occur, the installation instructions supersede these details. at [www.Rmax.com](http://www.Rmax.com)



**Rmax**  
 13524 Welch Road  
 Dallas, TX 75244  
 Phone: (972)-850-3604  
 Email: [Technical@Rmax.com](mailto:Technical@Rmax.com)

DRAWING NAME: NEUTRAL CLADDING - Adhered Joint and Flashing Tape  
 Plan View Wall Details - Wall Expansion Joints  
 ECOMAXci® WALL SOLUTION AS WRB & AB

SCALE: NOT TO SCALE	REV. DATE: 04-17-2020	FILE NO.: TF-01-1N-32	DRW. NO.: EM-TF-01-N-32
------------------------	--------------------------	--------------------------	----------------------------

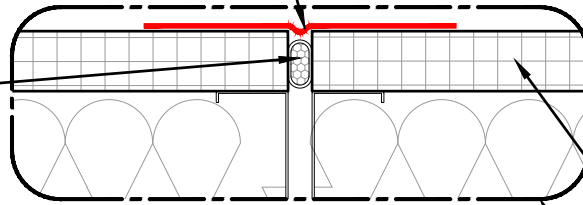
As a manufacturer of construction materials, Rmax provides general details as a general guide for informational purposes only. These details are not intended to replace sound engineering and architectural practices and should not be relied upon for that purpose. Rmax assumes no liability with respect to the design of the system. The architect, consultant and/or engineer or design professional for a particular project bears the sole responsibility for the design of the system, for the preparation and approval of the project specifications, details and shop drawings, and for determining their suitability for a particular project or application. **Rmax makes no warranty of any kind, either expressed or implied, as to the content of this guide detail. Rmax shall not be responsible under any legal theory to any third party for any direct or consequential damages of any kind arising from the use of this guide detail. All products and services provided by Rmax are subject to its terms and conditions of sale available at [www.Rmax.com](http://www.Rmax.com).**



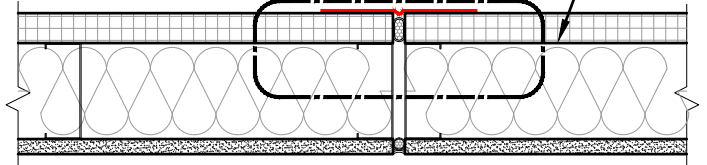
**Rmax R-SEAL 6000**

Form loop in tape if joint is subject to movement.

Insulating foam or foam backer rod



**ECOMAXci® FR Air Barrier**

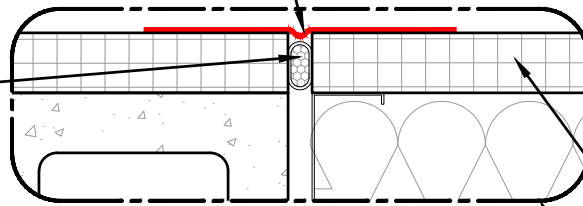


**CONTROL JOINT**

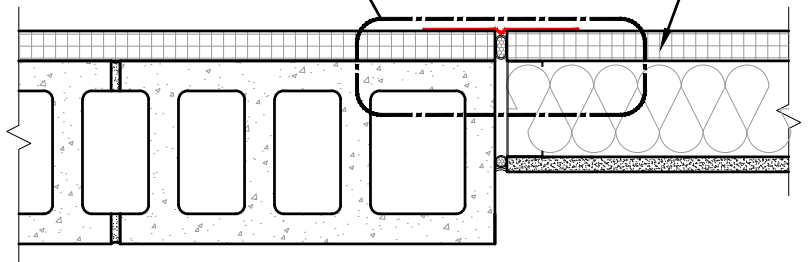
**Rmax R-SEAL 6000**

Form loop in tape if joint is subject to movement.

Insulating foam or foam backer rod



**ECOMAXci® FR Air Barrier**



**CMU AT CONTROL JOINT**

These details are intended to supplement the *ECOMAXci® Wall Solution Installation Instructions* located at [www.Rmax.com](http://www.Rmax.com); which should be consulted for additional guidance and installation requirements. Where discrepancies occur, the installation instructions supersede these details. at [www.Rmax.com](http://www.Rmax.com)



**Rmax**

13524 Welch Road  
Dallas, TX 75244  
Phone: (972)-850-3604  
Email: [Technical@Rmax.com](mailto:Technical@Rmax.com)

DRAWING NAME:

NEUTRAL CLADDING - Adhered Joint and Flashing Tape  
Plan View Wall Details - Transitions and Control Joints - Aligned Faces

**ECOMAXci® WALL SOLUTION AS WRB & AB**

SCALE:

NOT TO SCALE

REV. DATE:

04-17-2020

FILE NO.:

TF-01-1N-33

DRW. NO.:

EM-TF-01-N-33

As a manufacturer of construction materials, Rmax provides general details as a general guide for informational purposes only. These details are not intended to replace sound engineering and architectural practices and should not be relied upon for that purpose. Rmax assumes no liability with respect to the design of the system. The architect, consultant and/or engineer or design professional for a particular project bears the sole responsibility for the design of the system, for the preparation and approval of the project specifications, details and shop drawings, and for determining their suitability for a particular project or application. **Rmax makes no warranty of any kind, either expressed or implied, as to the content of this guide detail. Rmax shall not be responsible under any legal theory to any third party for any direct or consequential damages of any kind arising from the use of this guide detail.** All products and services provided by Rmax are subject to its terms and conditions of sale available at [www.Rmax.com](http://www.Rmax.com).

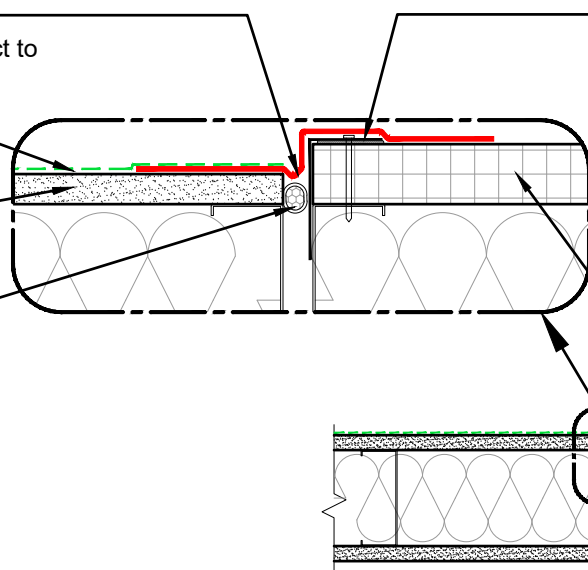
**Rmax R-SEAL 6000**

Form loop in tape if joint is subject to movement.

Applied WRB - AB

Sheathing

Insulating foam or foam backer rod



- Galvanized break metal angles each side of joint
- Apply sealant between angle and face of insulation board
- Secure angles to studs with screws
- Overlap metal angles shingle style

**ECOMAXci® FR Air Barrier**

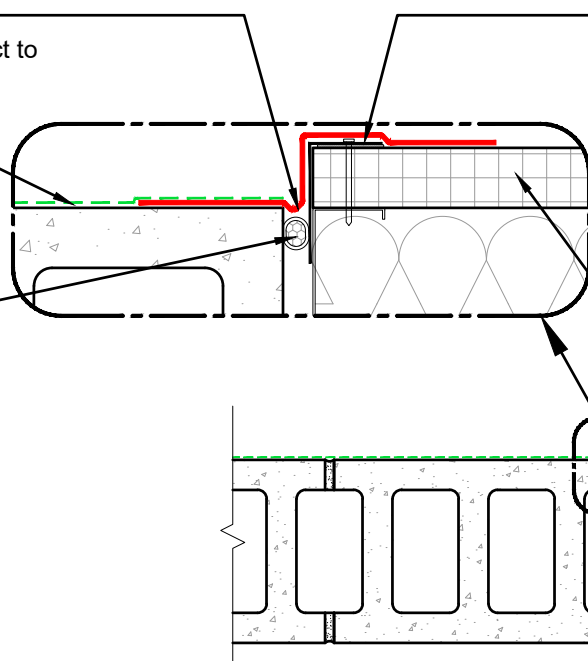
**SHEATHING AT CONTROL JOINT / CHANGE IN PLANE**

**Rmax R-SEAL 6000**

Form loop in tape if joint is subject to movement.

Applied WRB - AB

Insulating foam or foam backer rod



- Galvanized break metal angles each side of joint
- Apply sealant between angle and face of insulation board
- Secure angles to studs with screws
- Overlap metal angles shingle style

**ECOMAXci® FR Air Barrier**

**CMU AT CONTROL JOINT / CHANGE IN PLANE**

These details are intended to supplement the *ECOMAXci® Wall Solution Installation Instructions* located at [www.Rmax.com](http://www.Rmax.com); which should be consulted for additional guidance and installation requirements. Where discrepancies occur, the installation instructions supersede these details. at [www.Rmax.com](http://www.Rmax.com)



**Rmax**

13524 Welch Road  
Dallas, TX 75244  
Phone: (972)-850-3604  
Email: [Technical@Rmax.com](mailto:Technical@Rmax.com)

DRAWING NAME:

NEUTRAL CLADDING - Adhered Joint and Flashing Tape  
Plan View Wall Details - Transitions and Control Joints - Non-Aligned Faces  
ECOMAXci® WALL SOLUTION AS WRB & AB

SCALE:

NOT TO SCALE

REV. DATE:

04-17-2020

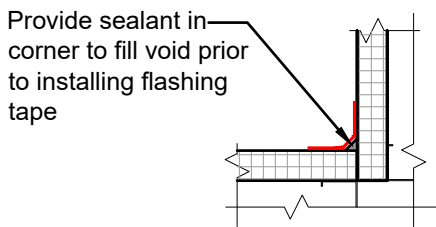
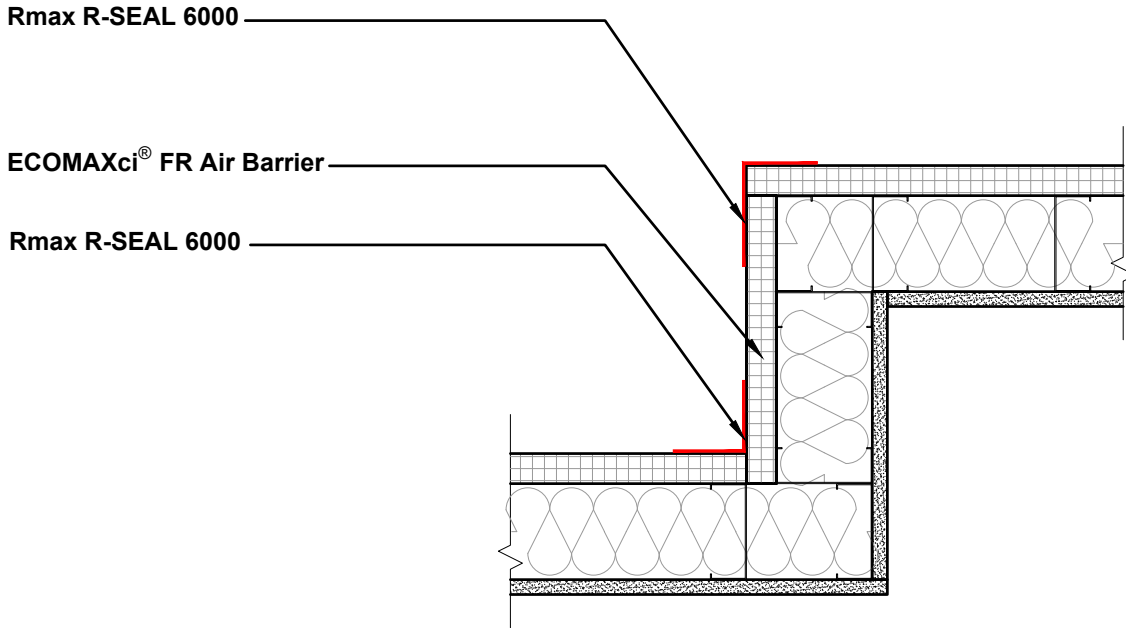
FILE NO.:

TF-01-1N-34

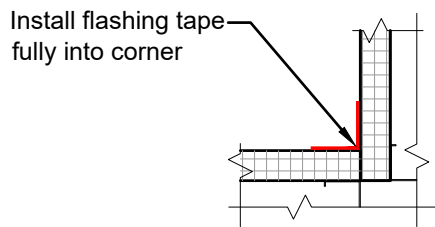
DRW. NO.:

EM-TF-01-N-34

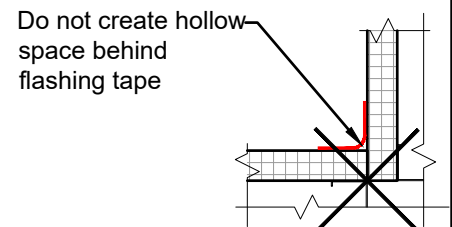
As a manufacturer of construction materials, Rmax provides general details as a general guide for informational purposes only. These details are not intended to replace sound engineering and architectural practices and should not be relied upon for that purpose. Rmax assumes no liability with respect to the design of the system. The architect, consultant and/or engineer or design professional for a particular project bears the sole responsibility for the design of the system, for the preparation and approval of the project specifications, details and shop drawings, and for determining their suitability for a particular project or application. Rmax makes no warranty of any kind, either expressed or implied, as to the content of this guide detail. Rmax shall not be responsible under any legal theory to any third party for any direct or consequential damages of any kind arising from the use of this guide detail. All products and services provided by Rmax are subject to its terms and conditions of sale available at [www.Rmax.com](http://www.Rmax.com).



**BEST PRACTICE  
CORNER FLASHING**



**COMMON PRACTICE  
CORNER FLASHING**



**IMPROPER PRACTICE  
CORNER FLASHING**

These details are intended to supplement the *ECOMAXci® Wall Solution Installation Instructions* located at [www.Rmax.com](http://www.Rmax.com); which should be consulted for additional guidance and installation requirements. Where discrepancies occur, the installation instructions supersede these details. at [www.Rmax.com](http://www.Rmax.com)



**Rmax**

13524 Welch Road  
Dallas, TX 75244  
Phone: (972)-850-3604  
Email: [Technical@Rmax.com](mailto:Technical@Rmax.com)

DRAWING NAME:

NEUTRAL CLADDING - Adhered Joint and Flashing Tape  
Plan View Wall Details - Wall Transitions, Inside and Outside Corners  
ECOMAXci® WALL SOLUTION AS WRB & AB

SCALE:  
NOT TO SCALE

REV. DATE:  
04-17-2020

FILE NO.:  
TF-01-1N-41

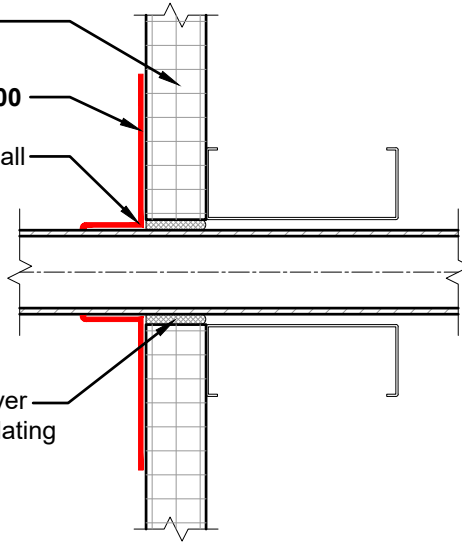
DRW. NO.:  
EM-TF-01-N-41

As a manufacturer of construction materials, Rmax provides general details as a general guide for informational purposes only. These details are not intended to replace sound engineering and architectural practices and should not be relied upon for that purpose. Rmax assumes no liability with respect to the design of the system. The architect, consultant and/or engineer or design professional for a particular project bears the sole responsibility for the design of the system, for the preparation and approval of the project specifications, details and shop drawings, and for determining their suitability for a particular project or application. **Rmax makes no warranty of any kind, either expressed or implied, as to the content of this guide detail. Rmax shall not be responsible under any legal theory to any third party for any direct or consequential damages of any kind arising from the use of this guide detail. All products and services provided by Rmax are subject to its terms and conditions of sale available at [www.Rmax.com](http://www.Rmax.com).**

ECOMAXci® FR  
Air Barrier

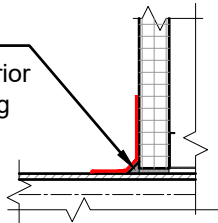
Rmax R-SEAL 6000

Install tape tight to all  
surfaces



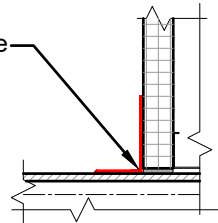
NOTE: Fill joints over  
1/8" wide with insulating  
foam

Provide sealant in  
corner to fill void prior  
to installing flashing  
tape



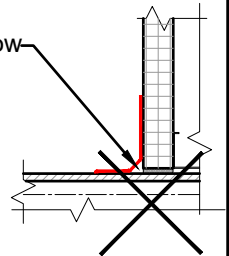
**BEST PRACTICE  
CORNER FLASHING**

Install flashing tape  
fully into corner



**COMMON PRACTICE  
CORNER FLASHING**

Do not create hollow  
space behind  
flashing tape



**IMPROPER PRACTICE  
CORNER FLASHING**

These details are intended to supplement the *ECOMAXci® Wall Solution Installation Instructions* located at [www.Rmax.com](http://www.Rmax.com); which should be consulted for additional guidance and installation requirements. Where discrepancies occur, the installation instructions supersede these details. at [www.Rmax.com](http://www.Rmax.com)



**Rmax**

13524 Welch Road  
Dallas, TX 75244  
Phone: (972)-850-3604  
Email: [Technical@Rmax.com](mailto:Technical@Rmax.com)

DRAWING NAME:

NEUTRAL CLADDING - Adhered Joint and Flashing Tape  
Wall Penetration Details - Using Tape Flashing  
ECOMAXci® WALL SOLUTION AS WRB & AB

SCALE:

NOT TO SCALE

REV. DATE:

04-17-2020

FILE NO.:

TF-01-N-51

DRW. NO.:

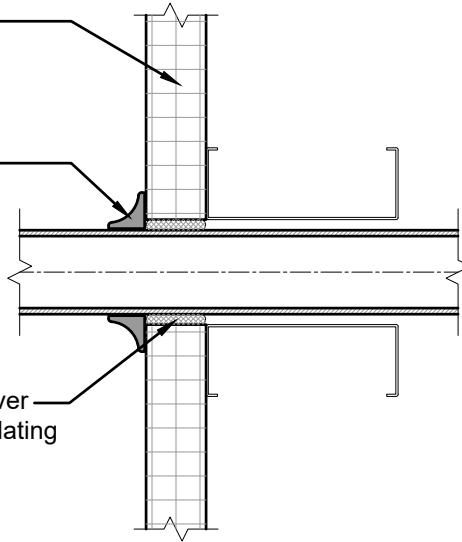
EM-TF-01-N-51

As a manufacturer of construction materials, Rmax provides general details as a general guide for informational purposes only. These details are not intended to replace sound engineering and architectural practices and should not be relied upon for that purpose. Rmax assumes no liability with respect to the design of the system. The architect, consultant and/or engineer or design professional for a particular project bears the sole responsibility for the design of the system, for the preparation and approval of the project specifications, details and shop drawings, and for determining their suitability for a particular project or application. **Rmax makes no warranty of any kind, either expressed or implied, as to the content of this guide detail. Rmax shall not be responsible under any legal theory to any third party for any direct or consequential damages of any kind arising from the use of this guide detail. All products and services provided by Rmax are subject to its terms and conditions of sale available at [www.Rmax.com](http://www.Rmax.com).**

ECOMAXci® FR  
Air Barrier

Sealant

NOTE: Fill joints over  
1/8" wide with insulating  
foam



**SMALL / IRREGULAR PENETRATION**

These details are intended to supplement the *ECOMAXci® Wall Solution Installation Instructions* located at [www.Rmax.com](http://www.Rmax.com); which should be consulted for additional guidance and installation requirements. Where discrepancies occur, the installation instructions supersede these details. at [www.Rmax.com](http://www.Rmax.com)



**Rmax**

13524 Welch Road  
Dallas, TX 75244  
Phone: (972)-850-3604  
Email: [Technical@Rmax.com](mailto:Technical@Rmax.com)

DRAWING NAME:

NEUTRAL CLADDING - Adhered Joint and Flashing Tape  
Wall Penetration Details - Using Sealant  
ECOMAXci® WALL SOLUTION AS WRB & AB

SCALE:

NOT TO SCALE

REV. DATE:

04-17-2020

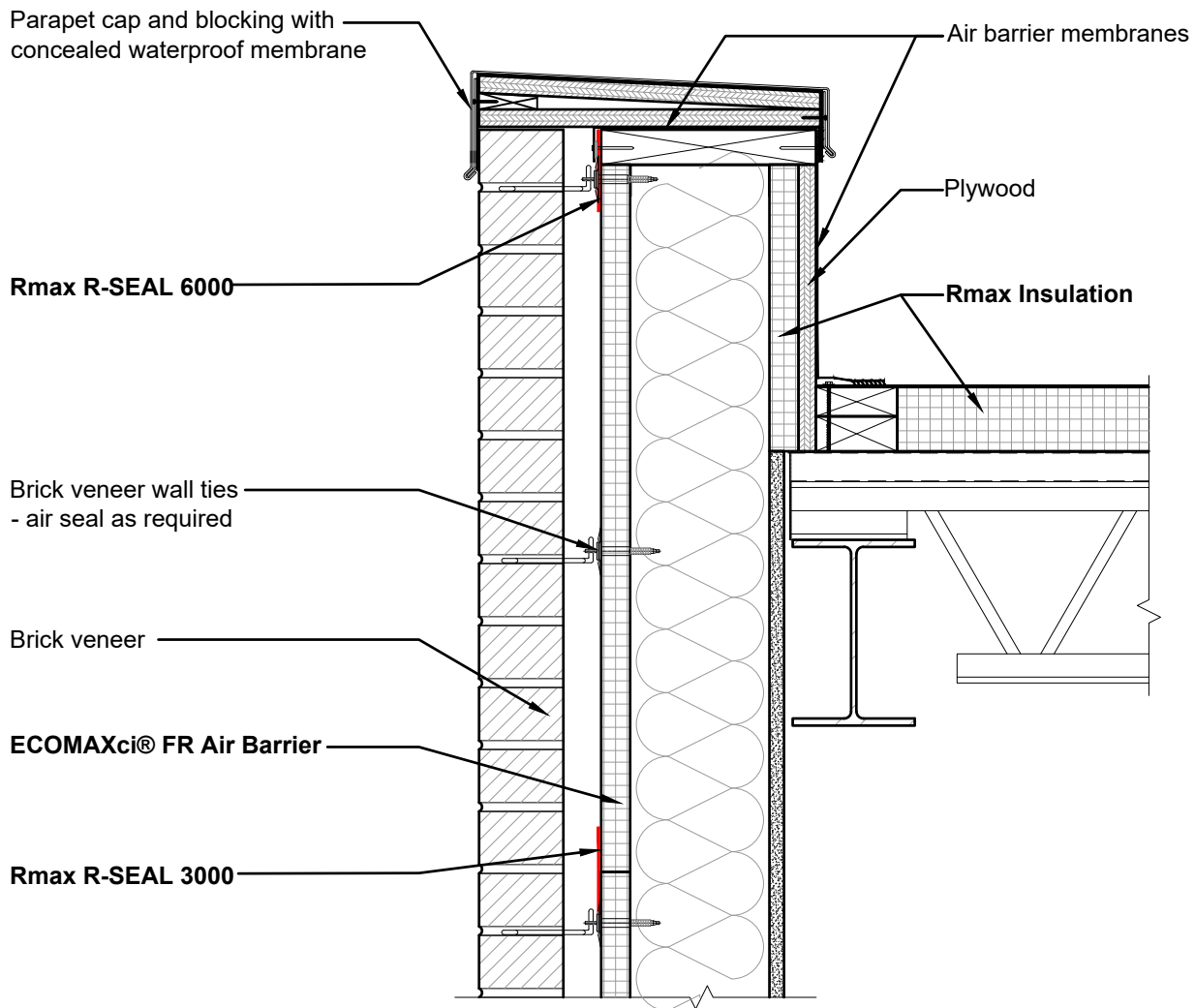
FILE NO.:

TF-01-1N-52

DRW. NO.:

EM-TF-01-N-52

As a manufacturer of construction materials, Rmax provides general details as a general guide for informational purposes only. These details are not intended to replace sound engineering and architectural practices and should not be relied upon for that purpose. Rmax assumes no liability with respect to the design of the system. The architect, consultant and/or engineer or design professional for a particular project bears the sole responsibility for the design of the system, for the preparation and approval of the project specifications, details and shop drawings, and for determining their suitability for a particular project or application. **Rmax makes no warranty of any kind, either expressed or implied, as to the content of this guide detail. Rmax shall not be responsible under any legal theory to any third party for any direct or consequential damages of any kind arising from the use of this guide detail.** All products and services provided by Rmax are subject to its terms and conditions of sale available at [www.Rmax.com](http://www.Rmax.com).



These details are intended to supplement the *ECOMAXci® Wall Solution Installation Instructions* located at [www.Rmax.com](http://www.Rmax.com); which should be consulted for additional guidance and installation requirements. Where discrepancies occur, the installation instructions supersede these details. at [www.Rmax.com](http://www.Rmax.com)



**Rmax**

13524 Welch Road  
 Dallas, TX 75244  
 Phone: (972)-850-3604  
 Email: [Technical@Rmax.com](mailto:Technical@Rmax.com)

DRAWING NAME:

MASONRY CLADDING - Adhered Joint and Flashing Tape  
 Wall at Roof Parapet - Extended Stud - Insulated Parapet  
 ECOMAXci® WALL SOLUTION AS WRB & AB

SCALE:  
 NOT TO SCALE

REV. DATE:  
 04-17-2020

FILE NO.:  
 TF-01-2M-11

DRW. NO.:  
 EM-TF-01-M-11

As a manufacturer of construction materials, Rmax provides general details as a general guide for informational purposes only. These details are not intended to replace sound engineering and architectural practices and should not be relied upon for that purpose. Rmax assumes no liability with respect to the design of the system. The architect, consultant and/or engineer or design professional for a particular project bears the sole responsibility for the design of the system, for the preparation and approval of the project specifications, details and shop drawings, and for determining their suitability for a particular project or application. **Rmax makes no warranty of any kind, either expressed or implied, as to the content of this guide detail. Rmax shall not be responsible under any legal theory to any third party for any direct or consequential damages of any kind arising from the use of this guide detail. All products and services provided by Rmax are subject to its terms and conditions of sale available at [www.Rmax.com](http://www.Rmax.com).**

**ECOMAXci® FR Air Barrier**

Brick veneer wall ties

Brick veneer

See large scale detail below

Shelf angle for masonry support

**Rmax R-SEAL 6000**

Note - Loop material into joint to allow for movement

Foam backer rod

Note - For the purpose of graphic representation, insulation in this graphic may have been reduced in areas of flashing or framing materials for clarity. Full thickness of insulation is to be maintained in actual construction.

**Rmax R-SEAL 3000**

**Rmax R-SEAL 3000 at joint**

**Rmax R-SEAL 6000**

Metal flashing as specified

Air barrier sealant at joint

These details are intended to supplement the *ECOMAXci® Wall Solution Installation Instructions* located at [www.Rmax.com](http://www.Rmax.com); which should be consulted for additional guidance and installation requirements. Where discrepancies occur, the installation instructions supersede these details. at [www.Rmax.com](http://www.Rmax.com)



**Rmax**

13524 Welch Road  
Dallas, TX 75244  
Phone: (972)-850-3604  
Email: [Technical@Rmax.com](mailto:Technical@Rmax.com)

DRAWING NAME:

MASONRY CLADDING - Adhered Joint and Flashing Tape  
Wall at Slab Edge - At Shelf Angle - With Deflection Joint  
ECOMAXci® WALL SOLUTION AS WRB & AB

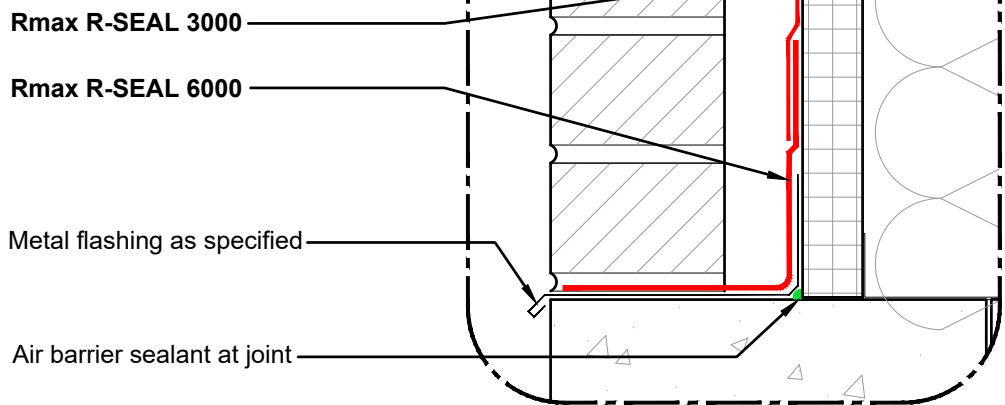
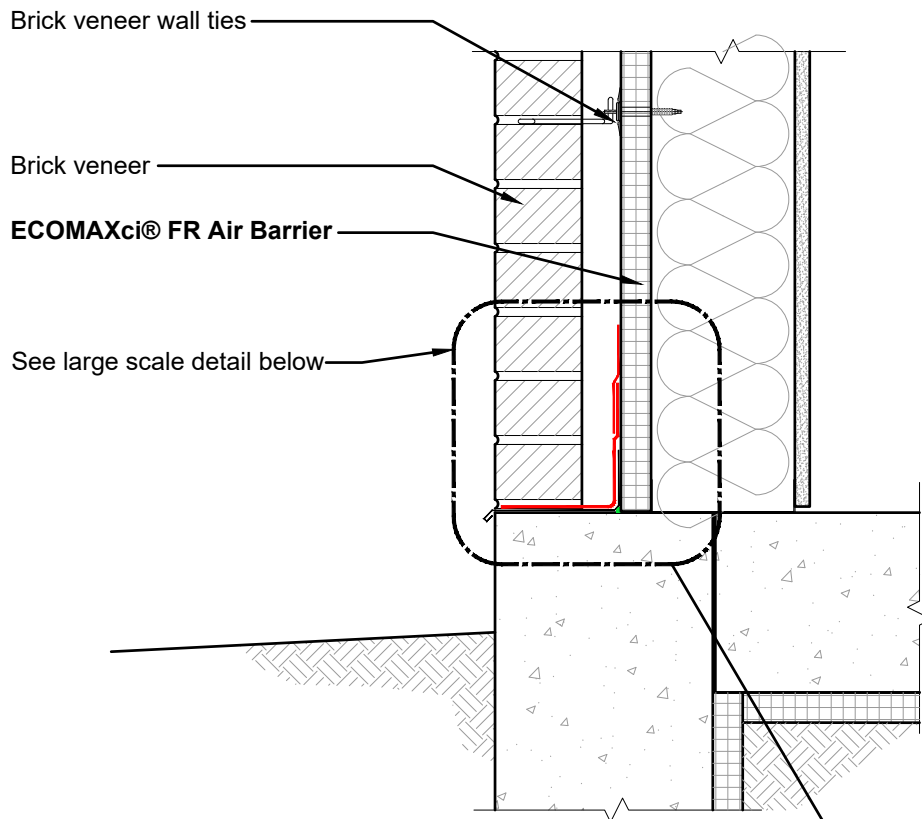
SCALE:  
NOT TO SCALE

REV. DATE:  
04-17-2020

FILE NO.:  
TF-01-2M-12

DRW. NO.:  
EM-TF-01-M-12

As a manufacturer of construction materials, Rmax provides general details as a general guide for informational purposes only. These details are not intended to replace sound engineering and architectural practices and should not be relied upon for that purpose. Rmax assumes no liability with respect to the design of the system. The architect, consultant and/or engineer or design professional for a particular project bears the sole responsibility for the design of the system, for the preparation and approval of the project specifications, details and shop drawings, and for determining their suitability for a particular project or application. **Rmax makes no warranty of any kind, either expressed or implied, as to the content of this guide detail. Rmax shall not be responsible under any legal theory to any third party for any direct or consequential damages of any kind arising from the use of this guide detail. All products and services provided by Rmax are subject to its terms and conditions of sale available at [www.Rmax.com](http://www.Rmax.com).**



These details are intended to supplement the *ECOMAXci® Wall Solution Installation Instructions* located at [www.Rmax.com](http://www.Rmax.com); which should be consulted for additional guidance and installation requirements. Where discrepancies occur, the installation instructions supersede these details. at [www.Rmax.com](http://www.Rmax.com)



**Rmax**  
 13524 Welch Road  
 Dallas, TX 75244  
 Phone: (972)-850-3604  
 Email: [Technical@Rmax.com](mailto:Technical@Rmax.com)

DRAWING NAME: <b>MASONRY CLADDING - Adhered Joint and Flashing Tape</b> <b>Wall at Foundation and Floor Slab - With Brick Sill</b> <b>ECOMAXci® WALL SOLUTION AS WRB &amp; AB</b>			
SCALE: NOT TO SCALE	REV. DATE: 04-17-2020	FILE NO.: TF-01-2M-13	DRW. NO.: EM-TF-01-M-13

As a manufacturer of construction materials, Rmax provides general details as a general guide for informational purposes only. These details are not intended to replace sound engineering and architectural practices and should not be relied upon for that purpose. Rmax assumes no liability with respect to the design of the system. The architect, consultant and/or engineer or design professional for a particular project bears the sole responsibility for the design of the system, for the preparation and approval of the project specifications, details and shop drawings, and for determining their suitability for a particular project or application. **Rmax makes no warranty of any kind, either expressed or implied, as to the content of this guide detail. Rmax shall not be responsible under any legal theory to any third party for any direct or consequential damages of any kind arising from the use of this guide detail. All products and services provided by Rmax are subject to its terms and conditions of sale available at [www.Rmax.com](http://www.Rmax.com).**



## ECOMAXci® Wall Solution Details

Continuous Insulation As Water Resistive Barrier and Air Barrier Over Metal Studs

### R-SEAL 2000 LF

#### Neutral Cladding and Masonry Cladding Details

Details utilize liquid flashing

Details in the various groups on this page may illustrate a combination of liquid flashing and adhered flashing tapes where appropriate.

#### NEUTRAL CLADDING DETAILS - LF Drawing No.

Wall at Roof Parapet - Extended Stud Insulated Parapet	EM-LF-01-N-11
Wall at Floor Line - Fire Stopping and Deflection Joint Details	EM-LF-01-N-12
Wall at Foundation and Floor Slab	EM-TF-01-N-13
Rough Window Opening	EM-LF-01-N-21
Plan View Wall Details - Stationary Joints	EM-LF-01-N-31
Plan View Wall Details - Wall Expansion Joints	EM-LF-01-N-32
Plan View Wall Details - Transitions and Control Joints - Aligned Faces	EM-TF-01-N-33
Plan View Wall Details - Transitions and Control Joints - Non-Aligned Faces	EM-TF-01-N-34
Plan View Wall Details - Transitions, Inside and Outside Corners	EM-LF-01-N-41
Wall Penetration Details - Using Rmax R-SEAL 2000 LF	EM-LF-01-N-51
Wall Penetration Details - Using Rmax R-SEAL 2000 LF	EM-LF-01-N-52

#### MASONRY CLADDING DETAILS - LF Drawing No.

Wall at Roof Parapet - Extended Stud Insulated Parapet	EM-LF-01-M-11
Wall at Floor Line - At Shelf Angle With Deflection Joint	EM-LF-01-M-12
Wall at Foundation and Floor Slab With Brick Sill	EM-LF-01-M-13

These details are intended to supplement the *ECOMAXci® Wall Solution Installation Instructions* located at [www.Rmax.com](http://www.Rmax.com); which should be consulted for additional guidance and installation requirements. Where discrepancies occur, the installation instructions supersede these details. at [www.Rmax.com](http://www.Rmax.com)



# Rmax

13524 Welch Road  
Dallas, TX 75244  
Phone: (972)-850-3604  
Email: [Technical@Rmax.com](mailto:Technical@Rmax.com)

DRAWING NAME:

ECOMAXci® Wall Solution - Liquid Flashing  
List of Details - Neutral Cladding and Masonry Cladding  
ECOMAXci® WALL SOLUTION AS WRB & AB

SCALE:

NA

REV. DATE:

04-17-2020

FILE NO.:

LF-01-0G-01

DRW. NO.:

EM-LF-01-G-01

As a manufacturer of construction materials, Rmax provides general details as a general guide for informational purposes only. These details are not intended to replace sound engineering and architectural practices and should not be relied upon for that purpose. Rmax assumes no liability with respect to the design of the system. The architect, consultant and/or engineer or design professional for a particular project bears the sole responsibility for the design of the system, for the preparation and approval of the project specifications, details and shop drawings, and for determining their suitability for a particular project or application. **Rmax makes no warranty of any kind, either expressed or implied, as to the content of this guide detail. Rmax shall not be responsible under any legal theory to any third party for any direct or consequential damages of any kind arising from the use of this guide detail.** All products and services provided by Rmax are subject to its terms and conditions of sale available at [www.Rmax.com](http://www.Rmax.com).

Provide air barrier membranes to connect and seal the air barrier of wall and the roof/parapet air barriers

Rmax R-SEAL 6000

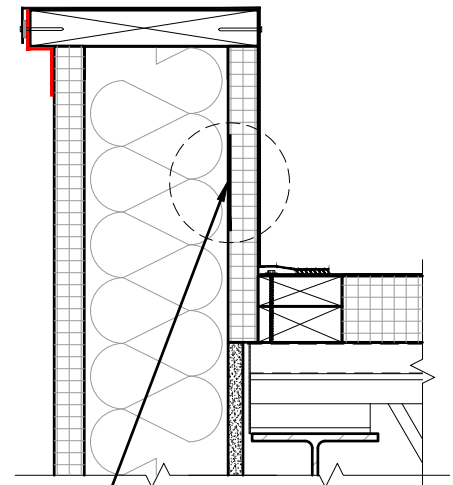
ECOMAXci® FR Air Barrier

Rmax R-SEAL 2000 LF

Plywood nailing surface for application of flashing and roof components

Rmax Insulation

Note: Parapet cap not shown in details.



Sheet metal strip attached to studs for mechanical attachment of flashing, and roof components

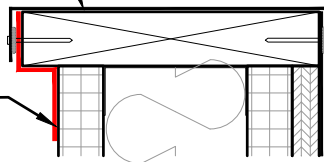
**ALTERNATIVE MEANS TO PROVIDE FOR ATTACHMENT TO BACK SIDE OF PARAPET**

Note: In all cases below, extend R-SEAL 6000 onto face of blocking to allow for connection with roof/parapet air barriers.

Note: Parapet cap not shown in details.

Extend cap over materials at each face - Bond to adjacent materials or apply compatible sealant - Mechanically attach as required

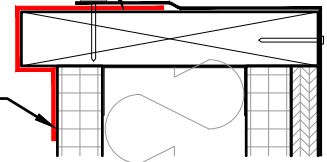
Rmax R-SEAL 6000



**TWO STAGE PARAPET AIR BARRIER CLOSURE - ROOFER OR THIRD PARTY FINALIZED**

Extend roof flashing over wall flashing material - Bond to wall flashing or apply compatible sealant - Mechanically attach as required

Rmax R-SEAL 6000



**PARAPET AIR BARRIER CLOSURE ONE STAGE ROOF CAP AND FLASHING - ROOFER FINALIZED**

These details are intended to supplement the *ECOMAXci® Wall Solution Installation Instructions* located at [www.Rmax.com](http://www.Rmax.com); which should be consulted for additional guidance and installation requirements. Where discrepancies occur, the installation instructions supersede these details. at [www.Rmax.com](http://www.Rmax.com)



**Rmax**

13524 Welch Road  
Dallas, TX 75244  
Phone: (972)-850-3604  
Email: [Technical@Rmax.com](mailto:Technical@Rmax.com)

DRAWING NAME:

NEUTRAL CLADDING - Liquid Flashing  
Wall at Roof Parapet - Extended Stud - Insulated Parapet  
ECOMAXci® WALL SOLUTION AS WRB & AB

SCALE:

NOT TO SCALE

REV. DATE:

04-17-2020

FILE NO.:

LF-01-1N-11

DRW. NO.:

EM-LF-01-N-11

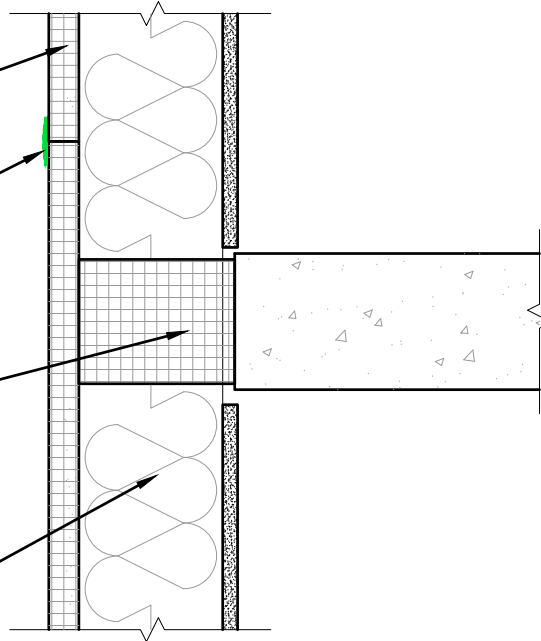
As a manufacturer of construction materials, Rmax provides general details as a general guide for informational purposes only. These details are not intended to replace sound engineering and architectural practices and should not be relied upon for that purpose. Rmax assumes no liability with respect to the design of the system. The architect, consultant and/or engineer or design professional for a particular project bears the sole responsibility for the design of the system, for the preparation and approval of the project specifications, details and shop drawings, and for determining their suitability for a particular project or application. Rmax makes no warranty of any kind, either expressed or implied, as to the content of this guide detail. Rmax shall not be responsible under any legal theory to any third party for any direct or consequential damages of any kind arising from the use of this guide detail. All products and services provided by Rmax are subject to its terms and conditions of sale available at [www.Rmax.com](http://www.Rmax.com).

ECOMAXci® FR Air Barrier

Rmax R-SEAL 2000 LF

Fire Stop Assembly

Metal studs extend continuously in front of structural floor slab



### FLOOR LINE FIRE STOPPING DETAIL

ECOMAXci® FR Air Barrier

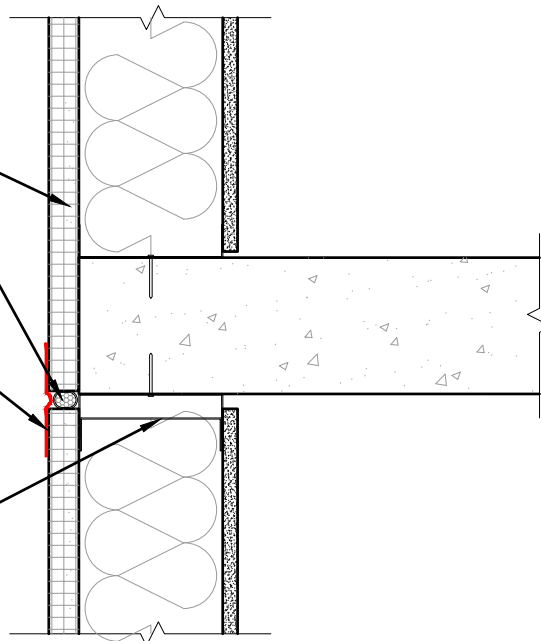
Foam backer rod

Rmax R-SEAL 6000

Note - Loop material into joint, to allow for movement

Deflection track at metal studs.

Note - Do not attach top of board to either component of deflection track; attach only to vertical studs.



### FLOOR LINE DEFLECTION JOINT DETAIL

These details are intended to supplement the *ECOMAXci® Wall Solution Installation Instructions* located at [www.Rmax.com](http://www.Rmax.com); which should be consulted for additional guidance and installation requirements. Where discrepancies occur, the installation instructions supersede these details. at [www.Rmax.com](http://www.Rmax.com)



**Rmax**

13524 Welch Road  
Dallas, TX 75244  
Phone: (972)-850-3604  
Email: [Technical@Rmax.com](mailto:Technical@Rmax.com)

DRAWING NAME:

NEUTRAL CLADDING - Liquid Flashing  
Wall at Floor Line - Fire Stopping and Deflection Joint Details  
ECOMAXci® WALL SOLUTION AS WRB & AB

SCALE:

NOT TO SCALE

REV. DATE:

04-17-2020

FILE NO.:

LF-01-1N-12

DRW. NO.:

EM-LF-01-N-12

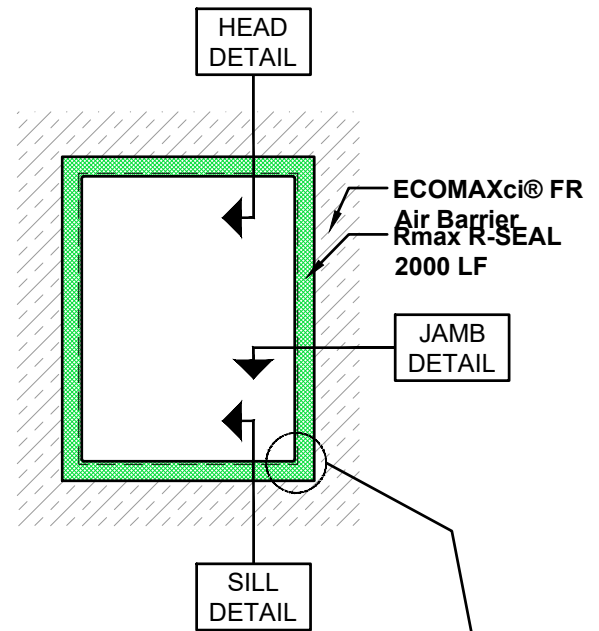
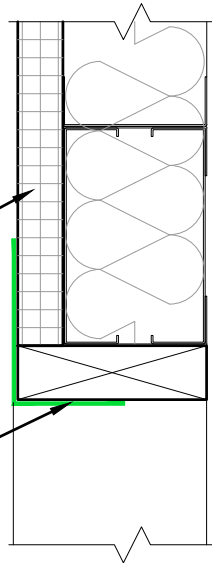
As a manufacturer of construction materials, Rmax provides general details as a general guide for informational purposes only. These details are not intended to replace sound engineering and architectural practices and should not be relied upon for that purpose. Rmax assumes no liability with respect to the design of the system. The architect, consultant and/or engineer or design professional for a particular project bears the sole responsibility for the design of the system, for the preparation and approval of the project specifications, details and shop drawings, and for determining their suitability for a particular project or application. Rmax makes no warranty of any kind, either expressed or implied, as to the content of this guide detail. Rmax shall not be responsible under any legal theory to any third party for any direct or consequential damages of any kind arising from the use of this guide detail. All products and services provided by Rmax are subject to its terms and conditions of sale available at [www.Rmax.com](http://www.Rmax.com).

ECOMAXci® FR Air Barrier

Rmax R-SEAL 2000 LF

**WINDOW OPENING HEAD**

- SECTION



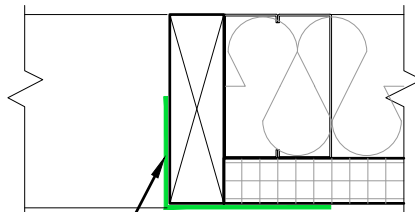
**WINDOW OPENING**

- ELEVATION

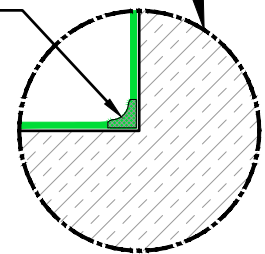
Rmax R-SEAL 2000 LF

**WINDOW OPENING JAMB**

- SECTION



Provide fillet of Rmax R-SEAL 2000 LF in corners or window opening prior to tooling liquid flashing on to adjacent surfaces

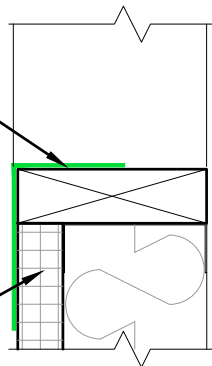


Rmax R-SEAL 2000 LF

ECOMAXci® FR Air Barrier

**WINDOW OPENING SILL**

- SECTION



These details are intended to supplement the *ECOMAXci® Wall Solution Installation Instructions* located at [www.Rmax.com](http://www.Rmax.com); which should be consulted for additional guidance and installation requirements. Where discrepancies occur, the installation instructions supersede these details. at [www.Rmax.com](http://www.Rmax.com)



**Rmax**

13524 Welch Road  
Dallas, TX 75244  
Phone: (972)-850-3604  
Email: [Technical@Rmax.com](mailto:Technical@Rmax.com)

DRAWING NAME:

NEUTRAL CLADDING - Liquid Flashing  
Rough Window Opening  
ECOMAXci® WALL SOLUTION AS WRB & AB

SCALE:  
NOT TO SCALE

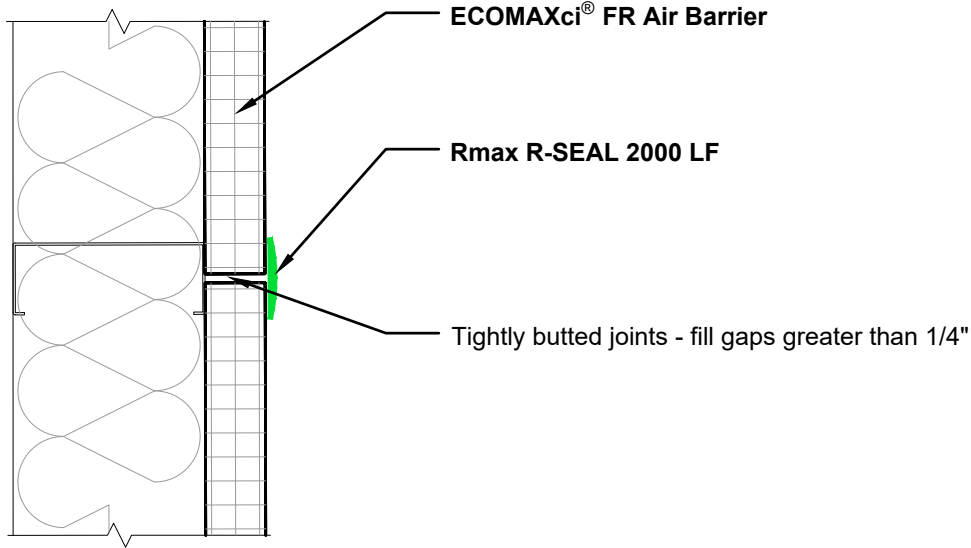
REV. DATE:  
04-17-2020

FILE NO.:  
LF-01-1N-21

DRW. NO.:  
EM-LF-01-N-21

As a manufacturer of construction materials, Rmax provides general details as a general guide for informational purposes only. These details are not intended to replace sound engineering and architectural practices and should not be relied upon for that purpose. Rmax assumes no liability with respect to the design of the system. The architect, consultant and/or engineer or design professional for a particular project bears the sole responsibility for the design of the system, for the preparation and approval of the project specifications, details and shop drawings, and for determining their suitability for a particular project or application. Rmax makes no warranty of any kind, either expressed or implied, as to the content of this guide detail. Rmax shall not be responsible under any legal theory to any third party for any direct or consequential damages of any kind arising from the use of this guide detail. All products and services provided by Rmax are subject to its terms and conditions of sale available at [www.Rmax.com](http://www.Rmax.com).

Note: Detail applies at horizontal joints (not backed by metal stud) as well as at vertical joints which must fall on the metal stud.



**STATIONARY JOINT IN ECOMAXci® FR Air Barrier**

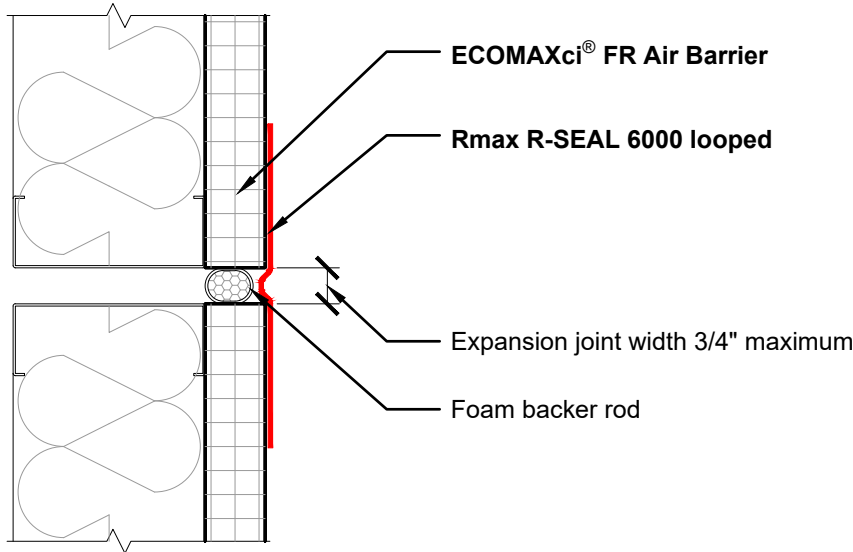
These details are intended to supplement the *ECOMAXci® Wall Solution Installation Instructions* located at [www.Rmax.com](http://www.Rmax.com); which should be consulted for additional guidance and installation requirements. Where discrepancies occur, the installation instructions supersede these details. at [www.Rmax.com](http://www.Rmax.com)



**Rmax**  
 13524 Welch Road  
 Dallas, TX 75244  
 Phone: (972)-850-3604  
 Email: [Technical@Rmax.com](mailto:Technical@Rmax.com)

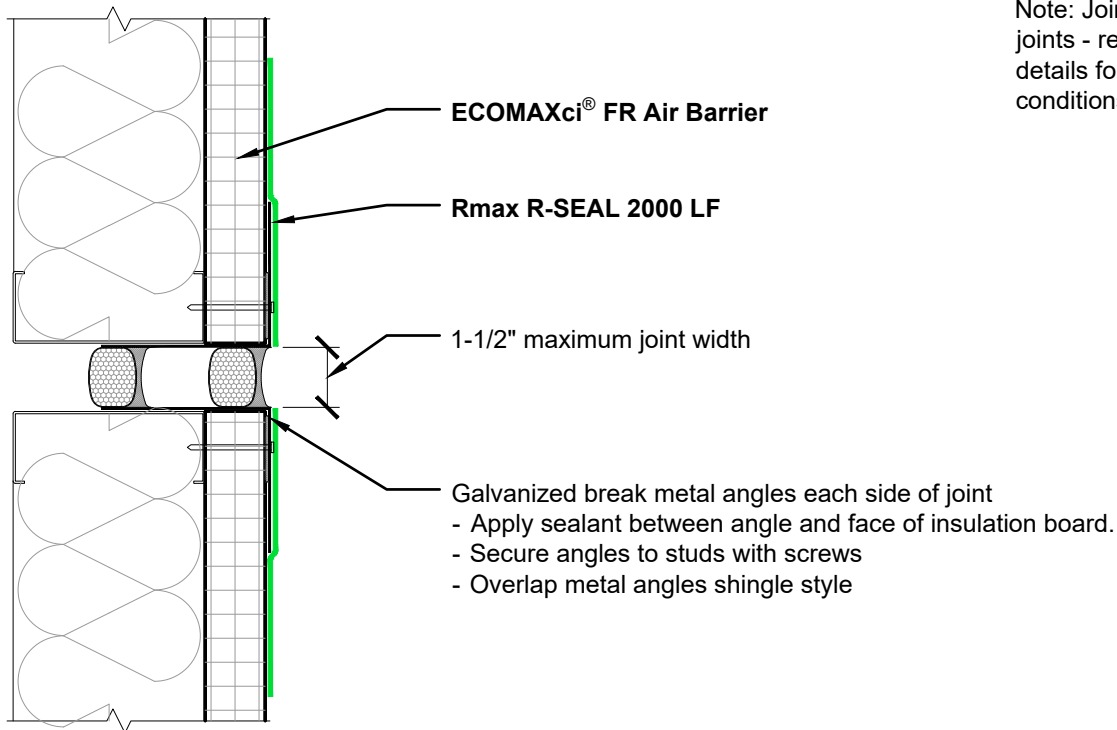
DRAWING NAME:			
NEUTRAL CLADDING - Liquid Flashing Plan View Wall Details - Stationary Joints ECOMAXci® WALL SOLUTION AS WRB & AB			
SCALE:	REV. DATE:	FILE NO.:	DRW. NO.:
NOT TO SCALE	04-17-2020	LF-01-1N-31	EM-LF-01-N-31

As a manufacturer of construction materials, Rmax provides general details as a general guide for informational purposes only. These details are not intended to replace sound engineering and architectural practices and should not be relied upon for that purpose. Rmax assumes no liability with respect to the design of the system. The architect, consultant and/or engineer or design professional for a particular project bears the sole responsibility for the design of the system, for the preparation and approval of the project specifications, details and shop drawings, and for determining their suitability for a particular project or application. **Rmax makes no warranty of any kind, either expressed or implied, as to the content of this guide detail. Rmax shall not be responsible under any legal theory to any third party for any direct or consequential damages of any kind arising from the use of this guide detail.** All products and services provided by Rmax are subject to its terms and conditions of sale available at [www.Rmax.com](http://www.Rmax.com).



Note: Joint shown are vertical joints - refer to deflection joint details for horizontal joint conditions

**EXPANSION JOINT (3/4" max)**



Note: Joint shown are vertical joints - refer to deflection joint details for horizontal joint conditions

**EXPANSION JOINT (3/4" TO 1-1/2" wide)**

These details are intended to supplement the *ECOMAXci® Wall Solution Installation Instructions* located at [www.Rmax.com](http://www.Rmax.com); which should be consulted for additional guidance and installation requirements. Where discrepancies occur, the installation instructions supersede these details. at [www.Rmax.com](http://www.Rmax.com)



**Rmax**  
 13524 Welch Road  
 Dallas, TX 75244  
 Phone: (972)-850-3604  
 Email: [Technical@Rmax.com](mailto:Technical@Rmax.com)

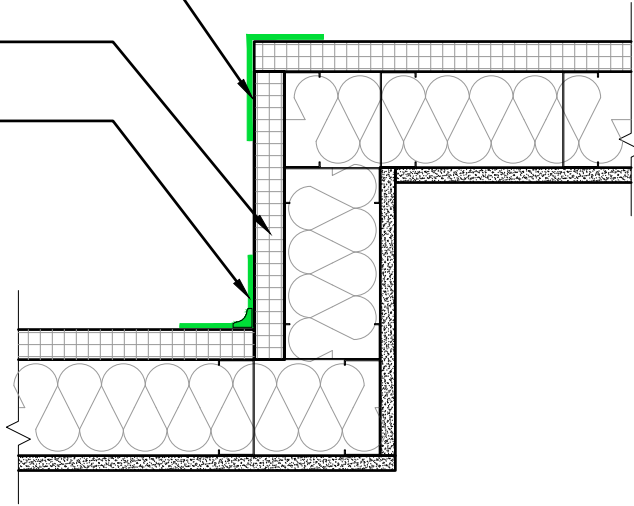
DRAWING NAME:			
NEUTRAL CLADDING - Liquid Flashing Plan View Wall Details - Wall Expansion Joints ECOMAXci® WALL SOLUTION AS WRB & AB			
SCALE:	REV. DATE:	FILE NO.:	DRW. NO.:
NOT TO SCALE	04-17-2020	LF-01-1N-32	EM-LF-01-N-32

As a manufacturer of construction materials, Rmax provides general details as a general guide for informational purposes only. These details are not intended to replace sound engineering and architectural practices and should not be relied upon for that purpose. Rmax assumes no liability with respect to the design of the system. The architect, consultant and/or engineer or design professional for a particular project bears the sole responsibility for the design of the system, for the preparation and approval of the project specifications, details and shop drawings, and for determining their suitability for a particular project or application. **Rmax makes no warranty of any kind, either expressed or implied, as to the content of this guide detail. Rmax shall not be responsible under any legal theory to any third party for any direct or consequential damages of any kind arising from the use of this guide detail. All products and services provided by Rmax are subject to its terms and conditions of sale available at [www.Rmax.com](http://www.Rmax.com).**

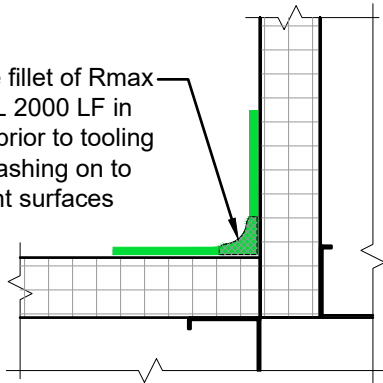
Rmax R-SEAL 2000 LF

ECOMAXci® FR Air Barrier

Rmax R-SEAL 2000 LF

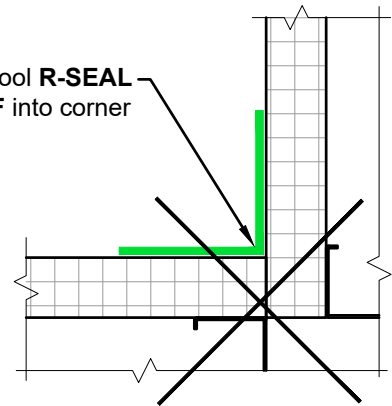


Provide fillet of Rmax R-SEAL 2000 LF in corner prior to tooling liquid flashing on to adjacent surfaces



**BEST PRACTICE  
CORNER FLASHING**

Do not tool R-SEAL 2000 LF into corner



**IMPROPER PRACTICE  
CORNER FLASHING**

These details are intended to supplement the *ECOMAXci® Wall Solution Installation Instructions* located at [www.Rmax.com](http://www.Rmax.com); which should be consulted for additional guidance and installation requirements. Where discrepancies occur, the installation instructions supersede these details. at [www.Rmax.com](http://www.Rmax.com)



**Rmax**

13524 Welch Road  
Dallas, TX 75244  
Phone: (972)-850-3604  
Email: [Technical@Rmax.com](mailto:Technical@Rmax.com)

DRAWING NAME:

NEUTRAL CLADDING - Liquid Flashing  
Plan View Wall Details - Wall Transitions, Inside and Outside Corners  
ECOMAXci® WALL SOLUTION AS WRB & AB

SCALE:

NOT TO SCALE

REV. DATE:

04-17-2020

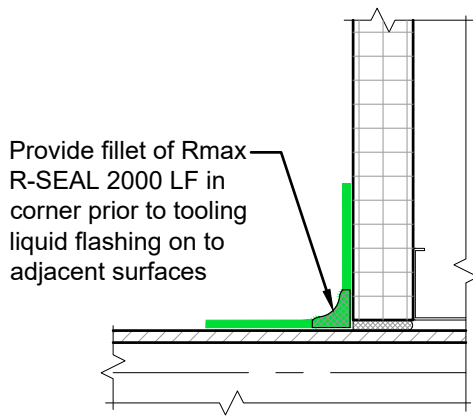
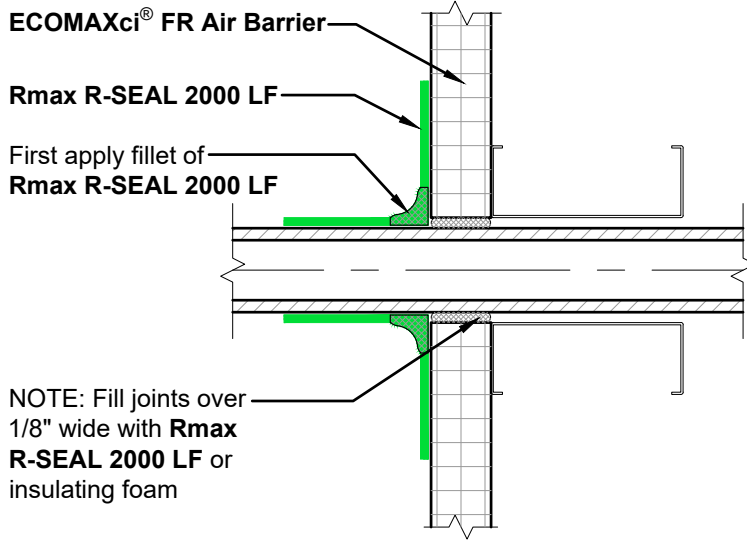
FILE NO.:

LF-01-1N-41

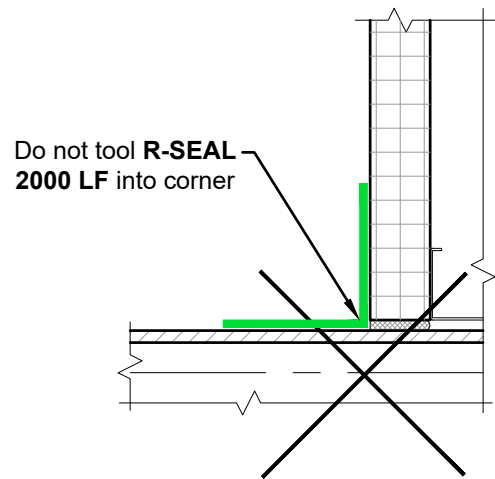
DRW. NO.:

EM-LF-01-N-41

As a manufacturer of construction materials, Rmax provides general details as a general guide for informational purposes only. These details are not intended to replace sound engineering and architectural practices and should not be relied upon for that purpose. Rmax assumes no liability with respect to the design of the system. The architect, consultant and/or engineer or design professional for a particular project bears the sole responsibility for the design of the system, for the preparation and approval of the project specifications, details and shop drawings, and for determining their suitability for a particular project or application. **Rmax makes no warranty of any kind, either expressed or implied, as to the content of this guide detail. Rmax shall not be responsible under any legal theory to any third party for any direct or consequential damages of any kind arising from the use of this guide detail. All products and services provided by Rmax are subject to its terms and conditions of sale available at [www.Rmax.com](http://www.Rmax.com).**



**BEST PRACTICE  
CORNER FLASHING**



**IMPROPER PRACTICE  
CORNER FLASHING**

These details are intended to supplement the *ECOMAXci® Wall Solution Installation Instructions* located at [www.Rmax.com](http://www.Rmax.com); which should be consulted for additional guidance and installation requirements. Where discrepancies occur, the installation instructions supersede these details. at [www.Rmax.com](http://www.Rmax.com)



**Rmax**

13524 Welch Road  
Dallas, TX 75244  
Phone: (972)-850-3604  
Email: [Technical@Rmax.com](mailto:Technical@Rmax.com)

DRAWING NAME:

NEUTRAL CLADDING - Liquid Flashing  
Wall Penetration Details  
ECOMAXci® WALL SOLUTION AS WRB & AB

SCALE:

NOT TO SCALE

REV. DATE:

04-17-2020

FILE NO.:

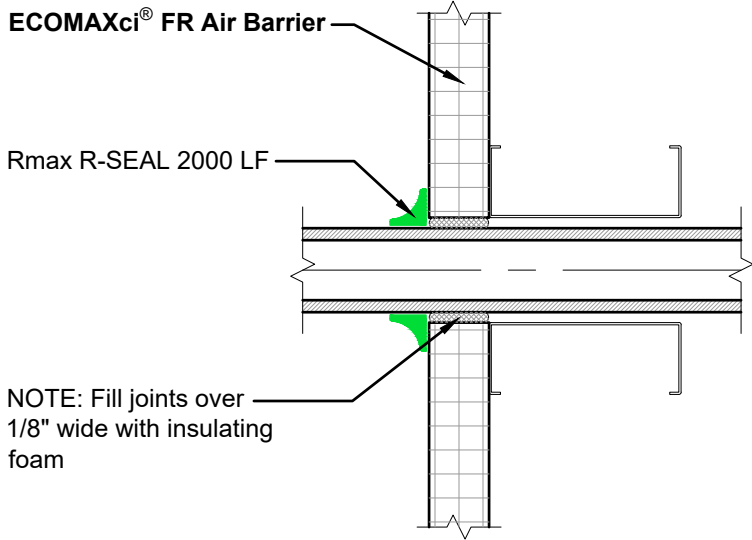
LF-01-N-51

DRW. NO.:

EM-LF-01-N-51


As a manufacturer of construction materials, Rmax provides general details as a general guide for informational purposes only. These details are not intended to replace sound engineering and architectural practices and should not be relied upon for that purpose. Rmax assumes no liability with respect to the design of the system. The architect, consultant and/or engineer or design professional for a particular project bears the sole responsibility for the design of the system, for the preparation and approval of the project specifications, details and shop drawings, and for determining their suitability for a particular project or application. Rmax makes no warranty of any kind, either expressed or implied, as to the content of this guide detail. Rmax shall not be responsible under any legal theory to any third party for any direct or consequential damages of any kind arising from the use of this guide detail. All products and services provided by Rmax are subject to its terms and conditions of sale available at [www.Rmax.com](http://www.Rmax.com).



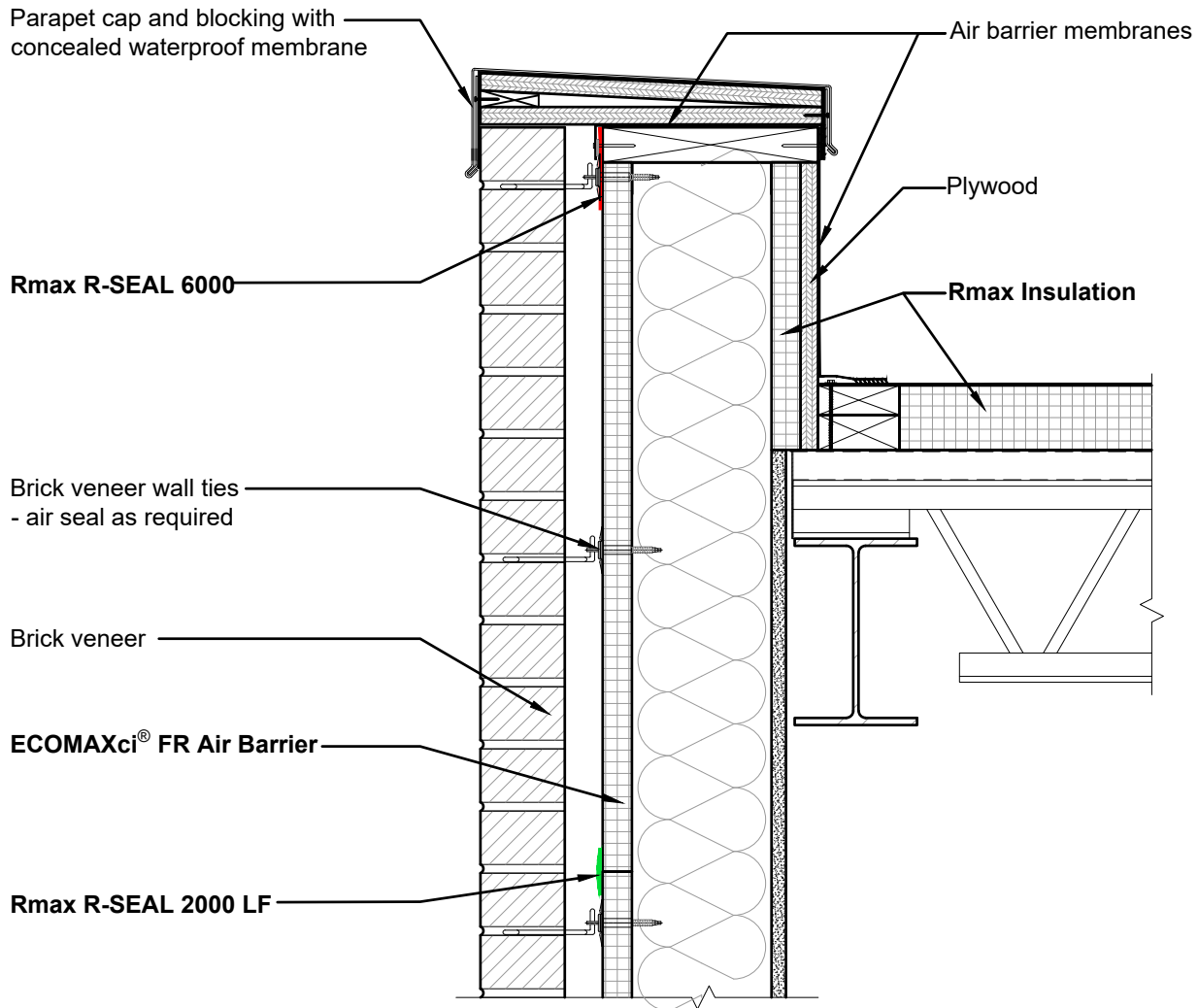


**SMALL / IRREGULAR PENETRATION**

These details are intended to supplement the *ECOMAXci® Wall Solution Installation Instructions* located at [www.Rmax.com](http://www.Rmax.com); which should be consulted for additional guidance and installation requirements. Where discrepancies occur, the installation instructions supersede these details. at [www.Rmax.com](http://www.Rmax.com)

 <p><b>Rmax</b> 13524 Welch Road Dallas, TX 75244 Phone: (972)-850-3604 Email: <a href="mailto:Technical@Rmax.com">Technical@Rmax.com</a></p>	DRAWING NAME:			NEUTRAL CLADDING - Liquid Flashing Wall Penetration Details ECOMAXci® WALL SOLUTION AS WRB & AB	
	SCALE:	REV. DATE:	FILE NO.:	DRW. NO.:	
NOT TO SCALE	04-17-2020	LF-01-1N-52	EM-LF-01-N-52		

As a manufacturer of construction materials, Rmax provides general details as a general guide for informational purposes only. These details are not intended to replace sound engineering and architectural practices and should not be relied upon for that purpose. Rmax assumes no liability with respect to the design of the system. The architect, consultant and/or engineer or design professional for a particular project bears the sole responsibility for the design of the system, for the preparation and approval of the project specifications, details and shop drawings, and for determining their suitability for a particular project or application. **Rmax makes no warranty of any kind, either expressed or implied, as to the content of this guide detail. Rmax shall not be responsible under any legal theory to any third party for any direct or consequential damages of any kind arising from the use of this guide detail. All products and services provided by Rmax are subject to its terms and conditions of sale available at [www.Rmax.com](http://www.Rmax.com).**



These details are intended to supplement the *ECOMAXci® Wall Solution Installation Instructions* located at [www.Rmax.com](http://www.Rmax.com); which should be consulted for additional guidance and installation requirements. Where discrepancies occur, the installation instructions supersede these details. at [www.Rmax.com](http://www.Rmax.com)



**Rmax**

13524 Welch Road  
 Dallas, TX 75244  
 Phone: (972)-850-3604  
 Email: [Technical@Rmax.com](mailto:Technical@Rmax.com)

DRAWING NAME:

MASONRY CLADDING - Liquid Flashing  
 Wall at Roof Parapet - Extended Stud - Insulated Parapet  
 ECOMAXci® WALL SOLUTION AS WRB & AB

SCALE:

NOT TO SCALE

REV. DATE:

04-17-2020

FILE NO.:

LF-01-2M-11

DRW. NO.:

EM-LF-01-M-11

As a manufacturer of construction materials, Rmax provides general details as a general guide for informational purposes only. These details are not intended to replace sound engineering and architectural practices and should not be relied upon for that purpose. Rmax assumes no liability with respect to the design of the system. The architect, consultant and/or engineer or design professional for a particular project bears the sole responsibility for the design of the system, for the preparation and approval of the project specifications, details and shop drawings, and for determining their suitability for a particular project or application. **Rmax makes no warranty of any kind, either expressed or implied, as to the content of this guide detail. Rmax shall not be responsible under any legal theory to any third party for any direct or consequential damages of any kind arising from the use of this guide detail. All products and services provided by Rmax are subject to its terms and conditions of sale available at [www.Rmax.com](http://www.Rmax.com).**

**ECOMAXci® FR Air Barrier**

Brick veneer wall ties

Brick veneer

See large scale detail below

Shelf angle for masonry support

**Rmax R-SEAL 6000**

Note - Loop material into joint to allow for movement

Foam backer rod

Note - For the purpose of graphic representation, insulation in this graphic may have been reduced in areas of flashing or framing materials for clarity. Full thickness of insulation is to be maintained in actual construction.

**Rmax R-SEAL 2000 LF**

**Rmax R-SEAL 2000 LF at joint**

**Rmax R-SEAL 6000**

Metal flashing as specified

**Rmax R-SEAL 2000 LF at joint**

These details are intended to supplement the *ECOMAXci® Wall Solution Installation Instructions* located at [www.Rmax.com](http://www.Rmax.com); which should be consulted for additional guidance and installation requirements. Where discrepancies occur, the installation instructions supersede these details. at [www.Rmax.com](http://www.Rmax.com)



**Rmax**

13524 Welch Road  
Dallas, TX 75244  
Phone: (972)-850-3604  
Email: [Technical@Rmax.com](mailto:Technical@Rmax.com)

DRAWING NAME:

**MASONRY CLADDING - Liquid Flashing**  
**Wall at Slab Edge - At Shelf Angle - With Deflection Joint**  
**ECOMAXci® WALL SOLUTION AS WRB & AB**

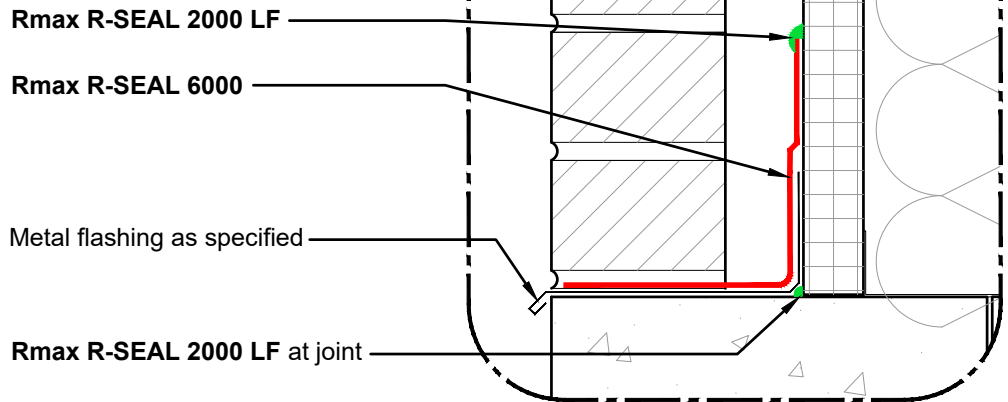
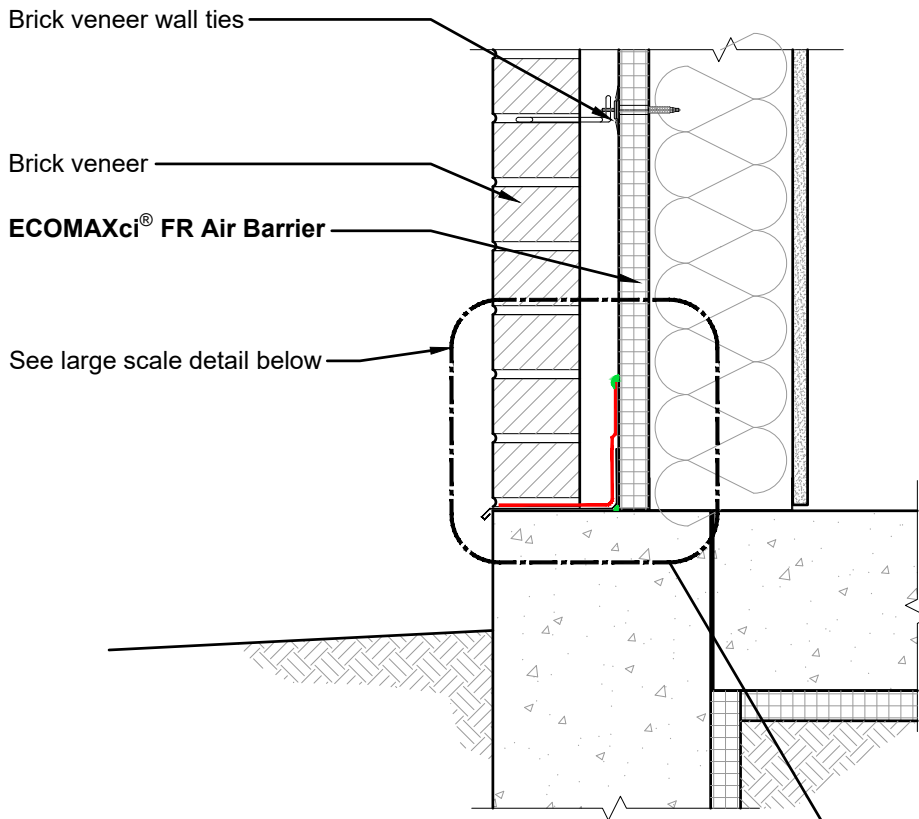
SCALE:  
**NOT TO SCALE**

REV. DATE:  
**04-17-2020**

FILE NO.:  
**LF-01-2M-12**

DRW. NO.:  
**EM-LF-01-M-12**

As a manufacturer of construction materials, Rmax provides general details as a general guide for informational purposes only. These details are not intended to replace sound engineering and architectural practices and should not be relied upon for that purpose. Rmax assumes no liability with respect to the design of the system. The architect, consultant and/or engineer or design professional for a particular project bears the sole responsibility for the design of the system, for the preparation and approval of the project specifications, details and shop drawings, and for determining their suitability for a particular project or application. **Rmax makes no warranty of any kind, either expressed or implied, as to the content of this guide detail. Rmax shall not be responsible under any legal theory to any third party for any direct or consequential damages of any kind arising from the use of this guide detail. All products and services provided by Rmax are subject to its terms and conditions of sale available at [www.Rmax.com](http://www.Rmax.com).**



These details are intended to supplement the *ECOMAXci® Wall Solution Installation Instructions* located at [www.Rmax.com](http://www.Rmax.com); which should be consulted for additional guidance and installation requirements. Where discrepancies occur, the installation instructions supersede these details. at [www.Rmax.com](http://www.Rmax.com)



**Rmax**  
 13524 Welch Road  
 Dallas, TX 75244  
 Phone: (972)-850-3604  
 Email: [Technical@Rmax.com](mailto:Technical@Rmax.com)

DRAWING NAME:

MASONRY CLADDING - Liquid Flashing  
 Wall at Foundation and Floor Slab - With Brick Sill  
 ECOMAXci® WALL SOLUTION AS WRB & AB

SCALE:  
 NOT TO SCALE

REV. DATE:  
 04-17-2020

FILE NO.:  
 LF-01-2M-13

DRW. NO.:  
 EM-LF-01-M-13

As a manufacturer of construction materials, Rmax provides general details as a general guide for informational purposes only. These details are not intended to replace sound engineering and architectural practices and should not be relied upon for that purpose. Rmax assumes no liability with respect to the design of the system. The architect, consultant and/or engineer or design professional for a particular project bears the sole responsibility for the design of the system, for the preparation and approval of the project specifications, details and shop drawings, and for determining their suitability for a particular project or application. **Rmax makes no warranty of any kind, either expressed or implied, as to the content of this guide detail. Rmax shall not be responsible under any legal theory to any third party for any direct or consequential damages of any kind arising from the use of this guide detail. All products and services provided by Rmax are subject to its terms and conditions of sale available at [www.Rmax.com](http://www.Rmax.com).**

## ECOMAXci® Wall Solution

Continuous Insulation As Water Resistive Barrier and Air Barrier Over Metal Studs

## Universal Cladding Type Details - Including Stucco, Fiber Cement and Metal Panel Systems

Details utilize all options for cladding attachment points.

Details in the various groups on this page may illustrate a combination of liquid flashing and adhered flashing tapes where appropriate.

### STUCCO CLADDING DETAILS Drawing No.

Wall at Roof Parapet - Extended Stud Insulated Parapet	EM-U-01-ST-11
Wall at Floor Line - Deflection Joint Detail	EM-U-01-ST-12
Wall at Foundation and Floor Slab	EM-U-01-ST-13

### FIBER CEMENT CLADDING DETAILS Drawing No.

Wall at Roof Parapet - Extended Stud Insulated Parapet	EM-U-01-FC-11
Wall at Foundation and Floor Slab	EM-U-01-FC-12
Attachment Details at Furring	EM-U-01-FC-13

## METAL PANEL CLADDING DETAILS Drawing No.

MCM Panel Attachment Z-Furring (Vertical)	EM-U-01-MP-11
MCM Panel Attachment Hat Channels (Horizontal)	EM-U-01-MP-12
MCM Panel Attachment Z-Furring (Vertical) and Hat Channels (Horizontal)	EM-U-01-MP-13
Formed Style Metal Panel Attachment Z-Furring (Vertical)	EM-U-01-MP-21
Formed Style Metal Panel Attachment Hat Channels (Horizontal)	EM-U-01-MP-22
Formed Style Metal Panel Attachment Z-Furring (Vertical) and Hat Channels (Horizontal)	EM-U-01-MP-23
Profile Style Metal Panel Attachment Z-Furring (Vertical)	EM-U-01-MP-26
Profile Style Metal Panel Attachment Hat Channels (Horizontal)	EM-U-01-MP-27
Profile Style Metal Panel Attachment Z-Furring (Vertical) and Hat Channels (Horizontal)	EM-U-01-MP-28

These details are intended to supplement the *ECOMAXci® Wall Solution Installation Instructions* located at [www.Rmax.com](http://www.Rmax.com); which should be consulted for additional guidance and installation requirements. Where discrepancies occur, the installation instructions supersede these details. at [www.Rmax.com](http://www.Rmax.com)



# Rmax

13524 Welch Road  
Dallas, TX 75244  
Phone: (972)-850-3604  
Email: [Technical@Rmax.com](mailto:Technical@Rmax.com)

DRAWING NAME:

ECOMAXci® Wall Solution  
List of Details - Stucco, Fiber Cement and Metal Panels Systems  
ECOMAXci® WALL SOLUTION AS WRB & AB

SCALE:

NA

REV. DATE:

04-17-2020

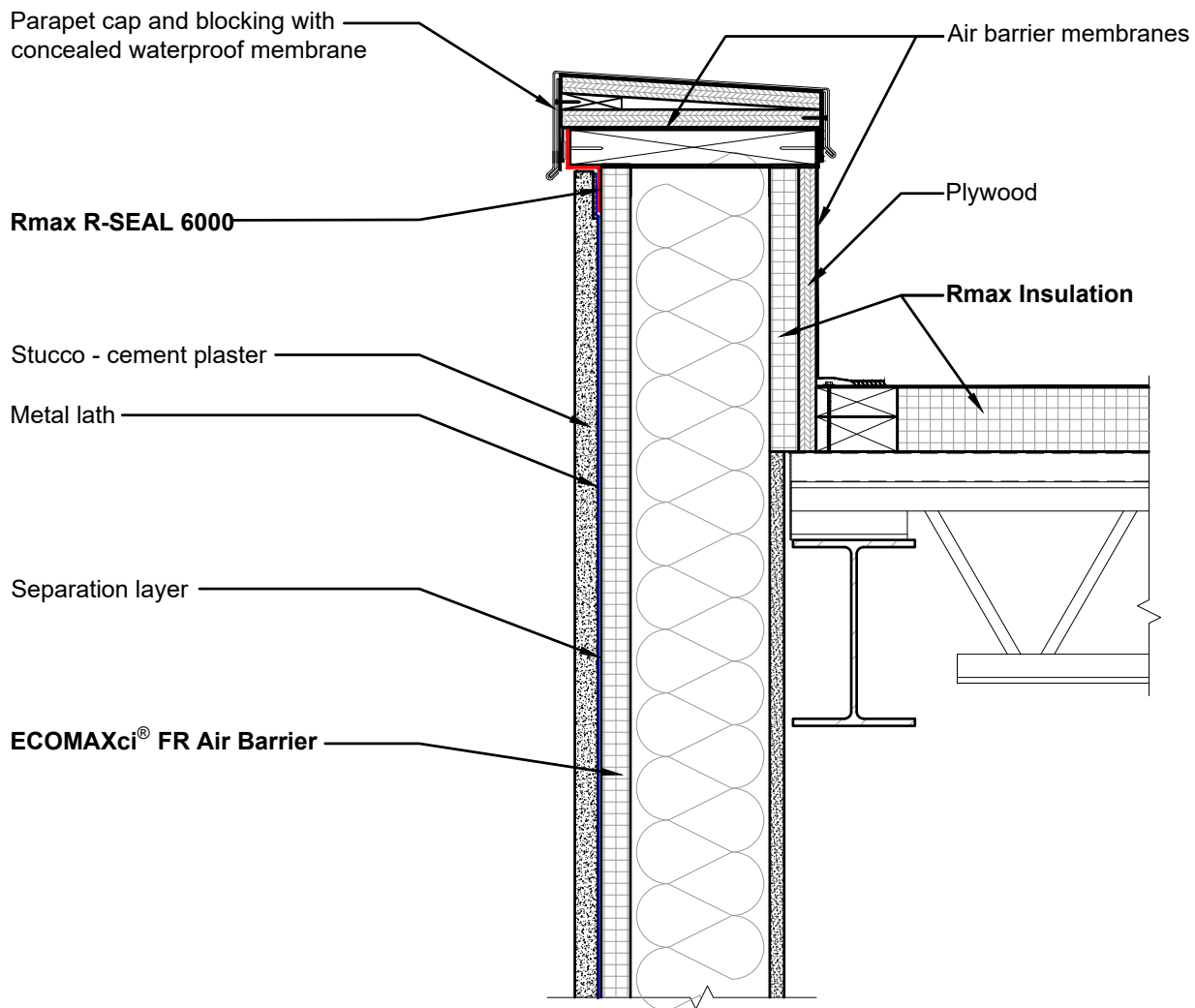
FILE NO.:

U-01-0G-01

DRW. NO.:

EM-U-01-G-01

As a manufacturer of construction materials, Rmax provides general details as a general guide for informational purposes only. These details are not intended to replace sound engineering and architectural practices and should not be relied upon for that purpose. Rmax assumes no liability with respect to the design of the system. The architect, consultant and/or engineer or design professional for a particular project bears the sole responsibility for the design of the system, for the preparation and approval of the project specifications, details and shop drawings, and for determining their suitability for a particular project or application. **Rmax makes no warranty of any kind, either expressed or implied, as to the content of this guide detail. Rmax shall not be responsible under any legal theory to any third party for any direct or consequential damages of any kind arising from the use of this guide detail. All products and services provided by Rmax are subject to its terms and conditions of sale available at [www.Rmax.com](http://www.Rmax.com).**



Note: Apply band of butyl flashing or **R-SEAL 6000** on surface of **ECOMAXci® FR Air Barrier** over vertical and horizontal framing components to which stucco lath is to be secured.

These details are intended to supplement the *ECOMAXci® Wall Solution Installation Instructions* located at [www.Rmax.com](http://www.Rmax.com); which should be consulted for additional guidance and installation requirements. Where discrepancies occur, the installation instructions supersede these details. at [www.Rmax.com](http://www.Rmax.com)



**Rmax**

13524 Welch Road  
Dallas, TX 75244  
Phone: (972)-850-3604  
Email: [Technical@Rmax.com](mailto:Technical@Rmax.com)

DRAWING NAME:

STUCCO CLADDING - Adhered Flashing Tape  
Wall at Roof Parapet - Extended Stud - Insulated Parapet  
**ECOMAXci® WALL SOLUTION AS WRB & AB**

SCALE:  
NOT TO SCALE

REV. DATE:  
04-17-2020

FILE NO.:  
U-01-4ST-11

DRW. NO.:  
EM-U-01-ST-11

As a manufacturer of construction materials, Rmax provides general details as a general guide for informational purposes only. These details are not intended to replace sound engineering and architectural practices and should not be relied upon for that purpose. Rmax assumes no liability with respect to the design of the system. The architect, consultant and/or engineer or design professional for a particular project bears the sole responsibility for the design of the system, for the preparation and approval of the project specifications, details and shop drawings, and for determining their suitability for a particular project or application. **Rmax makes no warranty of any kind, either expressed or implied, as to the content of this guide detail. Rmax shall not be responsible under any legal theory to any third party for any direct or consequential damages of any kind arising from the use of this guide detail. All products and services provided by Rmax are subject to its terms and conditions of sale available at [www.Rmax.com](http://www.Rmax.com).**

**ECOMAXci® FR Air Barrier**

Stucco - cement plaster

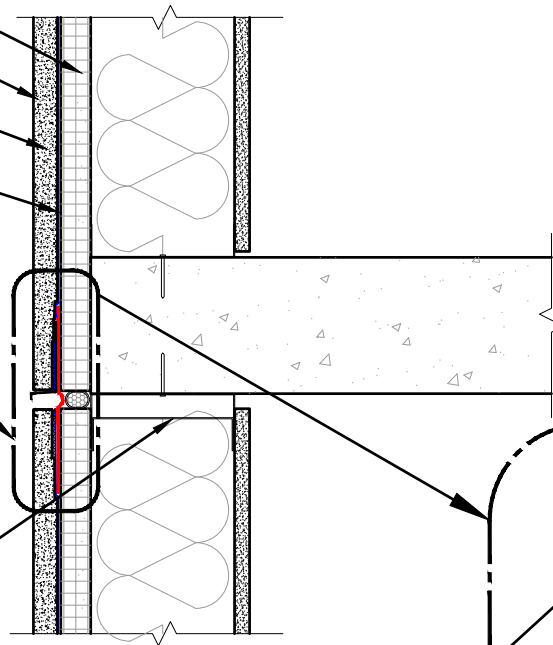
Metal lath

Separation layer

See large scale detail below

Deflection track at metal studs.

Note - Do not attach top of board to either component of deflection track; attach only to vertical studs.



Separation layer

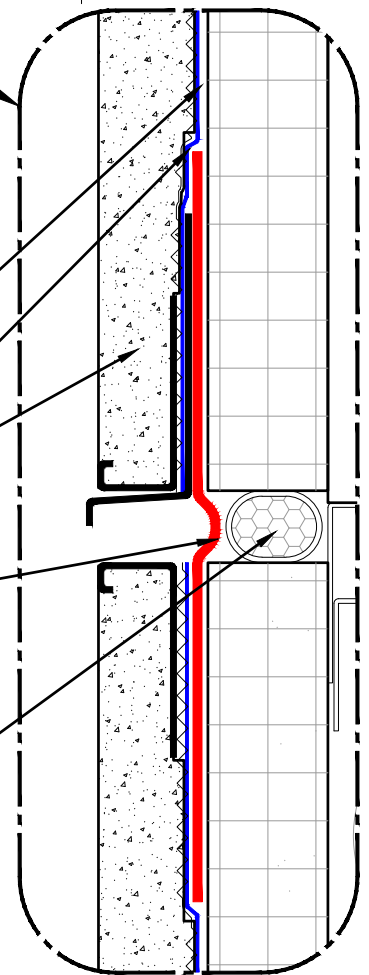
Metal Lath

Stucco - cement plaster

**Rmax R-SEAL 6000**

Note - Loop material into joint, to allow for movement

Foam backer rod



Note: Apply band of butyl flashing or **R-SEAL 6000** on surface of **ECOMAXci® FR Air Barrier** over vertical and horizontal framing components to which stucco lath is to be secured.

These details are intended to supplement the *ECOMAXci® Wall Solution Installation Instructions* located at [www.Rmax.com](http://www.Rmax.com); which should be consulted for additional guidance and installation requirements. Where discrepancies occur, the installation instructions supersede these details. at [www.Rmax.com](http://www.Rmax.com)



**Rmax**

13524 Welch Road  
Dallas, TX 75244  
Phone: (972)-850-3604  
Email: [Technical@Rmax.com](mailto:Technical@Rmax.com)

DRAWING NAME:

STUCCO CLADDING - Adhered Flashing Tape  
Wall at Floor Line - Deflection Joint Detail  
**ECOMAXci® WALL SOLUTION AS WRB & AB**

SCALE:

NOT TO SCALE

REV. DATE:

04-17-2020

FILE NO.:

U-01-4ST-12

DRW. NO.:

EM-U-01-ST-12

As a manufacturer of construction materials, Rmax provides general details as a general guide for informational purposes only. These details are not intended to replace sound engineering and architectural practices and should not be relied upon for that purpose. Rmax assumes no liability with respect to the design of the system. The architect, consultant and/or engineer or design professional for a particular project bears the sole responsibility for the design of the system, for the preparation and approval of the project specifications, details and shop drawings, and for determining their suitability for a particular project or application. **Rmax makes no warranty of any kind, either expressed or implied, as to the content of this guide detail. Rmax shall not be responsible under any legal theory to any third party for any direct or consequential damages of any kind arising from the use of this guide detail. All products and services provided by Rmax are subject to its terms and conditions of sale available at [www.Rmax.com](http://www.Rmax.com).**

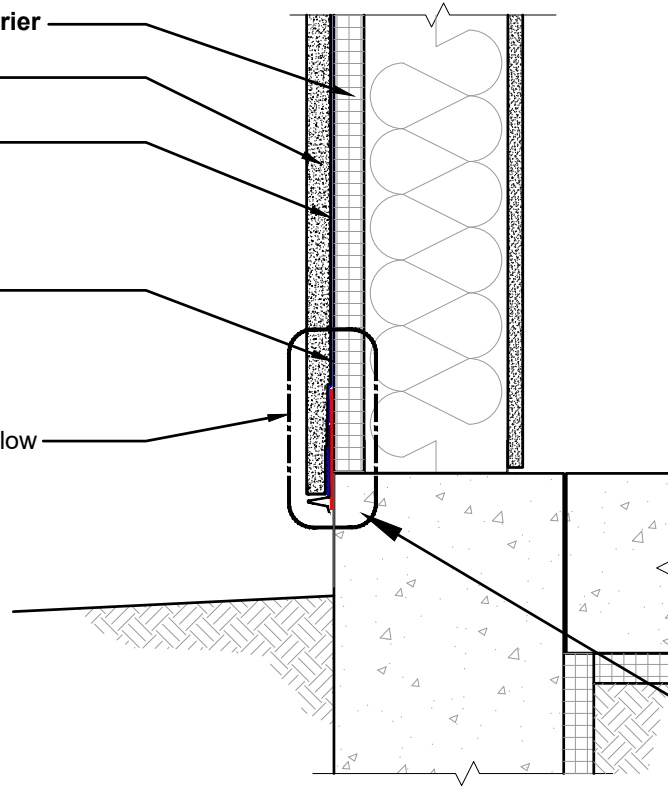
**ECOMAXci® FR Air Barrier**

Stucco - cement plaster

Metal lath

Separation layer

See large scale detail below

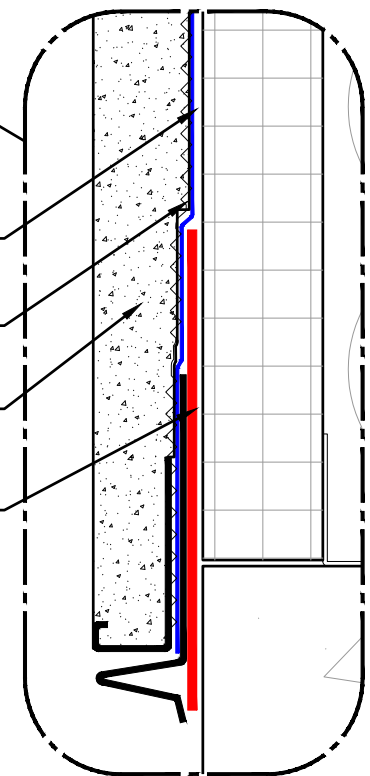


Separation layer

Metal lath

Stucco - cement plaster

**Rmax R-SEAL 6000**



Note: Apply band of butyl flashing or **R-SEAL 6000** on surface of **ECOMAXci® FR Air Barrier** over vertical and horizontal framing components to which stucco lath is to be secured.

These details are intended to supplement the *ECOMAXci® Wall Solution Installation Instructions* located at [www.Rmax.com](http://www.Rmax.com); which should be consulted for additional guidance and installation requirements. Where discrepancies occur, the installation instructions supersede these details. at [www.Rmax.com](http://www.Rmax.com)



**Rmax**

13524 Welch Road  
 Dallas, TX 75244  
 Phone: (972)-850-3604  
 Email: [Technical@Rmax.com](mailto:Technical@Rmax.com)

DRAWING NAME:

STUCCO CLADDING - Adhered Flashing Tape  
 Wall at Foundation and Floor Slab  
**ECOMAXci® WALL SOLUTION AS WRB & AB**

SCALE:  
NOT TO SCALE

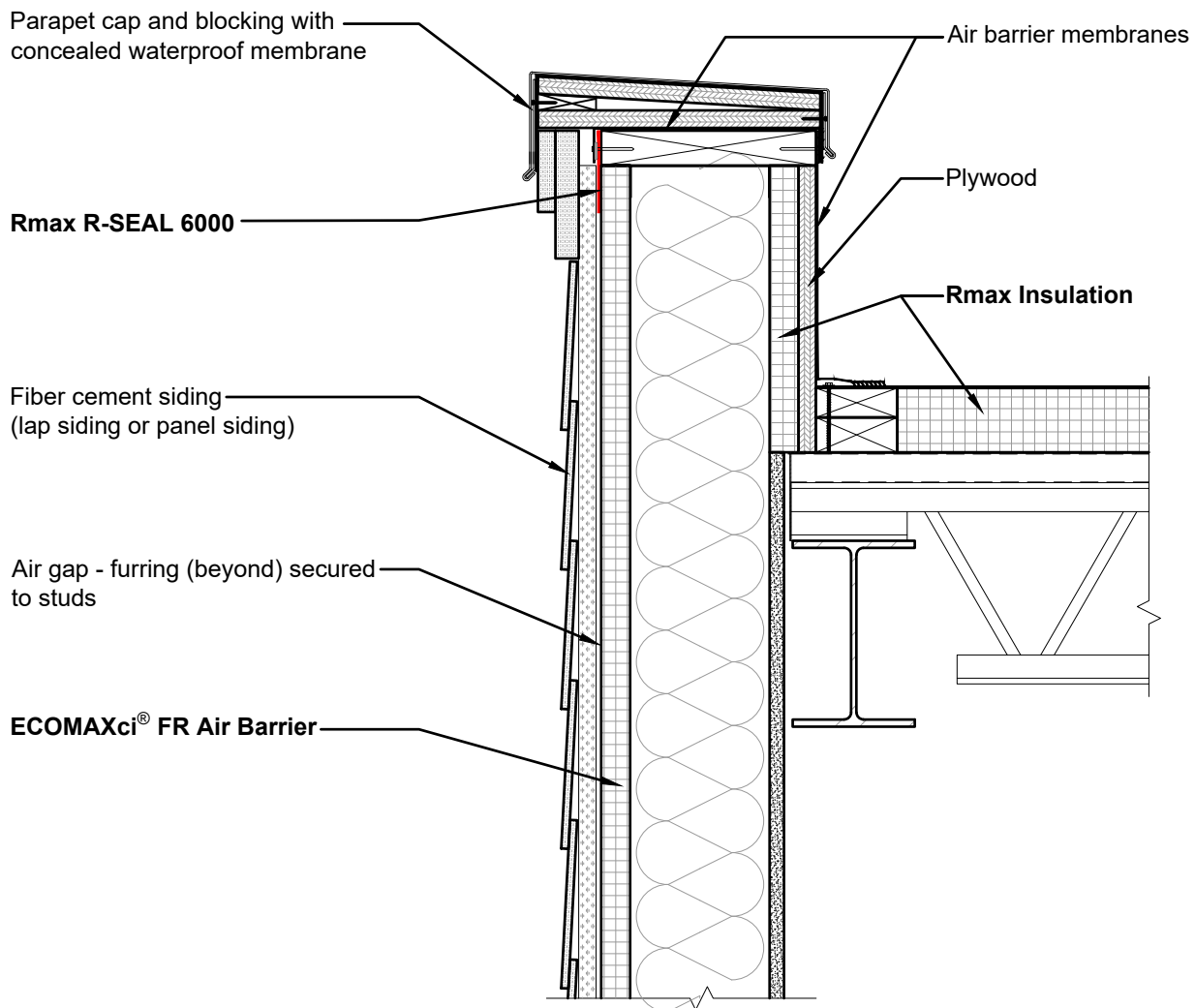
REV. DATE:  
04-17-2020

FILE NO.:  
U-01-4ST-13

DRW. NO.:  
EM-U-01-ST-13

As a manufacturer of construction materials, Rmax provides general details as a general guide for informational purposes only. These details are not intended to replace sound engineering and architectural practices and should not be relied upon for that purpose. Rmax assumes no liability with respect to the design of the system. The architect, consultant and/or engineer or design professional for a particular project bears the sole responsibility for the design of the system, for the preparation and approval of the project specifications, details and shop drawings, and for determining their suitability for a particular project or application. **Rmax makes no warranty of any kind, either expressed or implied, as to the content of this guide detail. Rmax shall not be responsible under any legal theory to any third party for any direct or consequential damages of any kind arising from the use of this guide detail. All products and services provided by Rmax are subject to its terms and conditions of sale available at [www.Rmax.com](http://www.Rmax.com).**





**NOTE: For typical attachment details at furring - refer to drawing EM-U-01-FC-13**

These details are intended to supplement the *ECOMAXci® Wall Solution Installation Instructions* located at [www.Rmax.com](http://www.Rmax.com); which should be consulted for additional guidance and installation requirements. Where discrepancies occur, the installation instructions supersede these details. at [www.Rmax.com](http://www.Rmax.com)



**Rmax**

13524 Welch Road  
Dallas, TX 75244  
Phone: (972)-850-3604  
Email: [Technical@Rmax.com](mailto:Technical@Rmax.com)

DRAWING NAME: FIBER CEMENT CLADDING - Adhered Flashing Tape  
Wall at Roof Parapet - Extended Stud - Insulated Parapet  
ECOMAXci® WALL SOLUTION AS WRB & AB

SCALE:  
NOT TO SCALE

REV. DATE:  
04-17-2020

FILE NO.:  
U-01-5FC-11

DRW. NO.:  
EM-U-01-FC-11

As a manufacturer of construction materials, Rmax provides general details as a general guide for informational purposes only. These details are not intended to replace sound engineering and architectural practices and should not be relied upon for that purpose. Rmax assumes no liability with respect to the design of the system. The architect, consultant and/or engineer or design professional for a particular project bears the sole responsibility for the design of the system, for the preparation and approval of the project specifications, details and shop drawings, and for determining their suitability for a particular project or application. **Rmax makes no warranty of any kind, either expressed or implied, as to the content of this guide detail. Rmax shall not be responsible under any legal theory to any third party for any direct or consequential damages of any kind arising from the use of this guide detail. All products and services provided by Rmax are subject to its terms and conditions of sale available at [www.Rmax.com](http://www.Rmax.com).**

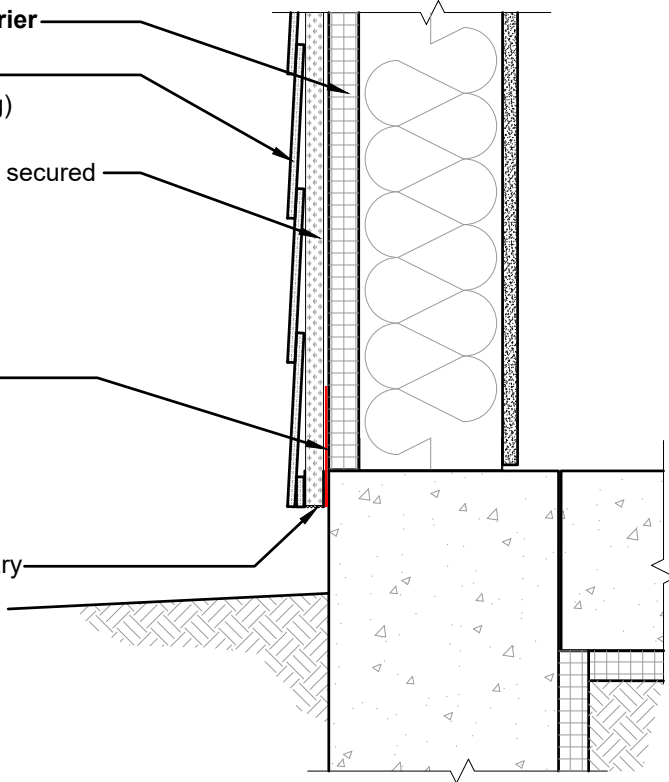
**ECOMAXci® FR Air Barrier**

Fiber cement siding  
(lap siding or panel siding)

Air gap - furring (beyond) secured  
to studs

**Rmax R-SEAL 6000**

Insect screen as necessary



**NOTE: For typical attachment details at  
furring - refer to drawing EM-U-01-FC-13**

These details are intended to supplement the *ECOMAXci® Wall Solution Installation Instructions* located at [www.Rmax.com](http://www.Rmax.com); which should be consulted for additional guidance and installation requirements. Where discrepancies occur, the installation instructions supersede these details. at [www.Rmax.com](http://www.Rmax.com)



**Rmax**

13524 Welch Road  
Dallas, TX 75244  
Phone: (972)-850-3604  
Email: [Technical@Rmax.com](mailto:Technical@Rmax.com)

DRAWING NAME:

FIBER CEMENT CLADDING - Adhered Flashing Tape  
Wall at Foundation and Floor Slab  
ECOMAXci® WALL SOLUTION AS WRB & AB

SCALE:  
NOT TO SCALE

REV. DATE:  
04-17-2020

FILE NO.:  
U-01-5FC-12

DRW. NO.:  
EM-U-01-FC-12

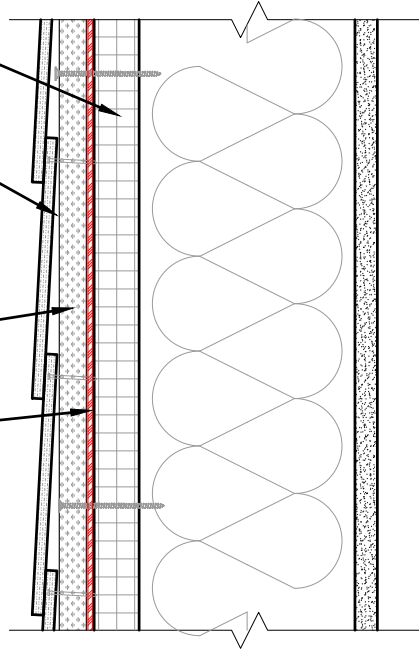
As a manufacturer of construction materials, Rmax provides general details as a general guide for informational purposes only. These details are not intended to replace sound engineering and architectural practices and should not be relied upon for that purpose. Rmax assumes no liability with respect to the design of the system. The architect, consultant and/or engineer or design professional for a particular project bears the sole responsibility for the design of the system, for the preparation and approval of the project specifications, details and shop drawings, and for determining their suitability for a particular project or application. **Rmax makes no warranty of any kind, either expressed or implied, as to the content of this guide detail. Rmax shall not be responsible under any legal theory to any third party for any direct or consequential damages of any kind arising from the use of this guide detail. All products and services provided by Rmax are subject to its terms and conditions of sale available at [www.Rmax.com](http://www.Rmax.com).**

ECOMAXci® FR Air Barrier

Fiber-cement siding secured to furring (lap siding or panel siding)

Furring secured to studs

Butyl flashing or Rmax R-SEAL 6000



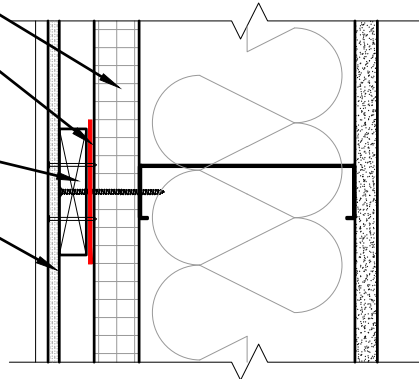
WALL SECTION DETAIL - FURRING BEYOND  
Vertical Section

ECOMAXci® FR Air Barrier

Butyl flashing or Rmax R-SEAL 6000

Furring secured to studs

Fiber-cement siding secured to furring (lap siding or panel siding)



PLAN DETAIL - THROUGH FURRING  
Horizontal Section

These details are intended to supplement the *ECOMAXci® Wall Solution Installation Instructions* located at [www.Rmax.com](http://www.Rmax.com); which should be consulted for additional guidance and installation requirements. Where discrepancies occur, the installation instructions supersede these details. at [www.Rmax.com](http://www.Rmax.com)



**Rmax**

13524 Welch Road  
Dallas, TX 75244  
Phone: (972)-850-3604  
Email: [Technical@Rmax.com](mailto:Technical@Rmax.com)

DRAWING NAME:

FIBER-CEMENT CLADDING - Adhered Flashing Tape  
Attachment Details at Furring

ECOMAXci® WALL SOLUTION AS WRB & AB

SCALE:

NOT TO SCALE

REV. DATE:

04-17-2020

FILE NO.:

U-01-5FC-13

DRW. NO.:

EM-U-01-FC-13

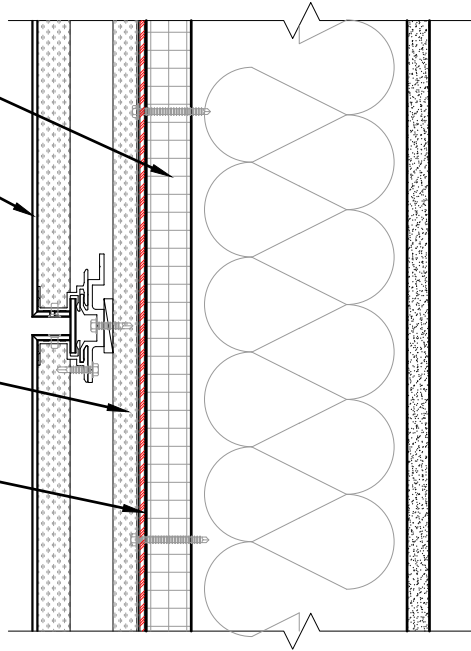
As a manufacturer of construction materials, Rmax provides general details as a general guide for informational purposes only. These details are not intended to replace sound engineering and architectural practices and should not be relied upon for that purpose. Rmax assumes no liability with respect to the design of the system. The architect, consultant and/or engineer or design professional for a particular project bears the sole responsibility for the design of the system, for the preparation and approval of the project specifications, details and shop drawings, and for determining their suitability for a particular project or application. **Rmax makes no warranty of any kind, either expressed or implied, as to the content of this guide detail. Rmax shall not be responsible under any legal theory to any third party for any direct or consequential damages of any kind arising from the use of this guide detail. All products and services provided by Rmax are subject to its terms and conditions of sale available at [www.Rmax.com](http://www.Rmax.com).**

ECOMAXci® FR Air Barrier

MCM cladding panels and mounting system

Z-Furring (vertical) secured to studs

Butyl Flashing or Rmax R-SEAL 6000



WALL SECTION DETAIL - NEAR Z-FURRING

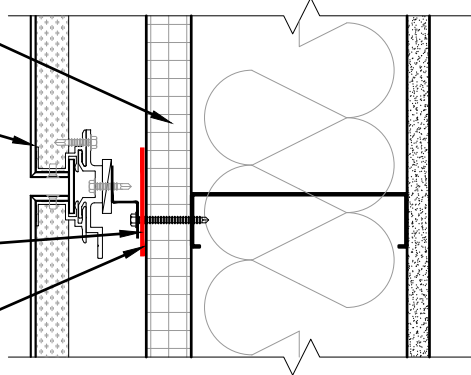
Vertical Section

ECOMAXci® FR Air Barrier

MCM cladding panels and mounting system

Z-Furring (vertical) secured to studs

Butyl flashing or Rmax R-SEAL 6000



PLAN DETAIL - THROUGH Z-FURRING SECURED TO STUD

Horizontal Section

These details are intended to supplement the *ECOMAXci® Wall Solution Installation Instructions* located at [www.Rmax.com](http://www.Rmax.com); which should be consulted for additional guidance and installation requirements. Where discrepancies occur, the installation instructions supersede these details. at [www.Rmax.com](http://www.Rmax.com)



**Rmax**

13524 Welch Road  
Dallas, TX 75244  
Phone: (972)-850-3604  
Email: [Technical@Rmax.com](mailto:Technical@Rmax.com)

DRAWING NAME:

METAL PANEL CLADDING - MCM Panel - Adhered Flashing Tape  
Attachment - Z-Furring (Vertical)

ECOMAXci® WALL SOLUTION AS WRB & AB

SCALE:

NOT TO SCALE

REV. DATE:

04-17-2020

FILE NO.:

U-01-6MP-11

DRW. NO.:

EM-U-01-MP-11

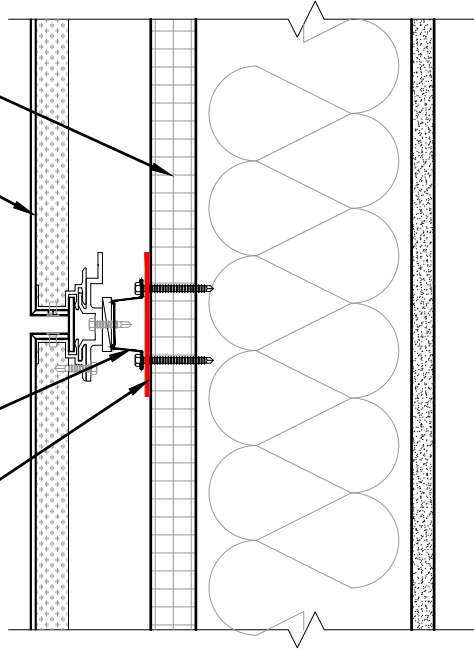
As a manufacturer of construction materials, Rmax provides general details as a general guide for informational purposes only. These details are not intended to replace sound engineering and architectural practices and should not be relied upon for that purpose. Rmax assumes no liability with respect to the design of the system. The architect, consultant and/or engineer or design professional for a particular project bears the sole responsibility for the design of the system, for the preparation and approval of the project specifications, details and shop drawings, and for determining their suitability for a particular project or application. **Rmax makes no warranty of any kind, either expressed or implied, as to the content of this guide detail. Rmax shall not be responsible under any legal theory to any third party for any direct or consequential damages of any kind arising from the use of this guide detail.** All products and services provided by Rmax are subject to its terms and conditions of sale available at [www.Rmax.com](http://www.Rmax.com).

ECOMAXci® FR Air Barrier

MCM cladding panels and mounting system

Hat channel (horizontal) secured to studs

Butyl Flashing or Rmax R-SEAL 6000



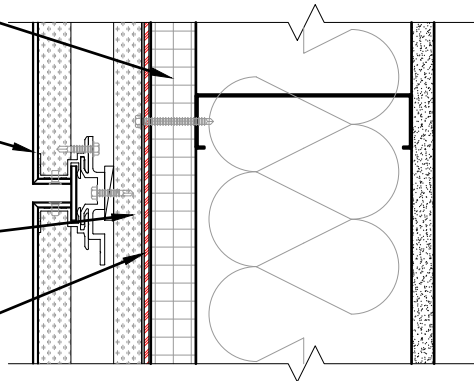
WALL SECTION DETAIL - THROUGH HAT CHANNEL SECURED TO STUD  
Vertical Section

ECOMAXci® FR Air Barrier

MCM cladding panels and mounting system

Hat channel (horizontal) secured to studs

Butyl flashing or Rmax R-SEAL 6000



PLAN DETAIL - THROUGH STUD WITH HAT CHANNEL BEYOND  
Horizontal Section

These details are intended to supplement the *ECOMAXci® Wall Solution Installation Instructions* located at [www.Rmax.com](http://www.Rmax.com); which should be consulted for additional guidance and installation requirements. Where discrepancies occur, the installation instructions supersede these details. at [www.Rmax.com](http://www.Rmax.com)



**Rmax**

13524 Welch Road  
Dallas, TX 75244  
Phone: (972)-850-3604  
Email: [Technical@Rmax.com](mailto:Technical@Rmax.com)

DRAWING NAME:

METAL PANEL CLADDING - MCM Panel - Adhered Flashing Tape Attachment - Hat Channels (Horizontal)

ECOMAXci® WALL SOLUTION AS WRB & AB

SCALE:

NOT TO SCALE

REV. DATE:

04-17-2020

FILE NO.:

U-01-6MP-12

DRW. NO.:

EM-U-01-MP-12

As a manufacturer of construction materials, Rmax provides general details as a general guide for informational purposes only. These details are not intended to replace sound engineering and architectural practices and should not be relied upon for that purpose. Rmax assumes no liability with respect to the design of the system. The architect, consultant and/or engineer or design professional for a particular project bears the sole responsibility for the design of the system, for the preparation and approval of the project specifications, details and shop drawings, and for determining their suitability for a particular project or application. **Rmax makes no warranty of any kind, either expressed or implied, as to the content of this guide detail. Rmax shall not be responsible under any legal theory to any third party for any direct or consequential damages of any kind arising from the use of this guide detail. All products and services provided by Rmax are subject to its terms and conditions of sale available at [www.Rmax.com](http://www.Rmax.com).**

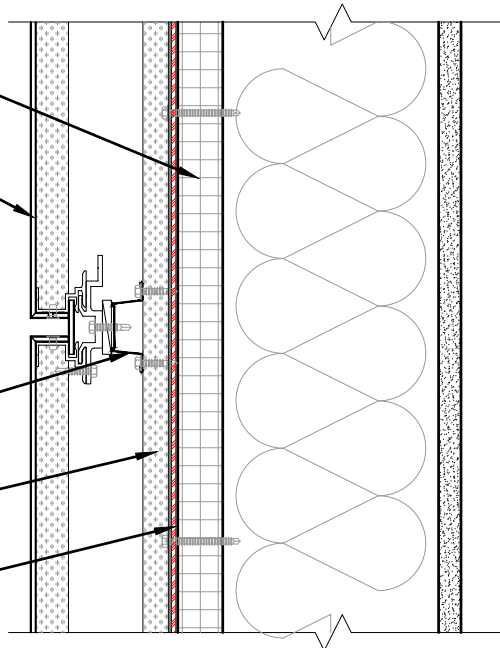
ECOMAXci® FR Air Barrier

MCM cladding panels and mounting system

Hat channel (horizontal) secured to Z-Furring

Z-Furring (vertical) secured to studs

Butyl flashing or Rmax R-SEAL 6000



WALL SECTION DETAIL - THROUGH HORIZONTAL HAT CHANNEL WITH Z-FURRING BEYOND

Vertical Section

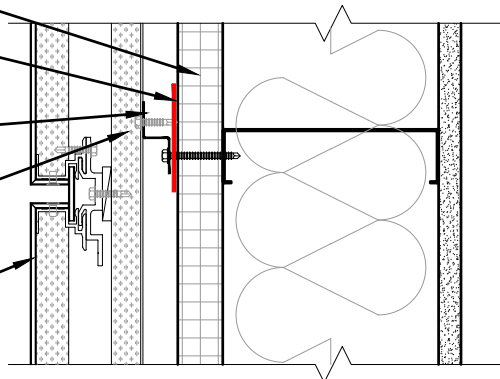
ECOMAXci® FR Air Barrier

Butyl flashing or Rmax R-SEAL 6000

Z-Furring (vertical) secured to studs

Hat channel (horizontal) secured to Z-Furring

MCM Cladding panels and mounting system



PLAN DETAIL - THROUGH Z-FURRING SECURED TO STUD WITH HAT CHANNEL BEYOND

Horizontal Section

These details are intended to supplement the *ECOMAXci® Wall Solution Installation Instructions* located at [www.Rmax.com](http://www.Rmax.com); which should be consulted for additional guidance and installation requirements. Where discrepancies occur, the installation instructions supersede these details. at [www.Rmax.com](http://www.Rmax.com)



**Rmax**

13524 Welch Road  
Dallas, TX 75244  
Phone: (972)-850-3604  
Email: [Technical@Rmax.com](mailto:Technical@Rmax.com)

DRAWING NAME:

METAL PANEL CLADDING - MCM Panel - Adhered Flashing Tape Attachment - Z-Furring (Vertical) and Hat Channels (Horizontal)

ECOMAXci® WALL SOLUTION AS WRB & AB

SCALE:  
NOT TO SCALE

REV. DATE:  
04-17-2020

FILE NO.:  
U-01-6MP-13

DRW. NO.:  
EM-U-01-MP-13

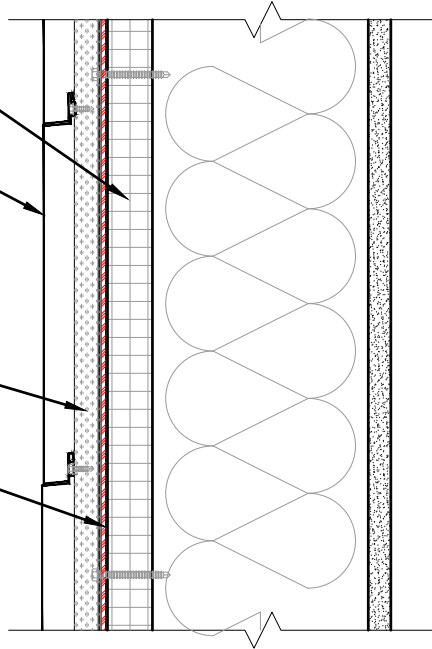
As a manufacturer of construction materials, Rmax provides general details as a general guide for informational purposes only. These details are not intended to replace sound engineering and architectural practices and should not be relied upon for that purpose. Rmax assumes no liability with respect to the design of the system. The architect, consultant and/or engineer or design professional for a particular project bears the sole responsibility for the design of the system, for the preparation and approval of the project specifications, details and shop drawings, and for determining their suitability for a particular project or application. Rmax makes no warranty of any kind, either expressed or implied, as to the content of this guide detail. Rmax shall not be responsible under any legal theory to any third party for any direct or consequential damages of any kind arising from the use of this guide detail. All products and services provided by Rmax are subject to its terms and conditions of sale available at [www.Rmax.com](http://www.Rmax.com).

**ECOMAXci® FR Air Barrier**

Horizontally installed formed  
metal panel cladding system  
(concealed fasteners)

Z-Furring (vertical) secured  
to studs

Butyl flashing or  
**Rmax R-SEAL 6000**



### WALL SECTION DETAIL - NEAR Z-FURRING

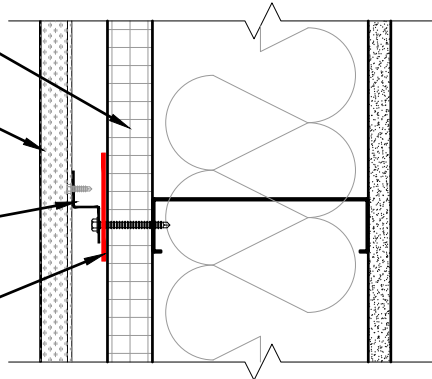
Vertical Section

**ECOMAXci® FR Air Barrier**

Horizontally installed formed  
metal panel cladding system  
(concealed fasteners)

Z-Furring (vertical) secured  
to studs

Butyl flashing or  
**Rmax R-SEAL 6000**



### PLAN DETAIL - THROUGH Z-FURRING SECURED TO STUD

Horizontal Section

These details are intended to supplement the *ECOMAXci® Wall Solution Installation Instructions* located at [www.Rmax.com](http://www.Rmax.com); which should be consulted for additional guidance and installation requirements. Where discrepancies occur, the installation instructions supersede these details. at [www.Rmax.com](http://www.Rmax.com)



**Rmax**

13524 Welch Road  
Dallas, TX 75244  
Phone: (972)-850-3604  
Email: [Technical@Rmax.com](mailto:Technical@Rmax.com)

DRAWING NAME:  
METAL PANEL CLADDING - Formed Style Metal Panel - Adhered Flashing Tape  
Attachment - Z-Furring (Vertical)  
**ECOMAXci® WALL SOLUTION AS WRB & AB**

SCALE:  
**NOT TO SCALE**

REV. DATE:  
**04-17-2020**

FILE NO.:  
**U-01-6MP-21**

DRW. NO.:  
**EM-U-01-MP-21**

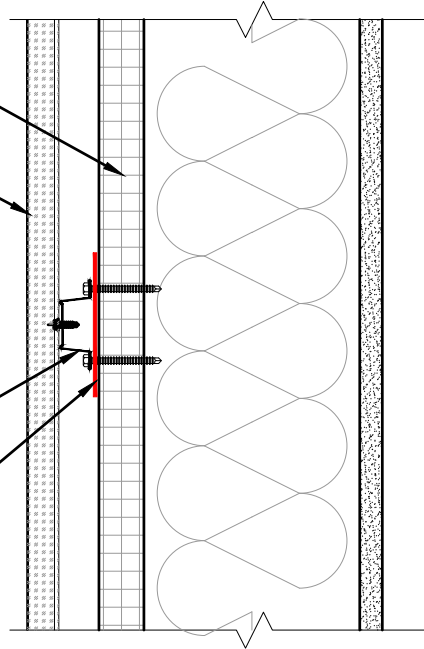
As a manufacturer of construction materials, Rmax provides general details as a general guide for informational purposes only. These details are not intended to replace sound engineering and architectural practices and should not be relied upon for that purpose. Rmax assumes no liability with respect to the design of the system. The architect, consultant and/or engineer or design professional for a particular project bears the sole responsibility for the design of the system, for the preparation and approval of the project specifications, details and shop drawings, and for determining their suitability for a particular project or application. **Rmax makes no warranty of any kind, either expressed or implied, as to the content of this guide detail. Rmax shall not be responsible under any legal theory to any third party for any direct or consequential damages of any kind arising from the use of this guide detail. All products and services provided by Rmax are subject to its terms and conditions of sale available at [www.Rmax.com](http://www.Rmax.com).**

ECOMAXci® FR Air Barrier

Vertically installed formed metal panel cladding system (concealed fasteners)

Hat channel (horizontal) secured to studs

Butyl flashing or Rmax R-SEAL 6000



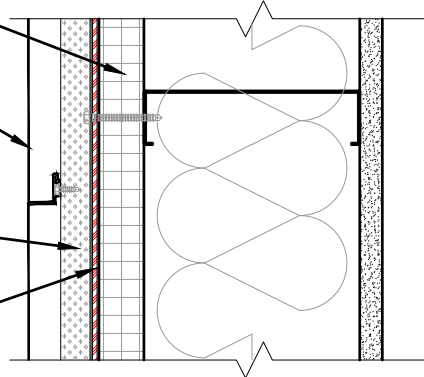
WALL SECTION DETAIL - THROUGH HAT CHANNEL SECURED TO STUD  
Vertical Section

ECOMAXci® FR Air Barrier

Vertically installed formed metal panel cladding system (concealed fasteners)

Hat channel (horizontal) secured to studs

Butyl flashing or Rmax R-SEAL 6000



PLAN DETAIL - THROUGH STUD WITH HAT CHANNEL BEYOND  
Horizontal Section

These details are intended to supplement the *ECOMAXci® Wall Solution Installation Instructions* located at [www.Rmax.com](http://www.Rmax.com); which should be consulted for additional guidance and installation requirements. Where discrepancies occur, the installation instructions supersede these details. at [www.Rmax.com](http://www.Rmax.com)



**Rmax**

13524 Welch Road  
Dallas, TX 75244  
Phone: (972)-850-3604  
Email: [Technical@Rmax.com](mailto:Technical@Rmax.com)

DRAWING NAME:  
METAL PANEL CLADDING - Formed Style Metal Panel - Adhered Flashing Tape  
Attachment - Hat Channels (Horizontal)  
ECOMAXci® WALL SOLUTION AS WRB & AB

SCALE:  
NOT TO SCALE

REV. DATE:  
04-17-2020

FILE NO.:  
U-01-6MP-22

DRW. NO.:  
EM-U-01-MP-22

As a manufacturer of construction materials, Rmax provides general details as a general guide for informational purposes only. These details are not intended to replace sound engineering and architectural practices and should not be relied upon for that purpose. Rmax assumes no liability with respect to the design of the system. The architect, consultant and/or engineer or design professional for a particular project bears the sole responsibility for the design of the system, for the preparation and approval of the project specifications, details and shop drawings, and for determining their suitability for a particular project or application. **Rmax makes no warranty of any kind, either expressed or implied, as to the content of this guide detail. Rmax shall not be responsible under any legal theory to any third party for any direct or consequential damages of any kind arising from the use of this guide detail. All products and services provided by Rmax are subject to its terms and conditions of sale available at [www.Rmax.com](http://www.Rmax.com).**



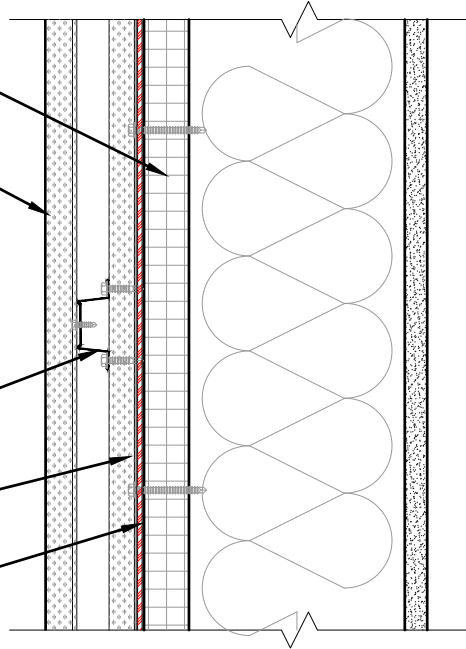
ECOMAXci® FR Air Barrier

Vertically installed formed metal panel cladding system (concealed fasteners)

Hat channel (horizontal) secured to Z-Furring

Z-Furring (vertical) secured to studs

Butyl flashing or Rmax R-SEAL 6000



WALL SECTION DETAIL - THROUGH HORIZONTAL HAT CHANNEL WITH Z-FURRING BEYOND  
Vertical Section

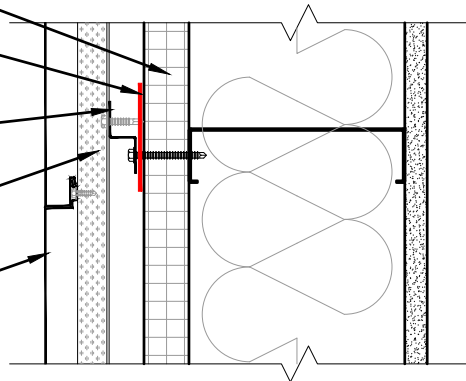
ECOMAXci® FR Air Barrier

Butyl flashing or Rmax R-SEAL 6000

Z-Furring (vertical) secured to studs

Hat channel (horizontal) secured to Z-Furring

Vertically installed formed metal panel cladding system (concealed fasteners)



PLAN DETAIL - THROUGH Z-FURRING SECURED TO STUD WITH HAT CHANNEL BEYOND  
Horizontal Section

These details are intended to supplement the *ECOMAXci® Wall Solution Installation Instructions* located at [www.Rmax.com](http://www.Rmax.com); which should be consulted for additional guidance and installation requirements. Where discrepancies occur, the installation instructions supersede these details. at [www.Rmax.com](http://www.Rmax.com)



**Rmax**

13524 Welch Road  
Dallas, TX 75244  
Phone: (972)-850-3604  
Email: [Technical@Rmax.com](mailto:Technical@Rmax.com)

DRAWING NAME:

METAL PANEL CLADDING - Formed Style Metal Panel - Adhered Flashing Tape Attachment - Z-Furring (Vertical) and Hat Channels (Horizontal)

ECOMAXci® WALL SOLUTION AS WRB & AB

SCALE:

NOT TO SCALE

REV. DATE:

04-17-2020

FILE NO.:

U-01-6MP-23

DRW. NO.:

EM-U-01-MP-23

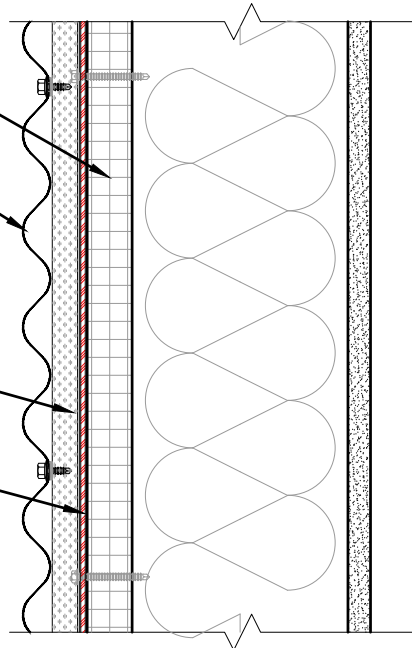
As a manufacturer of construction materials, Rmax provides general details as a general guide for informational purposes only. These details are not intended to replace sound engineering and architectural practices and should not be relied upon for that purpose. Rmax assumes no liability with respect to the design of the system. The architect, consultant and/or engineer or design professional for a particular project bears the sole responsibility for the design of the system, for the preparation and approval of the project specifications, details and shop drawings, and for determining their suitability for a particular project or application. **Rmax makes no warranty of any kind, either expressed or implied, as to the content of this guide detail. Rmax shall not be responsible under any legal theory to any third party for any direct or consequential damages of any kind arising from the use of this guide detail. All products and services provided by Rmax are subject to its terms and conditions of sale available at [www.Rmax.com](http://www.Rmax.com).**

ECOMAXci® FR Air Barrier

Horizontally installed metal panel cladding system (exposed fasteners)

Z-Furring (vertical) secured to studs

Butyl flashing or Rmax R-SEAL 6000



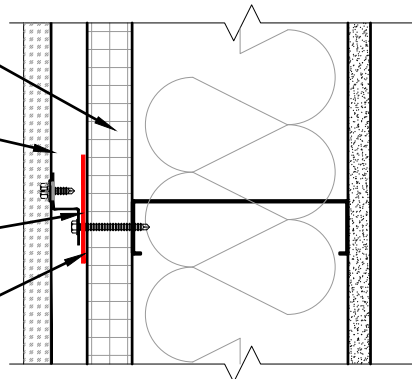
WALL SECTION DETAIL - NEAR Z-FURRING

ECOMAXci® FR Air Barrier

Horizontally installed metal panel cladding system (concealed fasteners)

Z-Furring (vertical) secured to studs

Butyl flashing or Rmax R-SEAL 6000



PLAN DETAIL - THROUGH Z-FURRING SECURED TO STUD

These details are intended to supplement the *ECOMAXci® Wall Solution Installation Instructions* located at [www.Rmax.com](http://www.Rmax.com); which should be consulted for additional guidance and installation requirements. Where discrepancies occur, the installation instructions supersede these details. at [www.Rmax.com](http://www.Rmax.com)



**Rmax**

13524 Welch Road  
Dallas, TX 75244  
Phone: (972)-850-3604  
Email: [Technical@Rmax.com](mailto:Technical@Rmax.com)

DRAWING NAME:  
METAL PANEL CLADDING - Profile Style Metal Panel - Adhered Flashing Tape  
Attachment - Z-Furring (Vertical)  
ECOMAXci® WALL SOLUTION AS WRB & AB

SCALE:  
NOT TO SCALE

REV. DATE:  
04-17-2020

FILE NO.:  
U-01-6MP-26

DRW. NO.:  
EM-U-01-MP-26

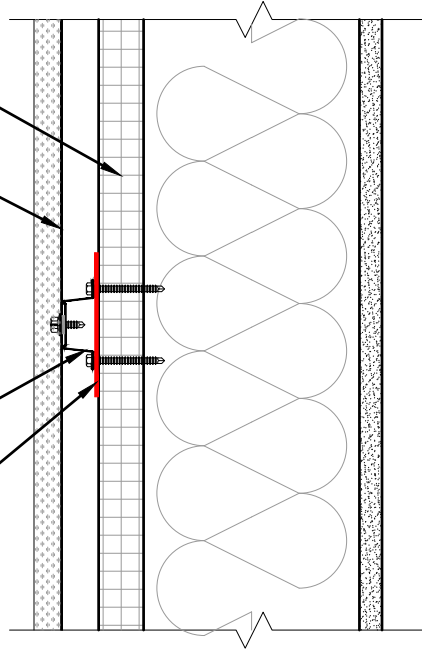
As a manufacturer of construction materials, Rmax provides general details as a general guide for informational purposes only. These details are not intended to replace sound engineering and architectural practices and should not be relied upon for that purpose. Rmax assumes no liability with respect to the design of the system. The architect, consultant and/or engineer or design professional for a particular project bears the sole responsibility for the design of the system, for the preparation and approval of the project specifications, details and shop drawings, and for determining their suitability for a particular project or application. **Rmax makes no warranty of any kind, either expressed or implied, as to the content of this guide detail. Rmax shall not be responsible under any legal theory to any third party for any direct or consequential damages of any kind arising from the use of this guide detail. All products and services provided by Rmax are subject to its terms and conditions of sale available at [www.Rmax.com](http://www.Rmax.com).**

ECOMAXci® FR Air Barrier

Vertically installed metal panel cladding system (exposed fasteners)

Hat channel (horizontal) secured to studs

Butyl flashing or Rmax R-SEAL 6000



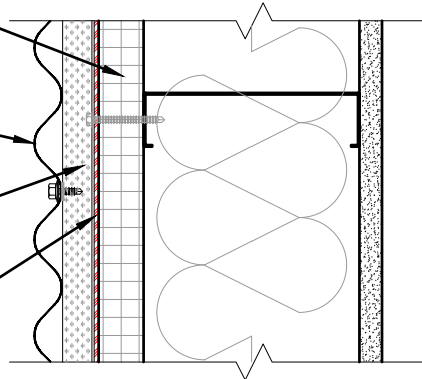
WALL SECTION DETAIL - THROUGH HAT CHANNEL SECURED TO STUD  
Vertical Section

ECOMAXci® FR Air Barrier

Vertically installed metal panel cladding system (exposed fasteners)

Hat channel (horizontal) secured to studs

Butyl flashing or Rmax R-SEAL 6000



PLAN DETAIL - THROUGH STUD WITH HAT CHANNEL BEYOND  
Horizontal Section

These details are intended to supplement the *ECOMAXci® Wall Solution Installation Instructions* located at [www.Rmax.com](http://www.Rmax.com); which should be consulted for additional guidance and installation requirements. Where discrepancies occur, the installation instructions supersede these details. at [www.Rmax.com](http://www.Rmax.com)



**Rmax**

13524 Welch Road  
Dallas, TX 75244  
Phone: (972)-850-3604  
Email: [Technical@Rmax.com](mailto:Technical@Rmax.com)

DRAWING NAME:  
METAL PANEL CLADDING - Profile Style Metal Panel - Adhered Flashing Tape  
Attachment - Hat Channels (Horizontal)  
ECOMAXci® WALL SOLUTION AS WRB & AB

SCALE:  
NOT TO SCALE

REV. DATE:  
04-17-2020

FILE NO.:  
U-01-6MP-27

DRW. NO.:  
EM-U-01-MP-27

As a manufacturer of construction materials, Rmax provides general details as a general guide for informational purposes only. These details are not intended to replace sound engineering and architectural practices and should not be relied upon for that purpose. Rmax assumes no liability with respect to the design of the system. The architect, consultant and/or engineer or design professional for a particular project bears the sole responsibility for the design of the system, for the preparation and approval of the project specifications, details and shop drawings, and for determining their suitability for a particular project or application. **Rmax makes no warranty of any kind, either expressed or implied, as to the content of this guide detail. Rmax shall not be responsible under any legal theory to any third party for any direct or consequential damages of any kind arising from the use of this guide detail. All products and services provided by Rmax are subject to its terms and conditions of sale available at [www.Rmax.com](http://www.Rmax.com).**

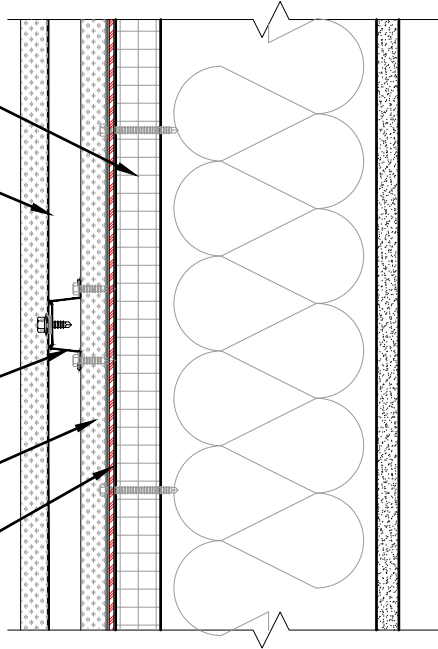
ECOMAXci® FR Air Barrier

Vertically installed metal panel cladding system (exposed fasteners)

Hat channel (horizontal) secured to Z-Furring

Z-Furring (vertical) secured to studs

Butyl flashing or Rmax R-SEAL 6000



WALL SECTION DETAIL - THROUGH HORIZONTAL HAT CHANNEL WITH Z-FURRING BEYOND  
Vertical Section

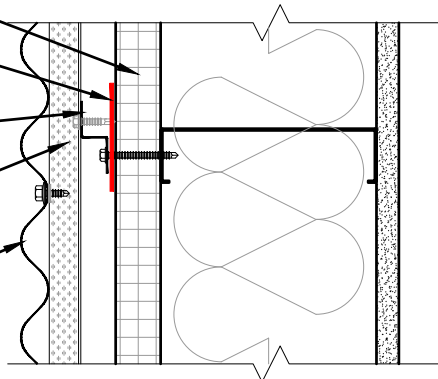
ECOMAXci® FR Air Barrier

Butyl flashing or Rmax R-SEAL 6000

Z-Furring (vertical) secured to studs

Hat channel (horizontal) secured to Z-Furring

Vertically installed metal panel cladding system (exposed fasteners)



PLAN DETAIL - THROUGH Z-FURRING SECURED TO STUD WITH HAT CHANNEL BEYOND  
Horizontal Section

These details are intended to supplement the *ECOMAXci® Wall Solution Installation Instructions* located at [www.Rmax.com](http://www.Rmax.com); which should be consulted for additional guidance and installation requirements. Where discrepancies occur, the installation instructions supersede these details. at [www.Rmax.com](http://www.Rmax.com)



**Rmax**

13524 Welch Road  
Dallas, TX 75244  
Phone: (972)-850-3604  
Email: [Technical@Rmax.com](mailto:Technical@Rmax.com)

DRAWING NAME:  
METAL PANEL CLADDING - Profile Style Metal Panel - Adhered Flashing Tape Attachment - Z-Furring (Vertical) and Hat Channels (Horizontal)  
ECOMAXci® WALL SOLUTION AS WRB & AB

SCALE:  
NOT TO SCALE

REV. DATE:  
04-17-2020

FILE NO.:  
U-01-6MP-28

DRW. NO.:  
EM-U-01-MP-28

As a manufacturer of construction materials, Rmax provides general details as a general guide for informational purposes only. These details are not intended to replace sound engineering and architectural practices and should not be relied upon for that purpose. Rmax assumes no liability with respect to the design of the system. The architect, consultant and/or engineer or design professional for a particular project bears the sole responsibility for the design of the system, for the preparation and approval of the project specifications, details and shop drawings, and for determining their suitability for a particular project or application. **Rmax makes no warranty of any kind, either expressed or implied, as to the content of this guide detail. Rmax shall not be responsible under any legal theory to any third party for any direct or consequential damages of any kind arising from the use of this guide detail. All products and services provided by Rmax are subject to its terms and conditions of sale available at [www.Rmax.com](http://www.Rmax.com).**