

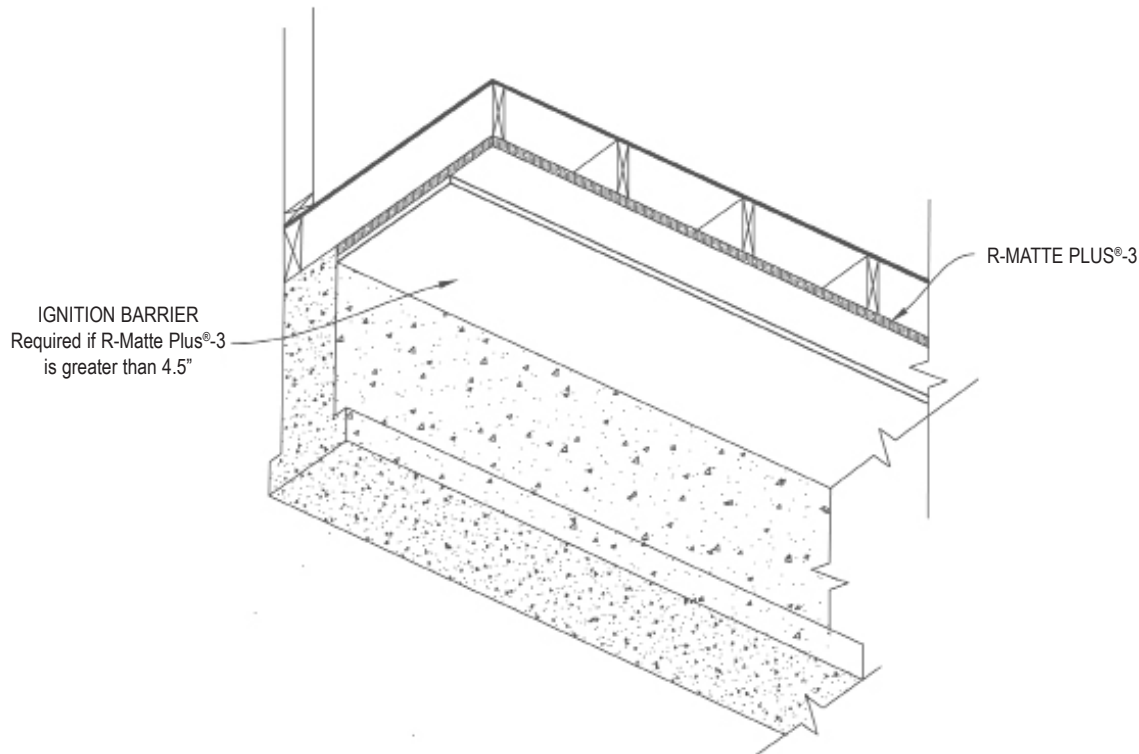
R-Matte® Plus-3: Insulation for the Building Envelope

Attic and Crawl Space Applications

R-Matte® Plus-3 may be applied to the interior face of stud walls or roof rafters within attics and crawl spaces to provide a layer of continuous insulation (ci). Simply nail the R-Matte® Plus-3 to the framing members and cover with an approved ignition barrier such as 3/8" gypsum wallboard or 1/4" wood structural panel, particle board or hardboard, as required.

R-Matte® Plus-3 has been tested to be left exposed in attics and crawl spaces without the code prescribed ignition barrier, provided the space is limited to servicing utilities. The maximum thickness is 1" in walls and ceilings or up to 4.5" in walls only.

Refer to R-Matte® Plus-3 data sheet for additional application/installation, compliances, thermal and physical properties, limitations and warnings.



Notes:

1. Refer to local building codes for requirements on proper ventilation and bracing.
2. Either the white matte or reflective surface can be facing out. Additional thermal value achieved if reflective surface faces an existing air space.

*Warranty: See Rmax "Sales Policy" and applicable warranties for terms and conditions. Rmax does not assume any responsibility or liability for the performance of any products other than those manufactured by Rmax. **NOTE: All Rmax products must be tarped, placed on skids and kept dry before and throughout construction.***