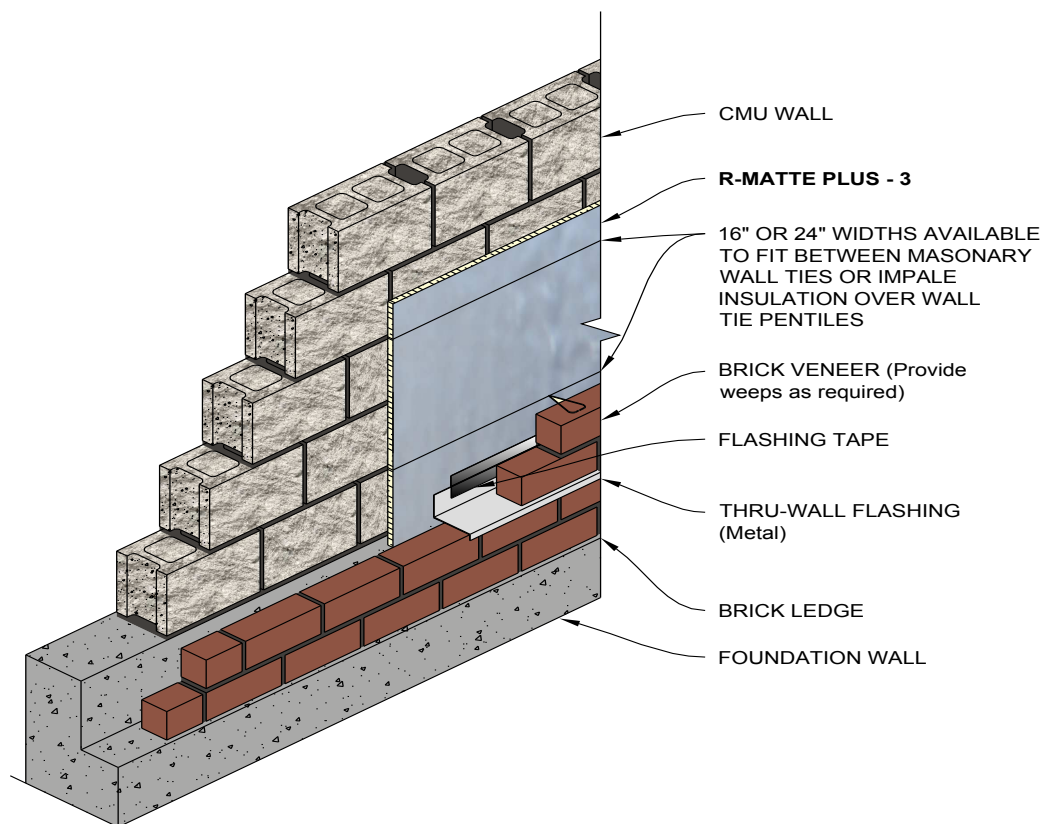


R-Matte® Plus-3: Insulation for the Building Envelope

Cavity Wall (Brick Veneer) Application

R-Matte® Plus-3 is an excellent cavity insulation product fitting between the masonry block and finished brick veneer of any residential or commercial project. It may be secured to the dry face of the masonry block wall with a quality grade construction adhesive. R-Matte® Plus-3 can be cut to fit between masonry joint reinforcements placed to tie the brick veneer to the concrete block back-up and installed horizontally in strips to allow the wall ties to extend beyond the face of the insulation leaving the proper air spaces as required.

Refer to R-Matte® Plus-3 data sheet for additional application/installation, compliances, thermal and physical properties, limitations and warnings.



Notes:

1. Either the white matte or reflective surface can be facing out. Additional thermal value achieved if reflective surface faces an existing air space.

*Warranty: See Rmax "Sales Policy" and applicable warranties for terms and conditions. Rmax does not assume any responsibility or liability for the performance of any products other than those manufactured by Rmax. **NOTE: All Rmax products must be tarped, placed on skids and kept dry before and throughout construction.***