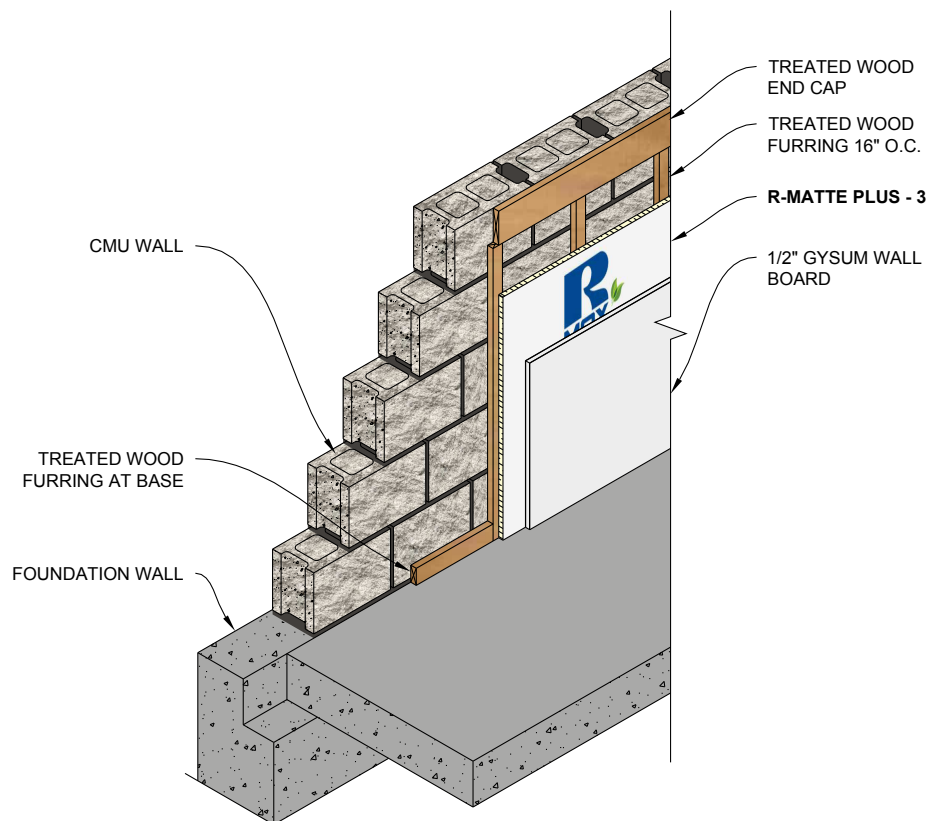


# R-Matte® Plus-3: Insulation for the Building Envelope

## Masonry Wall Application

R-Matte® Plus-3 is applied to the interior face of concrete or concrete masonry walls to provide a layer of continuous insulation (ci) over the entire surface. It may be secured over or under furring strips, followed by a minimum 1/2" gypsum wallboard interior finish. Adhesive, fasteners, screws or nails may be used to hold the R-Matte® Plus-3 in place temporarily until the furring strips and/or gypsum wallboard are mechanically fastened through the insulation back to the concrete substrate and/or furring strips.

Refer to R-Matte® Plus-3 data sheet for additional application/installation, compliances, thermal and physical properties, limitations and warnings.



Notes:

1. Either the white matte or reflective surface can be facing out. Additional thermal value achieved if reflective surface faces an existing air space.

*Warranty: See Rmax "Sales Policy" and applicable warranties for terms and conditions. Rmax does not assume any responsibility or liability for the performance of any products other than those manufactured by Rmax. **NOTE: All Rmax products must be tarped, placed on skids and kept dry before and throughout construction.***