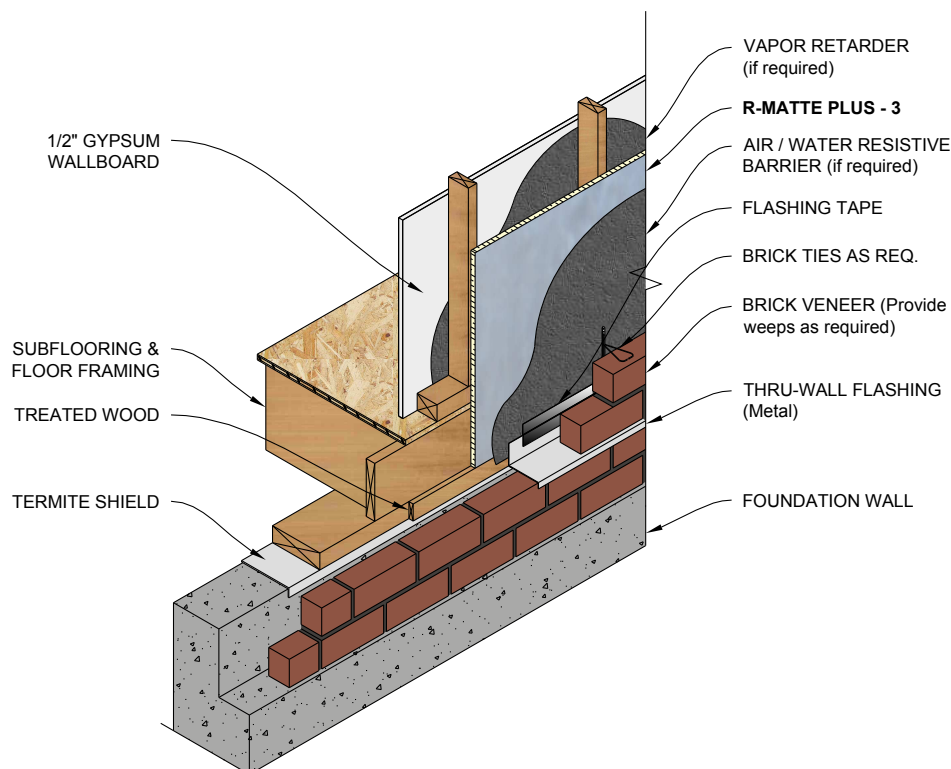


# R-Matte® Plus-3: Insulation for the Building Envelope

## Stud Wall Application

R-Matte® Plus-3 applied to the exterior or interior face of studs, to cover all studs, sills, plates and header constructions, provides a layer of continuous insulation (ci) over details not normally covered by insulation products. It may be secured to the framing or structural sheathing with bugle-head screws, galvanized roofing nails or common nails driven through cap washers. Quality-grade construction adhesives may also be used to secure the R-Matte® Plus-3 on interior applications. Exterior facades may include brick/stone veneer, exterior siding and stucco. R-Matte® Plus-3 must be separated from the interior with a minimum 1/2" gypsum wallboard or equivalent thermal barrier. When insulation extends into the attic or crawl space, R-Matte® Plus-3 has been tested to be left exposed in without the code prescribed ignition barrier, provided the space is limited to servicing utilities. The maximum thickness is 1" in walls and ceilings or up to 4.5" in walls only.

**Refer to R-Matte® Plus-3 data sheet for additional application/installation, compliances, thermal and physical properties, limitations and warnings.**



Notes:

1. Stud walls must be properly braced for lateral loads according to the requirements of local Building Codes.
2. Either the white matte or reflective surface can be facing out. Additional thermal value achieved if reflective surface faces an existing air space.

*Warranty: See Rmax "Sales Policy" and applicable warranties for terms and conditions. Rmax does not assume any responsibility or liability for the performance of any products other than those manufactured by Rmax. **NOTE: All Rmax products must be tarped, placed on skids and kept dry before and throughout construction.***