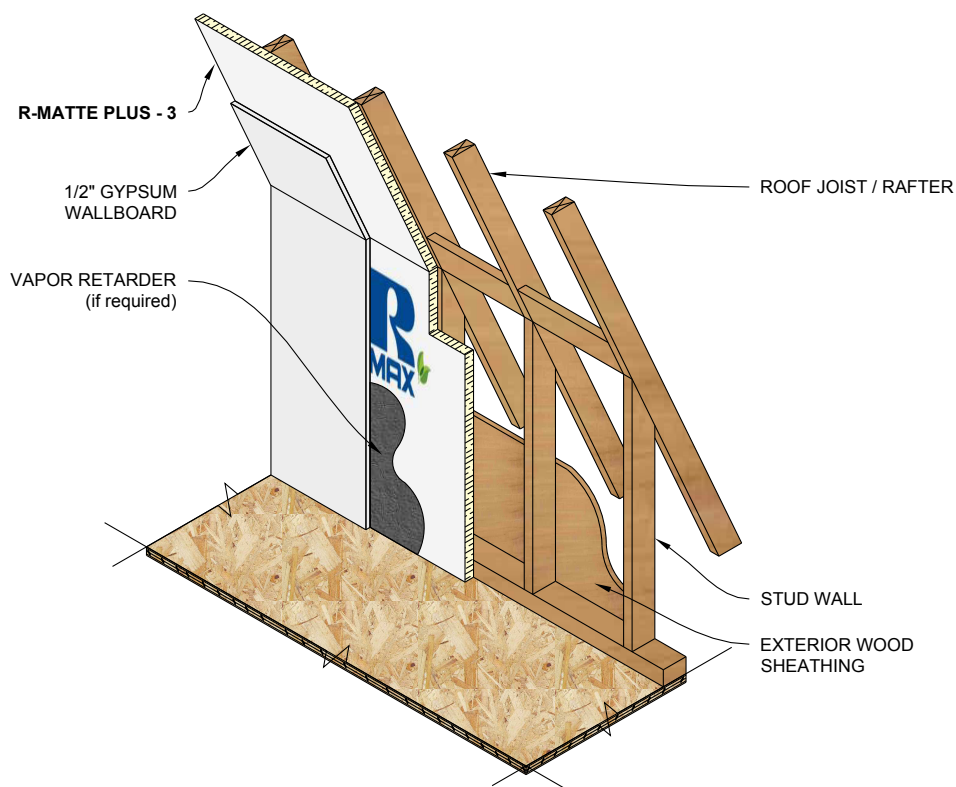


R-Matte® Plus-3: Insulation for the Building Envelope

Vaulted Ceiling Application

R-Matte® Plus-3 may be applied to the inside face of the roof rafters in vaulted ceiling construction to provide a layer of continuous insulation (ci) and increase the R-value of the roof. Simply nail the R-Matte® Plus-3 to the face of the rafter, cover with a minimum 1/2" gypsum wallboard and finish.

Refer to R-Matte® Plus-3 data sheet for additional application/installation, compliances, thermal and physical properties, limitations and warnings.



Notes:

1. Refer to local Building Codes for requirements on proper ventilation.
2. Stud walls must be properly braced for lateral loads according to the requirements of local Building Codes.
3. Either the white matter or reflective surface can be facing out. Additional thermal value achieved if reflective surface faces and existing air space.

*Warranty: See Rmax "Sales Policy" and applicable warranties for terms and conditions. Rmax does not assume any responsibility or liability for the performance of any products other than those manufactured by Rmax. **NOTE: All Rmax products must be tarped, placed on skids and kept dry before and throughout construction.***