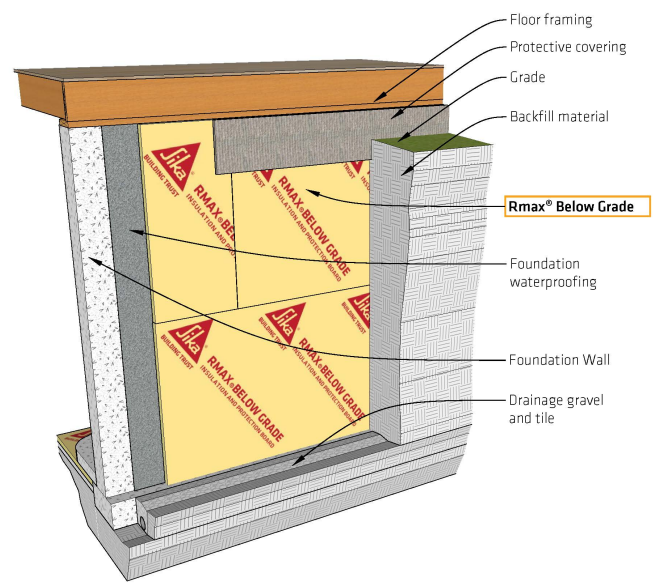
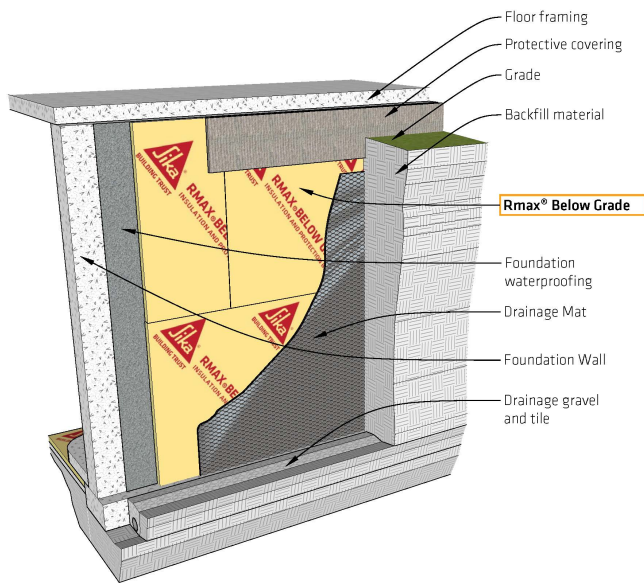


RMAX® BELOW GRADE EXTERIOR WALL APPLICATIONS

Rmax® Below Grade is an excellent choice to insulate the exterior side of below-grade walls. Install Rmax® Below Grade after damp proofing/waterproofing the concrete wall and prior to backfilling. Be sure to repair any leaks or cracks in the wall before installation. Rest the bottom edge of the board on top of the footer and extend up to sill plates. Secure the insulation using a quality grade construction adhesive compatible with both substrates. Board edges must be tightly butted together and fit snug around penetrations. **NOTE: To promote vertical drainage, install a composite drainage material either between the damp proofing/waterproofing and insulation or over the insulation.**

Refer to Rmax® Below Grade Product Data Sheet for additional application/installation, compliances, thermal and physical properties, limitations and warnings.



NOTE:

1. Use of the insulation board in areas where the probability of termite infestation is "very heavy" must be in accordance with Chapter 26 of the IBC.

Warranty: See Rmax® sales policy and limited warranties for terms and conditions. Rmax® does not assume any responsibility or liability for the performance of any products other than those manufactured by Rmax®. **NOTE: Factory packaging should not be relied upon as protection at job sites or other outdoor storage locations. When short-term outdoor storage is necessary, take the following precautions: Store flat above ground on raised pallets, place bundles on finished surfaces, cover with a breathable tarpaulin and secure cover to prevent wind displacement.**