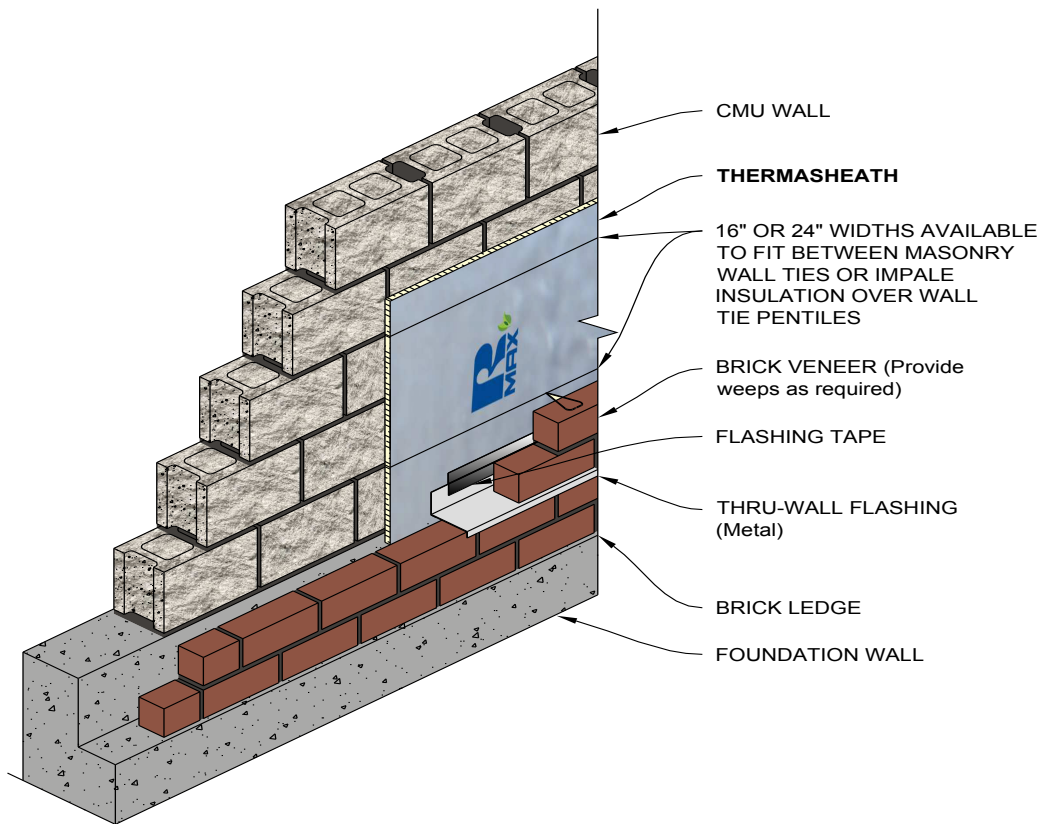


## THERMASHEATH®

### CAVITY WALL (BRICK VENEER) APPLICATION

Rmax Thermasheath® is an excellent cavity insulation product fitting between the masonry block and finished brick veneer of any residential or commercial project. It may be secured to the dry face of the masonry block wall with a quality grade construction adhesive. Thermasheath® can be cut to fit between masonry joint reinforcements placed to tie the brick veneer to the concrete block back-up and installed horizontally in strips to allow the wall ties to extend beyond the face of the insulation leaving the proper air spaces as required.

Refer to Thermasheath® Product Data Sheet for additional application/installation, compliances, thermal and physical properties, limitations and warnings.



Warranty: See Rmax "Sales Policy" and "Fifteen Year Limited Thermal Warranty" for terms and conditions. Rmax does not assume any responsibility or liability for the performance of any products other than those manufactured by Rmax. **NOTE: All Rmax products must be tarped, placed on skids and kept dry before and throughout construction.**



BUILDING TRUST



PRODUCT APPLICATION SHEET  
THERMASHEATH®  
Revision.02-27-2020  
www.rmax.com  
(800) 527-0890