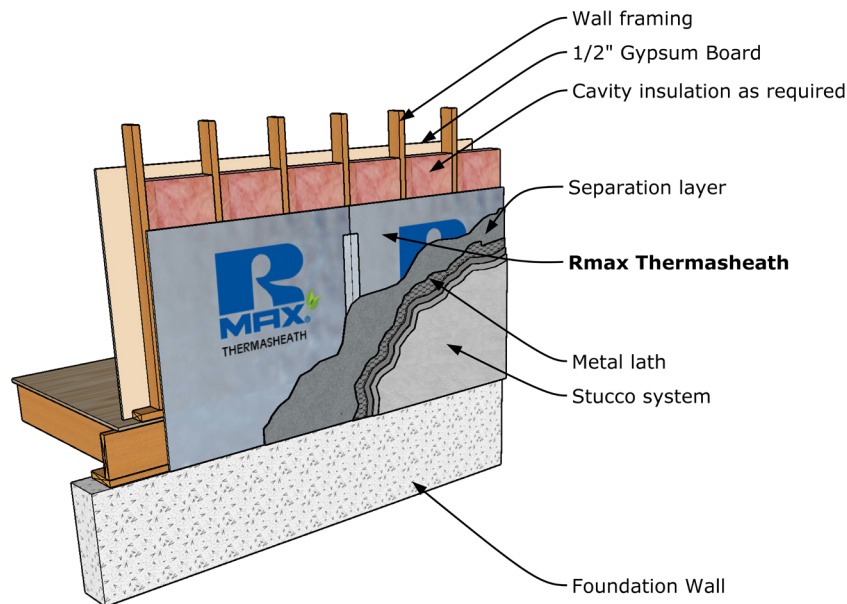


THERMASHEATH® EXTERIOR STUCCO APPLICATION

Rmax Thermasheath® may be used as the insulated sheathing under hard coat stucco finishes. It may be secured to the studs with bugle-head screws, galvanized roofing nails or common-nails driven through cap washers. Cover the Thermasheath® with a suitable separation layer such as an organic or inorganic felt. Then, attach conventional metal wire lath and expansion joints with appropriate fasteners as dictated by the local Building Code. Rmax does not recommend the direct attachment of stucco, such as Portland cement or polymer-modified types, directly to the face of the insulation product. Consult stucco manufacturers for details.

Refer to Thermasheath® Product Data Sheet for additional application/installation, compliances, thermal and physical properties, limitations and warnings.



Notes:

1. Include vapor retarder as required based on climate zone, design and local Building Code.

*Warranty: See Rmax "Sales Policy" and "Fifteen Year Limited Thermal Warranty" for terms and conditions. Rmax does not assume any responsibility or liability for the performance of any products other than those manufactured by Rmax. **NOTE: All Rmax products must be tarped, placed on skids and kept dry before and throughout construction.***



BUILDING TRUST



PRODUCT APPLICATION SHEET
THERMASHEATH®
Revision.02-27-2020
www.rmax.com
(800) 527-0890