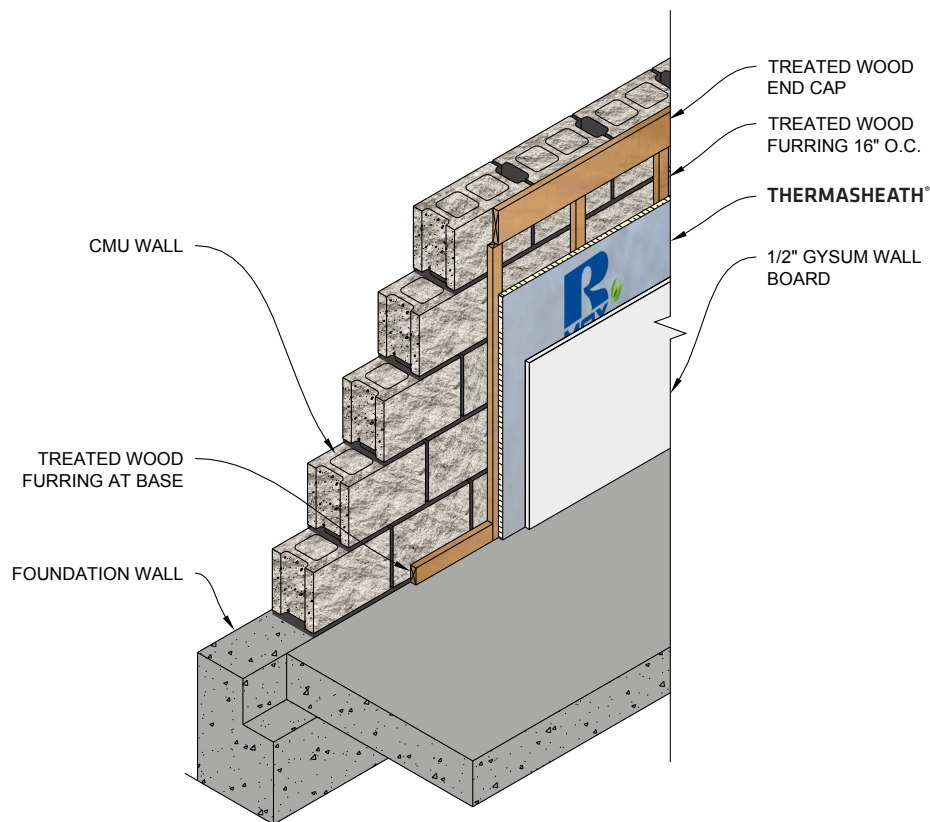


## THERMASHEATH® MASONRY WALL APPLICATION

Rmax Thermasheath® is applied to the interior face of concrete or concrete masonry walls to provide a layer of continuous insulation (ci) over the entire surface. It may be secured over or under furring strips, followed by a minimum 1/2" gypsum wallboard interior finish. Adhesive or fasteners may be used to hold the Thermasheath® in place temporarily until the furring strips and/or gypsum wallboard are mechanically fastened through the insulation back to the concrete substrate and/or furring strips.

Refer to Thermasheath® Product Data Sheet for additional application/installation, compliances, thermal and physical properties, limitations and warnings.



Warranty: See Rmax "Sales Policy" and "Fifteen Year Limited Thermal Warranty" for terms and conditions. Rmax does not assume any responsibility or liability for the performance of any products other than those manufactured by Rmax. **NOTE: All Rmax products must be tarped, placed on skids and kept dry before and throughout construction.**



BUILDING TRUST



PRODUCT APPLICATION SHEET  
THERMASHEATH®  
Revision.02-27-2020  
www.rmax.com  
(800) 527-0890