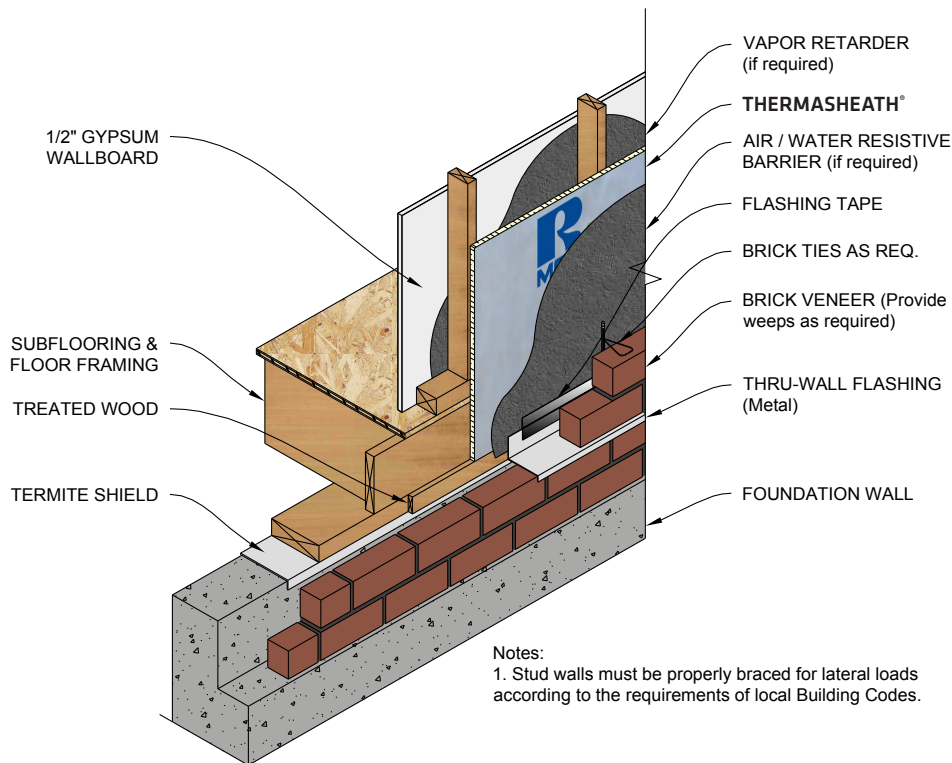


THERMASHEATH® STUD WALL APPLICATION

Rmax Thermasheath® applied to the exterior or interior face of studs, to cover all studs, sills, plates and header constructions, provides a layer of continuous insulation (ci) over details not normally covered by insulation products. It may be secured to the framing or structural sheathing with bugle-head screws, galvanized roofing nails or common nails driven through cap washers. Quality-grade construction adhesives may also be used to secure the Thermasheath® on interior applications. Exterior facades may include brick/stone veneer, exterior siding and stucco. Thermasheath® must be separated from the interior with a minimum 1/2" gypsum wallboard or equivalent thermal barrier. When insulation extends into the attic or crawl space, Thermasheath® has been tested to be left exposed without the code prescribed ignition barrier, provided the space is limited to servicing utilities. The maximum thickness is 1" in walls and ceilings or up to 4.5" in walls only.

Refer to Thermasheath® Product Data Sheet for additional application/installation, compliances, thermal and physical properties, limitations and warnings.



Warranty: See Rmax "Sales Policy" and "Fifteen Year Limited Thermal Warranty" for terms and conditions. Rmax does not assume any responsibility or liability for the performance of any products other than those manufactured by Rmax. **NOTE: All Rmax products must be tarped, placed on skids and kept dry before and throughout construction.**



BUILDING TRUST



PRODUCT APPLICATION SHEET
THERMASHEATH®
Revision.02-27-2020
www.rmax.com
(800) 527-0890