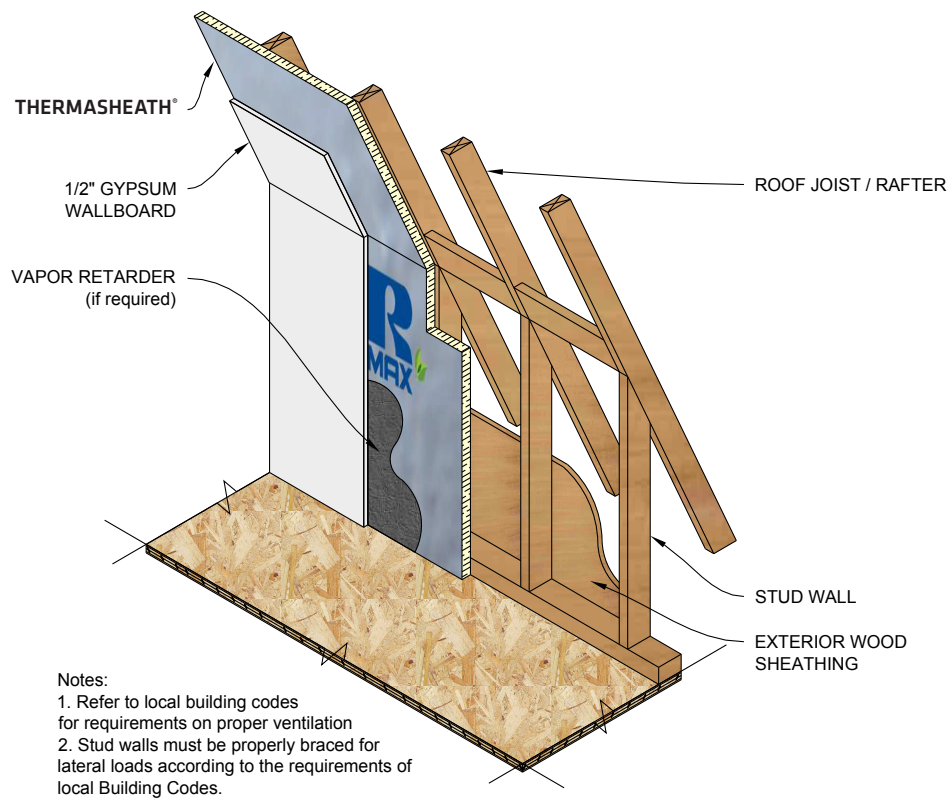


## THERMASHEATH® VAULTED CEILING APPLICATION

Rmax Thermasheath® may be applied to the inside face of the roof rafters in vaulted ceiling construction to provide a layer of continuous insulation (ci) and increase the R-value of the roof. Simply nail the Thermasheath® to the face of the rafter, cover with a minimum 1/2" gypsum wallboard and finish.

Refer to Thermasheath® Product Data Sheet for additional application/installation, compliances, thermal and physical properties, limitations and warnings.



Warranty: See Rmax "Sales Policy" and "Fifteen Year Limited Thermal Warranty" for terms and conditions. Rmax does not assume any responsibility or liability for the performance of any products other than those manufactured by Rmax. **NOTE: All Rmax products must be tarped, placed on skids and kept dry before and throughout construction.**



BUILDING TRUST



PRODUCT APPLICATION SHEET  
THERMASHEATH®  
Revision.02-27-2020  
www.rmax.com  
(800) 527-0890