

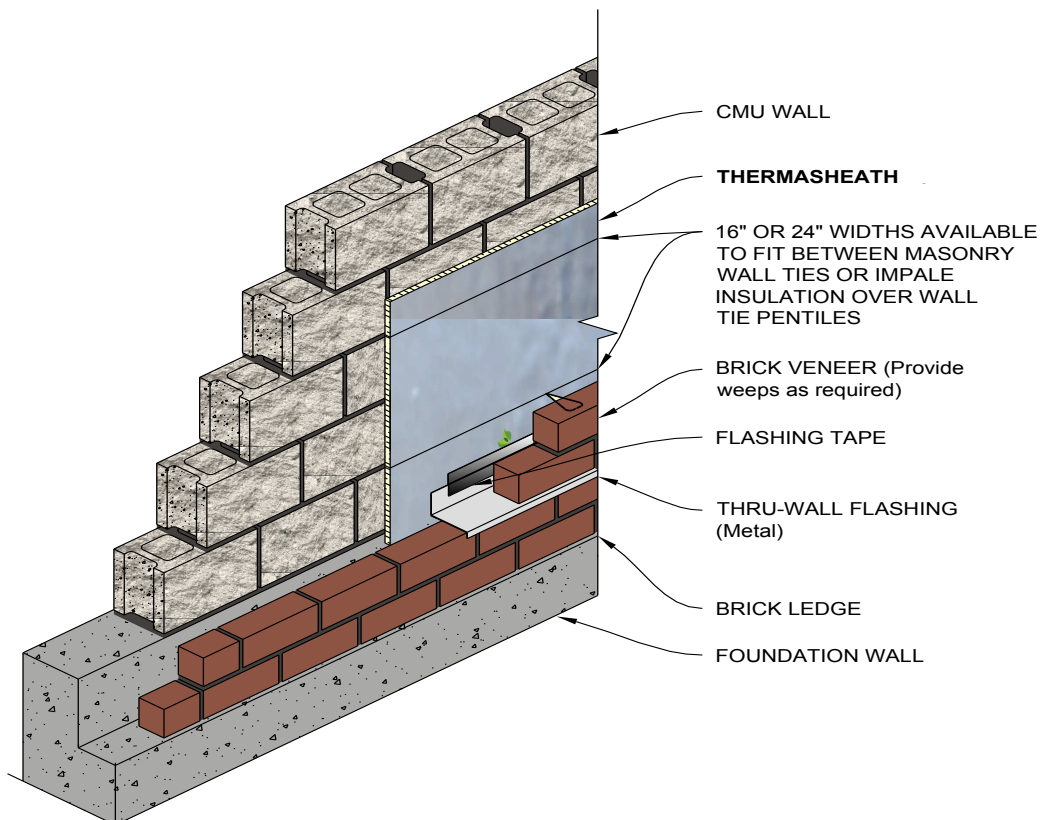
Product Application Sheet

THERMASHEATH®

CAVITY WALL (BRICK VENEER) APPLICATION

Rmax Thermasheath® is an excellent cavity insulation product fitting between the masonry block and finished brick veneer of any residential or commercial project. It may be secured to the dry face of the masonry block wall with a quality grade construction adhesive. Thermasheath® can be cut to fit between masonry joint reinforcements placed to tie the brick veneer to the concrete block back-up and installed horizontally in strips to allow the wall ties to extend beyond the face of the insulation leaving the proper air spaces as required.

Refer to Thermasheath® Product Data Sheet for additional application/installation, compliances, thermal and physical properties, limitations and warnings.



WARRANTY

See Rmax® sales policy and limited warranties for terms and conditions. Rmax® does not assume any responsibility or liability for the performance of any products other than those manufactured by Rmax®. **NOTE: Factory packaging should not be relied upon as protection at job sites or other outdoor storage locations. When short-term outdoor storage is necessary, take the following precautions: Store flat above ground on raised pallets, place bundles on finished surfaces, cover with a breathable tarpaulin and secure cover to prevent wind displacement.**