

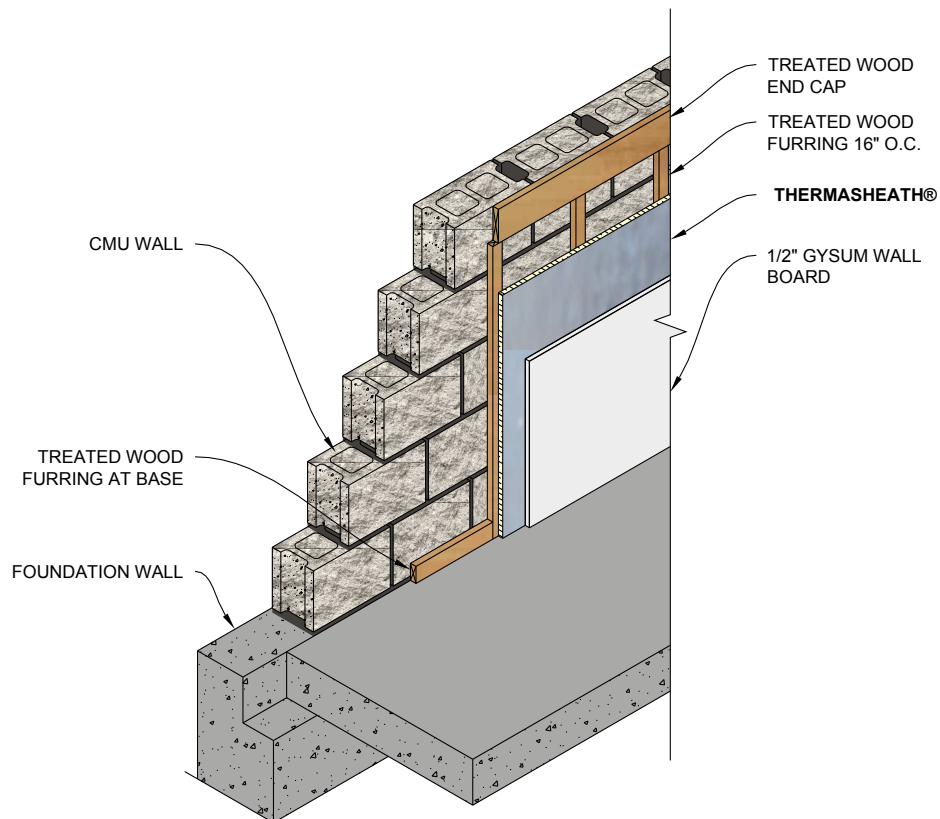
## Product Application Sheet

# THERMASHEATH®

## MASONRY WALL APPLICATION

Rmax Thermasheath® is applied to the interior face of concrete or concrete masonry walls to provide a layer of continuous insulation (ci) over the entire surface. It may be secured over or under furring strips, followed by a minimum 1/2" gypsum wallboard interior finish. Adhesive or fasteners may be used to hold the Thermasheath® in place temporarily until the furring strips and/or gypsum wallboard are mechanically fastened through the insulation back to the concrete substrate and/or furring strips.

Refer to Thermasheath® Product Data Sheet for additional application/installation, compliances, thermal and physical properties, limitations and warnings.

**WARRANTY**

See Rmax® sales policy and limited warranties for terms and conditions. Rmax® does not assume any responsibility or liability for the performance of any products other than those manufactured by Rmax®. **NOTE: Factory packaging should not be relied upon as protection at job sites or other outdoor storage locations. When short-term outdoor storage is necessary, take the following precautions: Store flat above ground on raised pallets, place bundles on finished surfaces, cover with a breathable tarpaulin and secure cover to prevent wind displacement.**