

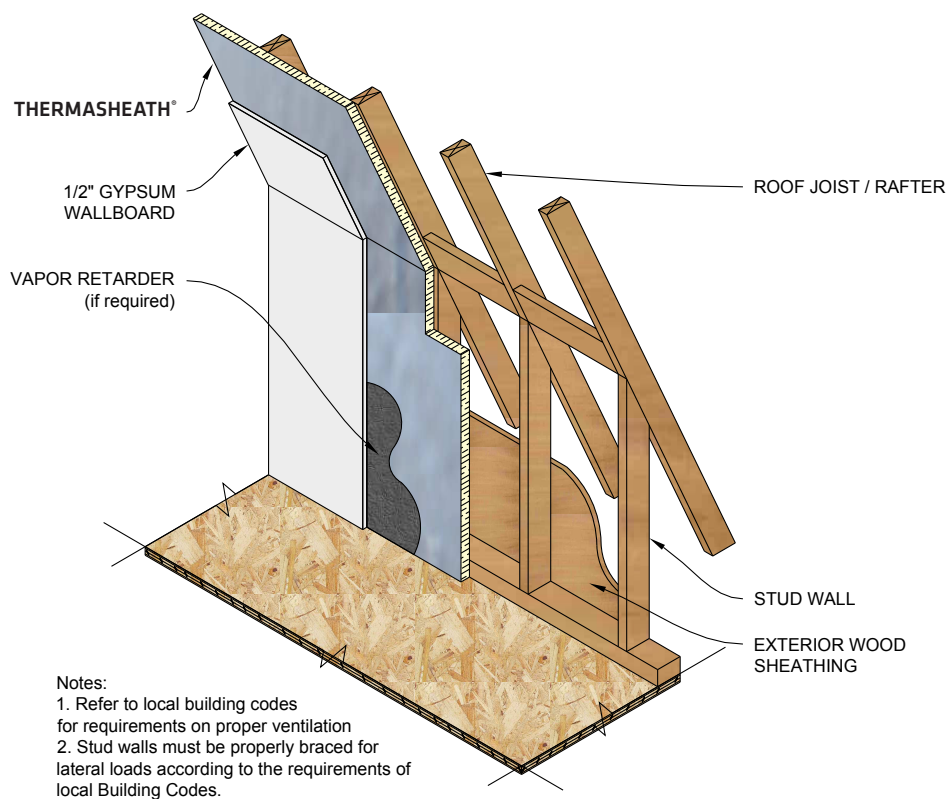
## Product Application Sheet

# THERMASHEATH®

## VAULTED CEILING APPLICATION

Rmax Thermasheath® may be applied to the inside face of the roof rafters in vaulted ceiling construction to provide a layer of continuous insulation (ci) and increase the R-value of the roof. Simply nail the Thermasheath® to the face of the rafter, cover with a minimum 1/2" gypsum wallboard and finish.

Refer to Thermasheath® Product Data Sheet for additional application/installation, compliances, thermal and physical properties, limitations and warnings.



### WARRANTY

See Rmax® sales policy and limited warranties for terms and conditions. Rmax® does not assume any responsibility or liability for the performance of any products other than those manufactured by Rmax®. **NOTE: Factory packaging should not be relied upon as protection at job sites or other outdoor storage locations. When short-term outdoor storage is necessary, take the following precautions: Store flat above ground on raised pallets, place bundles on finished surfaces, cover with a breathable tarpaulin and secure cover to prevent wind displacement.**