

## Product Application Sheet

# THERMASHEATH®-SI

## STUD WALL (WOOD FRAME)

Rmax Thermasheath®-SI is applied to the exterior face of studs continuously or with Thermasheath®, to cover all studs, sills, plates and header constructions, provides a layer of continuous insulation (ci) over details not normally covered by insulation products. Exterior facades include brick or stone veneer, stucco and exterior siding (wood, vinyl, aluminum or cement board). Simply attach the veneer through the insulation directly to the wood studs. Where desired, install furring strips vertically over the Thermasheath®-SI first ensuring they line up with the stud framing behind. Then attach the veneer to the furring strips.

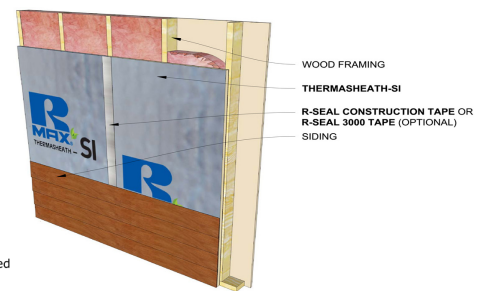
Thermasheath®-SI must be separated from the interior with a minimum 1/2" gypsum wallboard or equivalent thermal barrier. When insulation extends into the attic or crawl space, Thermasheath®-SI has been tested to be left exposed without the code prescribed ignition barrier, provided the space is limited to servicing utilities. The maximum thickness is 1" in walls and ceilings or up to 4.5" in walls only.

**Refer to Thermasheath®-SI Product Data Sheet for additional application/installation, compliances, thermal and physical properties, limitations and warnings.**

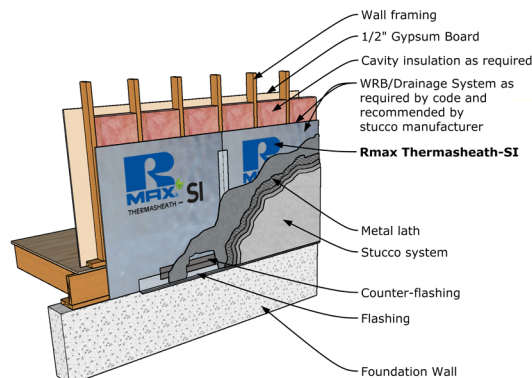
### Brick Veneer (or stone)



### Exterior Siding (wood, vinyl, aluminum, cement board)



### Stucco



### WARRANTY

See Rmax® sales policy and limited warranties for terms and conditions. Rmax® does not assume any responsibility or liability for the performance of any products other than those manufactured by Rmax®. **NOTE: Factory packaging should not be relied upon as protection at job sites or other outdoor storage locations. When short-term outdoor storage is necessary, take the following precautions: Store flat above ground on raised pallets, place bundles on finished surfaces, cover with a breathable tarpaulin and secure cover to prevent wind displacement.**