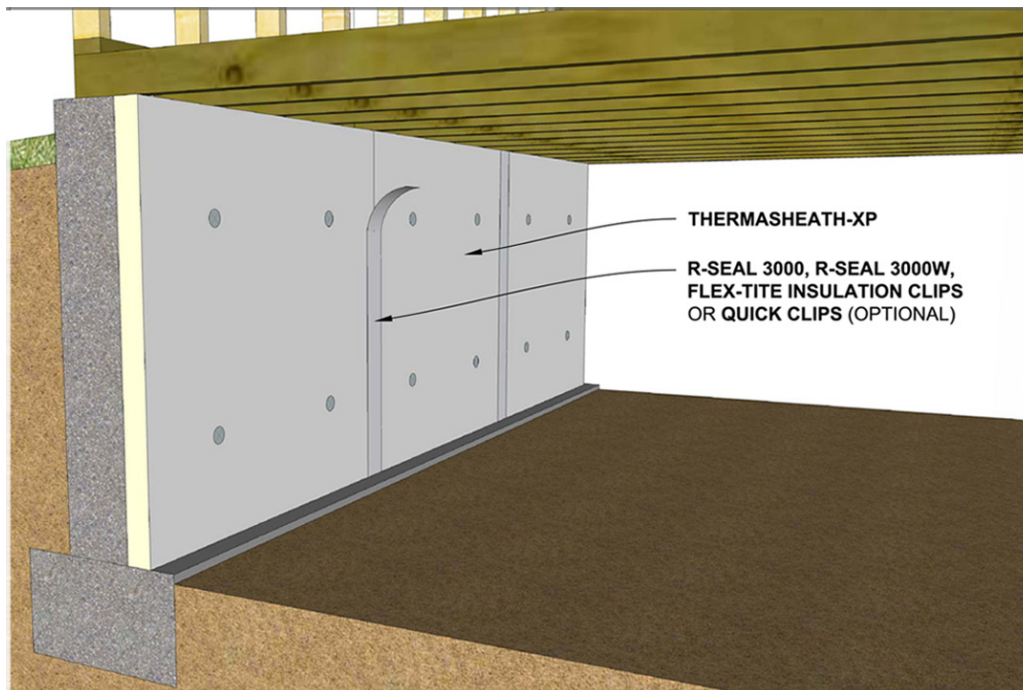


# Thermasheath®-XP: Insulation for Exposed Use

## Crawl Space Application

Thermasheath®-XP may be applied to the walls or ceilings within crawl spaces without the need for an additional thermal or ignition barrier, including when the space is used for storage. When installed on both walls and ceilings, the space is limited to servicing utilities or one plane must be covered with an ignition barrier. Simply fasten the Thermasheath®-XP directly to the masonry or wood framing. Consult your local Building Code for ventilation requirements within crawl spaces.

Refer to Thermasheath®-XP data sheet for additional application/installation, compliances, thermal and physical properties, limitations and warnings.



Warranty: See Rmax "Sales Policy" and "Fifteen Year Limited Thermal Warranty" for terms and conditions. Rmax does not assume any responsibility or liability for the performance of any products other than those manufactured by Rmax. **NOTE: All Rmax products must be tarped, placed on skids and kept dry before and throughout construction.**