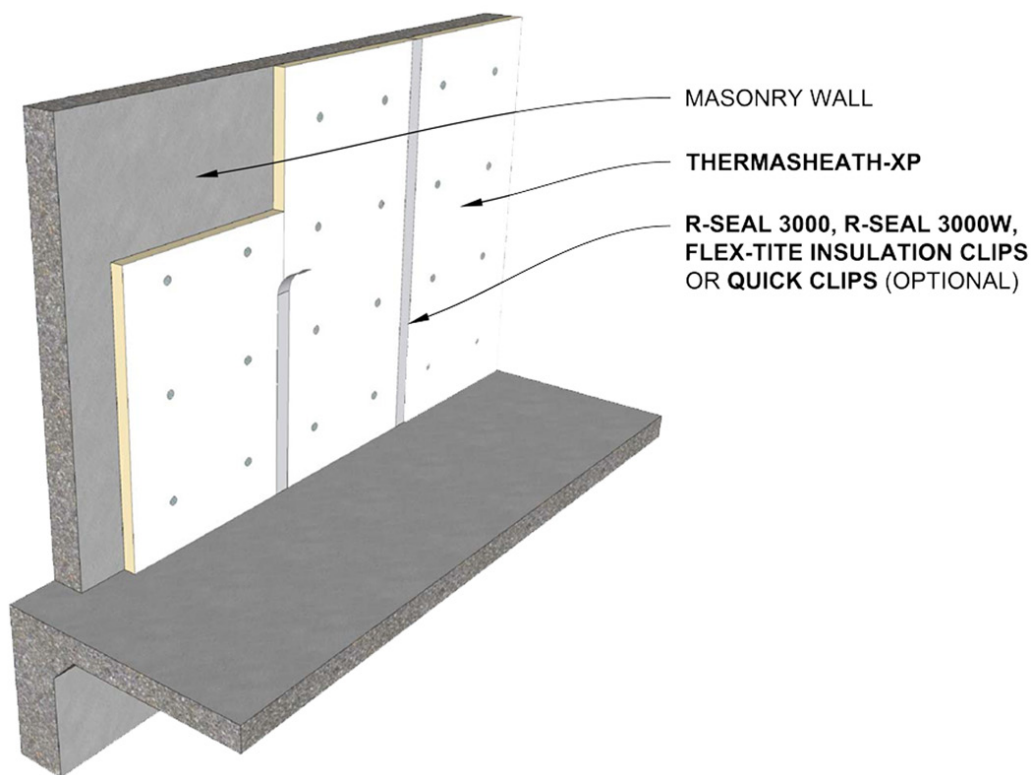


Thermasheath®-XP: Insulation for Exposed Use

Masonry Wall Application

Thermasheath®-XP may be applied to the interior face of concrete or concrete masonry walls to provide a finished layer of continuous insulation (ci) over the entire surface. For example, Thermasheath®-XP is an excellent product for use in insulating the interior side of basement walls. It may be adhered or anchored directly to the concrete surface or attached to furring. Use Rmax PVC insulation clips for an easy, yet clean, professional install. Refer to Rmax publication, *Installation Instructions for Exposed Basement Walls*, for additional information and guidelines on installation, joint treatment and sealing techniques.

Refer to Thermasheath®-XP data sheet for additional application/installation, compliances, thermal and physical properties, limitations and warnings.



Warranty: See Rmax "Sales Policy" and "Fifteen Year Limited Thermal Warranty" for terms and conditions. Rmax does not assume any responsibility or liability for the performance of any products other than those manufactured by Rmax. **NOTE: All Rmax products must be tarped, placed on skids and kept dry before and throughout construction.**