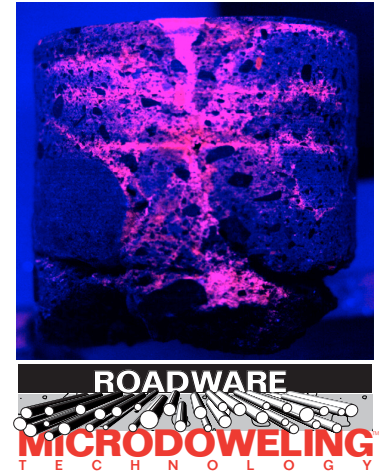


ROADWARE 10 MINUTE CONCRETE MENDER™



Roadware 10 Minute **Concrete Mender™** is the only concrete repair product that penetrates deep into concrete and repairs from the inside out. Do not be fooled by cheap products that come in a cartridge and look the same. Look below to see how they compare.



	Concrete Mender™ Hybrid-Polyurethane	Epoxy Grout Epoxy	Polyurea Crack Filler Polyurea	Low Viscosity Polyurea Polyurea
Bonding	Full Penetration Bond	Surface bond only	Surface bond only	Surface Bond only
Viscosity (water = 1 cps)	>8 cps	10,000 cps	1500cps	60 - 190cps
Grind and polish	Yes	No	No	No
Trowelable	Yes	Yes	No	Limited
Cooler/ Freezer Application	- 30°F	No	Yes	Yes
Structurally Re-bonds cracked slabs	Yes	No	No	No
Protects sidewalls from further damage	Yes	No	No	Limited
Feather edge repairs	Yes	No	No	Not listed
Cure time to traffic	10 Minutes	24 Hours	30 minutes	10-15 Minutes
Blending and Finishing	15 Minutes	None	None	24 Hours
Extendable with sand and rock	Yes up to 6x	No	No	Limited
Handy Cartridge Application	Yes	No	No	Yes
Non-shrinking	Yes	No	No	Unknown
Unlimited depth and width	Yes	No	No	Unknown
Chemical Resistance	Excellent	Fair	Good	Good
Dynamic Load Transfer	Yes	No	No	No
Needle tip gravity crack injection	Yes	No	No	No

Visit our web site at www.roadware.us
800-522-7623

