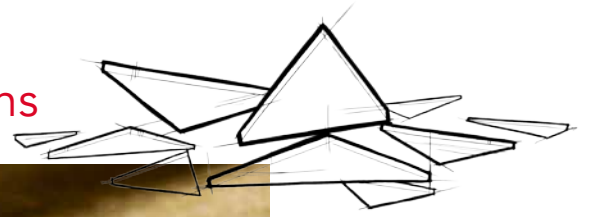


FABROCK™ 60

Board Insulation for OEM Applications



ROCKWOOL FABROCK™ 60 is a semi-rigid stone wool insulation board designed to be fabricated into different dimensions to meet the aesthetic or functional needs of your application.

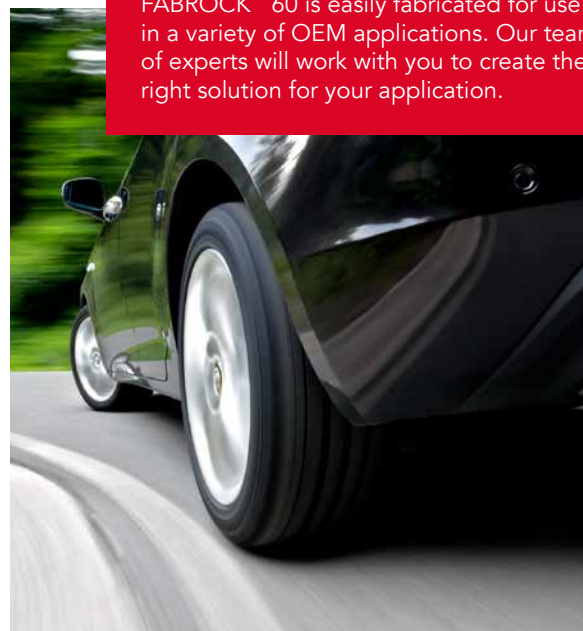
It is non-combustible and will not develop smoke or promote flame spread, even when directly exposed to fire. It also repels and drains water away from the product, and will completely dry out while maintaining its original physical properties.

The unique non-directional structure of ROCKWOOL stone wool insulation is denser than traditional insulations. This reduces airflow and sound transmissions. Higher airflow resistivity means better sound attenuation.

Learn more at rockwool.com

Versatility

FABROCK™ 60 is easily fabricated for use in a variety of OEM applications. Our team of experts will work with you to create the right solution for your application.



FABROCK™ 60

Board Insulation for OEM Applications

Technical Data Sheet

Board Insulation 15080* • Process Equipment Insulation 404223**
Mineral Wool Board Insulation 07 21 13**

ROCKWOOL FABROCK™ 60 is a non-combustible, semi-rigid, water-repellent, stone wool insulation board designed for fabrication.

	Performance	Test Standard																																
Compliance	Mineral Fiber Block and Board Thermal Insulation - Type IVB Compliant	ASTM C612																																
Reaction to Fire	Flame spread index = 0 ; Smoke development index = 0 Flame spread index = 0 ; Smoke development index = 0 Behaviour of materials at 750°C (1382°F) - Non Combustible Test for Non-Combustibility - Non Combustible Hot Surface Performance - 1200°F (650°C)	ASTM E84 (UL 723) CAN/ULC S102 CAN/ULC S114 ASTM E136 ASTM C411																																
Density	Nominal Density 6.0 lb/ft ³ (96 kg/m ³) Actual Density 4.5 lb/ft ³ (72 kg/m ³)	ASTM C303																																
Dimensional Stability	Linear Shrinkage <1% @ 1200°F	ASTM C356																																
Corrosion Resistance	Stress Corrosion Cracking Tendency of Austenitic Stainless Steel - Passed Corrosion of Steel - Passed	ASTM C795 ASTM C665																																
Thermal Resistance	R-Value / inch @ 75°F 4.2 hr.ft ² .F/Btu RSI value / 25.4 mm @ 24°C 0.74 m ² K/W	ASTM C518 (C177)																																
Reaction to Moisture	Moisture Sorption by weight - 0.03% Determination of Fungi Resistance - Passed	ASTM C1104 ASTM C1338																																
Compressive Strength	104psf (5kPa) @ 10% compression 230psf (11kPa) @ 25% compression	ASTM C165																																
Thickness Dimensions	Please contact ROCKWOOL for sizing information (1-800-265-6878)																																	
Acoustical Performance	<table border="1"> <thead> <tr> <th>Thickness</th> <th>125 Hz</th> <th>250 Hz</th> <th>500 Hz</th> <th>1000 Hz</th> <th>2000Hz</th> <th>4000 Hz</th> <th>NRC</th> </tr> </thead> <tbody> <tr> <td>1.5"</td> <td>0.19</td> <td>0.55</td> <td>1.03</td> <td>1.06</td> <td>1.02</td> <td>1.01</td> <td>0.9</td> </tr> <tr> <td>2"</td> <td>0.26</td> <td>0.71</td> <td>1.14</td> <td>1.09</td> <td>1.04</td> <td>1.03</td> <td>1</td> </tr> <tr> <td>4"</td> <td>0.92</td> <td>1.04</td> <td>1.07</td> <td>1.07</td> <td>1.07</td> <td>1.08</td> <td>1.05</td> </tr> </tbody> </table>	Thickness	125 Hz	250 Hz	500 Hz	1000 Hz	2000Hz	4000 Hz	NRC	1.5"	0.19	0.55	1.03	1.06	1.02	1.01	0.9	2"	0.26	0.71	1.14	1.09	1.04	1.03	1	4"	0.92	1.04	1.07	1.07	1.07	1.08	1.05	ASTM C423
Thickness	125 Hz	250 Hz	500 Hz	1000 Hz	2000Hz	4000 Hz	NRC																											
1.5"	0.19	0.55	1.03	1.06	1.02	1.01	0.9																											
2"	0.26	0.71	1.14	1.09	1.04	1.03	1																											
4"	0.92	1.04	1.07	1.07	1.07	1.08	1.05																											

Issued 01-01-18
Supersedes 08-23-17

NOTE: *Master Format 1995 Edition **Master Format 2004 Edition. As ROCKWOOL has no control over installation design and workmanship, accessory materials or application conditions, ROCKWOOL does not warranty the performance or results of any installation containing ROCKWOOL's products. ROCKWOOL's overall liability and the remedies available are limited by the general terms and conditions of sale. This warranty is in lieu of all other warranties and conditions expressed or implied, including the warranties of merchantability and fitness for a particular purpose.