



EIFS with ROCKWOOL™ Stone Wool Insulation

Exterior Insulation and Finish Systems (EIFS) with ROCKWOOL stone wool insulation provide added performance to traditional systems that use rigid foam. Superior fire resilience, reliable long-term energy efficiency, moisture control and acoustic comfort are only part of the value a fully engineered facade system with stone wool offers. Always follow the specification and installation instructions from the system holder when designing and constructing code approved assemblies.



Fire

Noncombustible, Class A (ASTM E84) insulation permitting use of EIFS in non-loadbearing fire-resistance-rated construction and any construction type (IBC Types I through V), without height or setback limitations



Moisture

Contributes toward EIFS that allow for a high degree of drying potential and meets industry standards for drainage efficiency (ASTM E2273) using standard adhesive ribbons



Durability

Proven impact resistance that meets or exceeds industry standards (ASTM E2486), stone wool provides a stable substrate and is also resistant to termites



Acoustics

Improved acoustic dampening for a quieter environment, with third-party tested solutions for wood- and steel-frame construction with values up to STC 52 and OITC 36.



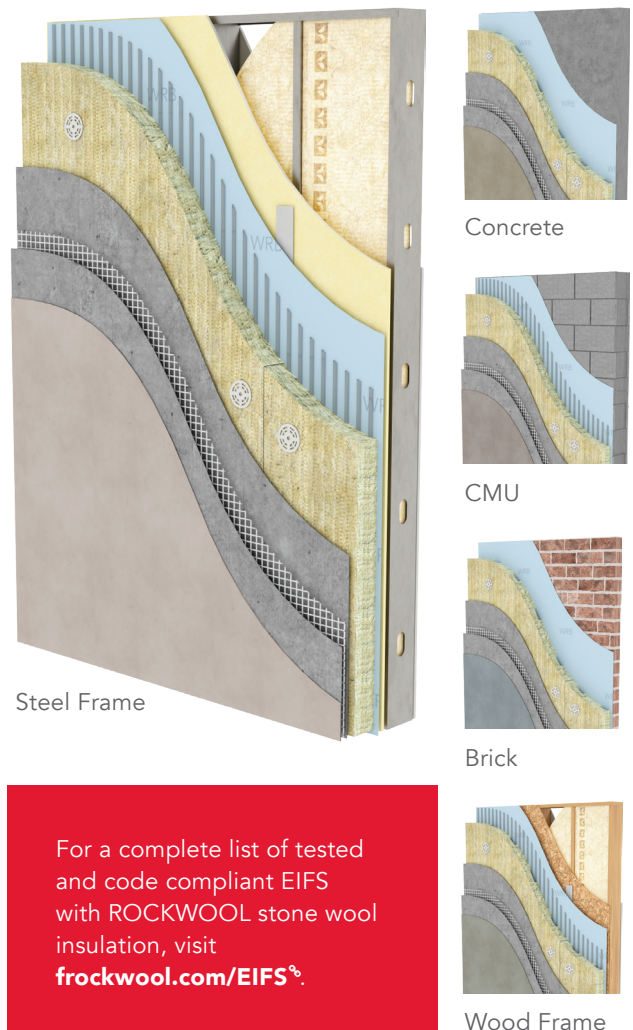
Thermal Performance

ROCKWOOL Frontrock™ provides a stable R4 per inch and maintains its thermal performance over the lifetime of the building.



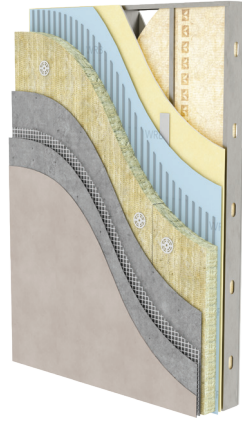
By Nature

Manufactured from one of the world's most abundant raw materials without the use of blowing agents or toxic flame retardants, EIFS with stone wool contributes towards LEED credits for your project

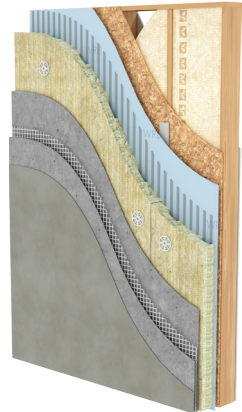


EIFS Acoustic Rated Assemblies

Specify and install Exterior Insulation and Finish System assemblies that offer advanced acoustic dampening without sacrificing the thermal performance and aesthetic benefits. This can contribute to a more comfortable and peaceful indoor environment, especially in noisy urban areas or near high-traffic zones.



Steel Framed Wall Assemblies			
Interior Finish	min. 5/8in. Gypsum Board		min. 5/8in. Gypsum Board
Framing (Steel Studs)	min. 6in., 20GA or thinner, spaced min.16in. o.c.		min. 3-5/8in., 18GA or thinner, spaced min.16in. o.c.
Cavity Insulation	min. 6in. Comfortbatt	None	min. 3.5in. Comfortbatt
Sheathing	min. 5/8in. glass mat gypsum		min. 1/2in. glass mat gypsum
WRB	Air/Water-resistive Barrier		Air/Water-resistive Barrier
Adhesive/ Drainage	Adhesive Ribbons*		Adhesive Ribbons*
Continuous Insulation	min. 2in. ROCKWOOL Frontrock		min. 1.5in. ROCKWOOL Frontrock
Insulation Attachment	High density plaster washers**		High density plaster washers**
Base Coat & Mesh	4 oz. glass fiber mesh embedded into base coat		4 oz. glass fiber mesh embedded into base coat
Finish Coat	One-component polymer-modified		One-component polymer-modified
STC	51	47	50
OITC	36	33	35



Wood Framed Wall Assemblies			
Interior Finish	min. 5/8in. Gypsum Board		min. 1/2in. Gypsum Board
Framing (Wood Studs)	min. nominal 2x6, spaced min. 16in. o.c.		min. nominal 2x4, spaced min. 16in. o.c.
Cavity Insulation	min. 5.5in. Comfortbatt	None	min. 3.5in. Comfortbatt
Sheathing	min. 1/2in. OSB (or similar structural wood sheathing)		min. 7/16in. OSB (or similar structural wood sheathing)
WRB	Air/Water-resistive Barrier		Air/Water-resistive Barrier
Adhesive/ Drainage	Adhesive Ribbons*		Adhesive Ribbons*
Continuous Insulation	min. 2in. ROCKWOOL Frontrock		min. 1.5in. ROCKWOOL Frontrock
Insulation Attachment	High density plaster washers**		High density plaster washers**
Base Coat & Mesh	4 oz. glass fiber mesh embedded into base coat		4 oz. glass fiber mesh embedded into base coat
Finish Coat	One-component polymer-modified		One-component polymer-modified
STC	49	47	49
OITC	35	32	31

* Base Coat applied to entire surface of ci using stainless-steel notched trowel with 1/2in. by 1/2in. notches and creating ribbons spaced 2in. apart

**1-3/4in. diameter, used in combination with corrosion-resistant screws suitable for the substrate (9 per board)

Need help estimating the acoustic performance of your next wall assembly?
Contact our Building Science experts for support.
Visit rockwool.com/building-science-support.

ROCKWOOL Frontrock™

ROCKWOOL Frontrock stone wool EIFS boards are engineered to help reduce base coat consumption, provide rigid surface resistance against accidental impact, and adapt to irregularities of the wall in mechanically-fastened EIFS.

- Manufactured with tight dimensional tolerances, Frontrock has been engineered based on 25+ years of ROCKWOOL EIFS experience globally
- Incorporates a supplementary level of quality control during the manufacturing process to maximize board consistency and quality
- Easy to handle, cut, and install for field and panelized applications
- Frontrock has a Red List Approved Declare label, and an HPD, supporting green building practices
- Designed for use with EIFS for new construction and retrofit projects including as an overcladding solution



For more information about the product including technical data, visit rockwool.com/frontrock

SKU Profile

ROCKWOOL Frontrock is available in two versions. The monolithic density offers consistent compressive strength throughout the board, and is always used below 2.5" thicknesses. The dual density design is unique to ROCKWOOL and helps to reduce board weight for improved job site handleability during installation.

Product #	Density	Thickness	Width	Length	R-value
293391	Monolithic Density	1.50"	24"	48"	6.0
293445	Monolithic Density	2.00"	24"	48"	8.0
293443	Monolithic Density	2.50"	24"	48"	10.0
293397	Monolithic Density	3.00"	24"	48"	12.0
293395	Monolithic Density	4.00"	24"	48"	16.0
293393	Monolithic Density	5.00"	24"	48"	20.0
284222	Dual Density	2.50"	24"	48"	10.0
284216	Dual Density	3.00"	24"	48"	12.0
284219	Dual Density	3.50"	24"	48"	14.0
284223	Dual Density	4.00"	24"	48"	16.0

Need sample material for a product review or mock-ups?
Visit rockwool.com/ordersamples or contact your local ROCKWOOL representative for more information.

At the ROCKWOOL Group, we are committed to enriching the lives of everyone who comes into contact with our solutions. Our expertise is perfectly suited to tackle many of today's smallest sustainability and development challenges, from energy consumption and noise pollution to fire resilience, water scarcity and flooding. Our range of products reflects the diversity of the world's needs, while supporting our stakeholders in reducing their own carbon footprint.

Stone wool is a versatile material and forms the basis of all our businesses. With more than 11,000 employees in 39 countries, we are the world leader in stone wool solutions, from building insulation to acoustic ceilings, external cladding systems to horticultural solutions, engineered fibres for industrial use to insulation for the process industry and marine and offshore.

AFB®, Cavityrock®, Comfortbatt®, Comfortboard®, Conrock®, Curtainrock®, ROXUL Safe®, Rockboard®, Toprock®, Monoboard®, ROXUL® are registered trademarks of the ROCKWOOL Group in USA and ROXUL Inc. in Canada.

ROCKWOOL™ and Fabrock™ are trademarks of the ROCKWOOL Group in USA and ROXUL Inc. in Canada.

SAFE'n'SOUND® is a registered trademark used under license by Masonite Inc.

Publication date - edition: 06/2024



ROCKWOOL
8024 Esquesing Line
Milton, ON L9T 6W3
Tel: 1 800 265 6878
rockwool.com