

ROXUL Safe™ 45

Residential Party Wall Insulation



ROXUL SAFE™ 45 is a semi-rigid stone wool insulation board from ROCKWOOL that is specifically engineered as a fire-blocking material for concealed spaces of multi-unit residential buildings.

Using ROXUL SAFE™ 45 with our ROCKWOOL batt insulation creates a high-density “party” wall system that improves sound dampening and fire performance. It also reduces the time, labor and material costs usually associated with adding a double layer of gypsum over the wall studs.

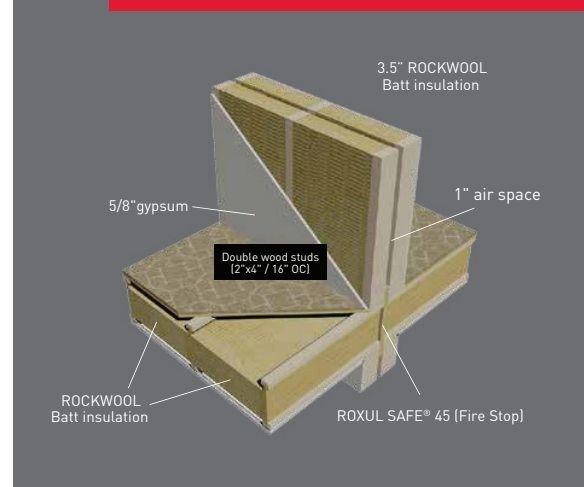
With this party wall system in place, required performance specs exceed code while vibration and sound transmission between party walls is reduced.

ROXUL SAFE™ 45 fire separation board complies with the fire-blocking National Building Code, is easy to install, and offers excellent water and moisture resistance.

Learn more at rockwool.com

Party Wall System Advantage

Reduces time, labor and material costs on party wall stud partitions and increases occupant comfort.



ROXUL Safe™ 45

Residential Party Wall Insulation

Technical Data Sheet
 Board Insulation 07210*
 Board Insulation 07 21 13**

ROXUL SAFE™ 45 is a semi-rigid, mineral wool insulation board designed for firestopping in concealed spaces of residential units. This product complies with the 2010 National Building Code 9.10.16.3(2).

	Performance	Test Standard
Compliance	Mineral Fiber Block and Board Thermal Insulation - Type IVA Compliant Mineral Fiber Thermal Insulation for Buildings - Type 1 Compliant	ASTM C612 CAN/ULC S702
Reaction to Fire	Flame spread index = 0; Smoke developed index = 0 Flame spread index = 0; Smoke developed index = 0 Determination of Non-combustibility of Building Materials - Non-combustible Behavior of materials at 750°C - Non-combustible	ASTM E84 (UL 723) CAN/ULC S102 CAN/ULC S114 ASTM E136
Density	Actual Density - 4.4 lbs/ft ³ (70 kg/m ³)	ASTM C303
Dimensional Stability	Linear Shrinkage - <1% @ 1200°F	ASTM C356
Corrosion Resistance	Stress Corrosion Cracking Tendency of Austenitic Stainless Steel - Passed Corrosion of Steel - Passed	ASTM C795 ASTM C665
Thermal Resistance	R-Value / inch @ 75°F 4.2 hr.ft ² .F/Btu RSI value / 25.4 mm @ 24°C 0.74 m ² K/W	ASTM C518 (C177)
Reaction to Moisture	Moisture Sorption by weight - 0.03% Determination of Fungi Resistance - Passed	ASTM C1104 ASTM C1338
Thickness Dimensions	Product is available in 1" thickness (25.4 mm) 16" x 48" (406 mm x 1219 mm), 24" x 48" (610 mm x 1219 mm)	

Issued 01-01-18
 Supersedes 08-23-17

NOTE: *Master Format 1995 Edition **Master Format 2004 Edition. As ROCKWOOL has no control over installation design and workmanship, accessory materials or application conditions, ROCKWOOL does not warranty the performance or results of any installation containing ROCKWOOL's products. ROCKWOOL's overall liability and the remedies available are limited by the general terms and conditions of sale. This warranty is in lieu of all other warranties and conditions expressed or implied, including the warranties of merchantability and fitness for a particular purpose.



8024 Esquesing Line, Milton, ON L9T 6W3
 Tel: 800-265-6878 • Fax: 800-991-0110
 rockwool.com