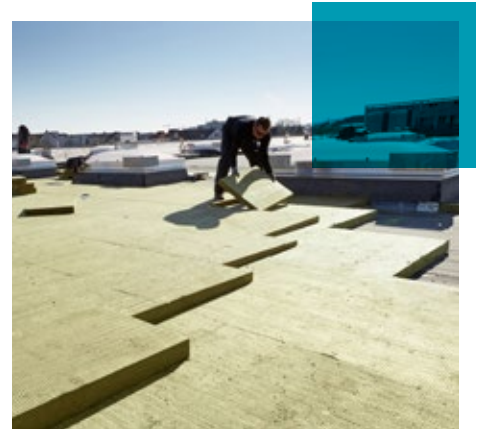




Low Slope Roof Insulation: Tapered, Flute Filler, and Cant Strips

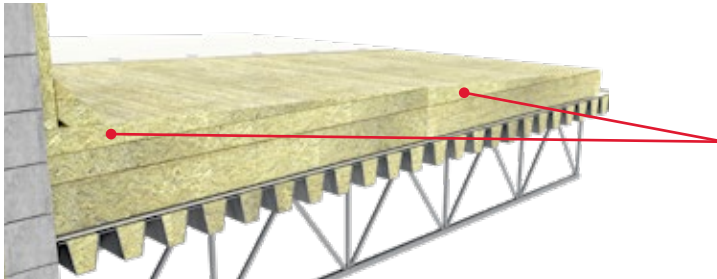


ROCKWOOL Toprock® fabricated stone wool insulation products are noncombustible – providing increased fire resistance, water resistant, and offer long-term dimensional stability. These components are engineered for compatibility with a variety of membrane types, air/vapor barriers, fasteners, and adhesives, making them critical components for a durable roof assembly in new construction and re-roofing.

Product Descriptions:

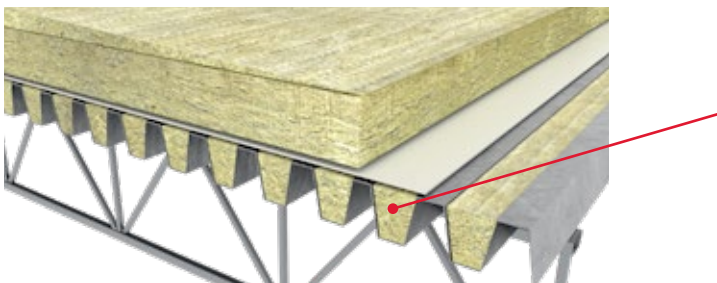
ROCKWOOL Toprock® Tapered & Tapered Plus

Engineered with a variety of slope options to ensure positive drainage of water from rooftop areas and to avoid ponding. Tapered components are available unfaced for use in mechanically-fastened applications, and with a bitumen coating for torch adhesive or hot mop applied membranes.



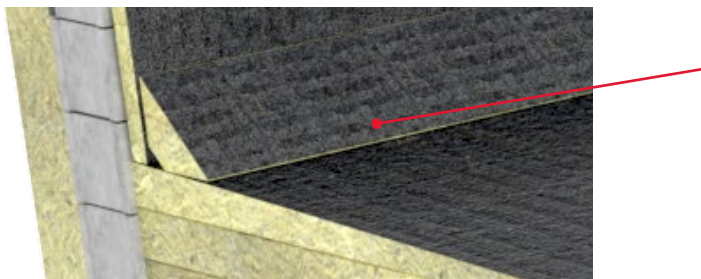
ROCKWOOL Toprock® Flute Filler

Designed to deliver high-performance sound absorption for acoustical metal decks. Flute Filler inserts into the void in standard metal deck profiles to absorb exterior noise and incidental sound that would otherwise be reflected back into the space below. Fabricated for a quick and easy installation, its high density helps safeguard the material from blowing away on the jobsite.



ROCKWOOL Toprock® Cant Strips

Fabricated bitumen coated stone wool insulation components designed to provide an additional 45° for transitions from a horizontal to a vertical surface. This includes installation designed to provide an additional 45° for transitions at parapet walls, mechanical units and other roof penetrations such as skylights, curbs, control joints and/or expansion joints.





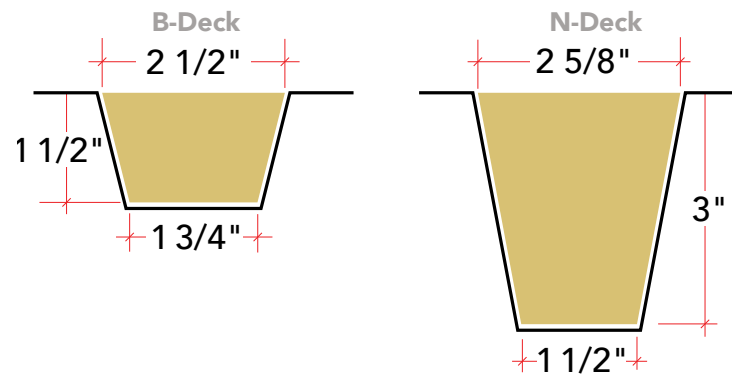
Stone wool insulation benefits:

- **Noncombustible:** Able to withstand temperatures up to 2,150°F (1,177°C) helping safeguard people and property, particularly for torched applications
- **Stable R-Value:** Stone wool will not expand or contract with changes in temperature, minimizing gaps and providing consistent energy efficiency for your building
- **Sound Absorbent:** High-density insulation offers improved sound reduction, helping dampen outdoor noise and rainfall
- **Water Resistance:** Will not absorb or adsorb moisture and increases the drying potential of the assembly
- **Ease of Installation:** cuts easily and cleanly with a serrated blade to produce precise, straight lines and lays flat with a seamless fit

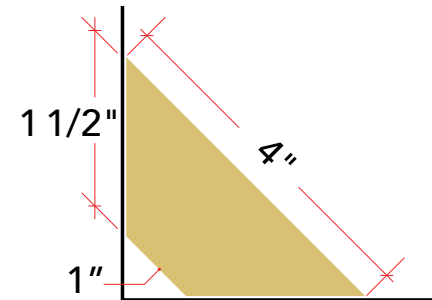
ROCKWOOL Toprock Tapered & Tapered Plus Sku Profile

Panel ID	Slope in. (mm)	Panel Thickness Range in. (mm)	Average Thickness in. (mm)	Panel Dimensions in. (mm)
AA	1/8 (3.175)	0.5 - 1.0 (12.7 - 25.4)	0.75 (19.05)	48 x 48 (1219 x 1219)
A	1/8 (3.175)	1.0 - 1.5 (25.4 - 38.1)	1.25 (31.75)	48 x 48 (1219 x 1219)
B	1/8 (3.175)	1.5 - 2.0 (38.1 - 50.8)	1.75 (44.45)	48 x 48 (1219 x 1219)
C	1/8 (3.175)	2.0 - 2.5 (50.8 - 63.5)	2.25 (57.15)	48 x 48 (1219 x 1219)
X	1/4 (6.35)	0.5 - 1.5 (12.7 - 38.1)	1 (25.4)	48 x 48 (1219 x 1219)
Y	1/4 (6.35)	1.5 - 2.5 (38.1 - 63.5)	2 (50.8)	48 x 48 (1219 x 1219)
Q	1/2 (12.7)	0.5 - 2.5 (12.7 - 63.5)	1.5 (38.1)	48 x 48 (1219 x 1219)
R	1/2 (12.7)	0.0 - 2.0 (0 - 50.8)	1 (25.4)	48 x 48 (1219 x 1219)

ROCKWOOL Toprock Flute Filler Dimensions



ROCKWOOL Toprock Cant Strip Dimensions



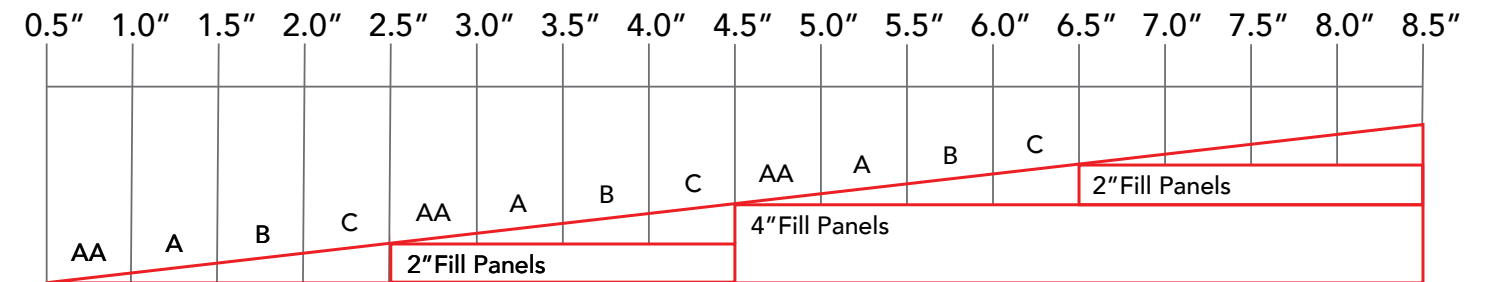
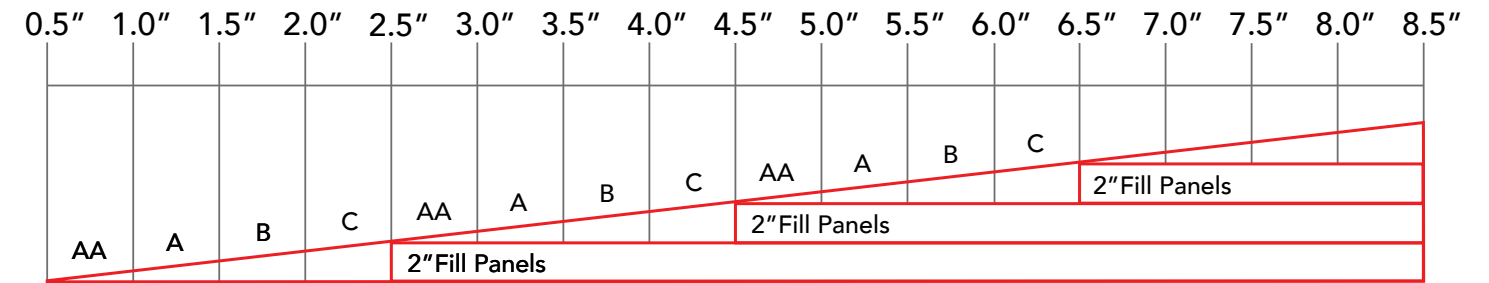
*Toprock Flute Filler and Toprock Cant Strips are available in 48" (1219 mm) lengths

Custom sized stone wool flute filler and tapered products, including crickets and sumps, may be available upon request. Contact your local ROCKWOOL representative for more details.

Component Sizing & Packaging Configurations

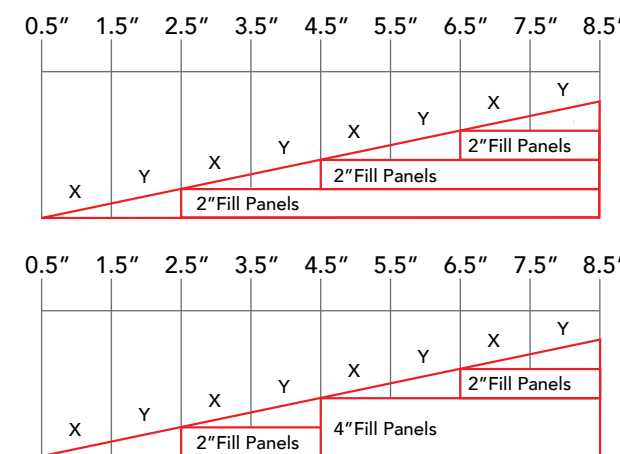
ROCKWOOL offers a series of industry standard tapered profiles to meet design and detailing requirements for low-slope roof assemblies. Determine the average system R-values for a tapered insulation project by using the average thickness of the components. ROCKWOOL Toprock Tapered & Tapered Plus profiles can be laid out in the same manner as other insulation products, and you can continue to use your existing design services for assistance with tapered layouts.

ROCKWOOL Toprock® Tapered 1/8" Slope:



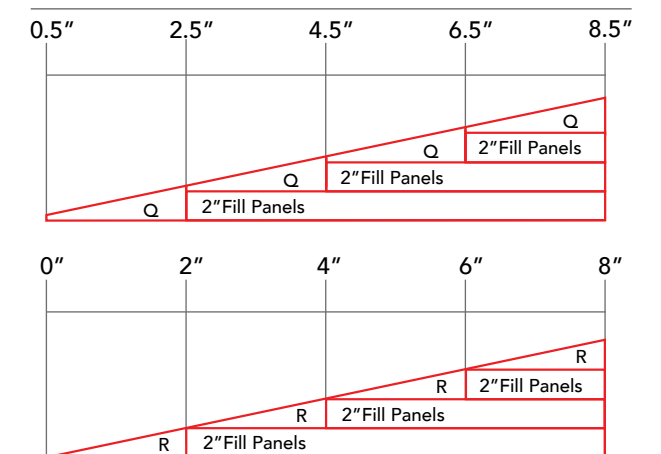
Fill Panels – ROCKWOOL Toprock DD, Toprock DD Plus or Multifix

ROCKWOOL Toprock® Tapered 1/4" Slope:



Fill Panels – ROCKWOOL Toprock DD, Toprock DD Plus or Multifix

ROCKWOOL Toprock® Tapered 1/2" Slope:



Fill Panels – ROCKWOOL Toprock DD, Toprock DD Plus or Multifix

ROCKWOOL tapered insulation products are components of numerous Underwriters Laboratory and Factory Mutual Approvals. Please contact our Technical Services team for more details at techservice@rockwool.com or at 1-877-823-9790

Technical Performance Details

ROCKWOOL Toprock Tapered, Tapered Plus, Flute Filler and Cant Strip materials are cut from high-density stone wool roof insulation.

Criteria	Performance	Test Standard															
Compliance	Standard Specification for Mineral Fiber Roof Insulation Boards NCC - Non-Combustible Core Rated Roof Insulation Class 1 approval for steel roof deck construction (refer to FM RoofNav for tested assemblies) Approval Standard for Single-Ply, Polymer-Modified Bitumen Sheet, Built-Up Roof (BUR) and Liquid Applied Roof Assemblies for use in Class 1 and Non-Combustible Roof Deck Construction	ASTM C726 FM 4470 FM 4470 FM 4470															
Reaction to Fire	Flame spread index = 0; Smoke developed index = 0 Flame spread index = 0; Smoke developed index = 0 Determination of Non-Combustibility of Building Materials – Non-Combustible	ASTM E84 (UL 723) CAN/ULC S102 CAN/ULC S114															
Density	12.5 lb/ft ³ (200 kg/m ³)	ASTM C303															
Thermal Resistance	<table border="1"> <thead> <tr> <th>Mean Temperature</th> <th>R-Value / inch</th> <th>RSI Value / 25.4 mm</th> </tr> </thead> <tbody> <tr> <td>75°F (24°C)</td> <td>3.8 hr.ft².F/Btu</td> <td>0.68 m²K/W</td> </tr> <tr> <td>25°F (-4°C)</td> <td>4.3 hr.ft².F/Btu</td> <td>0.74 m²K/W</td> </tr> <tr> <td>40°F (4°C)</td> <td>4.2 hr.ft².F/Btu</td> <td>0.72 m²K/W</td> </tr> <tr> <td>110°F (43°C)</td> <td>3.6 hr.ft².F/Btu</td> <td>0.64 m²K/W</td> </tr> </tbody> </table>	Mean Temperature	R-Value / inch	RSI Value / 25.4 mm	75°F (24°C)	3.8 hr.ft ² .F/Btu	0.68 m ² K/W	25°F (-4°C)	4.3 hr.ft ² .F/Btu	0.74 m ² K/W	40°F (4°C)	4.2 hr.ft ² .F/Btu	0.72 m ² K/W	110°F (43°C)	3.6 hr.ft ² .F/Btu	0.64 m ² K/W	ASTM C518 (C177)
Mean Temperature	R-Value / inch	RSI Value / 25.4 mm															
75°F (24°C)	3.8 hr.ft ² .F/Btu	0.68 m ² K/W															
25°F (-4°C)	4.3 hr.ft ² .F/Btu	0.74 m ² K/W															
40°F (4°C)	4.2 hr.ft ² .F/Btu	0.72 m ² K/W															
110°F (43°C)	3.6 hr.ft ² .F/Btu	0.64 m ² K/W															
Reaction to Moisture	Water Absorption - <5.0% vol Water Vapor Transmission, Desiccant Method - 2360 ng/Pa.s.m ² (41 perm)	ASTM C209 ASTM E96															
Compressive Strength	12.3psi (85 kPa) @ 10% compression 27.6psi (190kPa) @ 25% compression	ASTM C165															
Corrosion Resistance	Corrosion of Steel - Passed	ASTM C665															
Acoustical Performance	For a collection of STC, OITC and rainfall tested assemblies including the added performance of Toprock flute filler see our Roof Rated Acoustic Assembly Catalog																
Storage	For guidance on insulation storage see our Storage of ROCKWOOL Stone Wool Insulation Technical Bulletin																



For more information on tapered, flute filler and cant strip stone wool insulation products, including additional product testing and technical details, visit rockwool.com/roof-fabricated-components



ROCKWOOL
8024 Esquesing Line
Milton, ON L9T 6W3
Tel: 1 800 265 6878
rockwool.com