

# ROSEBURG

## ENGINEERED WOOD PRODUCTS



## ROSEBURG FRAMING SYSTEM®

quality engineered wood products for today's builder®

RFPI® JOIST • RIGIDLAM® LVL • RIGIDRIM® RIMBOARD



# THE ROSEBURG FRAMING SYSTEM®

The Roseburg Framing System® consists of: RFPI® Joists used in floor and roof construction; RIGIDLAM® LVL which is used for headers, beams, columns, studs and stair stringers; and RIGIDRIM® Rimboard. All of the components are engineered to

the industry's highest standards to help contractors build solid, durable, and better performing framing systems compared to ordinary dimension lumber.

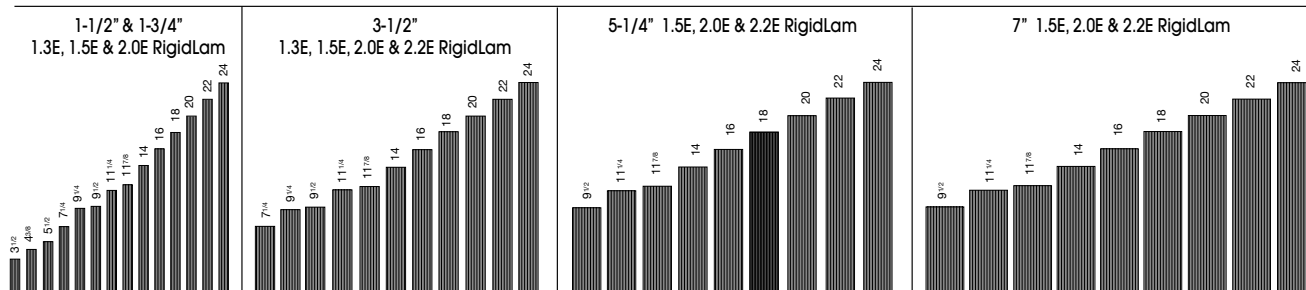
### LVL FLANGE RFPI® JOISTS

| RFPI® 20  | RFPI® 400  | RFPI® 40   | RFPI® 70   | RFPI® 90   | SOLID SAWN FLANGE RFPI® JOISTS                              | RFPI® 40S   | RFPI® 60S   |
|---|--|--|--|--|---|---|---|
|   |  |  |  |  |   |   |   |
| 1-3/4" wide x 1-3/8" LVL Flange<br>3/8" OSB Web | 2-1/16" wide x 1-3/8" LVL Flange<br>3/8" OSB Web | 2-5/16" wide x 1-3/8" LVL Flange<br>3/8" OSB Web | 2-5/16" wide x 1-1/2" LVL Flange<br>3/8" OSB Web | 3-1/2" wide x 1-1/2" LVL Flange<br>7/16" OSB Web | 2-1/2" wide x 1-1/2" 1.5E Solid Sawn Flange<br>3/8" OSB Web | 2-1/2" wide x 1-1/2" 1.8E Solid Sawn Flange<br>3/8" OSB Web | 2-1/2" wide x 1-1/2" 1.8E Solid Sawn Flange<br>3/8" OSB Web |

### RFPI® JOIST ALLOWABLE SPANS - 40 PSF LIVE LOAD AND 10 PSF DEAD LOAD

| Joist Depth | Joist Series | 40/10 SIMPLE SPAN |           |            |           | 40/10 MULTIPLE SPAN |           |            |           |
|-------------|--------------|-------------------|-----------|------------|-----------|---------------------|-----------|------------|-----------|
|             |              | 12" o.c.          | 16" o.c.  | 19.2" o.c. | 24" o.c.  | 12" o.c.            | 16" o.c.  | 19.2" o.c. | 24" o.c.  |
| 9-1/2"      | RFPI® 20     | 17' - 2"          | 15' - 9"  | 14' - 10"  | 13' - 10" | 18' - 9"            | 17' - 1"  | 16' - 2"   | 14' - 0"  |
|             | RFPI® 40S    | 18' - 0"          | 16' - 5"  | 15' - 6"   | 14' - 6"  | 19' - 7"            | 17' - 11" | 16' - 4"   | 14' - 7"  |
|             | RFPI® 400    | 18' - 0"          | 16' - 5"  | 15' - 6"   | 14' - 6"  | 19' - 7"            | 17' - 10" | 16' - 10"  | 15' - 9"  |
|             | RFPI® 40     | 18' - 7"          | 16' - 11" | 16' - 0"   | 14' - 11" | 20' - 2"            | 18' - 5"  | 17' - 5"   | 16' - 2"  |
|             | RFPI® 60S    | 18' - 11"         | 17' - 4"  | 16' - 4"   | 15' - 3"  | 20' - 8"            | 18' - 10" | 17' - 9"   | 16' - 6"  |
| 11-7/8"     | RFPI® 70     | 19' - 9"          | 18' - 0"  | 17' - 0"   | 15' - 10" | 21' - 6"            | 19' - 7"  | 18' - 5"   | 17' - 2"  |
|             | RFPI® 20     | 20' - 6"          | 18' - 9"  | 17' - 9"   | 16' - 6"  | 22' - 4"            | 20' - 5"  | 18' - 10"  | 15' - 3"  |
|             | RFPI® 40S    | 21' - 5"          | 19' - 7"  | 18' - 6"   | 16' - 8"  | 23' - 5"            | 20' - 5"  | 18' - 7"   | 16' - 7"  |
|             | RFPI® 400    | 21' - 5"          | 19' - 7"  | 18' - 6"   | 17' - 3"  | 23' - 4"            | 21' - 4"  | 20' - 1"   | 17' - 9"  |
|             | RFPI® 40     | 22' - 1"          | 20' - 2"  | 19' - 0"   | 17' - 9"  | 24' - 1"            | 22' - 0"  | 20' - 8"   | 19' - 3"  |
| 14"         | RFPI® 60S    | 22' - 7"          | 20' - 8"  | 19' - 6"   | 18' - 2"  | 24' - 8"            | 22' - 6"  | 21' - 2"   | 19' - 7"  |
|             | RFPI® 70     | 23' - 7"          | 21' - 6"  | 20' - 3"   | 18' - 10" | 25' - 8"            | 23' - 5"  | 22' - 0"   | 19' - 9"  |
|             | RFPI® 90     | 26' - 6"          | 24' - 1"  | 22' - 8"   | 21' - 1"  | 28' - 10"           | 26' - 3"  | 24' - 8"   | 22' - 11" |
|             | RFPI® 20     | 23' - 4"          | 21' - 4"  | 20' - 2"   | 18' - 6"  | 25' - 5"            | 22' - 7"  | 19' - 2"   | 15' - 3"  |
|             | RFPI® 40S    | 24' - 4"          | 22' - 3"  | 21' - 0"   | 19' - 7"  | 26' - 7"            | 24' - 3"  | 22' - 3"   | 17' - 9"  |
| 16"         | RFPI® 400    | 24' - 4"          | 22' - 3"  | 21' - 0"   | 19' - 7"  | 26' - 7"            | 24' - 3"  | 22' - 3"   | 17' - 9"  |
|             | RFPI® 40     | 25' - 2"          | 22' - 11" | 21' - 8"   | 20' - 2"  | 27' - 5"            | 25' - 0"  | 23' - 7"   | 19' - 9"  |
|             | RFPI® 60S    | 25' - 9"          | 23' - 6"  | 22' - 2"   | 20' - 8"  | 28' - 0"            | 25' - 7"  | 24' - 1"   | 19' - 9"  |
|             | RFPI® 70     | 26' - 10"         | 24' - 5"  | 23' - 0"   | 21' - 5"  | 29' - 3"            | 26' - 7"  | 24' - 9"   | 19' - 9"  |
|             | RFPI® 90     | 30' - 1"          | 27' - 5"  | 25' - 9"   | 23' - 11" | 32' - 10"           | 29' - 10" | 28' - 1"   | 26' - 0"  |
| 18"         | RFPI® 40S    | 26' - 11"         | 24' - 3"  | 22' - 1"   | 19' - 9"  | 27' - 11"           | 24' - 2"  | 22' - 0"   | 19' - 8"  |
|             | RFPI® 400    | 27' - 0"          | 24' - 8"  | 23' - 4"   | 20' - 10" | 29' - 6"            | 26' - 4"  | 22' - 3"   | 17' - 9"  |
|             | RFPI® 40     | 27' - 10"         | 25' - 5"  | 24' - 0"   | 22' - 4"  | 30' - 4"            | 27' - 8"  | 24' - 9"   | 19' - 9"  |
|             | RFPI® 60S    | 28' - 6"          | 26' - 0"  | 24' - 7"   | 22' - 11" | 31' - 1"            | 28' - 4"  | 24' - 9"   | 19' - 9"  |
|             | RFPI® 70     | 29' - 9"          | 27' - 1"  | 25' - 6"   | 23' - 9"  | 32' - 5"            | 29' - 6"  | 24' - 9"   | 19' - 9"  |
| 20"         | RFPI® 90     | 33' - 4"          | 30' - 4"  | 28' - 7"   | 26' - 7"  | 36' - 5"            | 33' - 1"  | 31' - 1"   | 26' - 7"  |

### AVAILABLE RIGIDLAM® LVL SIZES



Not all sizes available in all markets. Contact your Roseburg representative for availability. The location and contact information for your regional EWP representative can be found on our company website [www.roseburg.com](http://www.roseburg.com) or by calling (800) 347-7260.

### RIGIDRIM® RIMBOARD DESIGN PROPERTIES

|                       | Thickness | Vertical Load (PLF) | Horizontal Load (PLF)  | Post Load (Pounds) | Lag Screw (1/2") (Pounds) |
|-----------------------|-----------|---------------------|------------------------|--------------------|---------------------------|
| OSB Rim Board         | 1-1/8"    | 4400                | 180 (8d box or common) | 3500               | 350                       |
| OSB Rim Board Plus    | 1-1/8"    | 4850                | 200 (8d box or common) | 3500               | 350                       |
| OSB Rim Board Seismic | 1-1/4"    | 5700                | 240 (8d common)        | 5900               | 400                       |
| 1.3E LVL Rim Board    | 1-1/2"    | 4900                | 215 (8d box or common) | 3500               | 400                       |



10599 Old Hwy 99 South | Dillard Oregon 97432  
tel 800-347-7260 | fax 541-679-2612  
web [www.Roseburg.com](http://www.Roseburg.com) | email [ewpsales@rfpc.com](mailto:ewpsales@rfpc.com)

RFPI®, RigidLam®, RigidRim®, Roseburg Framing System®, Quality Engineered Wood Products For Today's Builder® are registered trademarks of Roseburg Forest Products, Roseburg, Oregon. ©2012 Roseburg Forest Products

Effective November 2012

# THE COMPANY

For more than half a century, Roseburg has produced quality wood products for customers throughout North America and is recognized as a major supplier of wood products. Our natural resource base, state-of-the-art manufacturing facilities, talented and experienced associates, and reputation for quality products and superior customer service have been key elements to our success.

Integrated manufacturing, wide variety of wood products, and approximately 600,000 acres of forestlands throughout Southern Oregon and Northern California are assets that will support our strategic growth plans well into the 21<sup>st</sup> Century.

## EFFICIENT SINGLE SOURCE PRODUCER



### ENVIRONMENTAL STEWARDS

Conscientious stewardship of our natural resources and environment is an important principle defined in our core set of values. We believe it is more than just a value statement, it is our cultural behavior developed because of an understanding that the forest and its biodiversity are our lifeblood. We recognize that the global demand for wood products is growing. We are balancing that need with the harvesting and processing of natural resources. Roseburg holds itself, and its vendors to high environmental stewardship expectations and is committed to: sustainable forest management; protecting biodiversity; setting and achieving efficient goals; tracking and improving performance; and being good industry role models.

### ENGINEERED WOOD PRODUCTS

Roseburg's plant is one of North America's largest Engineered Wood Products (EWP) facilities, covering nearly 70 acres, with over 750,000 sq. ft. of manufacturing space. Every part of the facility is state-of-the-art, producing quality Engineered Wood Products. It is a complete processing facility, from

drying and grading veneer to final packaging and shipment. As with every other product Roseburg produces, each step in the EWP manufacturing process is monitored to ensure that the highest quality control standards are maintained.



Roseburg's signature trademarks of vertical integration capabilities and cutting-edge manufacturing practices help ensure that quality Engineered Wood Products are produced. Our huge production capacity, complete product offering, our focus on service and product availability, commitment to the EWP business, and acceptability of the product by builders and homeowners all translate into significant advantages for our customers.



### ROSEBURG FRAMING SYSTEM®

The Roseburg Framing System® consists of: RFP® Joists used in floor and roof construction; RIGIDLAM® LVL which is used for headers, beams, columns, studs and stair stringers; and RIGIDRIM® Rimboard. All of the components are engineered to the industry's highest standards to help contractors build solid, durable, and better performing framing systems compared to ordinary dimension lumber.

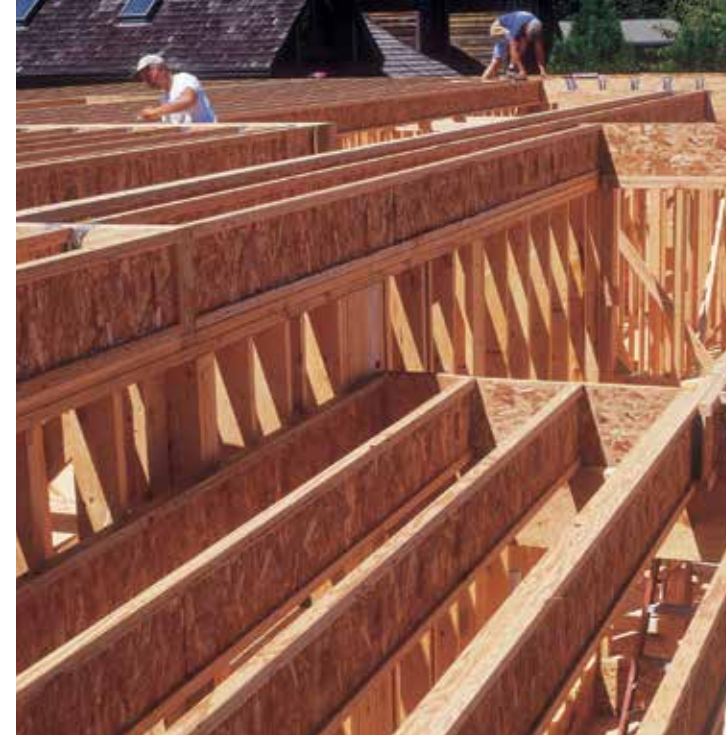


Roseburg is a supporting member of APA – The Engineered Wood Association and its related corporation, Engineered Wood Systems (EWS). Roseburg also uses APA as its recognized 3rd party quality assurance agency. Code approvals, literature and various software (all of which can be downloaded from the Roseburg website at [www.roseburg.com](http://www.roseburg.com)) are available to aid specifiers in quickly and easily selecting the proper product for each application. The information in these resources will also help builders simplify the process of choosing and properly installing I-Joists and LVL in residential applications. All engineered wood products described in this document meet or exceed the APA-EWS standards.

The Roseburg Framing System®, combined with the other wood framing products produced by Roseburg, offers one of the most complete framing packages available from a single manufacturing supplier today.

### CUSTOMER SUPPORT

Deeply ingrained in Roseburg's statement of core values is the phrase, "We practice integrity in all that we say and do." A new customer quickly discovers that service is a high priority at Roseburg Forest Products. As a company, we have always maintained a well-trained and knowledgeable sales, manufacturing, and support staff. In the engineered wood products division, our team of specialists focus on providing the highest level of EWP product quality, knowledge, and service to the marketplace.



#### FEATURES

Major producer of wood products

A legacy of delivering quality wood products to the market

Our EWP products meet or exceed Roseburg's & APA's high quality assurance standards

One of the most complete framing packages available

Committed to delivering quality engineered wood products on time, every time

Experienced sales, technical, engineering, & customer service assistance

#### BENEFITS

Strength of position as a supplier who has long-term staying power

Product availability

High quality product with predictable performance

One stop shopping with RFP® Joists, RIGIDLAM® LVL, and RIGIDRIM® Rimboard

Dependable supply of engineered wood products

Roseburg will help you get the job done quickly and efficiently

FOR MORE INFORMATION CALL TODAY!

800-347-7260

[ewpsales@rfpc.com](mailto:ewpsales@rfpc.com)