

Coarse Finish

100% acrylic polymer finish coat

Product Bulletin

DESCRIPTION

Factory-mixed, 100% acrylic polymer finish coat. COARSE Finish has a heavy “worm-holed” or rilled appearance, which is achieved by the random aggregate sizes in the finish. The “worm-holed” look can be circular, random, vertical or horizontal. (COARSE Finish is similar to Senergy’s Classic Finish, except for the larger aggregate which creates a larger “worm-holed” texture.)

PACKAGING

31.7-kg per 19-liter pail
(70-lbs per 5-gallon pail)

COVERAGE

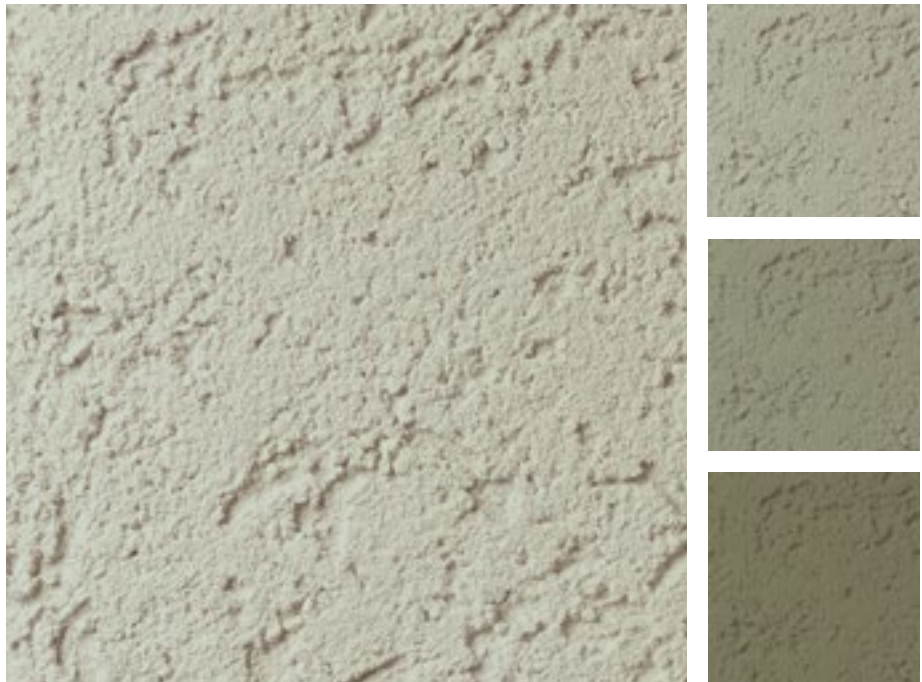
(Approximate) 8.3 m² (90 ft²)
per pail

COLORS

Available in a wide variety of standard and custom colors

TECHNICAL SUPPORT

Consult our Technical Services Department for specific recommendations concerning all other applications. Consult the web site, www.senergy.basf.com for additional information and for updated literature.



USES

1. COARSE Finish provides an aesthetically pleasing surface color and texture for the SENERGY Wall Systems.
2. Can also be utilized as a textured Finish for poured concrete or unit masonry, conventional stucco, SENERGY STUCCO Wall System, SENERGY Cement-Board Stucco, certain insulating concrete forms, and interior veneer plaster or gypsum wallboard.

Features	Benefits
100% Acrylic polymer chemistry	Long-term durability and weather resistance
Integral color	Reduced maintenance and recoating
Weather resistant	Repels water and resists wind-driven rain
Seals existing, non-moving hairline cracks	Protects
Breathable	Doesn't blister, peel or flake

Coarse Finish

MIXING

1. Thoroughly mix the factory-prepared COARSE Finish with a mixer until thoroughly blended.
2. A small amount of clean, potable water may be added to adjust workability.
3. Additives are not permitted.
4. Close container when not in use.
5. Clean tools with soap and water immediately after use.

APPLICATION

1. Substrate shall be dry, clean, sound and free of releasing agents, paint or other residue or coatings. Verify substrate is flat, and free of fins or planar irregularities greater than 6.4 mm in 3 m (1/4" in 10').
2. Apply COARSE Finish directly to the Senergy Base Coat/ Reinforcing Mesh with a clean, stainless steel trowel.
3. Apply and level COARSE Finish during the same operation to minimum obtainable thickness consistent with uniform coverage.
4. Maintain a wet edge on COARSE Finish by applying and texturing continually over the wall surface.
5. Work COARSE Finish to corners, joints or other natural breaks, and do not allow material to set up within an uninterrupted wall area.
6. Float COARSE Finish to achieve final texture.

LIMITATIONS

1. Protect Senergy materials during transportation and installation to avoid physical damage.
2. Store Senergy materials in a cool, dry place protected from freezing. Store at no less than 4°C (40°F). Protect from extreme heat and direct sunlight. Shelf life is two years when unopened and stored as directed.
3. Do not apply Senergy materials in ambient temperatures below 4°C (40°F). Provide supplementary heat during installation and drying period (at least 24 hours after installation and until dry) when temperatures less than 4°C (40°F) prevail.
4. Do not apply Senergy materials to frozen surfaces.
5. Samples of COARSE Finish are available from Senergy for color approval only. Samples for job approval must be made in the field by the applicator, and approved prior to ordering.

HEALTH, SAFETY AND ENVIRONMENTAL

Read, understand and follow all Safety Data Sheets and product label information for this product prior to use. The SDS can be obtained by visiting www.senergy.basf.com. Use only as directed.

WARRANTY

BASF warrants this product to be free from manufacturing defects and to meet the technical properties on the current Product Bulletin, if used as directed within shelf life. Satisfactory results depend not only on quality products but also upon many factors beyond our control. BASF MAKES NO OTHER WARRANTY OR GUARANTEE, EXPRESS OR IMPLIED, INCLUDING WARRANTIES OF MERCHANTABILITY OR FITNESS FOR A PARTICULAR PURPOSE WITH RESPECT TO ITS PRODUCTS. The sole and exclusive remedy of Purchaser for any claim concerning this product, including but not limited to, claims alleging breach of warranty, negligence, strict liability or otherwise, is shipment to purchaser of product equal to the amount of product that fails to meet this warranty or refund of the original purchase price of product that fails to meet this warranty, at the sole option of BASF. In the absence of an extended warranty issued by BASF, any claims concerning this product must be received in writing within one (1) year from the date of shipment and any claims not presented within that period are waived by Purchaser. BASF WILL NOT BE RESPONSIBLE FOR ANY SPECIAL, INCIDENTAL, CONSEQUENTIAL (INCLUDING LOST PROFITS) OR PUNITIVE DAMAGES OF ANY KIND.

Purchaser must determine the suitability of the products for the intended use and assumes all risks and liabilities in connection therewith. This information and all further technical advice are based on BASF's present knowledge and experience. However, BASF assumes no liability for providing such information and advice including the extent to which such information and advice may relate to existing third party intellectual property rights, especially patent rights, nor shall any legal relationship be created by or arise from the provision of such information and advice. BASF reserves the right to make any changes according to technological progress or further developments. The Purchaser of the Product(s) must test the product(s) for suitability for the intended application and purpose before proceeding with a full application of the product(s). Performance of the product described herein should be verified by testing and carried out by qualified experts.