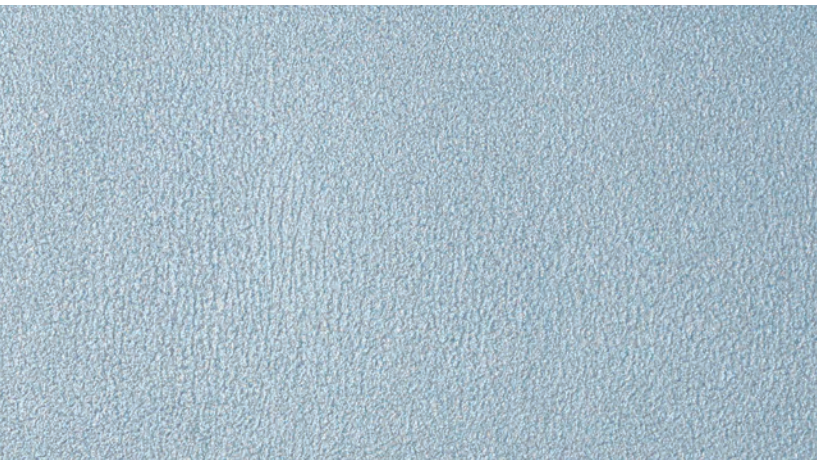
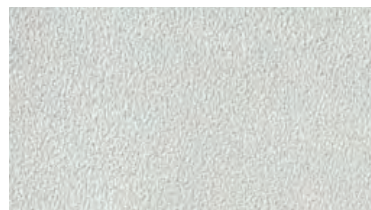


Metallic Color Coat

Factory-mixed, 100% acrylic polymer coating



Slate Blue



Dove Gray



Patina Green



Pewter



Copper

Uses

1. To provide a unique metal panel appearance over surfaces prepared with Senergy® SKIM COAT in Senerflex®, Senergy Cement-Board Stucco™, all Senergy Surfacing Systems and interior veneer plaster or gypsum wall board applications.
2. For graphic highlights or to change the color of any Senergy Wall System or other compatible EIFS Finish.
3. For use as a coating over Senergy textured Finishes in all applications for which Senergy Finishes are approved; e.g. EIFS, stucco, Cement-Board Stucco, all Senergy Surfacing Systems, and poured concrete or unit masonry and interior veneer plaster or gypsum wallboard applications.

Technical Information

Consult the BASF Wall Systems Technical Services Department for specific recommendations concerning all other applications. Consult the Senergy website, www.senergy.basf.com, for additional information about products and systems and for updated literature.

Preparation

The METALLIC COLOR COAT must be strained with a paint strainer/filter prior to use in a spray application.

Mixing

1. Mix the contents of the METALLIC COLOR COAT pail with a low speed drill and paddle mixer until thoroughly blended.
2. A small amount of clean, potable water may be added to adjust workability, but is generally unnecessary since a thick consistency is desired.
3. Additives are not permitted.
4. Close container when not in use.
5. Clean tools with soap and water immediately after use.

Colors

Available in 5 standard color and custom colors

Packaging

18.1 kg per 19-liter pail
(40 lbs per 5-gallon pail)

Coverage

Approximately 1000 ft² (92.9 m²) for the first coat, 1200 ft² (111.48 m²) for the second coat and 1400 ft² (130.06 m²) if a third coat is requested. Varies depending upon texture of surface over which it is being applied.

Metallic Color Coat

Application

To replicate the appearance of a metal panel:

1. Apply SKIM COAT over wall system to be covered with METALLIC COLOR COAT according to Senergy SKIM COAT application procedures described in SKIM COAT product bulletin.
2. When SKIM COAT application is completed to satisfactory surface flatness, surface must be clean, dry and free of contaminants. As required, rinse wall thoroughly with clean water and allow to dry.
3. Apply TINTED PRIMER to SKIM COAT using a 21/1000–25/1000 reversible tip and airless spray equipment.
4. Apply the first coat of Senergy METALLIC COLOR COAT using a 31/1000–35/1000 reversible tip and airless spray equipment.
5. The METALLIC Coating must be applied in multiple layers of thin coats, always keeping a wet edge.
6. Repeat as necessary, using typical painting practices and protecting each coat from debris and precipitation while drying.

Graphics/color change:

1. Cover surface to be coated with METALLIC COLOR COAT with a layer of Senergy Base Coat and Reinforcing Mesh according to Senergy specifications and application procedures for the Base Coat.
2. If METALLIC COLOR COAT is used over a Senergy Finish, apply the Finish according to specifications and application procedures for the Finish.
3. Surface must be clean, dry and free of contaminants. As required, rinse wall thoroughly with clean water and allow to dry.
4. Apply METALLIC COLOR COAT with a 10 mm (3/8") nap roller or airless spray equipment. If necessary, cut in the edges with a high-quality, latex-type paint brush.
5. Brush or roll out in all directions, maintaining a wet edge at all times.
6. METALLIC COLOR COAT must be worked continuously until a uniform appearance is obtained over the entire wall surface.
7. Allow the first coat to dry prior to application of the second coat.

Limitations

1. Protect Senergy materials during transportation and installation to avoid physical damage.
2. Store Senergy materials in a cool, dry place protected from freezing. Store at no less than 4°C (40°F). Protect from extreme heat and direct sunlight. Shelf life is two years when unopened and stored as directed.
3. Do not apply Senergy materials in ambient temperatures below 4°C (40°F). Provide supplementary heat during installation and drying period (at least 24 hours after installation and until dry) when temperatures less than 4°C (40°F) prevail.
4. Protect work from precipitation until dry.
5. Do not apply Senergy materials to frozen surfaces.

Health and Safety

Caution

Contains ethylene glycol, ester alcohol.

Risk

May cause eye, skin or respiratory irritation. Ingestion may cause irritation. Contains crystalline silica. NTP and IARC recognize respirable crystalline silica as a suspected human carcinogen. The exposure to crystalline silica during the normal use of this product will be little or none.

Precautions

Avoid contact with eyes, skin and clothing. Use with adequate ventilation. DO NOT take internally. Wash thoroughly after handling. Use impervious gloves, eye protection and if the TLV is exceeded or if used in a poorly ventilated area, use NIOSH/MSHA approved respiratory protection in accordance with Federal, state and local requirements. Keep container closed when not in use. All label warnings must be observed until container is commercially cleaned or reconditioned.

First Aid

1. For eye contact, flush eyes with water, lifting upper and lower lids occasionally for 15 minutes. SEEK MEDICAL ATTENTION.
2. For skin contact, wash affected areas with soap and water. If irritation persists, SEEK MEDICAL ATTENTION. Remove and wash contaminated clothing.
3. If swallowed, do not induce vomiting. If conscious, drink plenty of water. If a person feels unwell or symptoms of skin irritation appear, consult a physician. If a person vomits, place him/her in the recovery position. Never give anything by mouth to an unconscious person.
4. If inhaled, remove victim from exposure. If difficulty with breathing, administer oxygen. If breathing has stopped administer artificial respiration, preferably mouth-to-mouth. SEEK MEDICAL ATTENTION.

Read Material Safety Data Sheet before using this product.

Proposition 65

This product contains materials listed by the state of California known to cause cancer, birth defects or other reproductive harm.

VOC Content

160 g/l, or 1.34 lbs/gal less water and exempt solvents. **For medical emergencies only call Chemtrec at (800) 424-9300.**

Note

BASF Wall Systems is an operating unit of BASF Corporation (herein referred to as "BASF Wall Systems")

Disclaimer

This information and all further technical advice are based on BASF Wall Systems' present knowledge and experience. However, BASF assumes no liability for providing such information and advice including the extent to which such information and advice may relate to existing third party intellectual property rights, especially patent rights. In particular, BASF Wall Systems disclaims any and all CONDITIONS AND WARRANTIES, WHETHER EXPRESS OR IMPLIED, INCLUDING THE IMPLIED WARRANTIES OF FITNESS FOR A PARTICULAR PURPOSE OR MERCHANTABILITY. BASF WALL SYSTEMS SHALL NOT BE RESPONSIBLE FOR CONSEQUENTIAL, INDIRECT OR INCIDENTAL DAMAGES (INCLUDING LOSS OF PROFITS) OF ANY KIND. BASF Wall Systems reserves the right to make any changes according to technological progress or further developments. It is the customer's responsibility and obligation to carefully inspect and test any incoming goods. Performance of the product(s) described herein should be verified by testing and carried out only by qualified experts. It is the sole responsibility of the customer to carry out and arrange for any such testing. Reference to trade names used by other companies is neither a recommendation, nor an endorsement of any product and does not imply that similar products could not be used.



Scan this code to find the most current Senergy literature

BASF Wall Systems

3550 St. Johns Bluff Road South
Jacksonville, FL 32224-2614
Phone 800 • 221 • 9255
Fax 904 • 996 • 6300
www.senergy.basf.com

©2012 BASF Corporation
Printed in U.S.A. 06/12