

# Senerflex<sup>®</sup> Flashed Opening Design

TECHNICAL BULLETIN  
1017739

**FLASHINGS**

Requirements for the flashing system are the responsibility of the design professional as part of the overall building envelope and must be included in the appropriate sections of the project specifications.

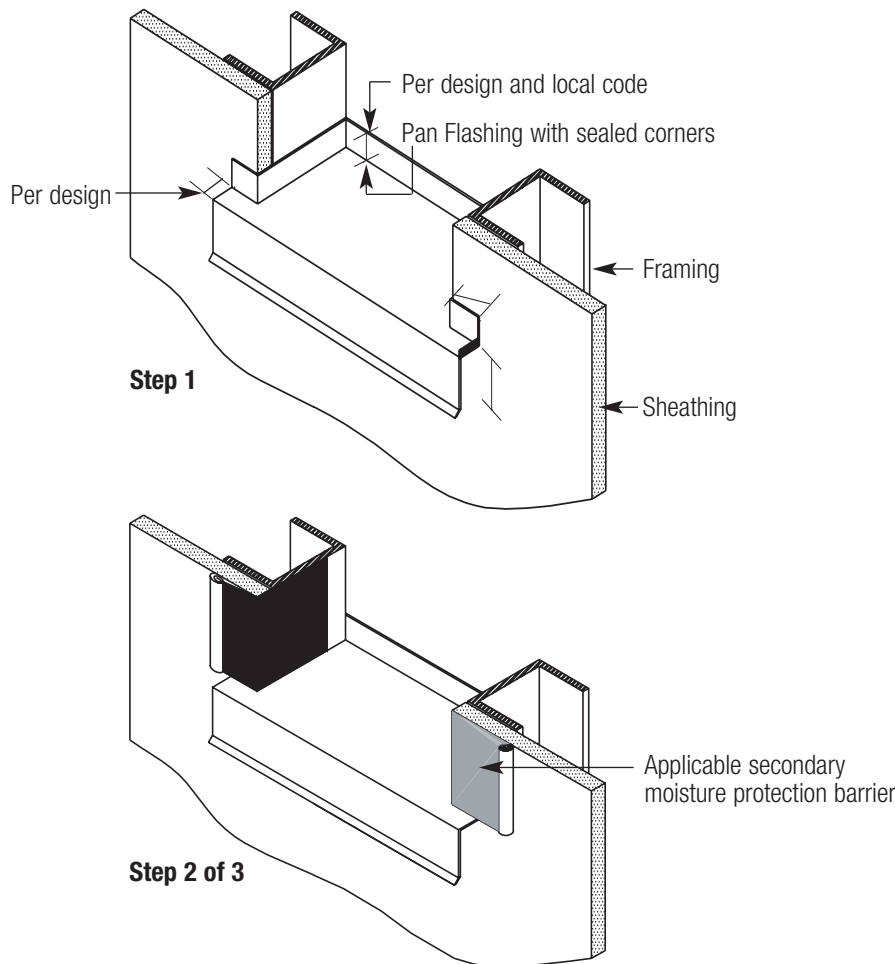
Flashings at openings or penetrations are typically located at areas such as windows, doors, louvers, decks, etc. Flashings should be designed and constructed of accepted flashing materials in accordance with industry recognized practices, methods, as well as code requirements.

These Senergy typical details represent typical and/or general conditions of flashed openings/ penetrations and are offered as a guide to assist the designer, specifier, installer and/or owner. The Senerflex Flashed Opening Design does not address flashings at locations such as tops of walls, etc.

Flashing design should include opening protection integrated with flashings to provide closure capable of containing incidental moisture collected from local sources (openings/penetrations) and redirecting it to the building exterior. Guidelines for opening protection products and installation are included in Senergy *Secondary Moisture Protection Barrier Guidelines for Senerflex Wall Systems* technical bulletin.

**DESCRIPTION**

The Senerflex Flashed Opening Design incorporates the features and benefits of the Senerflex Classic PB Wall System. Flashings at penetrations/ openings provide localized or source drainage to evacuate incidental moisture collected from penetrations/ openings and redirect it to the building exterior.



# Senerflex® Flashed Opening Design

## TEST RESULTS

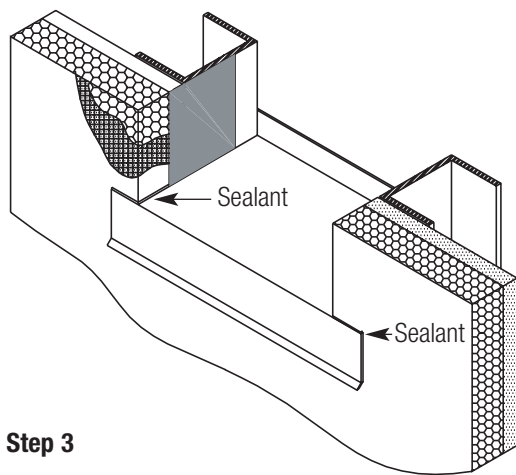
The Senerflex Wall System with various flashed opening/penetration details have tested in accordance with ASTM E331-96 as well as meeting the provisions in chapter 14 section 1403 of the 2003 IBC. The system successfully passed the two hour evaluation period at 6.24 psf without any signs of water penetration. Contact BASF Wall Systems for copies of complete test results including detail and test configurations.

## GENERAL

The Senerflex Flashed Opening Design may also be used in conjunction with other Senerflex Wall System Designs (Secondary Weather Barrier, Channeled Adhesive, Channeled Insulation, Adhered Mat and Pressure Equalized). For additional information, see Senergy product bulletins, specifications, details, etc. Consult BASF Wall Systems for conditions not shown. The responsibility remains with the design professional for the design of any system.

## TECHNICAL INFORMATION

Consult the BASF Wall Systems Technical Services Department for specific recommendations concerning all other applications. Consult the Senergy website, [www.senergy.basf.com](http://www.senergy.basf.com), for additional information about products and systems and for updated literature.



Step 3

## Note

BASF Wall Systems is an operating unit of BASF Construction Chemicals, LLC. (herein after referred to as "BASF Wall Systems")

## Residential Policy

On one and two-family residential framed construction, BASF Wall Systems requires that the wall system selected be one that includes provisions for water drainage. The choices include Senturion® line of water drainage EIFS, commercial Senerflex® Channeled Adhesive or Channeled Insulation Design, Senergy Stucco Wall System, and Senergy Cement-Board Stucco™ Systems. There are no exceptions to this policy. Under no circumstances will BASF Wall Systems warrant the use of any other system on this type of construction without expressed written authorization from BASF Wall Systems [Residential construction using EIFS on masonry (CMU) or poured concrete does not require the additional water drainage provisions described above. Senergy Exterior Surfacing Systems for insulating concrete forms are also acceptable.] See the Senergy Residential Policy Bulletin for a more detailed discussion of this topic. Consult BASF Wall Systems Technical Services Department for specific recommendations concerning all other applications. Consult the Senergy website, [www.senergy.basf.com](http://www.senergy.basf.com) for additional information about products and systems and for updated literature.

## Disclaimer

This information and all further technical advice are based on BASF Wall Systems' present knowledge and experience. However, BASF assumes no liability for providing such information and advice including the extent to which such information and advice may relate to existing third party intellectual property rights, especially patent rights. In particular, BASF Wall Systems disclaims any and all CONDITIONS AND WARRANTIES, WHETHER EXPRESS OR IMPLIED, INCLUDING THE IMPLIED WARRANTIES OF FITNESS FOR A PARTICULAR PURPOSE OR MERCHANTABILITY. BASF WALL SYSTEMS SHALL NOT BE RESPONSIBLE FOR CONSEQUENTIAL, INDIRECT OR INCIDENTAL DAMAGES (INCLUDING LOSS OF PROFITS) OF ANY KIND. BASF Wall Systems reserves the right to make any changes according to technological progress or further developments. It is the customer's responsibility and obligation to carefully inspect and test any incoming goods. Performance of the product(s) described herein should be verified by testing and carried out only by qualified experts. It is the sole responsibility of the customer to carry out and arrange for any such testing. Reference to trade names used by other companies is neither a recommendation, nor an endorsement of any product and does not imply that similar products could not be used.

## BASF Wall Systems

3550 St. Johns Bluff Road South  
Jacksonville, FL 32224-2614  
Phone 800 • 221 • 9255  
Fax 904 • 996 • 6300  
[www.senergy.basf.com](http://www.senergy.basf.com)