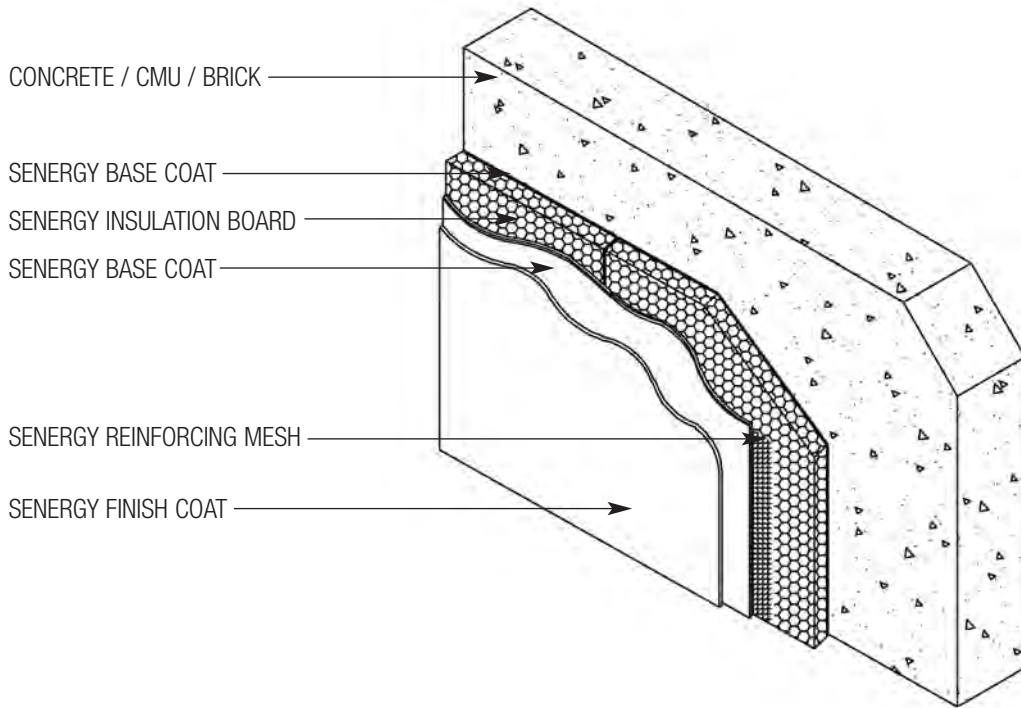


Renovation with EIFS

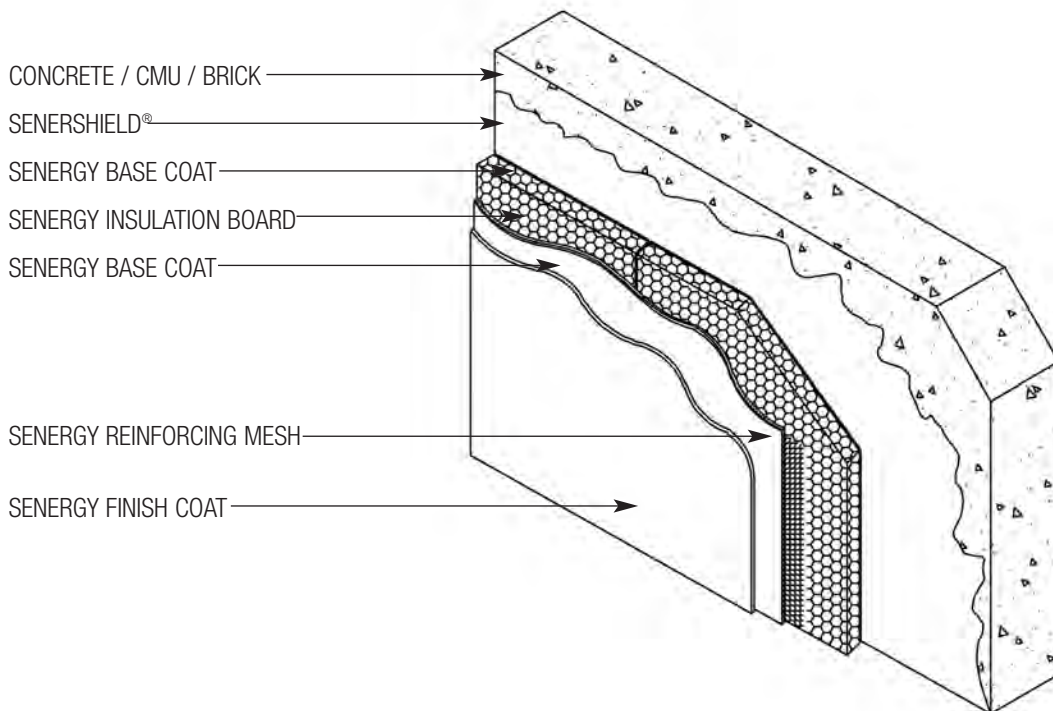


TYPICAL DETAILS **1023535**

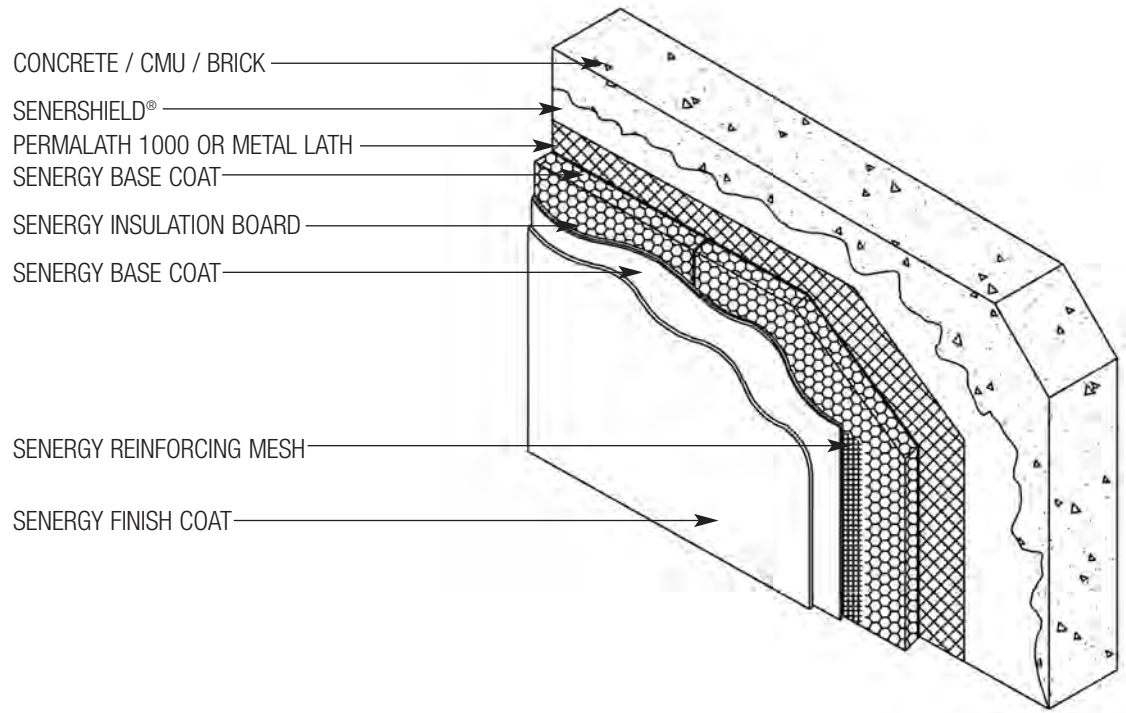
1. EIFS Renovation Option 1
2. EIFS Renovation Option 2
3. EIFS Renovation Option 3
4. EIFS Renovation Option 4
5. Typical Aesthetic Groove
6. Typical Insulation Boards/
Reinforcing Mesh Application
at Openings
7. Typical Window Head (Flush)
8. Typical Window Head
(Recessed)
9. Window Jamb (Flush)
10. Window Jamb (Recessed)
11. Typical Window Sill (Flush)
12. Typical Window Sill (Recessed)
13. Typical Metal Coping
14. Typical EPS Parapet Cap
15. Typical Expansion Joint
16. Termination to Dissimilar
Material
17. Termination at Soffit/Gable End
18. Typical Pipe Penetration
19. Typical Corner Mesh
Application with Flexguard 4,
Intermediate 6 or
Intermediate 12
20. Typical Corner Mesh
Application with Strong 15 or
Hi-Impact 20
21. Typical Light Fixture
22. Typical Termination at
Foundation
23. Typical Termination at
Foundation (Flush)
24. Typical Kickout Flashing



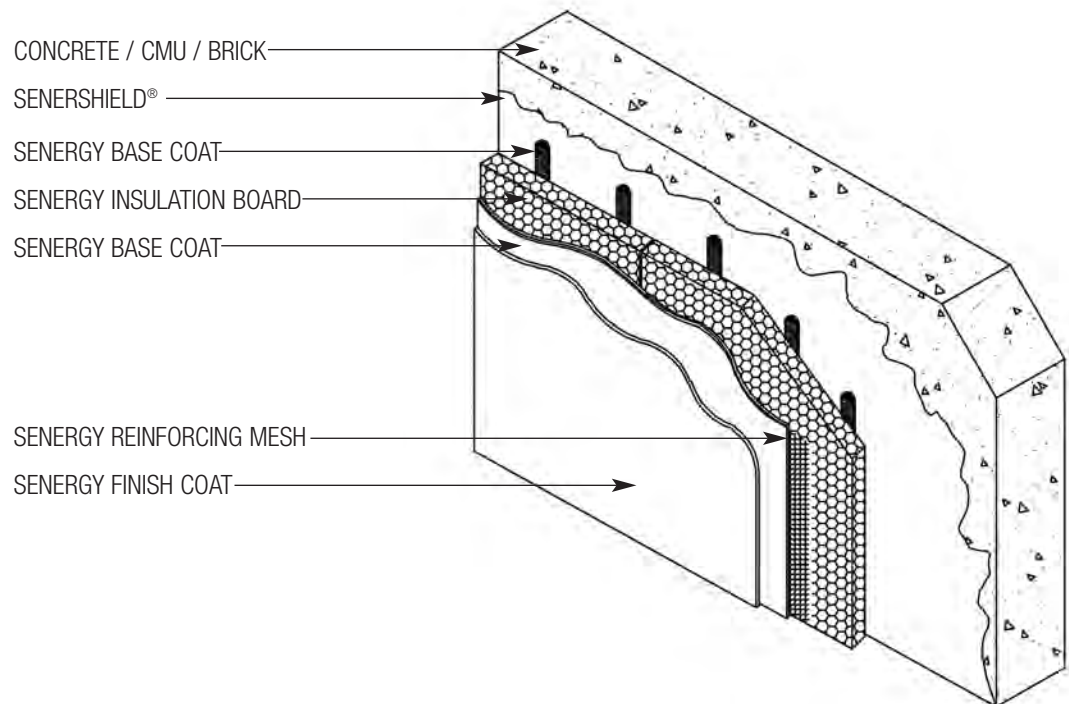
RDE-01 EIFS RENOVATION OPTION 1 (ISOMETRIC VIEW)



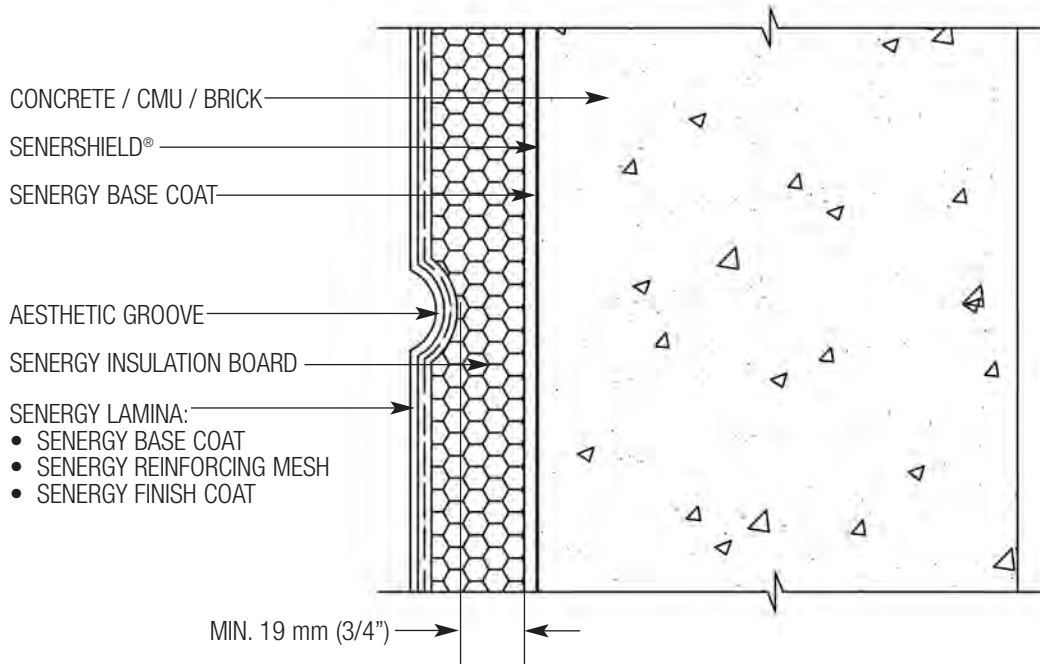
RDE-01 EIFS RENOVATION OPTION 2 (ISOMETRIC VIEW)



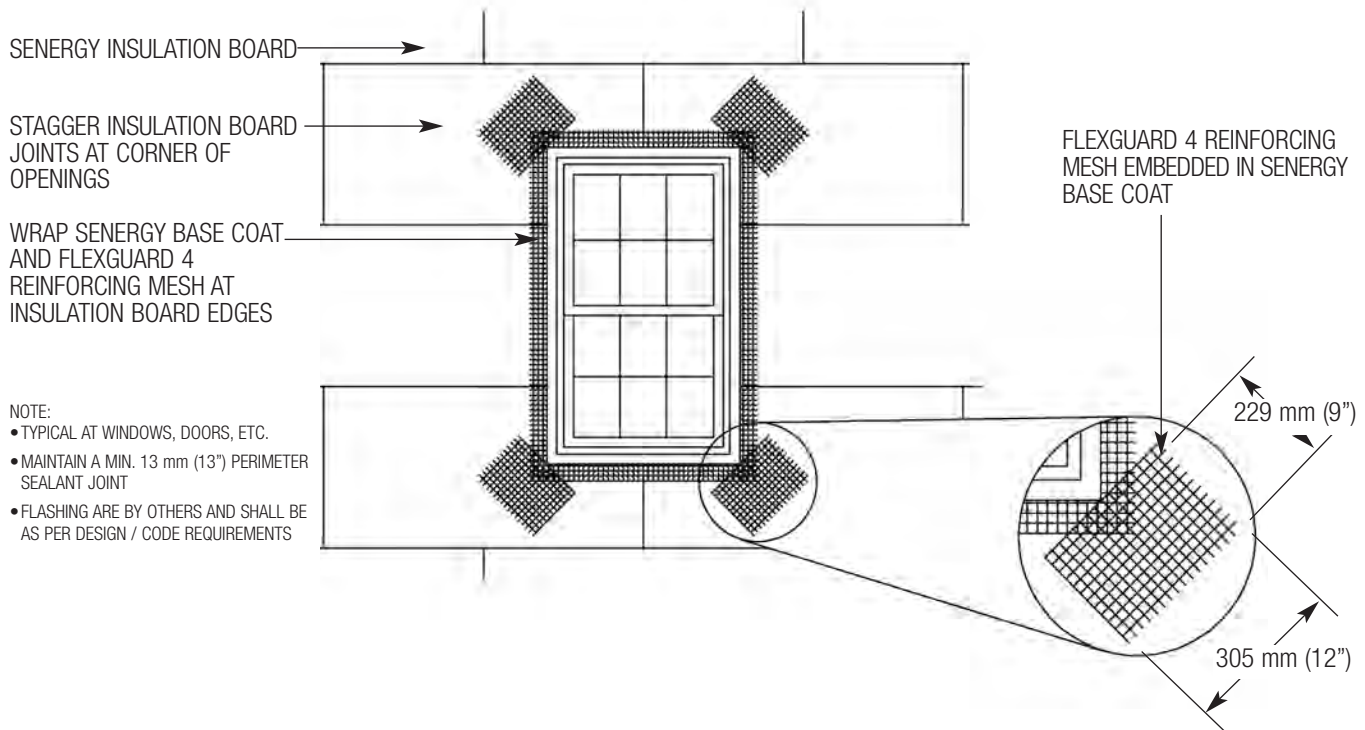
RDE-01 EIFS RENOVATION OPTION 3 (ISOMETRIC VIEW)



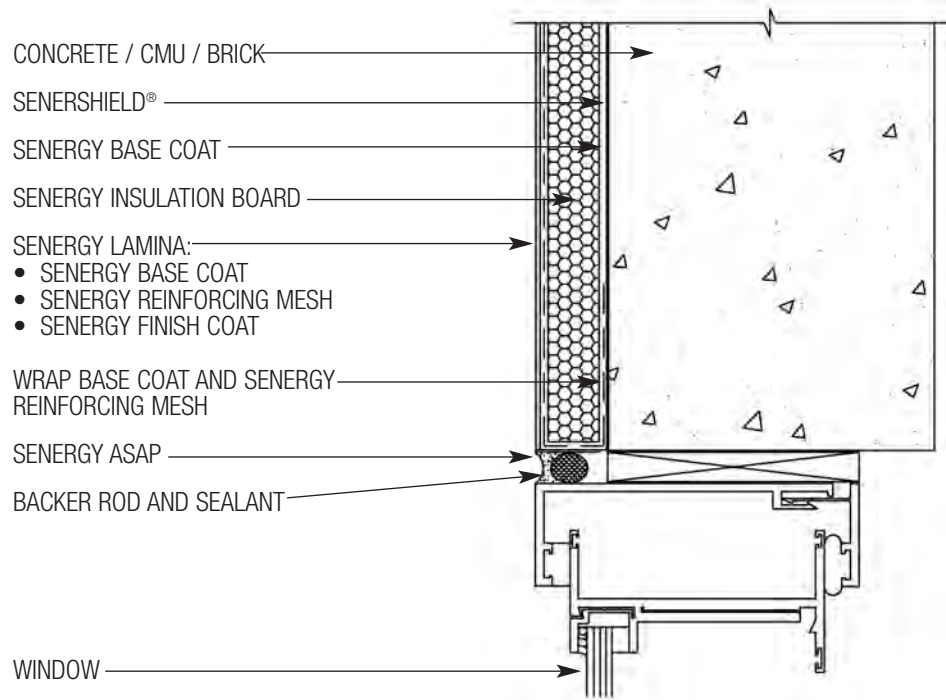
RDE-01 EIFS RENOVATION OPTION 4 (ISOMETRIC VIEW)



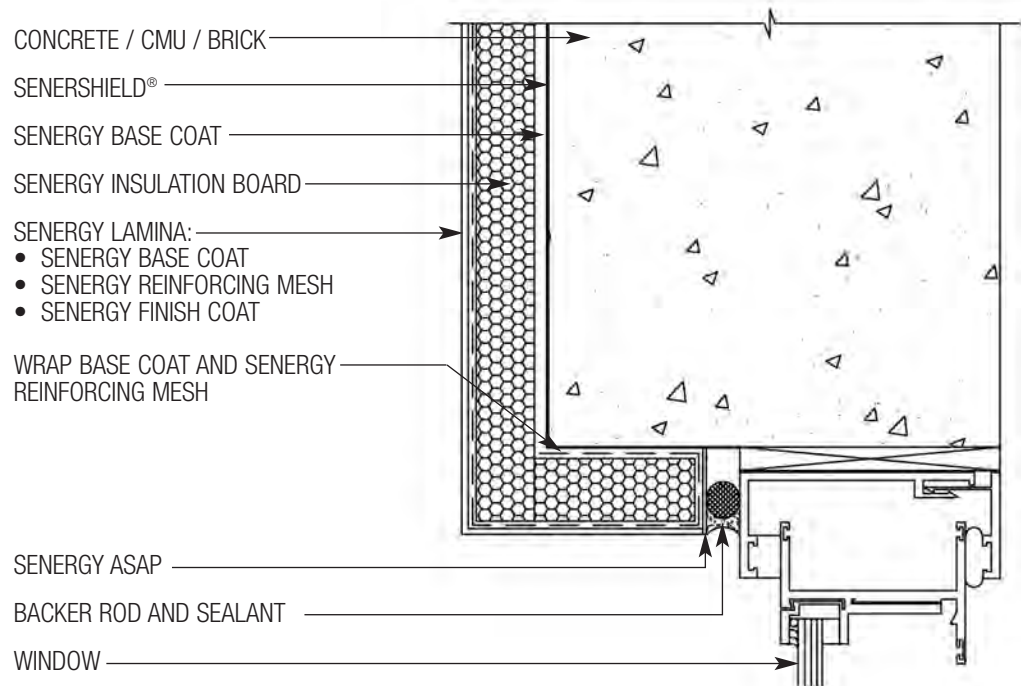
RDE-05 TYPICAL AESTHETIC GROOVE PLAN VIEW



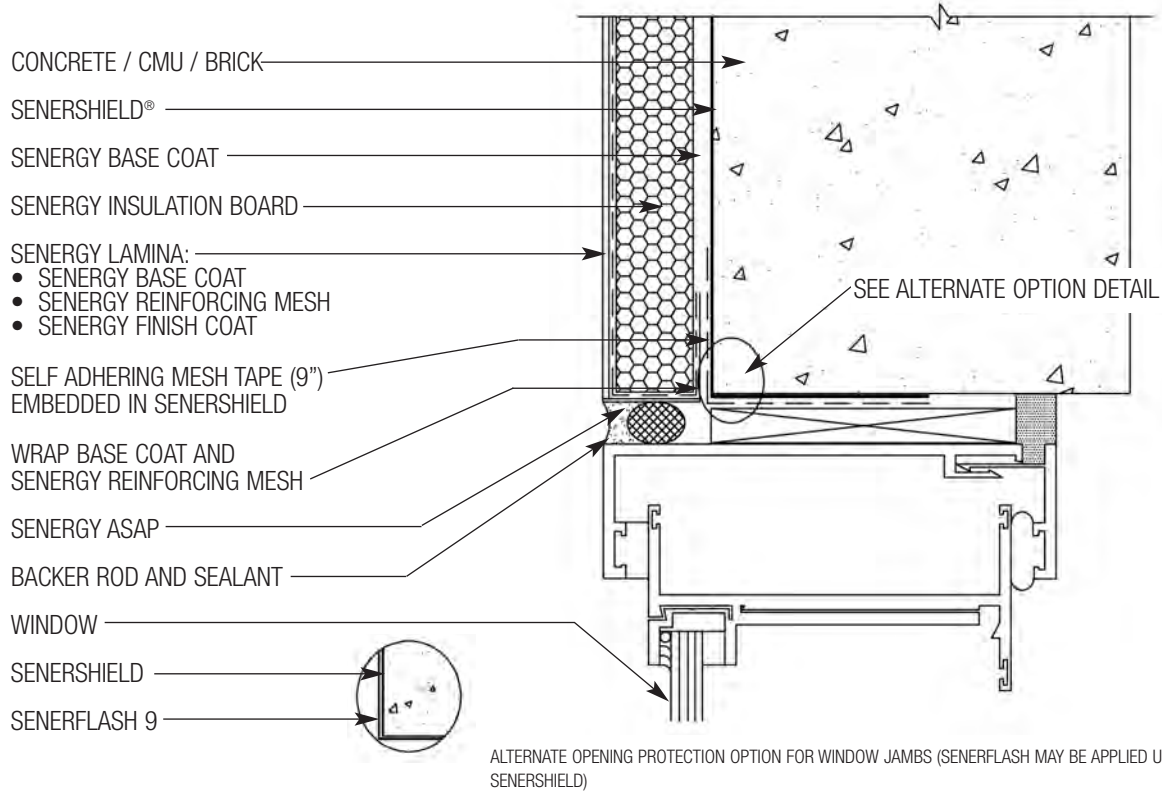
RDE-06 TYPICAL INSULATION BOARDS/REINFORCING MESH APPLICATION AT OPENINGS



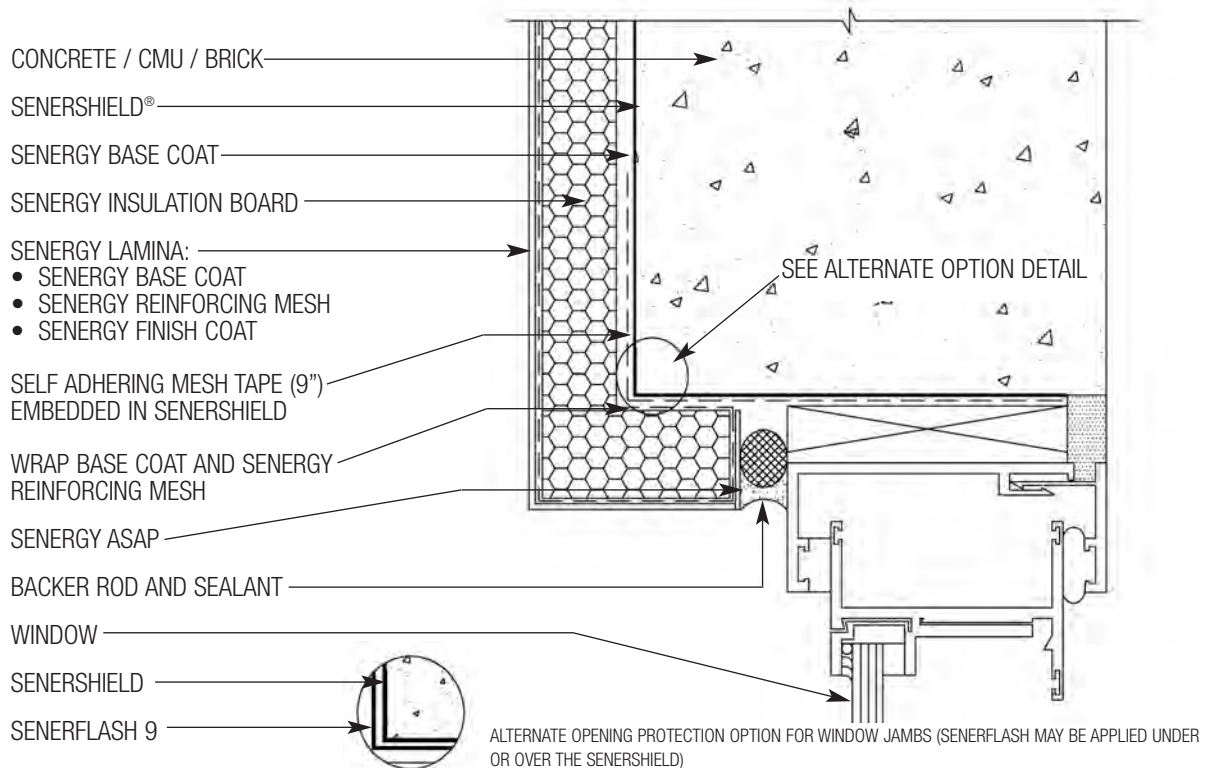
RDE-07 TYPICAL WINDOW HEAD (FLUSH)



RDE-08 WINDOW HEAD (RECESSED)

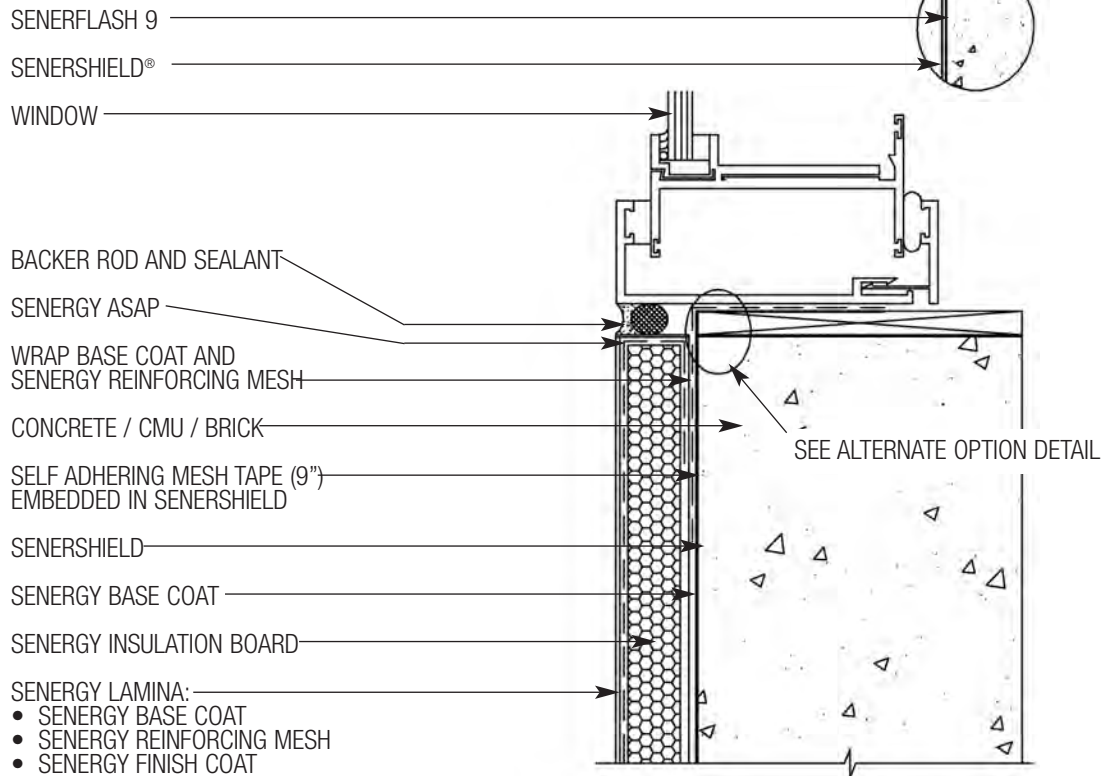


RDE-09 WINDOW JAMB DETAIL FLUSH PLAN VIEW

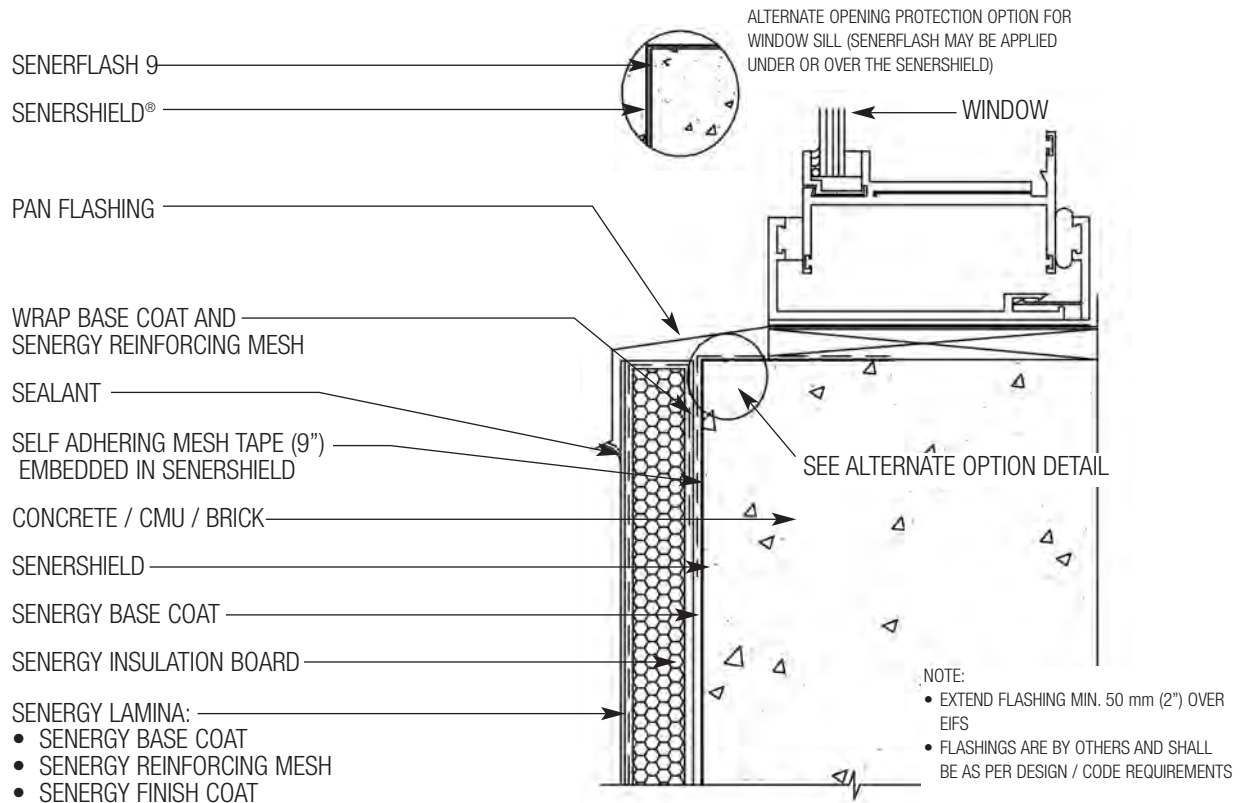


RDE-10 WINDOW JAMB DETAIL RECESSED PLAN VIEW

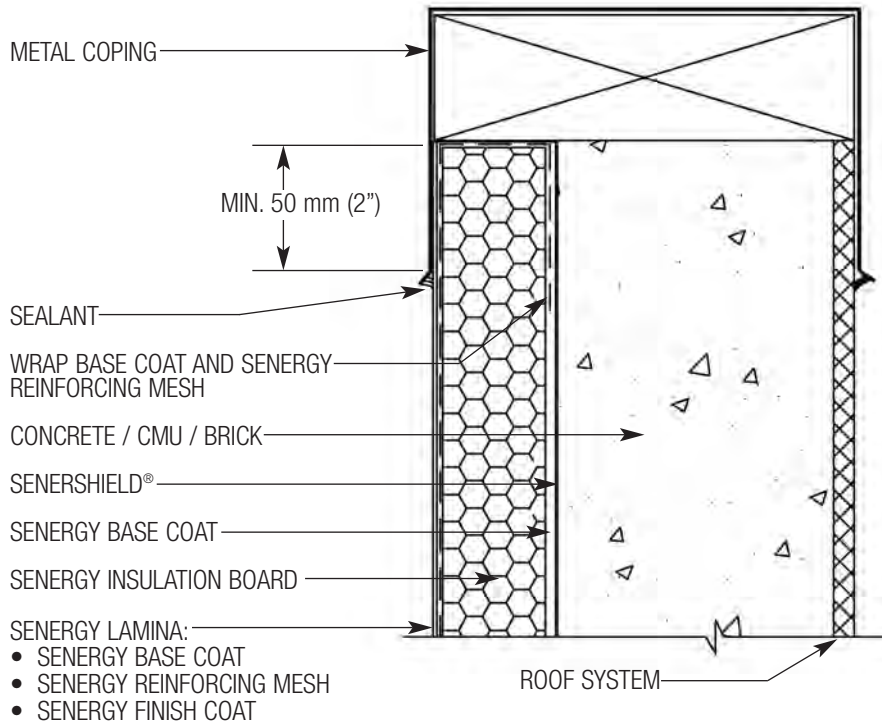
ALTERNATE OPENING PROTECTION OPTION FOR WINDOW SILL (SENERFLASH MAY BE APPLIED UNDER OR OVER THE SENERSHIELD)



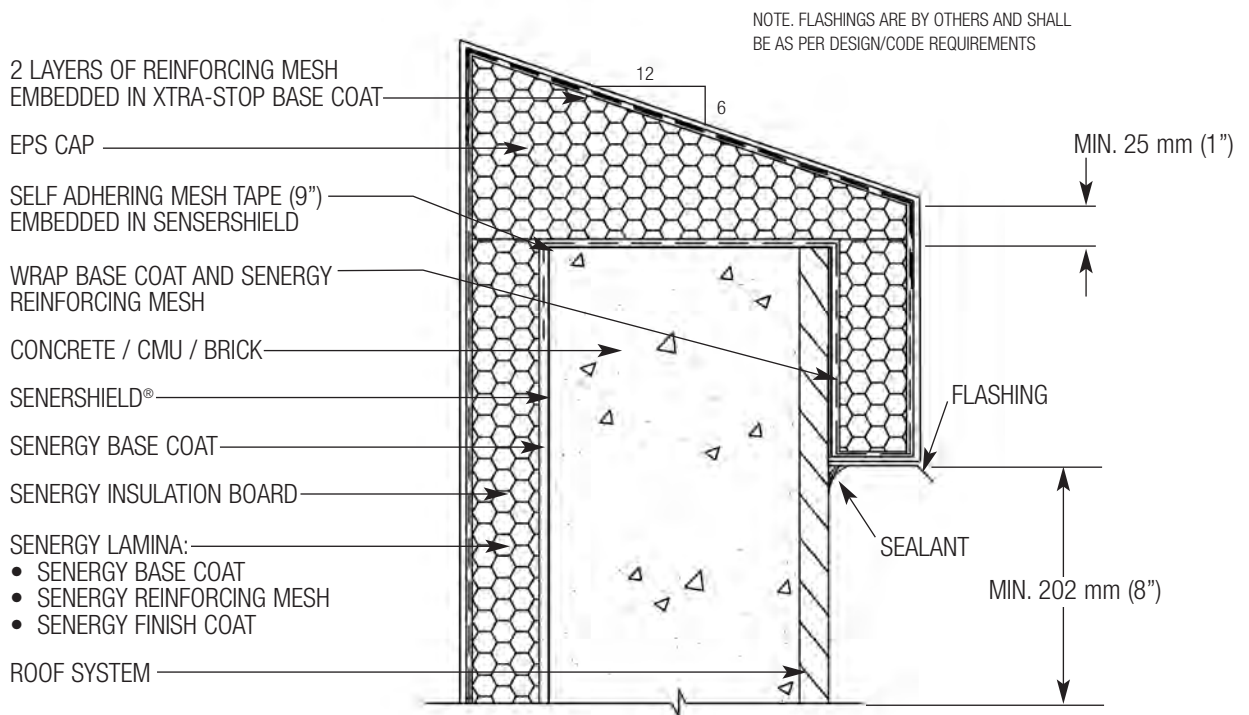
RDE-11 TYPICAL WINDOW SILL FLUSH



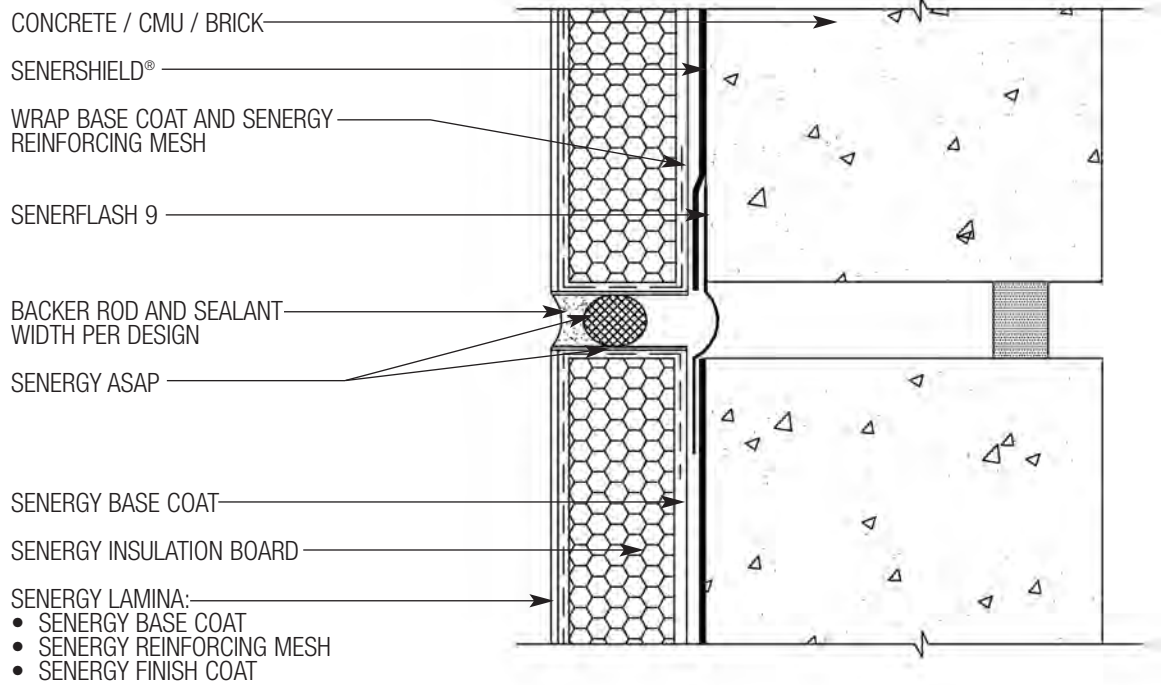
RDE-12 TYPICAL WINDOW SILL RECESSED



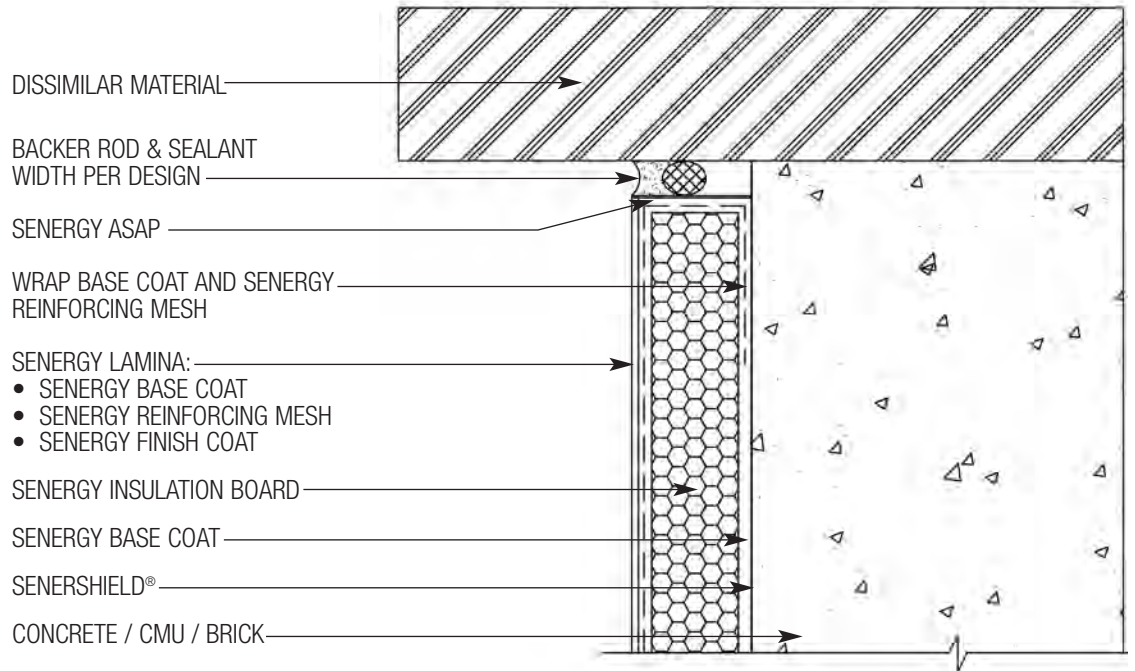
RDE-13 TYPICAL METAL COPING DETAIL



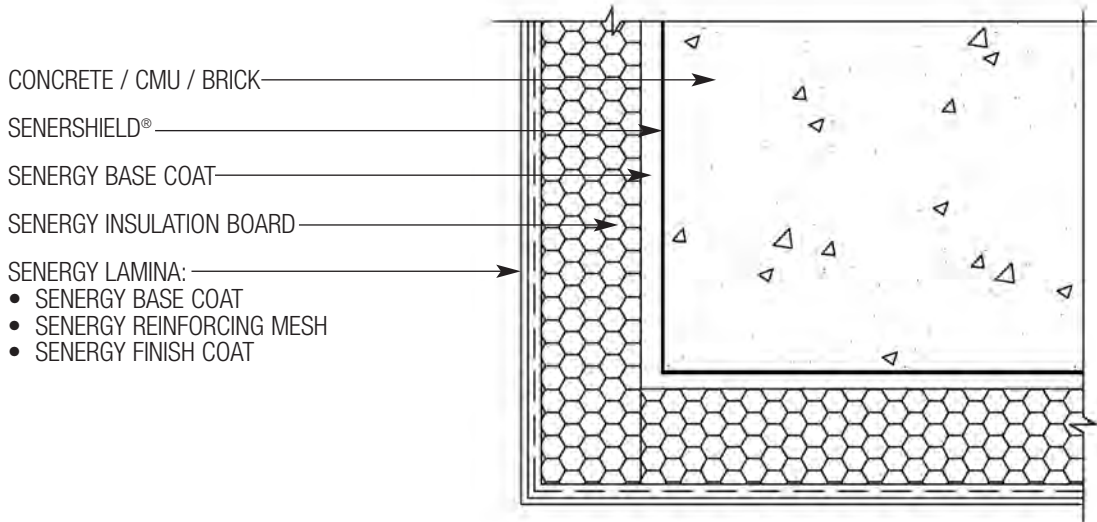
RDE-14 TYPICAL EPS PARAPET CAP



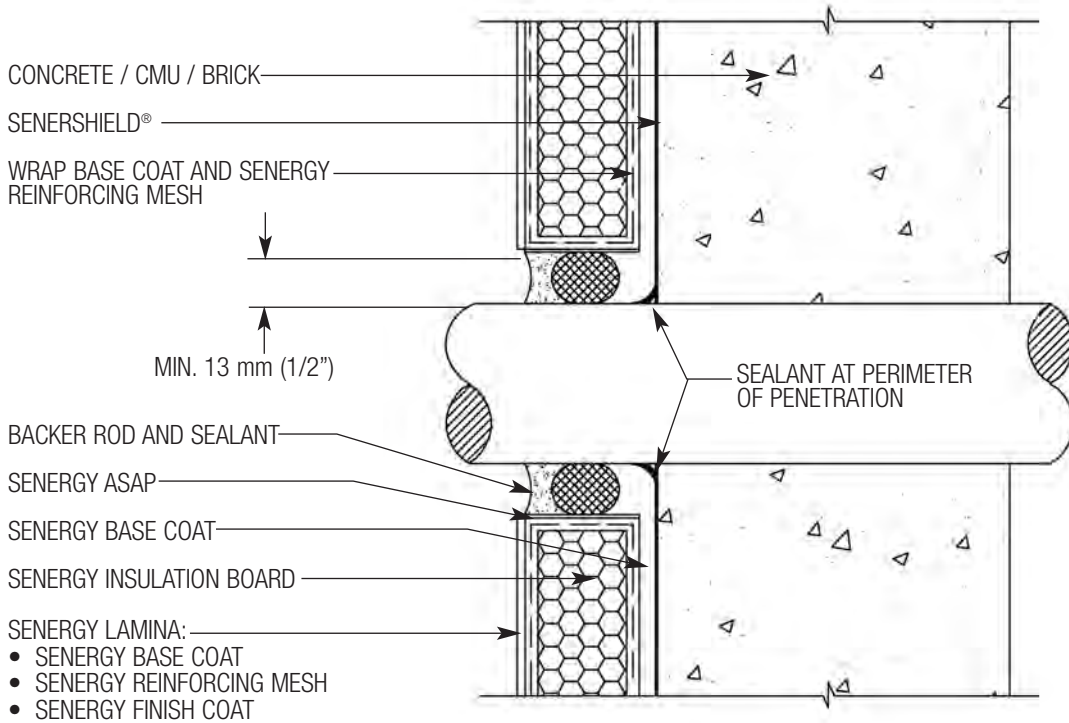
RDE-15 TYPICAL EXPANSION JOINT PLAN VIEW



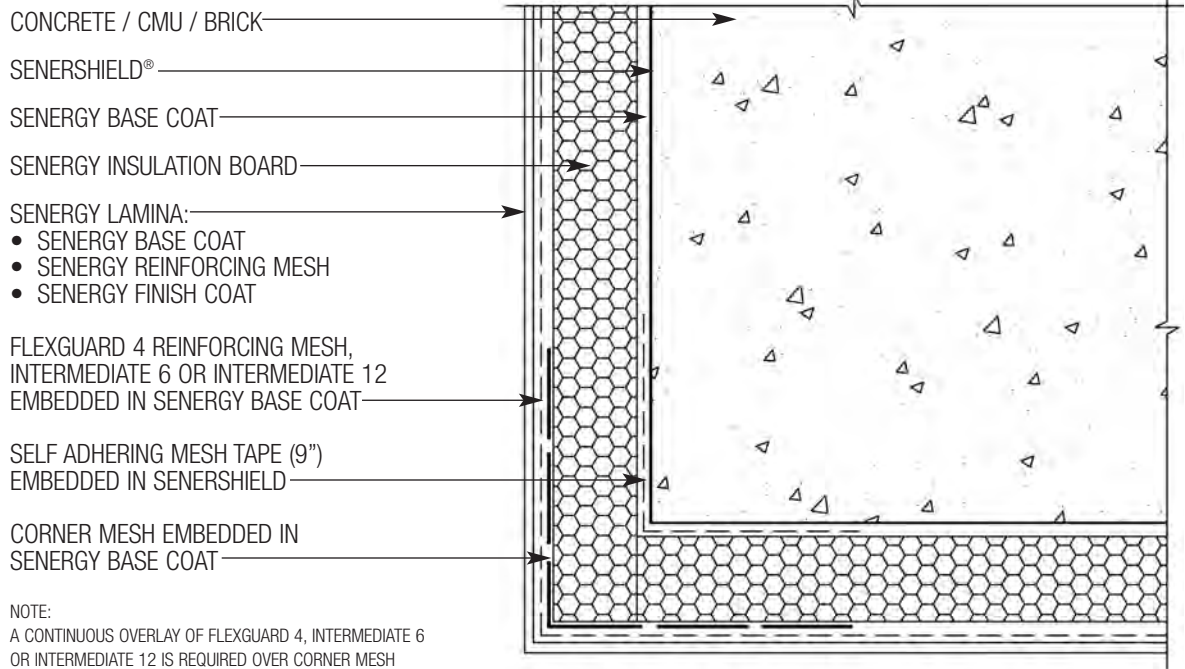
RDE-16 TERMINATION TO DISSIMILAR MATERIAL



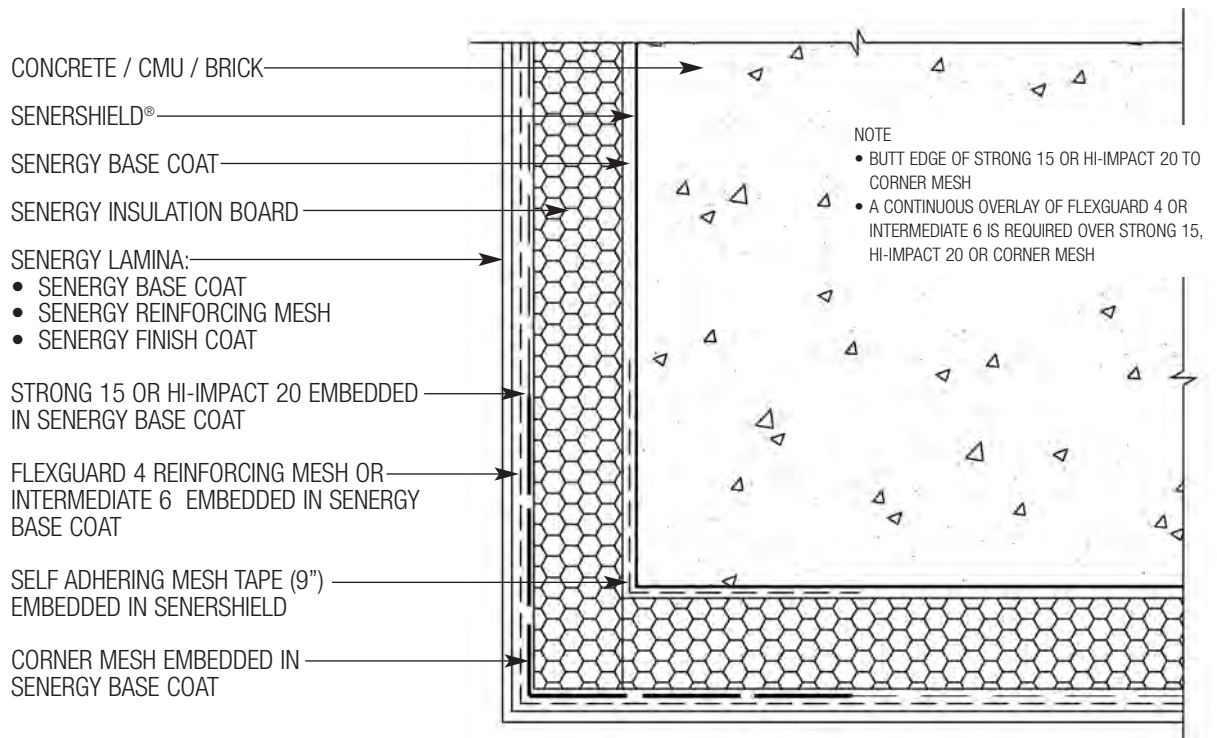
RDE-17 TERMINATION AT SOFFIT/GABLE END



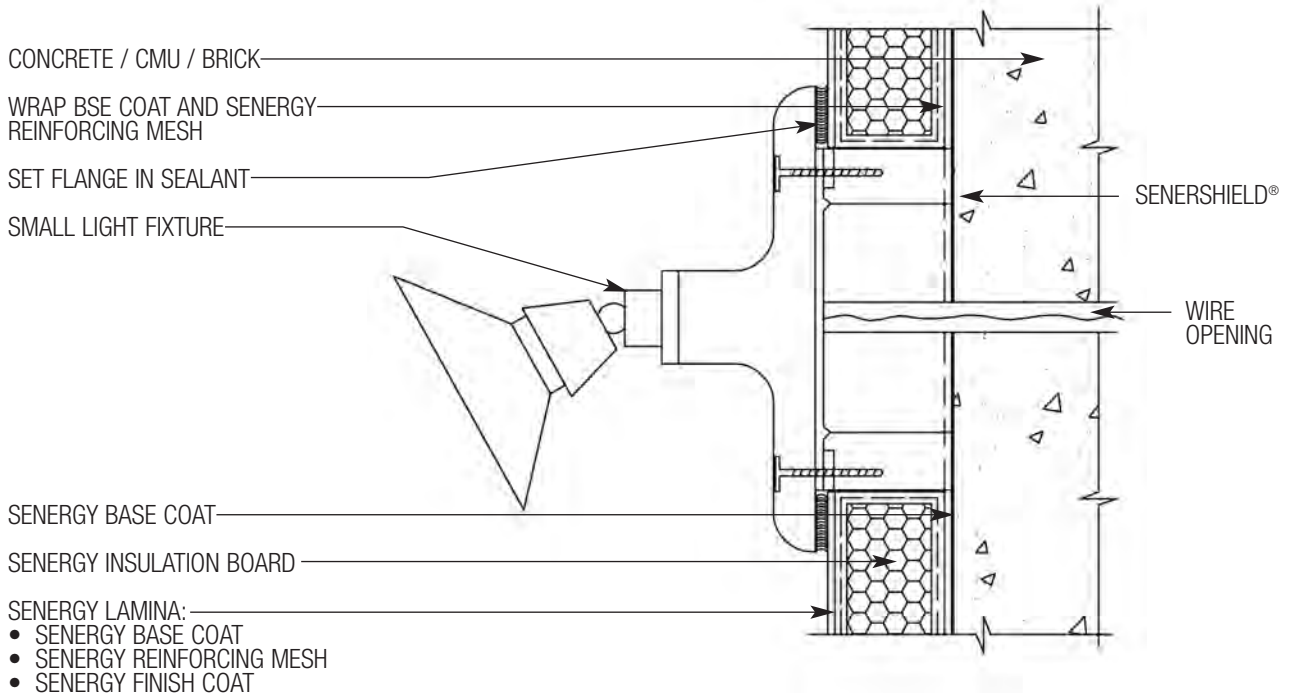
RDE-18 TYPICAL PIPE PENETRATION



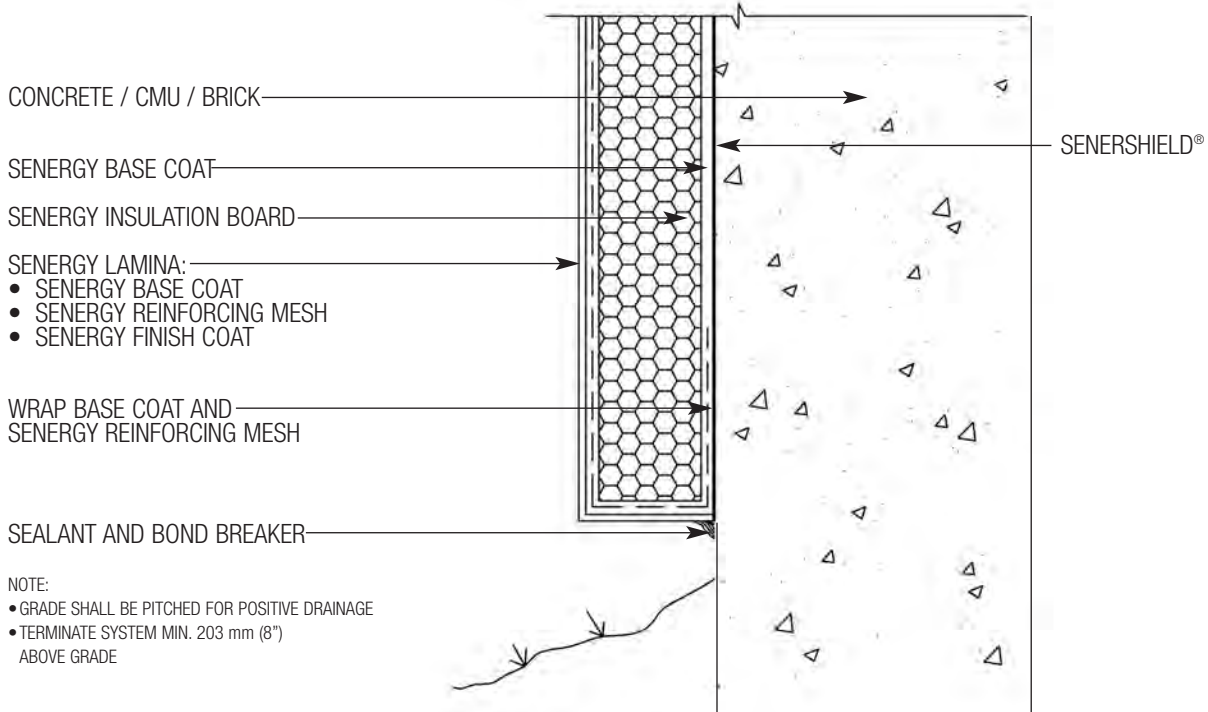
**RDE-19 TYPICAL CORNER MESH APPLICATION WITH FLEXGUARD 4,
INTERMEDIATE 6 OR INTERMEDIATE 12 (PLAN VIEW)**



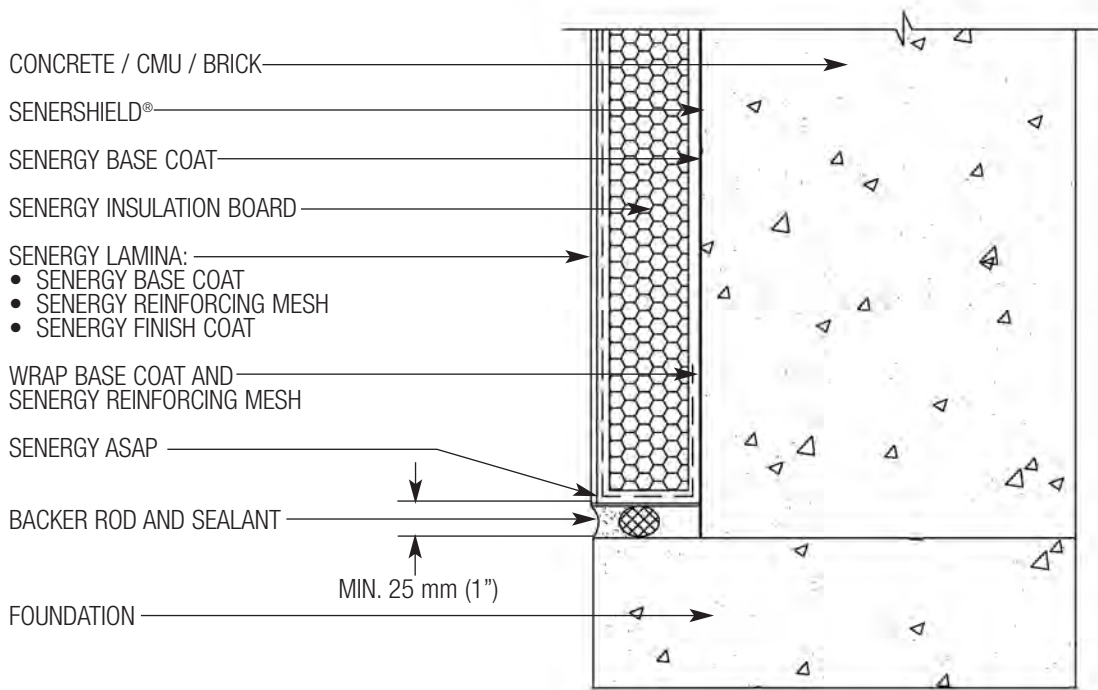
**RDE-20 TYPICAL CORNER MESH APPLICATION WITH STRONG
15 OR HI-IMPACT 20 (PLAN VIEW)**



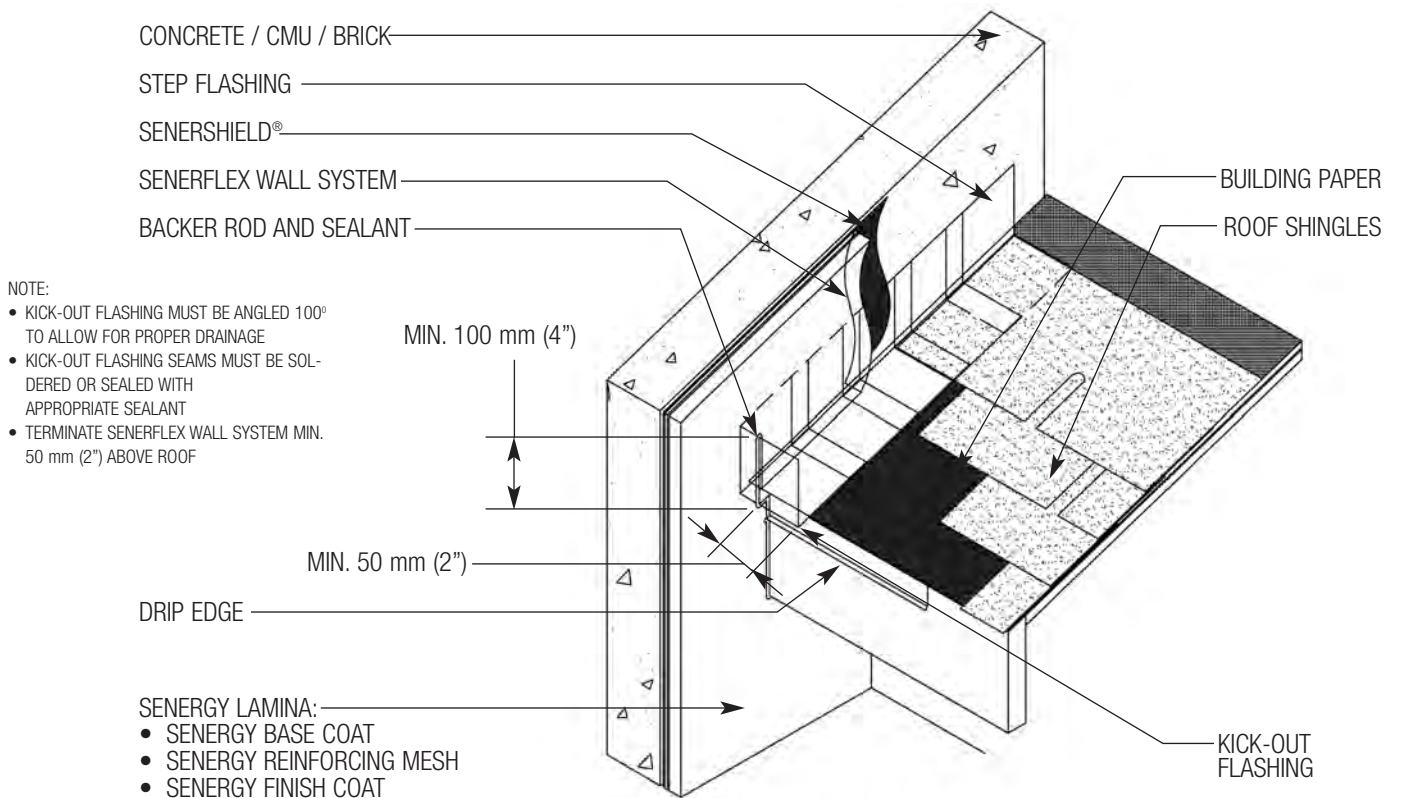
RDE-21 TYPICAL LIGHT FIXTURE



RDE-22 TYPICAL TERMINATION AT FOUNDATION



RDE-23 TERMINATION AT FOUNDATION (FLUSH)



RDE-24 TYPICAL KICKOUT FLASHING DETAIL

NOTES

Note

BASF Wall Systems is an operating unit of BASF Construction Chemicals, LLC. (herein after referred to as "BASF Wall Systems")

Residential Policy

On one and two-family residential framed construction, BASF Wall Systems requires that the wall system selected be one that includes provisions for moisture drainage. The choices include Senturion® line of water managed EIFS, commercial Senerflex® Wall Systems integrating moisture management features, Senergy Stucco Wall System, and Senergy Cement-Board Stucco™ Systems. Senergy Exterior Surfacing Systems for insulating concrete forms are also acceptable. There are no exceptions to this policy. Under no circumstances will BASF Wall Systems warrant the use of any other system on this type of construction without expressed written authorization from BASF Wall Systems [Residential construction using EIFS on masonry (CMU) or poured concrete does not require the additional water management provisions described above.] See the Senergy Residential Policy Bulletin for a more detailed discussion of this topic. Consult BASF Wall Systems Technical Services Department for specific recommendations concerning all other applications. Consult the Senergy web-site, www.senergy.cc for additional information about products and systems and for updated literature.

Disclaimer

This information and all further technical advice are based on BASF Wall Systems' present knowledge and experience. However, BASF assumes no liability for providing such information and advice including the extent to which such information and advice may relate to existing third party intellectual property rights, especially patent rights. In particular, BASF Wall Systems disclaims any and all CONDITIONS AND WARRANTIES, WHETHER EXPRESS OR IMPLIED, INCLUDING THE IMPLIED WARRANTIES OF FITNESS FOR A PARTICULAR PURPOSE OR MERCHANTABILITY. BASF WALL SYSTEMS SHALL NOT BE RESPONSIBLE FOR CONSEQUENTIAL, INDIRECT OR INCIDENTAL DAMAGES (INCLUDING LOSS OF PROFITS) OF ANY KIND. BASF Wall Systems reserves the right to make any changes according to technological progress or further developments. It is the customer's responsibility and obligation to carefully inspect and test any incoming goods. Performance of the product(s) described herein should be verified by testing and carried out only by qualified experts. It is the sole responsibility of the customer to carry out and arrange for any such testing. Reference to trade names used by other companies is neither a recommendation, nor an endorsement of any product and does not imply that similar products could not be used.

BASF Wall Systems

3550 St. Johns Bluff Road South
Jacksonville, FL 32224-2614

Phone 800 • 221 • 9255

Fax 904 • 996 • 6300

www.senergy.basf.com