

Sealant and Wall System Warranty

This program from BASF is defined by quality components and solid warranties, yielding the piece of mind you need.



Single Source—Peace of Mind

BASF is the world's largest chemical company. The strength of BASF assures a warranty you can rely on.



Who else but BASF can give you the peace of mind that comes with a true single-source warranty for the wall cladding and critical sealants? BASF, the world's largest chemical company, manufactures many recognizable and long-trusted brands such as Master Builders, Thoro®, and of course Sonneborn® and Senergy®. BASF can leverage the advantages of shared ownership and two technical departments working together from design through completion to offer the Senergy® Wall Systems Sealant Warranty. This warranty program represents a bold step that

pushes the envelope in commercial building protection for owners and architects.

Expansion joints and wall claddings constitute a small percentage of a construction budget, yet they perform some of the most critical roles in all of construction. The design of the joint, the performance of the sealant and cladding, and the compatibility between the sealant and adjacent materials are all vitally critical issues.

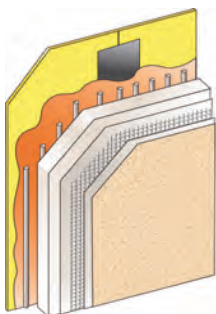
By choosing to design and build with Sonneborn's Sonolastic® 150 with VLM Technology and a Senergy wall system, you will have taken a major step toward greater quality assurance. By specifying this powerful combination, you will enjoy benefits that include:

- Consistently high-quality BASF manufactured sealant and wall system components
- Technical support that is consistent for cladding and sealant questions
- Consistent specifications and details
- Simplified resolution of construction issues
- Compatible components—predictable performance

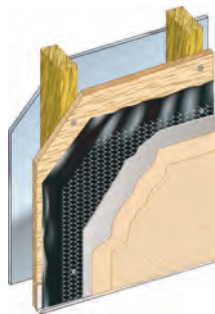
A System for Every Design

From stucco to Classic PB EIFS design to technically advanced water-managed systems, choose the wall system that best meets your project needs. The wide variety of design options provide optimal solutions whether you are building low rise or high rise, new or renovation, in high-traffic or remote areas, in the rain forest or the desert.

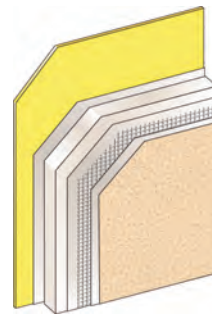
The tremendous design flexibility, color and texture selection, integral shapes, speed of construction and reliable performance have made EIFS, stucco and Acrylic Surfacing Systems the best values available to commercial construction. Now, with the addition of BASF's unmatched true single source cladding & sealant warranty, Senergy's wall systems are clearly the superior value.



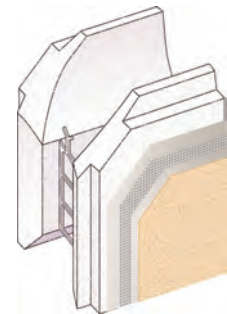
Senerflex® Channelled Adhesive Design



Senergy® Sentry Stucco Wall System



Senerflex® Classic PB Wall System



Senergy® Surfacing Systems for ICFs

VLM Technology—Ideal for EIFS

Sonolastic 150 with VLM technology represents the next generation in sealants. Engineered especially for EIFS and based on silyl-terminated polyether technology, Sonolastic 150 with VLM Technology combines the best properties of polyurethane and silicone sealants: long-lasting watertight seals, superior flexibility, and maximum joint movement capability. In addition, unlike conventional silicone sealants, Sonolastic 150 with VLM Technology can be painted, and is fast-curing, non-staining, and resistant to dirt pickup. The sealant and wall systems are appropriate for all climates and environments—from urban centers to the seacoast.

All Senergy® systems used in commercial construction in the USA and Canada are eligible for the Senergy Wall Systems Sealant Warranty.

| Advantages |
|--|
| Very low modulus; extreme joint movement capability (+100 to -50); seals EIFS joints with little stress, excellent flexibility for keeping moving joints weather tight |
| Easy to gun and tool; speeds application; neater joints |
| 13 standard colors; earth tone color palette; close match to popular colors |
| One component; no mixing; less labor |
| Weather resistant; long lasting weather-tight seal |
| Wide temperature application range; suitable for all climates |
| Compatible with non-rigid paints; can be painted without long delays |
| Non-staining; may be used where stone abuts the Senergy wall system |
| No static dirt pick-up; better looking buildings |
| Mildew resistant; does not support mildew growth |

Obtaining the Warranty

The combination of Senergy wall systems and Sonolastic® 150 with VLM Technology used on commercial projects qualify for the warranty. To obtain the warranty, the Wall System subcontractor must complete a simple warranty request for the completed work. Likewise, the sealant subcontractor must complete equally quick paperwork. Both forms are available from the Senergy distributor or by calling BASF Wall Systems at 800-221-9255. Once the completed forms are received by BASF Wall Systems, a warranty will be issued to the owner.

Note

BASF Wall Systems is an operating unit of BASF Corporation (herein referred to as "BASF Wall Systems")

Residential Policy

Apply wall systems in accordance with local building codes in force at the time of construction. On one and two-family residential framed construction, BASF Wall Systems requires that the wall system selected be one that includes provisions for moisture drainage. Please view the Senergy Residential Policy Bulletin on the Senergy website for a more detailed discussion of this topic.

Disclaimer

This information and all further technical advice are based on BASF Wall Systems' present knowledge and experience. However, BASF Wall Systems assumes no liability for providing such information and advice including the extent to which such information and advice may relate to existing third party intellectual property rights, especially patent rights. In particular, BASF Wall Systems disclaims any and all CONDITIONS AND WARRANTIES, WHETHER EXPRESS OR IMPLIED, INCLUDING THE IMPLIED WARRANTIES OF FITNESS FOR A PARTICULAR PURPOSE OR MERCHANTABILITY. BASF WALL SYSTEMS SHALL NOT BE RESPONSIBLE FOR CONSEQUENTIAL, INDIRECT OR INCIDENTAL DAMAGES (INCLUDING LOSS OF PROFITS) OF ANY KIND. BASF Wall Systems reserves the right to make any changes according to technological progress or further developments. It is the customer's responsibility and obligation to carefully inspect and test any incoming goods. Performance of the product(s) described herein should be verified by testing and carried out only by qualified experts. It is the sole responsibility of the customer to carry out and arrange for any such testing. Reference to trade names used by other companies is neither a recommendation, nor an endorsement of any product and does not imply that similar products could not be used.



Scan this code
to find the
most current
Senergy literature

BASF Wall Systems |

3550 St. Johns Bluff Road South Jacksonville, FL 32224-2614
P: 800.221.9255 F: 904. 996.6300 www.senergy.basf.com

©2012 BASF Corporation
Printed in U.S.A. 06/12