

# Secondary Moisture Protection Barrier Guidelines for Senerflex® Wall Systems

TECHNICAL BULLETIN  
1017564

## Guidelines for the application of Sheathing Joint and Rough Window Opening protection based on SENERSHIELD® trowel-applied or SENERSHIELD-R roller-applied liquid Air/Weather Barrier Membranes.

A secondary moisture protection barrier must be installed over the entire sheathed substrate and wrapped into rough openings prior to installation of Senturion and Senerflex Water-Drainage Systems. The secondary moisture protection barriers can be trowel or roller applied air/weather barriers. These liquid applied air/weather barriers are coupled with various flashing or reinforcing materials to form suitable systems that must be used for the protection of sheathing joints and rough openings. The following guidelines and drawings are intended to show concepts and common installation practices. The techniques specified in this document are to be used in conjunction with the installation of Senturion and Senerflex Water-Drainage Systems. The proper use and installation of these recommended protection systems will help achieve a properly protected opening and a warranty compliant installation. The following are acceptable techniques for these applications:

### Sheathing joint protection techniques:

#### When using SENERSHIELD: trowel applied air/weather barrier system

Note: SENERSHIELD is not for use on wood based substrates.

Option 1: SENERSHIELD in conjunction with Detail/Backwrap Mesh 9.5.

Option 2: SENERSHIELD in conjunction with Flashing Primer and SENERFLASH 4 or 9.

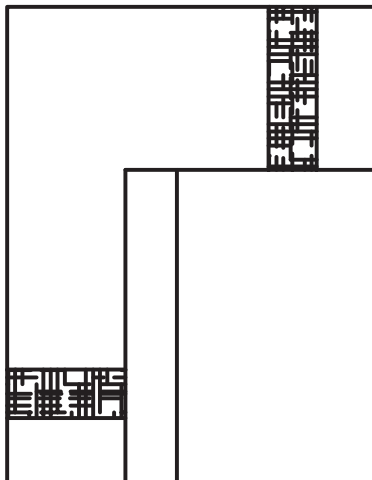
Option 3: SENERSHIELD in conjunction with Self Adhering Mesh tape, 4- or 9- inch wide.

#### When using SENERSHIELD-R: roller applied air/weather barrier system

Note: SENERSHIELD-R can be used on all substrates, including wood (2 coats).

Option 4: SENERSHIELD-R in conjunction with Flashing Primer and SENERFLASH 4 or 9.

Option 5: SENERSHIELD-R in conjunction with Sheathing Fabric, 4- or 9- inch wide.



Option 1: Mix SENERSHIELD per the instructions. Trowel apply a receiving coat in the joint and 2 to 5 inches out on each side. Lay the Detail/Backwrap Mesh into the wet SENERSHIELD. Trowel additional SENERSHIELD into the mesh to embed.

Option 2: Prime the joint area, out 2 to 5 inches on each side, with Flashing Primer. Allow to cure to almost tack free. Remove the backing from the SENERFLASH 4 or 9 inch. Press the SENERFLASH over the joint ensuring it is well and evenly adhered. The joint is now ready to receive the SENERSHIELD.

Option 3: Mix SENERSHIELD per the instructions. Apply the Self Adhering Mesh tape, 4- or 9-inch, over the joint. Trowel apply the SENERSHIELD over the mesh.

Option 4: Prime the joint area, out 2 to 5 inches on each side, with Flashing Primer. Allow to cure to almost tack free. Remove the backing from the SENERFLASH 4 or 9. Press the SENERFLASH over the joint ensuring it is well and evenly adhered. The joint is now ready to receive the final coat of SENERSHIELD-R.

Option 5: Mix SENERSHIELD-R per the instructions. Roller apply a receiving coat over the joint and out 2 to 5 inches on each side. Lay the Sheathing Fabric, 4 or 9 inch, into the wet membrane. Roller apply additional SENERSHIELD-R into the fabric to embed.

### Rough window opening protection techniques:

#### When using SENERSHIELD: trowel applied air/weather barrier

Note: SENERSHIELD is not for use on wood based substrates.

Option A: SENERSHIELD in conjunction with Detail/Backwrap Mesh 9.5.

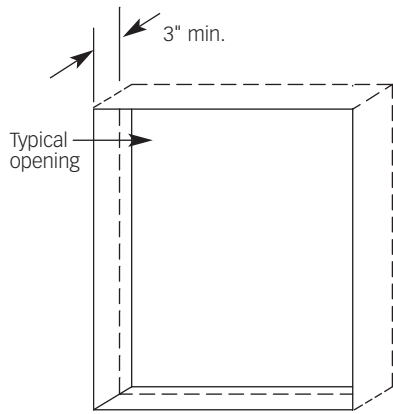
Option B: SENERSHIELD in conjunction with Flashing Primer and SENERFLASH 9.

#### When using SENERSHIELD-R: roller applied air/weather barrier

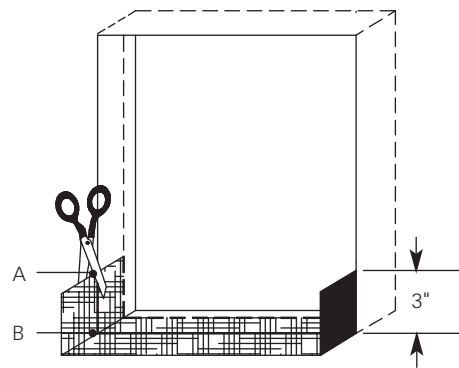
Option C: SENERSHIELD-R in conjunction with Flashing Primer and SENERFLASH 9.

Option D: SENERSHIELD-R in conjunction with Sheathing Fabric, 9 inch wide.

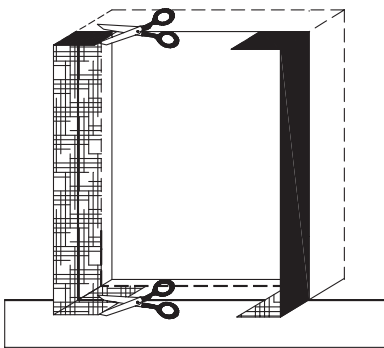
# Secondary Moisture Protection Barrier Guidelines for Senerflex® Wall Systems



**Step 1**



**Step 2**



**Step 3**

## Step 1

Mark a continuous line around the inside perimeter of the opening 3"–4" from the exterior face of the sheathing.

If option B or C are being installed, apply Flashing Primer to the surface of the opening between this perimeter line and the sheathing and out onto the sheathing about 6 inches on both sides, top and bottom. Allow to cure until tack free before proceeding to the next step. In the case of Dens-Glass Gold, a second application of primer may be needed.

Based on the option to be used, make ready by pre-cutting the particular material that will be used to wrap the rough opening. As specified, only 9 inch wide material shall be used. Cut each piece so that the length is 7 to 8 inches longer than the jam or sill to be wrapped.

## Step 2

Option A: Trowel the mixed SENERSHIELD™ onto the window sill between the center line and the face of the sheathing. Trowel the SENERSHIELD out onto the sheathing about 6 inches as well. Crease the Detail/Backwrap Mesh in the appropriate center spot and place into the wet SENERSHIELD. Cut the Detail/Backwrap Mesh as shown along the vertical plane of the sheathing. Trowel apply more SENERSHIELD into the Detail/Backwrap Mesh to embed.

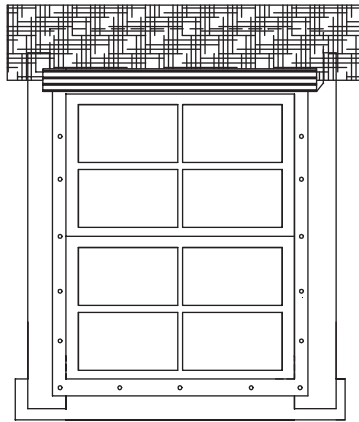
Option B and C: Peel the backing off the SENERFLASH 9 and apply to the primed surface and fold down onto the sheathing. Cut the SENERFLASH at the end as shown, along the vertical plane of the sheathing. Press in all areas to ensure good contact and adhesion to the surface.

Option D: Roll the mixed SENERSHIELD-R onto the window sill between the center line and the face of the sheathing. Roller apply the SENERSHIELD-R out onto the sheathing about 6 inches as well. Crease the Sheathing Fabric in the appropriate center spot and place into the wet SENERSHIELD-R. Cut the Sheathing Fabric as shown along the vertical plane of the sheathing. Roller apply additional SENERSHIELD-R into the Sheathing Fabric to embed.

Note: A minimum of 2 applications of SENERSHIELD-R is required over acceptable OSB and plywood substrates.

## Step 3

Repeat step 2, applying the protective barrier to the rough window opening left and right jamb. As in the case of step two, cut the wrapping material of choice along the vertical plane of the sheathing.



**Step 4**

**Step 4**

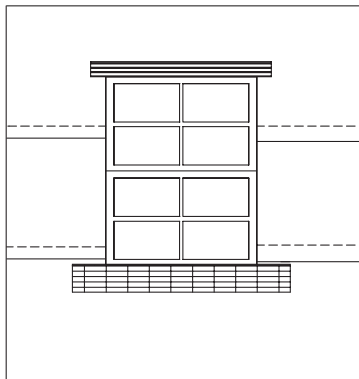
Install the window and attach all required accessories such as the starter track, vent track or window flashing.

Install a strip of the wrapping material used in that option directly to the sheathing over the window. Make sure that this material overlaps onto the starter track, vent track or window flashing.

Option A: Trowel apply a receiving coat of SENERSHIELD, then apply the Detail/Backwrap Mesh into the wet SENERSHIELD. Trowel additional SENERSHIELD into the Detail/Backwrap Mesh to embed.

Option B and C: Peel off the backing of the SENERFLASH 9 and apply directly to the primed sheathing as described above.

Option D: Roller apply SENERSHIELD-R onto the surface of the sheathing and then place Sheathing Fabric. Roller apply additional SENERSHIELD-R into the Sheathing Fabric to embed.



**Step 5**

**Step 5**

Apply the specified membrane, SENERSHIELD or SENERSHIELD-R to the entire sheathing surface of the building.

**Step 6**

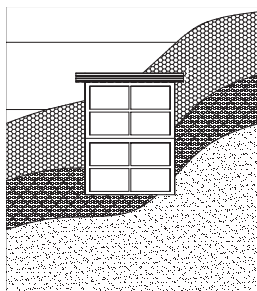
Apply Senturion and Senerflex Water-Drainage System per the current specifications and details.

**Technical Information**

Consult our Technical Services Department for specific recommendations concerning all other applications. Consult the Senergy website, [www.senergy.basf.com](http://www.senergy.basf.com), for additional information about products and systems and for updated literature.

**General**

See Senergy product bulletins for complete application instructions for SENERSHIELD (# 1017731) and SENERSHIELD-R (# 1021096) to Senerflex Wall Systems.



**Step 6**

# Secondary Moisture Protection Barrier Guidelines for Senerflex® Wall Systems

## Note

BASF Wall Systems is an operating unit of BASF Construction Chemicals, LLC. (herein after referred to as "BASF Wall Systems")

## Residential Policy

On one and two-family residential framed construction, BASF Wall Systems requires that the wall system selected be one that includes provisions for water drainage. The choices include Senturion® line of water drainage EIFS, commercial Senerflex® Channeled Adhesive or Channeled Insulation Design, Senergy Stucco Wall System, and Senergy Cement-Board Stucco™ Systems. There are no exceptions to this policy. Under no circumstances will BASF Wall Systems warrant the use of any other system on this type of construction without expressed written authorization from BASF Wall Systems [Residential construction using EIFS on masonry (CMU) or poured concrete does not require the additional water drainage provisions described above. Senergy Exterior Surfacing Systems for insulating concrete forms are also acceptable.] See the Senergy Residential Policy Bulletin for a more detailed discussion of this topic. Consult BASF Wall Systems Technical Services Department for specific recommendations concerning all other applications. Consult the Senergy website, [www.senergy.basf.com](http://www.senergy.basf.com) for additional information about products and systems and for updated literature.

## Disclaimer

This information and all further technical advice are based on BASF Wall Systems' present knowledge and experience. However, BASF assumes no liability for providing such information and advice including the extent to which such information and advice may relate to existing third party intellectual property rights, especially patent rights. In particular, BASF Wall Systems disclaims any and all CONDITIONS AND WARRANTIES, WHETHER EXPRESS OR IMPLIED, INCLUDING THE IMPLIED WARRANTIES OF FITNESS FOR A PARTICULAR PURPOSE OR MERCHANTABILITY. BASF WALL SYSTEMS SHALL NOT BE RESPONSIBLE FOR CONSEQUENTIAL, INDIRECT OR INCIDENTAL DAMAGES (INCLUDING LOSS OF PROFITS) OF ANY KIND. BASF Wall Systems reserves the right to make any changes according to technological progress or further developments. It is the customer's responsibility and obligation to carefully inspect and test any incoming goods. Performance of the product(s) described herein should be verified by testing and carried out only by qualified experts. It is the sole responsibility of the customer to carry out and arrange for any such testing. Reference to trade names used by other companies is neither a recommendation, nor an endorsement of any product and does not imply that similar products could not be used.

## BASF Wall Systems

3550 St. Johns Bluff Road South  
Jacksonville, FL 32224-2614  
Phone 800 • 221 • 9255  
Fax 904 • 996 • 6300  
[www.senergy.basf.com](http://www.senergy.basf.com)