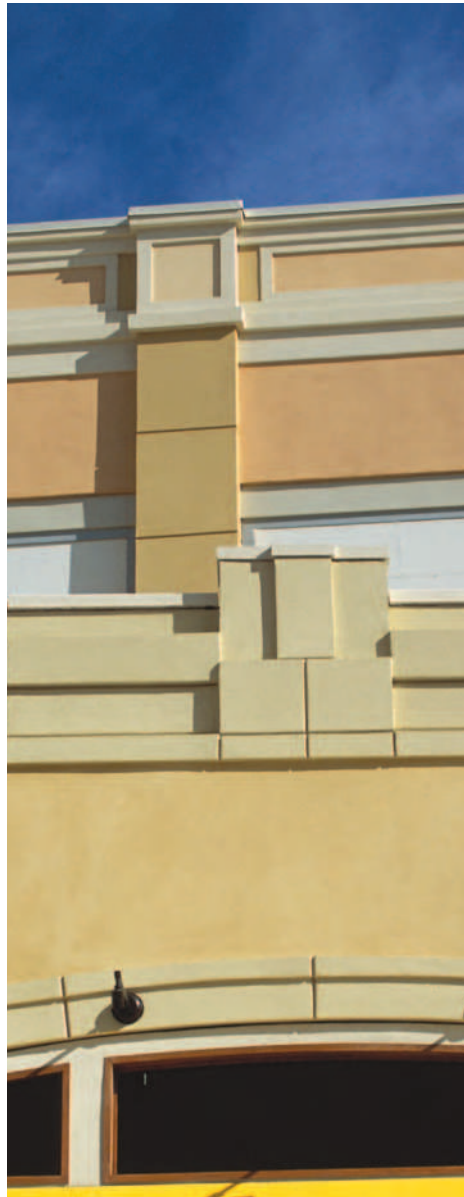
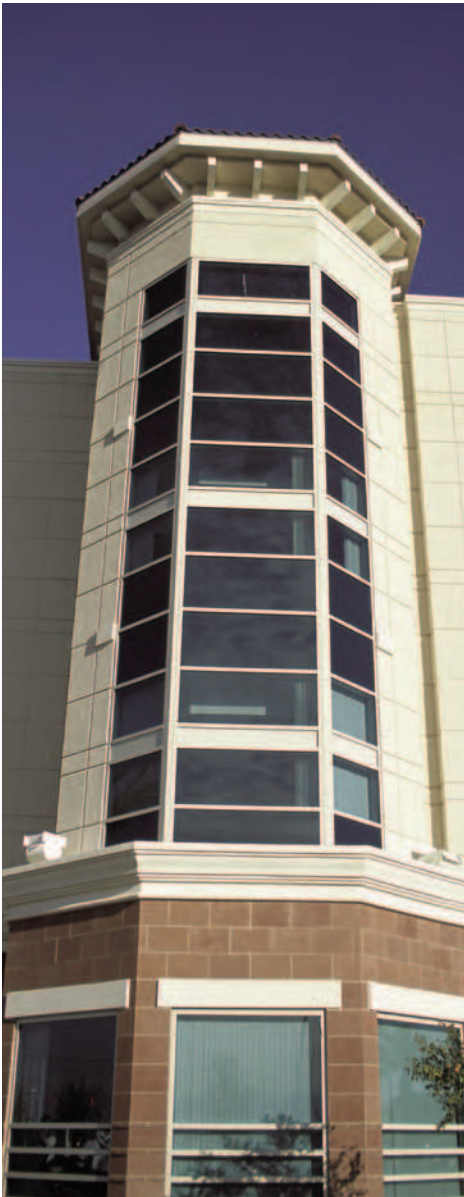




## Commercial Wall Systems

*Design Freedom for Distinctive  
and Enduring Buildings*



# Senergy® EIFS... The look that Lasts

*Whether you're building high-rise condos on the Gulf Coast, hotels in the desert, or offices in the far north, Senergy® has the look you want and the cladding system you need. When you build with Senergy, Build with Confidence®.*

## **Senergy Exterior Insulation and Finish Systems (EIFS) from BASF Wall Systems provide style and function like no other commercial cladding.**

Brilliant colors. Ornate shapes. Dramatic moldings. Graceful arches. Stunning cornices and bold wall patterns set our wall systems apart. Design flexibility such as this is one reason our products have been used on some of the world's most stunning buildings... the other is outstanding, dependable performance.

Senerflex® systems provide a strong, durable primary weather barrier that is reinforced for impact resistance. The advanced chemistry of our finishes gives them fade-resistant, crack-resistant and low maintenance characteristics. Our systems provide a seamless blanket of insulation that makes EIFS the number one choice for energy efficiency.

**Great "looks" start with a great foundation.** And that foundation is Senerflex® Classic PB, the industry's pre-eminent barrier EIFS system with a 25-year track record of proven performance in commercial construction. For most commercial applications, Senerflex Classic PB is all you will ever need. It is a time-proven favorite of architects, owners, contractors and applicators.

- Architects love it because it enables them to produce distinctive and enduring designs that would be impossible or too expensive to create with other claddings.

- Owners ask for it because it gives them a unique "look" that is backed with the industry's strongest warranty.
- Contractors insist on it because they've been using it, trouble-free, for more than 25 years.
- And applicators swear by it because its superior workability makes it user-friendly and cost-effective.

Senerflex® Classic PB is the most economical way to achieve "the unique look" of EIFS that has taken the commercial construction market by storm and made EIFS the number one commercial cladding in North America.

## **Add only the protection you need.**

Sometimes a project has design requirements that call for more protection from incidental moisture than even the best barrier EIF system can provide. This need for additional protection occurs when:

- Wall designs include lots of openings, ganged windows and/or complex roof lines
- Structures have wide-open exposure without overhangs to absorb the impact of weather
- Structures are located in a coastal area
- Or when local codes, warranties, insurance policies or owners require it.

For these situations, Senergy® offers a complete line of design options that enable architects to add just the right level of protection needed for each job.

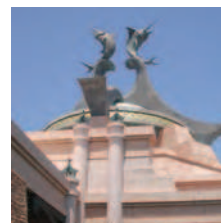


*Prefabricated, light-weight EIFS panels enabled easy and cost-effective installation of Roman design elements atop the 300-foot tower addition to Caesar's Hotel and Casino in Atlantic City, N.J.*





*In September 1999, the 155 mph winds of Hurricane Floyd ripped through the Bahamas, toppling 30-foot trees and ripping roofs from homes. The Atlantis Resort and Casino, clad with 425,000 square feet of Senerflex®, remained unscathed.*



## System Design Options

- **Senerflex® Secondary Weather Barrier Design**—used when an air barrier, additional sheathing protection and redundancy are desired.
- **Senerflex® Flashed Opening Design**—used when local drainage is desired around windows and other openings.
- **Senturion™ I, II, III**—used in light commercial construction when an economical drainage system is desired and high windload capacity is not a design consideration.
- **Senerflex® Channeled Adhesive Design**—used when a rainscreen or moisture drainage system is desired or to satisfy local code issues related to drainage.
- **Senerflex® Channeled Insulation Design**—used when drainage is required and windload requirements dictate adhesive attachments.
- **Senerflex® Adhered Mat Design**—used when an unobstructed plane is required to allow the exit of incidental moisture from the structure's walls. It is ideal for retrofit over walls that are not suited to adhesive attachment.
- **Senerflex® Pressure Equalized Design**—used when dictated by local codes or requested.

All of these options are designed for use with Senerflex Classic PB and can be mixed and matched on the same building. This flexibility allows you to

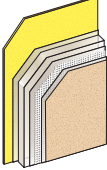
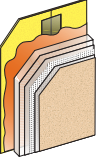
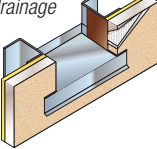
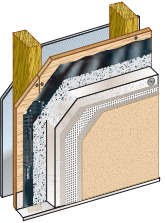
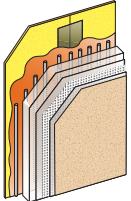
specify just the right level of protection while keeping design and construction costs to a minimum.

If you want the look of stucco but do not need exterior insulation, **Senergy® Cement-Board Stucco™ 1000** offers a strong alternative. This is a high-impact, water-managed system that uses a cement-board core with a polymer modified, fiberglass reinforced mesh base coat and 100% acrylic polymer exterior finish.

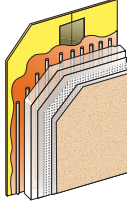
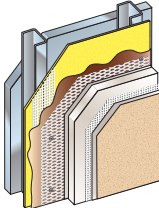
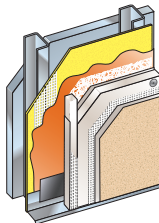
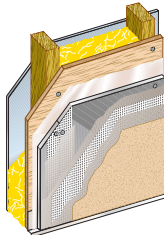


# Senergy® Wall Systems

## & Performance Design Options

	SYSTEM	COMPONENTS	USES	BENEFITS	WARRANTY
C L A S S I C P B E I F S	<b>Senerflex® Classic PB</b> <i>Primary barrier moisture control</i> 	Adhesive + EPS Insulation Board + Reinforced Base Coat + 100% Acrylic Polymer Finish <i>Senerflex Classic PB is the foundation for many of the following systems.</i>	<ul style="list-style-type: none"> <li>• High-rise</li> <li>• Low-rise</li> <li>• New and retrofit construction</li> <li>• In all climates</li> </ul>	<ul style="list-style-type: none"> <li>• Design flexibility</li> <li>• Aesthetic appeal</li> <li>• Adhesively applied system to meet most wind-load requirements</li> <li>• Easy installation</li> <li>• Energy savings</li> <li>• Exceptional durability</li> <li>• Low maintenance</li> </ul>	5-year limited material
	<b>Senerflex® Secondary Weather Barrier Design</b> <i>Primary and secondary barrier moisture control</i> 	Senerflex Classic PB + Senershield trowel-applied or Senershield-R roller-applied secondary weather barrier + Senerflash 9 at flashed openings and Senerflash 4 or Flexguard 4 at sealed sheathing joints	<ul style="list-style-type: none"> <li>• When redundancy is desired</li> <li>• Added protection of the sheathing is desired</li> <li>• An air barrier is desired</li> <li>• Adhesive attachment is required to meet wind-load requirements</li> </ul>	<ul style="list-style-type: none"> <li>• All the benefits of Classic PB</li> <li>• Cost-effective, added level of protection of sheathing and cavity against moisture and air infiltration</li> <li>• Increased energy efficiency</li> </ul>	5-year limited material
	<b>Senerflex® Flashed Opening Design</b> <i>Localized drainage</i> 	Senerflex Classic PB + Pan flashing at large openings to allow exit of incidental moisture at window and other large openings	<ul style="list-style-type: none"> <li>• When "local source" drainage is required or desired, such as at windows and doors</li> </ul>	<ul style="list-style-type: none"> <li>• All the benefits of Classic PB</li> <li>• Relatively low cost; most economical option for adding protection around windows</li> <li>• Effective means to drain incidental moisture from localized sources such as windows and doors</li> </ul>	5-year limited material
W A T E R - M A N A G E D P B E I F S	<b>Senturion™ I, II and III</b> <i>Rainscreen</i>  <i>(Senturion I shown)</i>	<b>Senturion I</b> — secondary weather barrier protects moisture-sensitive sheathing  <b>Senturion II</b> — channeled insulation board allows incidental moisture to drain  <b>Senturion III</b> — drainage mat for unobstructed drainage  <i>All Senturions have EPS board, Reinforced Base Coat and 100% acrylic polymer Finish.</i>	<ul style="list-style-type: none"> <li>• Light commercial construction where water-managed EIFS is desired but high wind-load capacity is not a design consideration</li> </ul>	<ul style="list-style-type: none"> <li>• All of the benefits of Classic PB except meeting high wind-load requirements (not adhesively applied)</li> <li>• Provides secondary moisture barrier either via approved sheet membrane or Senershield-R</li> <li>• Provides drainage system which allows incidental moisture to drain via channels in the insulation board</li> <li>• Provides an unobstructed drainage plane over the entire secondary moisture barrier</li> </ul>	Senturion I— 5-year limited material; 1-year moisture drainage  Senturion II— 7-year limited material; 10-year moisture drainage  Senturion III— 10-year limited material; 10-year moisture drainage
	<b>Senerflex® Channeled Adhesive Design</b> <i>Rainscreen</i> 	Senerflex PB + Vertical ribbons of adhesive on insulation board for evacuation of incidental moisture + Senershield trowel-applied or Senershield-R roller-applied secondary weather barrier + Senerflash 9 or 9" Sheathing Fabric at flashed openings and Senerflash 4, 4" Sheathing Fabric or Flexguard 4 at sealed sheathing joints	<ul style="list-style-type: none"> <li>• When a rainscreen or moisture drainage wall system is desired</li> <li>• To satisfy other local/regional code issues related to drainage</li> </ul>	<ul style="list-style-type: none"> <li>• All the benefits of Classic PB</li> <li>• Cost-effective, added level of protection of sheathing and cavity against moisture and air infiltration</li> <li>• The trowel pattern of the adhesive creates evacuation channels between the secondary barrier and the insulation board to allow exit of incidental moisture</li> </ul>	7-year limited material; 7-year moisture drainage



SYSTEM	COMPONENTS	USES	BENEFITS	WARRANTY
<b>Senerflex® Channeled Insulation Design</b> <i>Rainscreen</i> 	Senerflex PB + Channeled Insulation Board + Senershield trowel-applied or Senershield-R roller-applied secondary weather barrier + Senerflash 9 or Sheathing Fabric at flashed openings and Senerflash 4, 9" Sheathing Fabric or Flexguard 4 at sealed sheathing joints	<ul style="list-style-type: none"> <li>When drainage is desired and wind-load requirements dictate the use of adhesive attachment</li> </ul>	<ul style="list-style-type: none"> <li>All the benefits of Classic PB</li> <li>Channeled insulation board with vertical ribbons of adhesive enables drainage</li> <li>Secondary moisture protection of the substrate is provided as well as an air barrier</li> </ul>	7-year limited material; 7-year moisture drainage
<b>Senerflex® Adhered Mat Design</b> <i>Rainscreen</i> 	Senerflex PB + Metal Lath + Senershield trowel-applied or Senershield-R roller-applied secondary weather barrier + Senerflash 9 or Sheathing Fabric at flashed openings and Senerflash 4, 9" Sheathing Fabric or Flexguard 4 at sealed sheathing joints	<ul style="list-style-type: none"> <li>When drainage is desired and project conditions dictate adhesive system attachment to accommodate high wind-load requirements</li> <li>May also be applied over traditional 15# felt or equal in place of Senershield if an air barrier is not needed</li> <li>To retrofit over walls that are not suitable for direct adhesive attachment</li> </ul>	<ul style="list-style-type: none"> <li>All the benefits of Classic PB</li> <li>Provides an unobstructed plane to allow exit of incidental moisture</li> <li>Ability to satisfy high wind-load requirements</li> </ul>	7-year limited material; 7-year moisture drainage
<b>Senerflex® Pressure Equalized Design</b> <i>Pressure equalized rainscreen</i> 	Senerflex PB + Compartments to equalize the pressure differentials between the external and internal planes of the rainscreen + Senershield trowel-applied or Senershield-R roller-applied secondary weather barrier + Senerflash 9 or Sheathing Fabric at flashed openings and Senerflash 4, 9" Sheathing Fabric or Flexguard 4 at sealed sheathing joints	<ul style="list-style-type: none"> <li>When dictated by local codes</li> <li>When pressure equalized approach to moisture control is desired</li> </ul>	<ul style="list-style-type: none"> <li>All the benefits of Classic PB with mechanical fasteners</li> <li>Multiple levels of protection</li> <li>Starts with secondary moisture protection of the substrate</li> <li>Provides an airtight cavity with clear, unobstructed drainage path</li> </ul>	7-year limited material; 12-year moisture drainage
<b>Senergy® Cement-Board Stucco™ 1000*</b> <i>Impact and moisture protection</i> 	Acrylic Polymer Finish + Reinforced Base Coat + Additional reinforcement of all cement board joints + ASTM C1325 Cement Board + Senershield-R or sheet-membrane secondary moisture protection barrier + Senerflash 9 or 9" Sheathing Fabric at flashed openings	<ul style="list-style-type: none"> <li>In light commercial construction where drainage and puncture resistance are desired</li> <li>Where dictated by local codes</li> </ul>	<ul style="list-style-type: none"> <li>Resists high impact and will not puncture</li> <li>Weather resistant</li> <li>Evacuates incidental moisture</li> <li>Increased dimensional stability</li> <li>Water repellent finish</li> <li>Design freedom</li> </ul>	10-year limited material and labor

\*CBS 1000 utilizes acceptable sheathings over studs prior to attachment of secondary barrier and cement board.

Note: A rainscreen wall system includes a secondary weather barrier, cavity, and a primary cladding material designed to shed water. Incidental moisture intrusion around windows and doors is blocked and diverted back to the exterior. The optional integration of an air barrier with continuous air seals can optimize performance. A rainscreen is not pressure equalized unless so designed.

# Support every step of the way



Independent laboratories test the wall systems to establish compliance with major building codes and federal, state and local requirements for performance related to wind, fire, and drainage efficiency during wind-driven rain (simulated by using high pressure water jets for maximum force).

## Unmatched research and development.

Research and development is a major reason why more and more of the country's top architects are turning to Senergy®. Our rigorous testing ensures exceptional resistance to impact, mold, mildew, dirt, and the effects of sun, humidity and acid rain... that gives our customers confidence in the products they specify and install.

While we have conducted comprehensive and thorough tests to evaluate performance in fire, wind, rain, prolonged freeze-thaw conditions and weather exposure over the long term, the best test is real life performance. For more than 25 years Senerflex® Wall Systems have weathered the test of time... beautifully.

## Technical support every step of the way.

BASF Wall Systems does more than provide you with just product and system application information. From concept through construction, we are here if you need us.

During planning/specification stages, our Technical Services Representatives can assist you with:

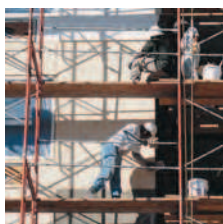
- System selection advice
- Product/system applications data
- Plan reviews
- Building code and construction information
- Water vapor transmission analysis
- Product and system testing/evaluation reports
- And more...

Technical assistance is also available in the field for on-site guidance.

Comprehensive technical information can be accessed and downloaded from our website: [www.senergy.basf.com](http://www.senergy.basf.com). Design professionals can download Auto/CAD-ready .dwg files into larger CAD drawings, enabling Senergy's detail drawings to be modified and integrated to suit specific project requirements.

During the construction phase, our team of Technical Applications Consultants (TAC) can help you solve problems by taking advantage of their intimate knowledge of the industry's "best practices" and the newest construction techniques.

Another aspect of our dedication to customer support is our investment in state-of-the-art color matching computer systems for all our manufacturing plants. These enable us to provide the highest degree of color matching possible.





**Local distribution for easy access.** With more than 150 distributor locations throughout North America, you have easy access to product, service and support anywhere on the continent. Each Senergy® distributor is committed to getting you what you need when you need it. For the name of your nearest Senergy distributor, call us at 800-221-9255 or visit our website at [www.senergy.basf.com](http://www.senergy.basf.com).

**Training and continuing education.** The best cladding systems in the world require proper specification, design and installation. To aid in professional development, BASF Wall Systems provides training and continuing education programs for architects, contractors, applicators and owners.

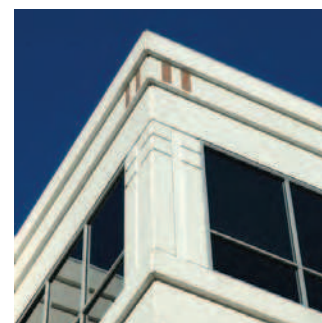


BASF Wall Systems is registered with the American Institute of Architects as an AIA Continuing Education Program Provider. Sessions can be arranged by contacting the company directly or through your local Senergy distributor.

Classroom and hands-on training for contractors, distributors and applicators are regularly provided at our state-of-the-art training facility in Jacksonville, Florida.

**The best warranties in the business.**

At BASF Wall Systems, a warranty is more than just a piece of paper. It represents a promise to our customers that our products and systems will do what we say they will do. As a result, we provide some of the strongest warranties in the commercial claddings business. And, they are warranties you can count on.



As part of BASF Construction Chemicals, BASF Wall Systems enjoys extensive backing from the world's largest provider of construction chemical products. That means the Senergy® products and systems you specify and install will always be at the technological cutting edge.

When you build with Senergy®,  
you ***build with confidence***®.



#### **NOTE**

BASF Wall Systems is an operating unit of BASF Construction Chemicals, LLC. (herein after referred to as "BASF Wall Systems")

#### **DISCLAIMER**

This information and all further technical advice are based on BASF Wall Systems' present knowledge and experience. However, BASF assumes no liability for providing such information and advice including the extent to which such information and advice may relate to existing third party intellectual property rights, especially patent rights. In particular, BASF Wall Systems disclaims any and all CONDITIONS AND WARRANTIES, WHETHER EXPRESS OR IMPLIED, INCLUDING THE IMPLIED WARRANTIES OF FITNESS FOR A PARTICULAR PURPOSE OR MERCHANTABILITY. BASF WALL SYSTEMS SHALL NOT BE RESPONSIBLE FOR CONSEQUENTIAL, INDIRECT OR INCIDENTAL DAMAGES (INCLUDING LOSS OF PROFITS) OF ANY KIND. BASF Wall Systems reserves the right to make any changes according to technological progress or further developments. It is the customer's responsibility and obligation to carefully inspect and test any incoming goods. Performance of the product(s) described herein should be verified by testing and carried out only by qualified experts. It is the sole responsibility of the customer to carry out and arrange for any such testing. Reference to trade names used by other companies is neither a recommendation, nor an endorsement of any product and does not imply that similar products could not be used.

# ***Senergy***®

*Build with confidence*®

#### **BASF Wall Systems**

3550 St. Johns Bluff Road South  
Jacksonville, FL 32224-2614  
Phone 800 • 221 • 9255  
Fax 904 • 996 • 6300  
[www.senergy.basf.com](http://www.senergy.basf.com)

©2008 BASF Construction Chemicals, LLC.  
Printed in U.S.A. 1017753-0608