



Petromat Paving Interlayer Fabrics

PETROMAT® geotextile paving fabrics are used as a moisture barrier and stress absorbing interlayer beneath flexible pavements such as asphalt overlays or a chip seal. PETROMAT is unchallenged in the industry for asphalt pavement interlayer application. It is AASHTO/NTPEP compliant and is available in a variety of styles to fit your specific project needs and specifications.



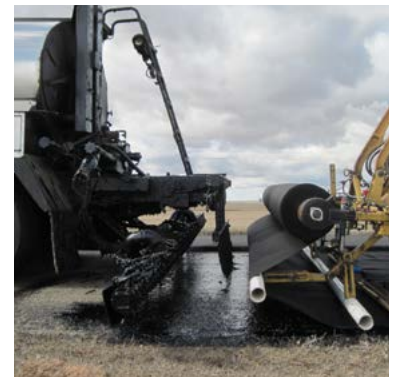
PETROMAT®
Original The Original Paving Fabric



PETROMAT®
Plus-White
The Cool, Track-less Paving Fabric



PETROMAT®
Enviro The Recyclable Paving Fabric



Propex pioneered paving interlayer fabrics with **PETROMAT Original** fifty years ago. Today it continues to be the most proven asphalt paving fabric in the market. No other product provides a better pavement moisture barrier or stress absorbing interlayer to prevent reflective cracking.



Propex has also introduced **Petromat Plus-White**, the most versatile paving fabric that yields consistent installation, day or night, in any climate. Its light reflective properties remain up to 50° F cooler, than dark paving fabric. No wonder PETROMAT continues to be light years ahead of the competition.



Our commitment to innovation and sustainable design led to the development of **PETROMAT Enviro**, an easily millable and recyclable paving fabric. But recyclable is only half the story. It's an engineered interlayer solution that out performs its competition from start to finish.



***Patent pending**



EASY & EFFICIENT INSTALLATION	PETROMAT ORIGINAL	PETROMAT PLUS-WHITE	PETROMAT ENVIRO
Engineered with optimal elongation to allow placement directly onto a milled surface.	✓	✓	✓
Flexible design allows smooth, wrinkle-free installation, even around curves.	✓	✓	✓
Poses no hazard or irritation associated with fiberglass-based products.	✓	✓	✓
Solar reflective fabric remains up to 50° F cooler than dark paving fabric, minimizing tack coat bleed through and tracking and enabling a cooler work environment.		✓	✓
Reflective fabric provides better visibility during night paving.		✓	✓
UNMATCHED PERFORMANCE			
Thicker design than most fiberglass-based paving mats, allows greater stress absorption to more efficiently prevent fatigue and reflective cracking.	✓	✓	✓
Proven performance equal to an additional 1.5" asphalt concrete overlay thickness.	✓	✓	✓
Does not rupture when placed directly onto a milled surface.	✓	✓	✓
Retains at least 0.20 gal./sq/yd. asphalt cement to become a true, 10 ⁻⁴ cm/sec pavement moisture barrier.	✓	✓	✓
Flexible design maintains an uncompromised moisture barrier, even if cracking does occur in the pavement.	✓	✓	✓
RECYCLABLE			
Engineered to be easily milled and recycled into new asphalt concrete.			



Visit Petromat.com for more information.

Contact us toll-free at **800.621.1273**, via our Engineering Services Team Hotline at **423.553.2465**, or email GeoEngineering@PropexGlobal.com to let us help with your next project.



PropexGlobal.com | 800 621 1273 | [f](#) [t](#) [in](#) [y](#)

