

**Construction**

# **SikaQuick 2500**

## **Application Instructions**



**Sika Corporation**

# SikaQuick 2500

## Very Rapid Hardening Repair Mortar

Sika Quick is a 1-component ,rapid hardening, early strength gaining cementitious based material for patching concrete.



## SikaQuick 2500

- ▲ **Where to use:**
- ▲ Use on grade, above and below grade on concrete.
- ▲ Highway overlays and repairs. Quick Turnaround Time.
- ▲ Structural Repair material for concrete roadways, parking structures ,bridges ,dams and ramps.
- ▲ Full depth patching
- ▲ Economical patching material for horizontal repairs of concrete and mortars.



# SikaQuick 25000

Coverage:

▲ SikaQuick 1000 Mortar

Approximately 0.43 cu.ft

▲ SikaQuick 1000 Concrete

When extended with 25 lbs. of 3/8 in gravel approximate yield = 0.6 cu.ft



# SikaQuick 25000

## ▲ Packaging:

50 lb – Multi wall Bag  
40 Bags/Pallet



## Surface Preparation

### Cementitious Substrates:

1. Should be clean and sound.
2. Remove contaminations and bond inhibiting materials from repaired area.
3. Obtain exposed/fractured aggregate surface ~1/8 to 1/4 inch profile (ICRI CSP 6 & above).
4. Substrate must be saturated surface dry (SSD) with no standing water.



# Surface Preparation

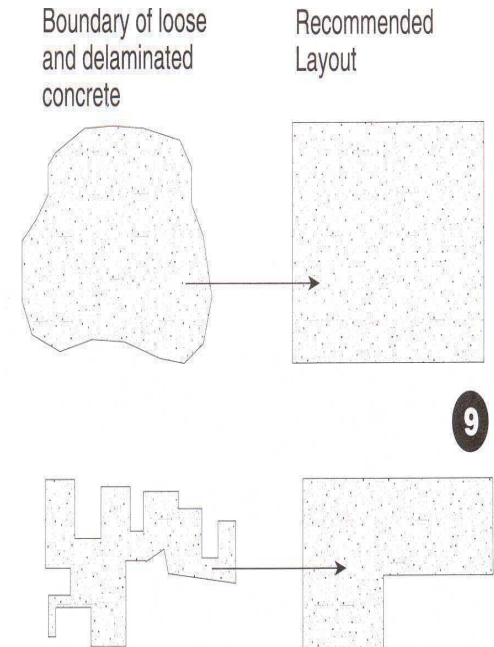
## ▲ Cementitious Substrates:

- Surface should be cleaned and roughened to create a profile.



## Surface Preparation

- ▲ Saw cut around perimeter or repair area to achieve a minimum 1/8" shoulder.
- ▲ This will eliminate feather edging the product and give a clean transition for the repair.

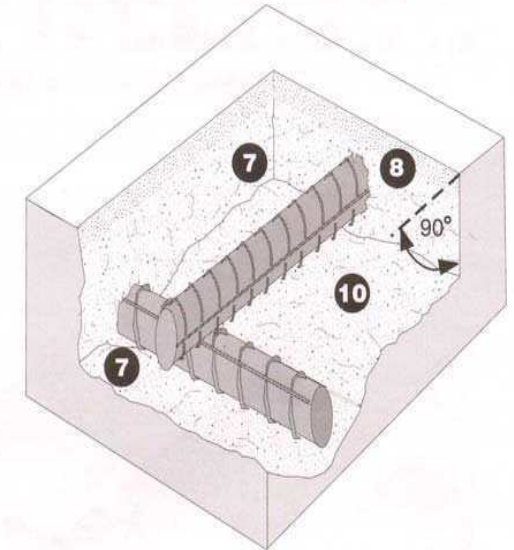




## Surface Preparation

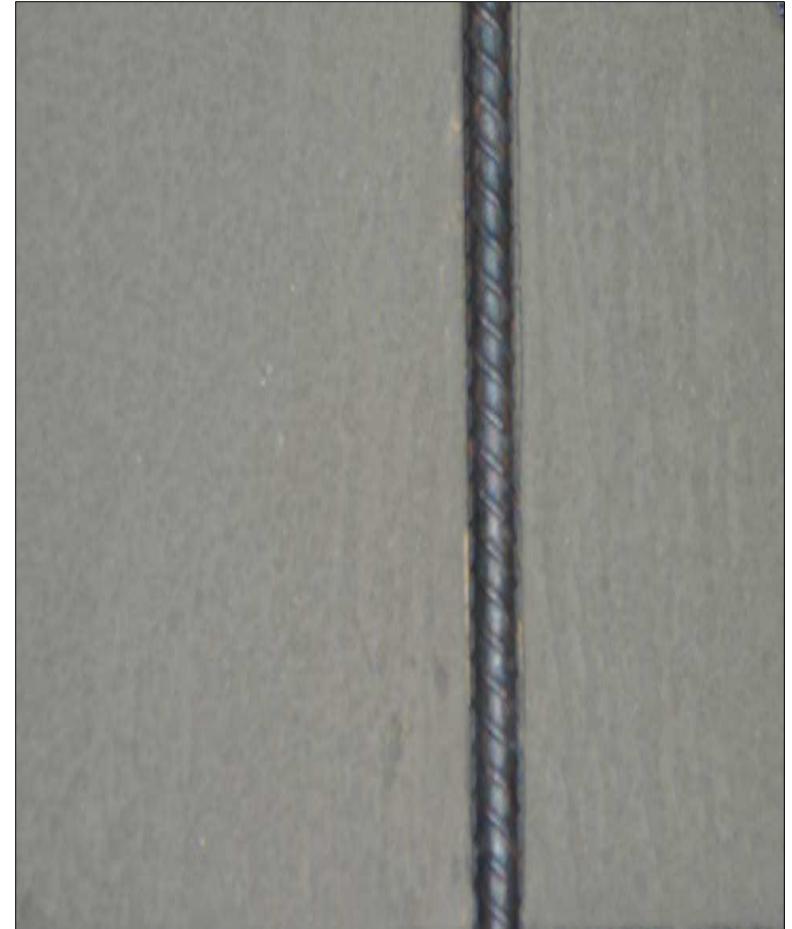
### ▲ Steel:

- Remove all corrosion and contaminants from exposed steel.
- Surface should be cleaned thoroughly by blast cleaning or mechanical means.
- Exposed steel should be cleaned to white steel.
- If half of the diameter is exposed, chip behind bar, 1/2" minimum for mortar only.



## Steel Preparation

- ▲ Steel should be cleaned to a bright metal finish.



## Tools Required

- ▲ ½" Drill Motor
- ▲ Low speed drill  
400-600 rpm
- ▲ Mortar mixer or  
Jiffy mixer
- ▲ Margin trowel
- ▲ Steel/Mag Trowel
- ▲ Spatula



## Surface Preparation

- ▲ Saw cut around perimeter or repair area to achieve a minimum 3/8" shoulder. This will eliminate feather edging the product and give a clean transition for the repair.



## Mixing

### Mixing Equipments

- I. Mortar Mixer
- II. Drill and Paddle.

Wet down tools and equipments before proceeding to mix.





## Mixing- SikaQuick Mortar

1. Water – 5-5.5 Pts/Bag
2. Latex-R- 5-5.5 Pts/Bag.
3. Start with adding liquid to the mixing container.
4. Slowly add powder.
5. Once all the powder is added mix for **3 minutes**.
6. Do not add any more than 5 pts of liquid water.



## Mixing- SikaQuick Concrete

1. Water – 5-5.5 Pts/Bag
2. Latex-R- 5-5.5 Pts/Bag.
3. Stone - 3/8 gravel 25#/bag.
4. Stone – Weigh Before SSD.
5. Start with adding liquid to the mixing container.
6. Slowly add powder.
7. Once all the powder is added and mixed add stone.
8. Mix time **3 minutes** after everything is added.
9. Do not add any more than 5 pts of liquid. water.



# Aggregate Selection & SSD



- ▲ Consult Technical Data Sheets for detailed recommendations on aggregate selection.



## Min / Max application thickness

### ▲ Neat

- Min 1/4 inch
- Max 1 inch

### ▲ Extended

- Min 1 inch
- Max 6 inches



# Scrub/Slurry Coat



# Placement





# Placement



# Finishing



## SikaTop Curing

- ▲ Cure as per ACI recommendations. Curing is required.
- ▲ Moist cure with wet burlap and polyethylene, a fine mist of water.
- ▲ Moist curing should commence immediately after finishing.
- ▲ Protect newly applied material from direct sun light, wind, rain and frost.





# Curing



# SikaQuick 2500

Sika Technical Data Sheets can be obtained via:

[www.sikaconstruction.com](http://www.sikaconstruction.com)

Refer to data sheets for specific information on each Sika product.

