



Construction

Sikadur 55 SLV

Application Instructions



Sika Corporation

Sikadur 55 SLV

- ▲ Epoxy crack healer and penetrating sealer
- ▲ Fast tack-free time
- ▲ 100% solids
- ▲ Super low-viscosity
- ▲ Moisture-tolerant
- ▲ High-strength
- ▲ Two-component



Sikadur 55 SLV

▲ Where to use:

- Structurally repairing cracked concrete
- Interior and above-grade slabs
- Elevated horizontal decks, parking garages and other structures exposed to foot and pneumatic tire traffic



Sikadur 55 SLV

▲ Packaging:

- 3 gal. units (2 gal. 'A' + 1 gal. 'B')

▲ Coverage:

- 1 gal. yields 231 in³



Surface Preparation

- ▲ Surface must be clean and sound.
- ▲ Remove dust, laitance, grease, curing compounds, impregnations, waxes and any other contaminants by mechanical means before application
- ▲ Substrate should be dry for best results
- ▲ Surfaces prepared by Low Pressure Water Cleaning or High Pressure Water Jetting methods should be allowed to dry for 24 hrs. minimum

Tools Required

- ▲ 1/2" drill motor
- ▲ Low speed drill (400-600 rpm)
- ▲ Drill and paddle for mixing
- ▲ Spatula

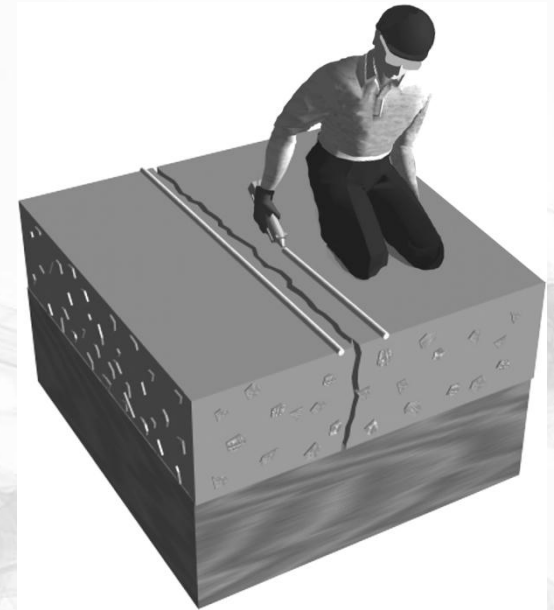


Mixing

- ▲ Mix 1 part Component 'B' to 2 parts Component 'A' by volume into a clean pail
- ▲ Mix thoroughly for 3 minutes with Sika paddle on low-speed (400-600 rpm) drill until uniformly blended
- ▲ Mix only that quantity that can be used within pot life

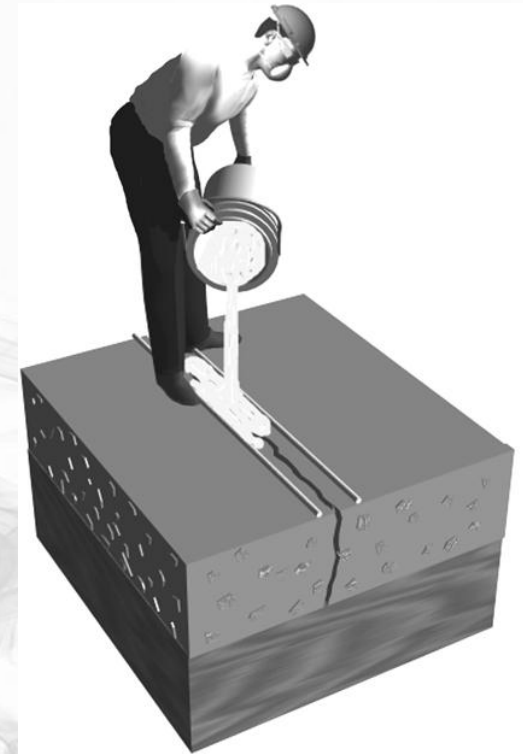
Application

- ▲ **To gravity feed into cracks:**
 - Sikadur 55 SLV is applied to horizontal surfaces by flat squeegee or broom.
 - Spread material over area and allow to pond over cracks.
 - Let material penetrate into cracks and substrate.
 - Remove excess epoxy with roller leaving no visible surface film.
 - For cracks greater than 1/8 in. (3 mm) wide, fill crack with oven-dried sand before applying Sikadur 55 SLV.
 - Seal cracks from underside, when accessible, to prevent leakage.



Application

- ▲ **To gravity feed into cracks:**
 - A second treatment may be required on very porous substrates.
 - Apply second treatment before broadcasting
 - After treatment, wait at least 20 minutes at 73°F (23°C).
 - Cover with broadcast of an oven-dried 20/40 silica sand or similar sand.
 - Distribute evenly over the surface to excess at a rate of 30-40 lbs./100 sq. ft.
 - Allow to cure 6 hours minimum at 73°F (23°C).
 - Remove any loose sand and open to traffic once epoxy has cured.



Application

- ▲ **To pressure-inject cracks**
 - Use automated injection equipment or manual method.
 - Set appropriate injection ports based on system used.
 - Seal ports and cracks with Sikadur 31, Hi-Mod Gel, Sikadur Injection Gel or Sikadur AnchorFix-3/4
 - When the epoxy adhesive has cured, inject Sikadur 55 SLV with steady pressure



Sika Corporation

Precaution

- ▲ Avoid skin and eye contact
- ▲ Wear
 - chemical resistant gloves
 - goggles
- ▲ Ventilate area
- ▲ Dispose of in accordance with local, state and federal regulations
- ▲ Uncured material can be removed with approved solvent
- ▲ Follow manufacturer's warnings and instructions for use

Sikadur 55 SLV

Sika Product Data Sheets can be obtained via:

<http://usa.sika.com>

Refer to data sheets for specific information on each Sika product.

