



**Green Concrete 24h**  
**Wet Concrete 1h**



# Sikaflex® 1cSL and Sikaflex® 1a+

**GET YOUR PROJECT DONE RIGHT AND ON TIME WITH SIKAFLEX®  
POLYURETHANE SOLUTIONS FOR GREEN AND WET CONCRETE**

- Sikaflex® 1cSL for horizontal joints
- Sikaflex® 1a+ for vertical joints
- Sikaflex® 1a+ provides the same great quality as Sikaflex® 1a without the solvent
- Apply to "green" concrete 24 hours after pour
- Apply to wet concrete 60 minutes after rainfall
- No priming required and no special or additional preparation steps needed
- For fast track projects

**Sikaflex® 1a+ available in:**

Cartridge 10 oz.  
Unipack 20 oz.



**Sikaflex® 1cSL available in:**

Cartridge 10 oz. and 29 oz.  
Pail 5 gal.  
Drum 55 gal.



**BUILDING TRUST**



# Sikaflex® 1cSL and Sikaflex® 1a+

## SOLUTIONS FOR GREEN AND WET CONCRETE

### APPLICATIONS

- Saw cut joints
- Formed joints
- Expansion joints on vertical concrete walls
- Perimeter seals

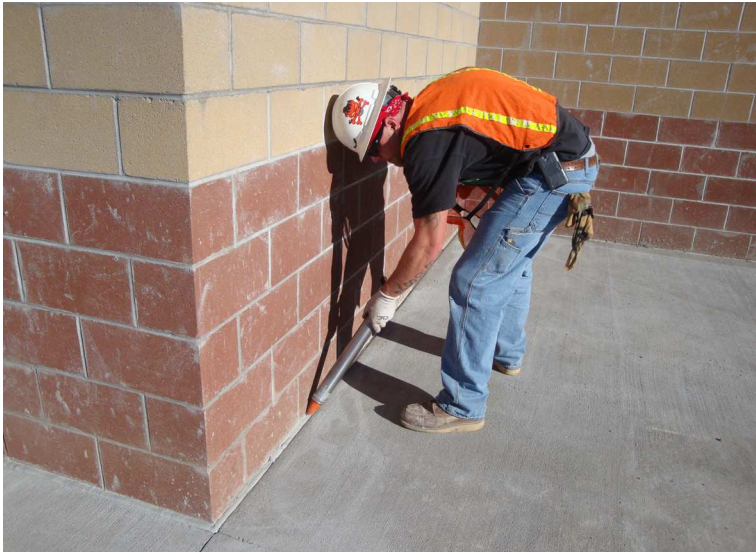
### LITERATURE

- Product Data Sheet
- Material Safety Data Sheet

\*Always refer to Current Product Data Sheet and MSDS for detailed performance specifications prior to use.

### BENEFITS OF SIKAFLEX TECHNOLOGY

- Sealant can be applied on green/new concrete 24 hours after it is poured
- Apply sealant 1 hour after water source (ex. rain, pressure wash, snow melt) has stopped
- Fast track projects can be completed on time
- Sikaflex 1a+ solvent free
- Sikaflex 1a+ provides same great quality as Sikaflex 1a.



**Note:** Advice on specific applications is available from the Technical Service Department of Sika Construction Products Division.

## FOR MORE INFORMATION:

Contact Sika: Phone 800.933.SIKA(7452) Website: [www.sikausa.com](http://www.sikausa.com)

**Sika Corporation**  
201 Polito Avenue  
Lyndhurst, NJ 07071  
Phone: 201-933-8800  
Fax: 201-933-6225



**BUILDING TRUST**

