

Fact Sheet



Sikagard® Flex Coat System

Flex Coat

Cement-based, flexible, waterproofing material

Flex Coat ATC

Acrylic Top Coat

Flex Coat EM

Embedding Mesh



APPLICATIONS

- ▲ Balcony deck resurfacing
- ▲ Concrete exterior restoration
- ▲ Sidewalk resurfacing
- ▲ Wall refinishing and installation coating
- ▲ Stadium renovation
- ▲ Swimming pool walkways

ADVANTAGES

- ▲ Can be applied over almost any clean surface, i.e. concrete, block, masonry, etc. for a various floor, wall, and roof uses
- ▲ Superior adhesion coupled with ability to withstand prolonged pedestrian and light vehicular traffic
- ▲ Waterproof coating reduces or prevents water penetration freeze-thaw scaling and concrete carbonation
- ▲ Surpasses performance of conventional cementitious coatings
- ▲ Breathable coating releases normal entrapped vapor without loosening or blistering.
- ▲ Available in natural cement color

TYPICAL DATA

Sikagard Flex Coat

- ▲ **Adhesion (ASTM C-882), Type I**
515 psi
- ▲ **Absorption** - weight gain by 4" coated concrete cube after 21 days water immersion
< 2%
- ▲ **Weathering (ASTM G23) Weatherometer** -
Method 1 procedure, 60 cycles No visible degradation
- ▲ **Compressive Strength (ASTM C-109)** 2,440 psi
- ▲ **Tensile Strength (ASTM C-190)** 430 psi
- ▲ **Elongation (ASTM D-412)** 12%
- ▲ **Shore Hardness (ASTM D-2240)** Durometer "A" - 82
- ▲ **Water Vapor Permeability (E-96)** 1.96 perms/inches
- ▲ **Resistance to Wind-Driven Rain**
Fed Spec. TT-C-558 (8 hrs.) & TT-P-0035 (24 hrs.)
At 5" water pressure and 60 gal./hr. water flow
No water or dampness noted on back of test panels

Sikagard Flex Coat ATC

- ▲ **Gloss 60 Gloss Meter** 90+
- ▲ **Cleaning Solvent** water
- ▲ **Physical Properties**
Flexibility - Excellent; **Weather** - Excellent; **Abrasion** - Excellent
- ▲ **Curing Time (77F)**
Dry to touch - 1 hr.; **Recoat** - 4 hrs.; **Traffic** - 24 hrs.
- ▲ **Color Retention** No fading or deleterious effect. Atlas Twin-Arc Weatherometer, 20 min. Cycle; 17 min. Dry - 3 min.; Wet - 300 hrs.
- ▲ **Accelerated Ultraviolet Light Exposure**
No fading or visible deleterious effect under 10x magnification. Desert Sunshine Exposure Test, Inc., Phoenix, AZ "Procedure EMMA" (mirror accelerated exposure).

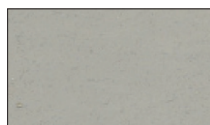
Sikagard® Flex Coat System

Two-component, polymer-modified, cement-based waterproofing system



1. A 55 lb. bag is mixed with 2.5 gal. of liquid.
2. A notch squeegee being used to apply the first coat.
3. A roller being used to apply the second coat.
4. Sikagard Flex Coat ATC (Bright Gray) used as a finish coat for an aesthetically pleasing appearance.

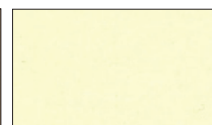
Available in the colors below



Bright Gray



Adobe



Ivory Cream

The above colors are only a representation of the actual color.
Use cured product sample for color matching.

Contact Sika at:
Phone: 1-800-933-SIKA (Nationwide)
Website: www.sikaconstruction.com

Sika Corporation
201 Polito Avenue
Lyndhurst, NJ 07071
Phone: 201-933-8800
Fax: 201-933-6225

Sika Canada Inc.
601 Delmar Avenue
Pointe Claire
Quebec H9R 4A9
Phone: 514-697-2610
Fax: 514-694-2792



Sika Mexicana S.A. de C.V.
Carretera Libre Celaya Km. 8.5
Fracc. Industrial Balvanera
Corregidora, Queretaro
C.P. 76920
Phone: 52 442 2385800
Fax: 52 442 2250537