



Sikalastic® - 720 One Shot

TWO-COMPONENT, INTEGRAL TEXTURE, FAST CURING, EXTREMELY DURABLE, ONE STEP POLYURETHANE TRAFFIC COATING SYSTEM.

- Integral Texture for superior durability.
- Achieves a 45 mil system in one single coat application.
- Waterproof & Protect in ONE SHOT.
- Fast Turnaround - Open to traffic in 36 hours!
- SIMPLE, EASY & FAST!

BUILDING TRUST



Sikalastic® - 720 One Shot

TWO-COMPONENT, INTEGRAL TEXTURE, FAST CURING, EXTREMELY DURABLE, ONE STEP POLYURETHANE TRAFFIC COATING SYSTEM.

DESCRIPTION

Sikalastic®-720 One Shot is a two-component, integral texture, fast-curing, aliphatic, chemically cured, elastomeric polyurethane waterproofing coating intended for vehicular and pedestrian traffic. Applied in one single step the Sikalastic®-720 One Shot replaces the standard systems of primer, base coat and multiple topcoats.

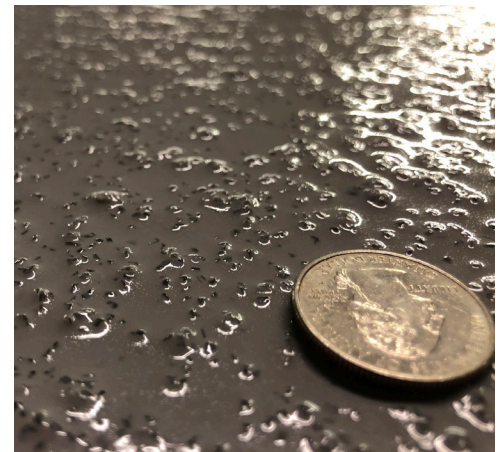
Product Technology

TWO-COMPONENT, INTEGRAL TEXTURE, FAST CURING, EXTREMELY DURABLE, ONE STEP POLYURETHANE TRAFFIC COATING SYSTEM.

Typical Data (Material and curing conditions @ 73 °F (23 °C) and 50% RH)	Sikalastic 720 One Shot
Tensile Strength (ASTM D-412)	2400 psi +/- 100
Tear Strength (ASTM D-624)	300 lbf/in
Shore A Hardness (ASTM D-2240)	90+/- 5
Elongation at Break (ASTM D-412)	500 % +/- 50%
Layer Thickness	45 mils dry

APPLICATIONS

- Sikalastic®-720 One Shot may only be used by experienced professionals
 - Multi-story parking garages
 - Parking decks and ramps
 - Foot bridges and walkways
 - Mechanical rooms
 - Stadiums and arenas
 - Plaza and rooftop decks



FOR MORE INFORMATION:

Contact Sika: Phone 800.933.SIKA(7452) Website: www.usa.sika.com

Sika Corporation
201 Polito Avenue
Lyndhurst, NJ 07071
Phone: 201-933-8800
Fax: 201-933-6225



BUILDING TRUST

