

New Post Base Sized for Double 2x Lumber



Right-size solution for attaching smaller posts to existing concrete

A new size is now available in the ABA adjustable post base line for attaching double 2x posts to existing concrete. It's the first post base designed specifically for double 2x lumber. It's an ideal solution for installing a structural post consisting of two 2x4 studs nailed together. This new size can also be used for securing double 2x beams to a footing for ground-level decks.

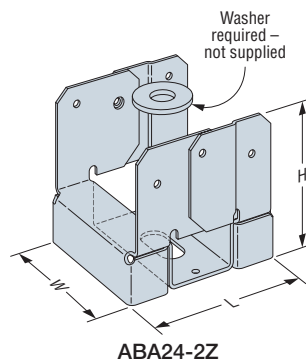
Like the existing ABA model sizes, ABA24-2Z features a built-in 1" standoff to help prevent rot at the end of the post. It has a slotted anchor hole in the base for adjustability, making precise post placement easier when securing it to the foundation. The post attaches to the ABA24-2Z post base with nails (0.148" x 3") or Strong-Drive® SD Connector screws (#9 x 2½"). This versatile post base is a cost-effective option for securing a post to concrete.

Key features:

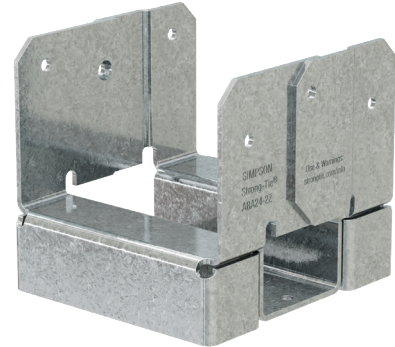
- First post base sized for double 2x, eliminating additional shim material
- Slotted hole for anchor, allowing for lateral adjustability
- Corrosion-resistant coating for exterior use

Material: 16 gauge

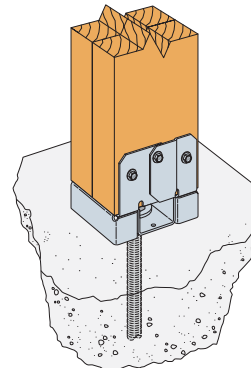
Finish: ZMAX® coating



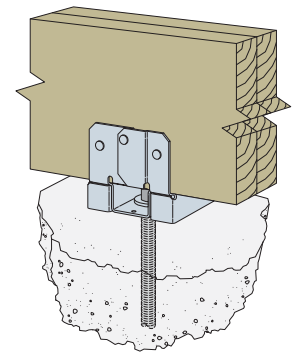
ABA24-2Z



ABA24-2Z



Typical ABA24-2Z Post Installation



ABA24-2Z Beam Installation

Allowable Loads — Post

Model No.	Nominal Post Size	Material (ga.)	Dimensions (in.)			Fasteners (in.)		Allowable Loads (DF/SP)		Allowable Loads (SPF/HF)	
			W	L	H	Anchor Dia.	Post	Uplift (160)	Down (100)	Uplift (160)	Down (100)
ABA24-2Z	Double 2x4	16	3⅞	3⅞	3⅞	½	(6) 0.148 x 3	630	5,925	545	5,260
						½	(6) SD9212	685	5,925	590	5,260

1. Uplift loads have been increased for earthquake or wind loading with no further increase allowed. Reduce where other loads govern.
2. Downloads may not be increased for short-term loading.

3. Specifier is to design concrete and anchorage for uplift loads.
4. **Fasteners:** Nail dimensions are listed diameter by length. See *Wood Construction Connectors* catalog for fastener information.

Allowable Loads — Beam

Model No.	Nominal Beam Size	Material (ga.)	Dimensions (in.)			Fasteners (in.)		Allowable Loads (DF/SP)		Allowable Loads (SPF/HF)	
			W	L	H	Anchor Dia.	Beam	Uplift (160)	Down (100)	Uplift (160)	Down (100)
ABA24-2Z	Double 2x	16	3⅞	3⅞	3⅞	½	(6) 0.148 x 3	640	4,425	585	3,140
						½	(6) SD9212	725	4,335	625	3,060

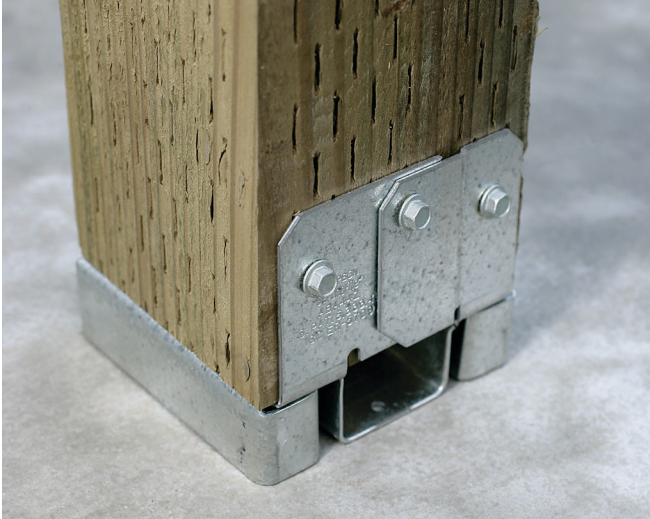
1. Uplift loads have been increased for earthquake or wind loading with no further increase allowed. Reduce where other loads govern.
2. Downloads may not be increased for short-term loading.

3. Specifier is to design concrete and anchorage for uplift capacity.
4. **Fasteners:** Nail dimensions are listed diameter by length. See *Wood Construction Connectors* catalog for fastener information.

ABA Adjustable Post Bases



This new ABA24-2Z post base extends the line of ABA adjustable post bases. Additional sizes, for both rough and nominal lumber, include 4x4, 4x6 and 6x6. All models of the ABA are designed to attach wood posts to existing concrete, providing a cost-effective option for securing a post to the foundation.

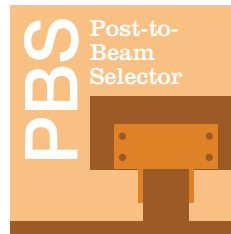


ABA44Z with Strong-Drive® SD Connector Screws



Connector Selector™ (CS)

Our Connector Selector software, which includes the ABA post base, tells you which products are appropriate for your connection, then sorts them by least installed cost. The built-in Job List can track your projects and print a shopping list, including nails. Available at strongtie.com/software.



Post-to-Beam Selector (PBS)

Find post-to-beam connection solutions that fit your exact specification with the assistance of 3D visualization. Product results can be sorted and filtered by installed cost, material or coating. Available at strongtie.com/software.

Related Products

We offer multiple options for the secure install of your ABA connector, which include anchors, fasteners and adhesives that are approved for outdoor use.



Strong-Drive® SD
CONNECTOR Screws



Titen HD®
Mechanically Galvanized Anchor



SET-3G™ High-Strength
Epoxy Adhesive



LCE4 Post Cap

For more information, visit strongtie.com.