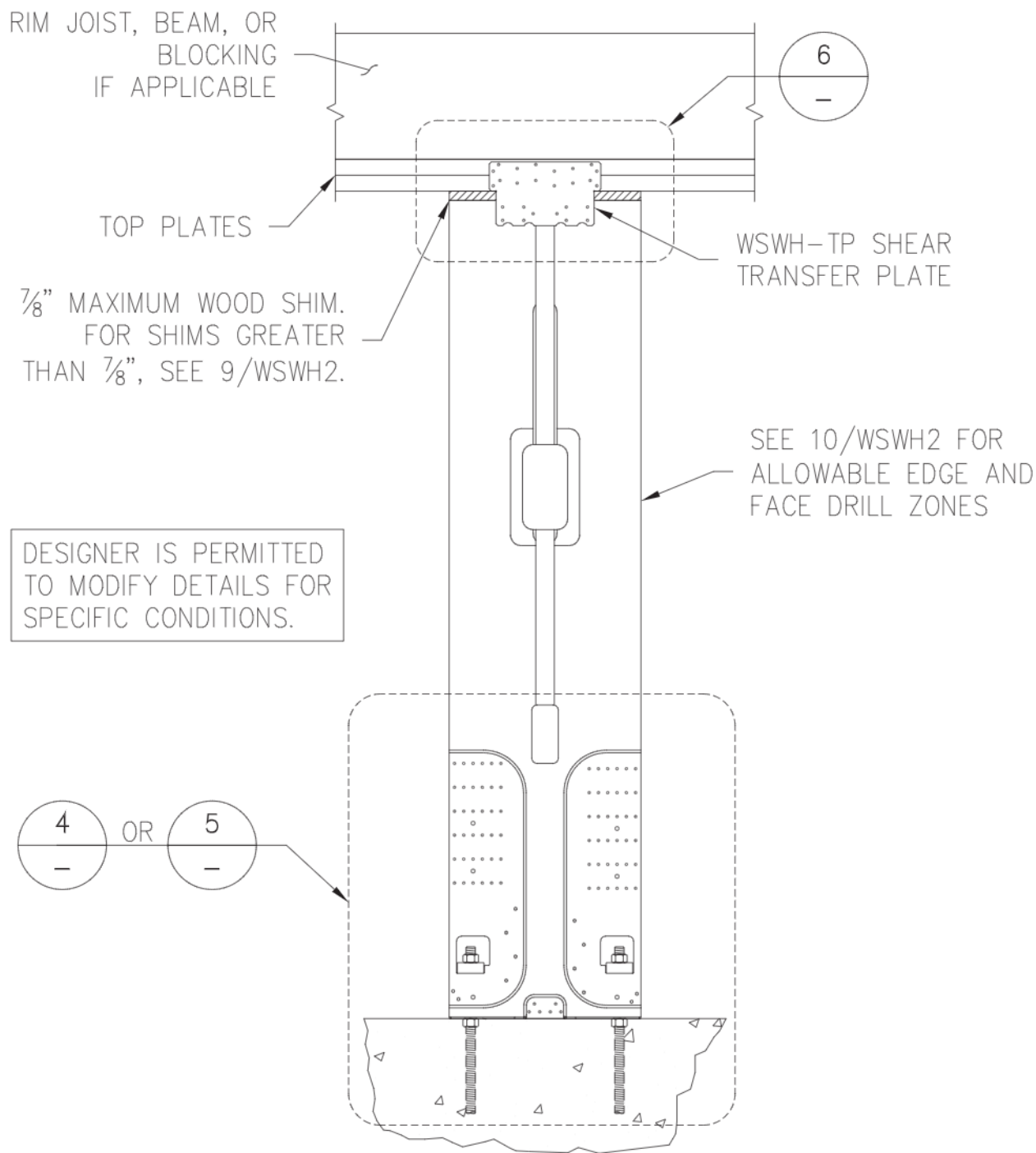


## Structural Installation Details

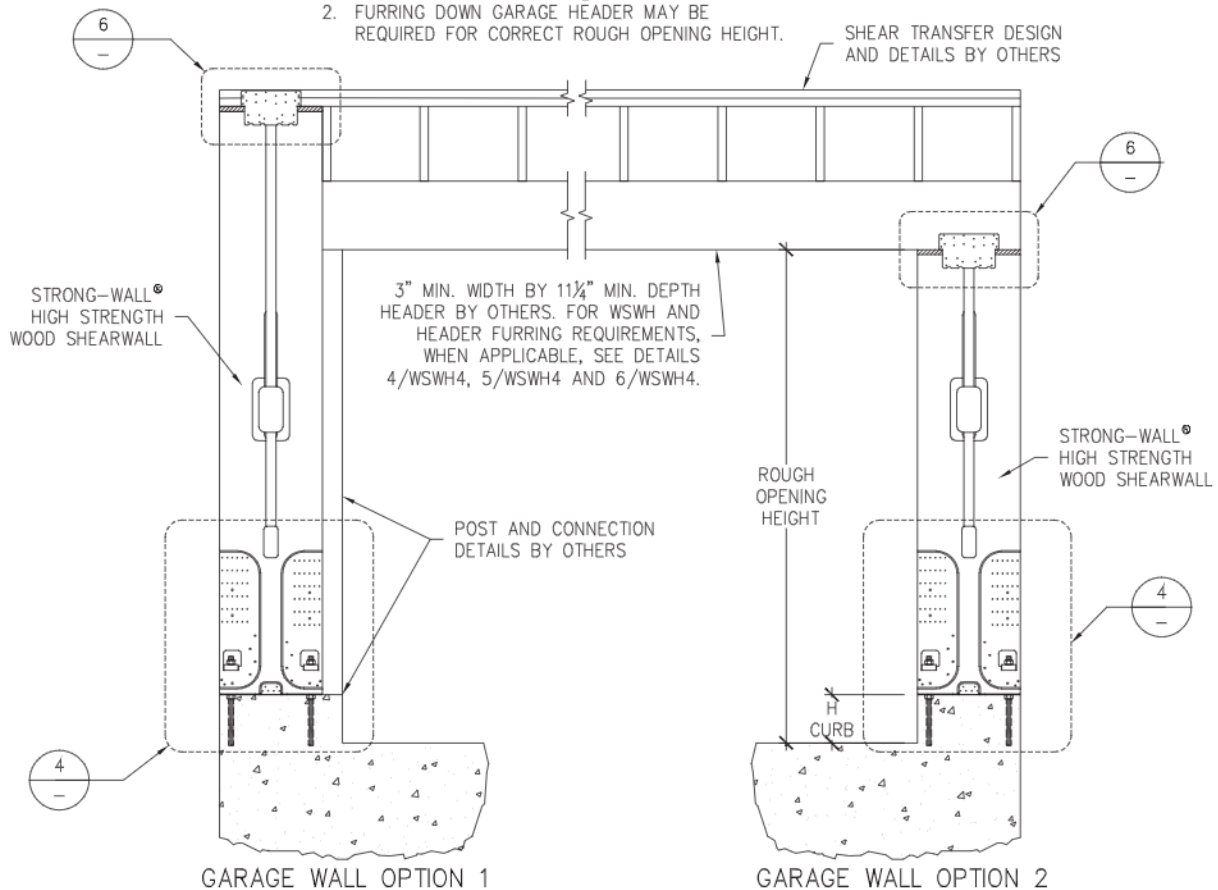


# Structural Installation Details

GARAGE HEADER ROUGH OPENING HEIGHT			
MODEL NO.	TRIMMED PANEL HEIGHT	H CURB	ROUGH OPENING HEIGHT
WSWH12x7	78"	5½"	6'-11½"
WSWH18x7		6"	7'-0"
WSWH24x7			
WSWH12x8	85½"	0"	7'-1½"
WSWH18x8	93¼"	5½"	8'-2¾"
WSWH24x8		6"	8'-3¼"

## NOTES :

1. IF REQUIRED ROUGH OPENING HEIGHT EXCEEDS TABLE VALUE, SPECIFY NEXT TALLER PANEL AND TRIM AS NECESSARY. THE STRONG-WALL® HIGH STRENGTH WOOD SHEARWALL MAY BE TRIMMED TO A MINIMUM HEIGHT OF 74½".
2. FURRING DOWN GARAGE HEADER MAY BE REQUIRED FOR CORRECT ROUGH OPENING HEIGHT.



DESIGNER IS PERMITTED TO MODIFY DETAILS FOR SPECIFIC CONDITIONS.

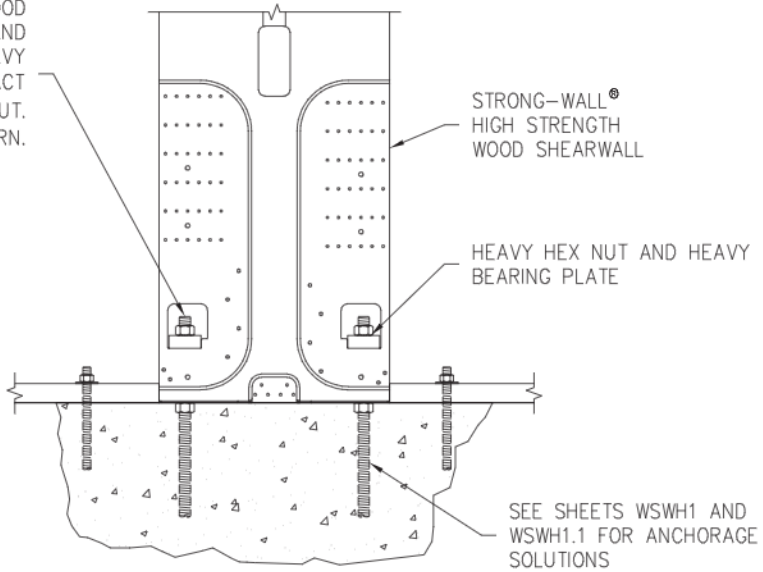
WHEN WSWH-PS STRAPS OMITTED, ALLOWABLE SHEAR VALUES FOR STANDARD PANEL APPLY.

FOR GARAGE WALL OPTION 2, DESIGNER SHALL DESIGN AND DETAIL FOR:

1. SHEAR TRANSFER
2. OUT-OF-PLANE LOADING EFFECT
3. INCREASED OVERTURNING AND DRIFT DUE TO ADDITIONAL HEIGHT

# Structural Installation Details

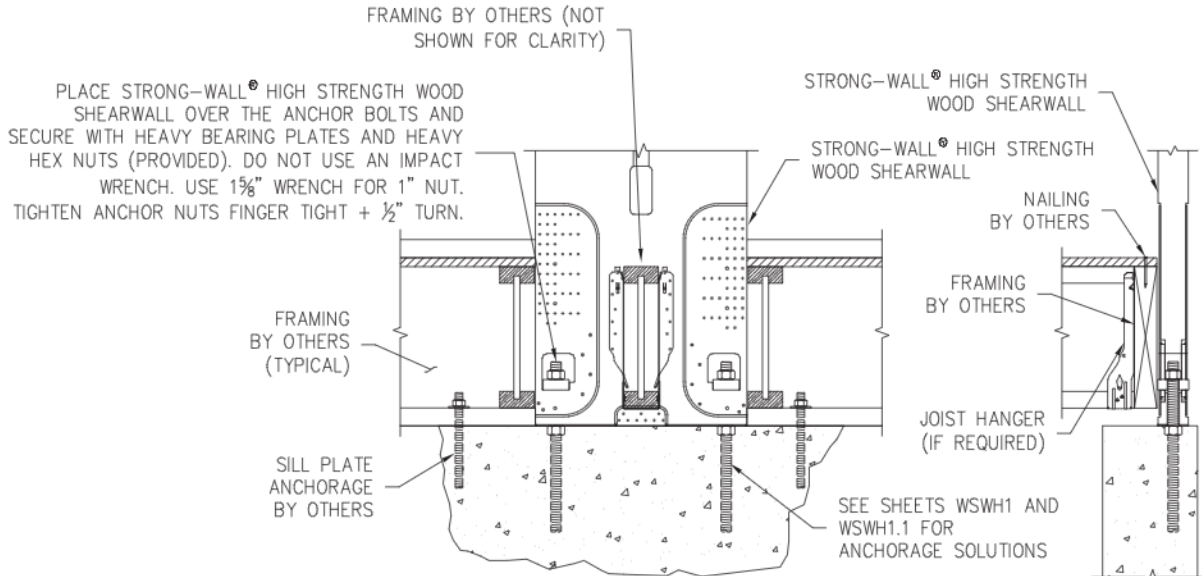
PLACE STRONG-WALL® HIGH STRENGTH WOOD SHEARWALL OVER THE ANCHOR BOLTS AND SECURE WITH HEAVY BEARING PLATES AND HEAVY HEX NUTS (PROVIDED). DO NOT USE AN IMPACT WRENCH. USE 1 $\frac{5}{8}$ " WRENCH FOR 1" NUT. TIGHTEN ANCHOR NUTS FINGER TIGHT +  $\frac{1}{2}$ " TURN.



DESIGNER IS PERMITTED TO MODIFY DETAILS FOR SPECIFIC CONDITIONS.

## STANDARD INSTALLATION BASE CONNECTION

4/WSWH2



STRONG-WALL® HIGH STRENGTH WOOD SHEARWALL HEIGHT TO INCLUDE THE DEPTH OF THE FLOOR SYSTEM AND SHALL BE INSTALLED DIRECTLY ON THE FOUNDATION. SPECIFY PANEL HEIGHT FROM TOP OF FOUNDATION TO UNDERSIDE OF TOP PLATES OR BEAM.

DESIGNER IS PERMITTED TO MODIFY DETAILS FOR SPECIFIC CONDITIONS.

SECTION

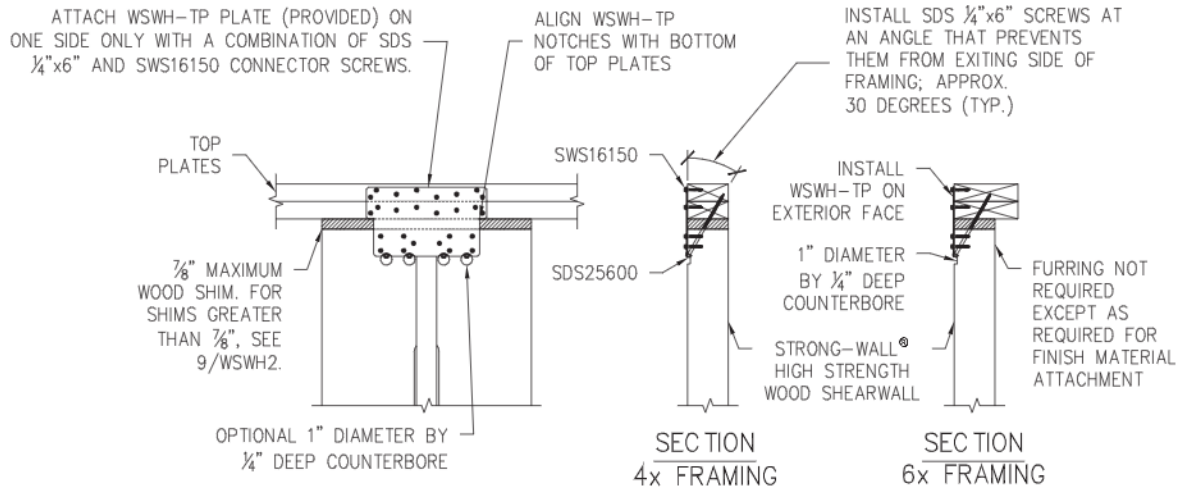
## WOOD FLOOR SYSTEM BASE CONNECTION

5/WSWH2

# Structural Installation Details

MODEL NO.	FASTENER QUANTITY	
	SWS16150	SDS25600
WSWH-TP12	14	2
WSWH-TP18	26	4
WSWH-TP24	46	8

DESIGNER IS PERMITTED TO MODIFY DETAILS FOR SPECIFIC CONDITIONS.

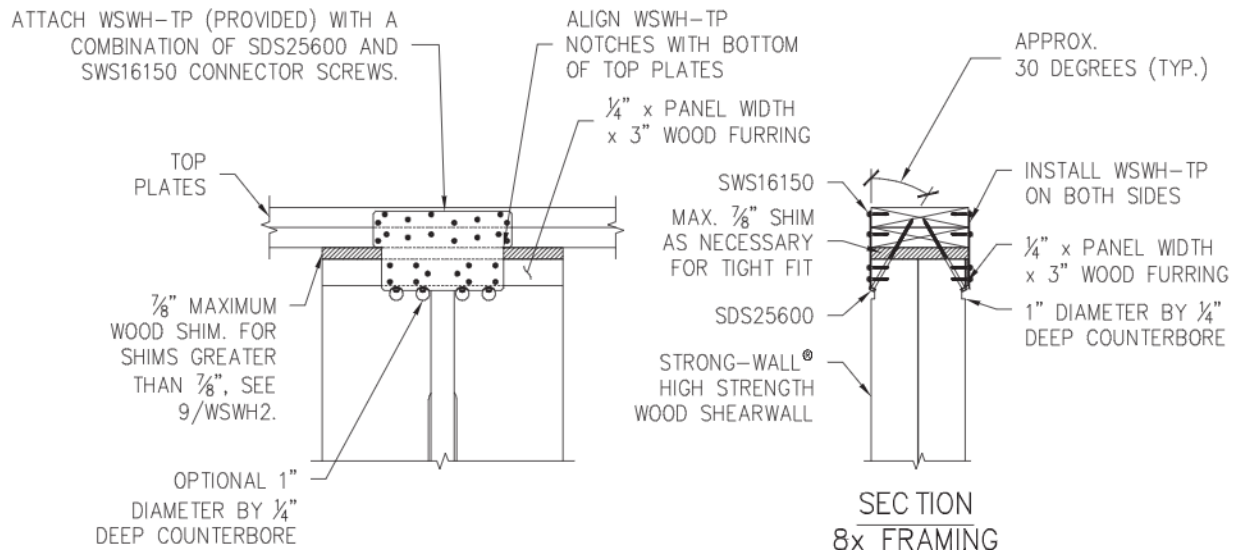


## TOP CONNECTION

6/WSWH2

MODEL NO.	FASTENER QUANTITY	
	SWS16150	SDS25600
WSWH-TP12	28	4
WSWH-TP18	52	8
WSWH-TP24	92	16

DESIGNER IS PERMITTED TO MODIFY DETAILS FOR SPECIFIC CONDITIONS.



## BACK-TO-BACK TOP CONNECTION

7/WSWH2

# Structural Installation Details

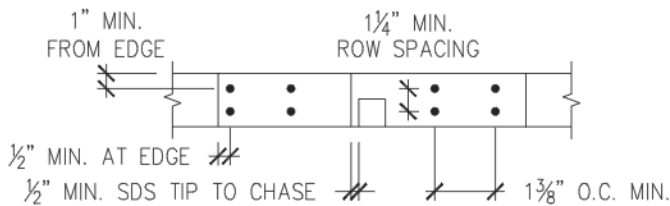
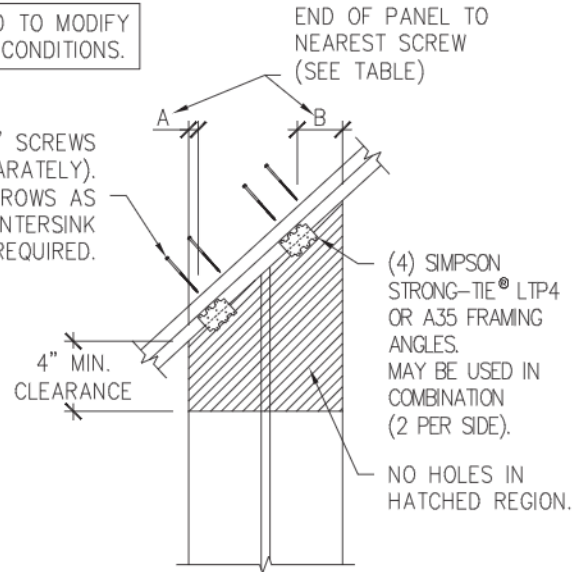
QTY. OF SDS ¼"x6" SCREWS REQ'D.	
WSWH12	4
WSWH18	8
WSWH24	16

DESIGNER IS PERMITTED TO MODIFY DETAILS FOR SPECIFIC CONDITIONS.

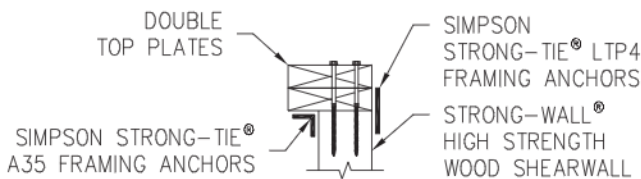
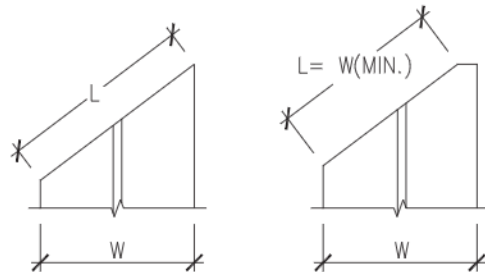
EDGE DISTANCE FOR SCREWS		
SLOPE	A (in.)	B (in.)
0:12-4:12	2	3
5:12-8:12	1½	4½
9:12-12:12	1½	5½

## NOTES :

1. MAINTAIN END DISTANCES TO PREVENT SCREWS FROM PENETRATING THROUGH THE OUTER EDGES.
2. INSTALL SCREWS PERPENDICULAR TO THE TOP PLATE.
3. EDGE DISTANCES ASSUME DOUBLE TOP PLATE.



PLAN VIEW  
SDS SCREW SPACING



SECTION VIEW  
2X6 OR WIDER FRAMING

## INSTALLATION NOTES :

1. ACTUAL CUT LENGTH (L) MUST BE GREATER THAN OR EQUAL TO PANEL WIDTH (W).
2. THIS DETAIL APPLICABLE FOR SLOPES UP TO 12:12.
3. PANELS TALLER THAN 12' MUST BE DESIGNED FOR THE APPLICATION.

# Structural Installation Details

LTP4 SPACING  
BY OTHERS

4x SHIM  
BLOCK

FOR 8" TO 12" BLOCK DEPTHS:

ATTACH SIMPSON STRONG-TIE® CS16 STRAPS AT  
EDGE OF WSWH PANEL (EACH SIDE) USING 0.148x1½" NAILS

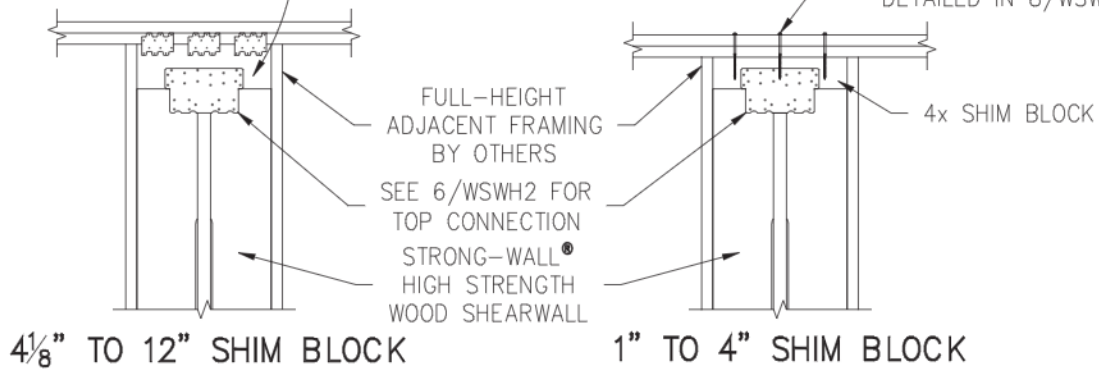
SHIM BLOCK HEIGHTS GREATER THAN 8" AND UP TO 10":

- 8 NAILS INTO BLOCK
- 8 NAILS INTO WSWH PANEL

SHIM BLOCK HEIGHTS GREATER THAN 10" AND UP TO 12":

- 10 NAILS INTO BLOCK
- 10 NAILS INTO WSWH PANEL

INSTALL SDS ¼"x6" SCREWS  
(MIN.) FROM THE TOP SIDE  
OF THE PLATES PER QTY.  
AND SPACING REQUIREMENTS  
DETAILED IN 8/WSWH2.



4 1/8" TO 12" SHIM BLOCK

1" TO 4" SHIM BLOCK

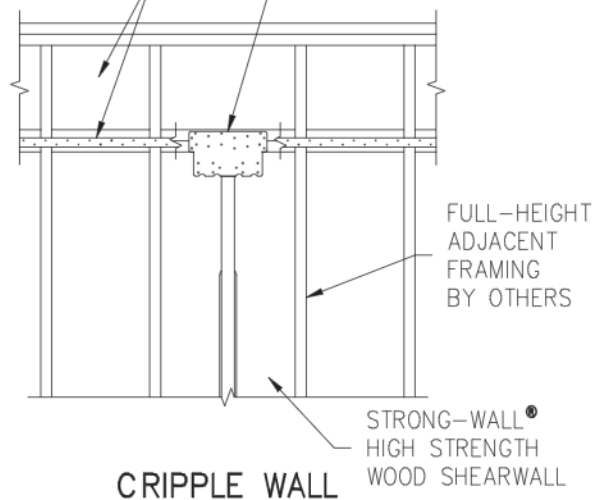
CRIPPLE SHEARWALL, BLOCKING  
AND STRAP BY OTHERS

SEE 6/WSWH2 FOR TOP  
CONNECTION

DESIGNER SHALL DESIGN AND DETAIL  
FOR:

1. SHEAR TRANSFER
2. OUT-OF-PLANE LOADING EFFECT
3. INCREASED OVERTURNING AND  
DRIFT DUE TO ADDITIONAL HEIGHT

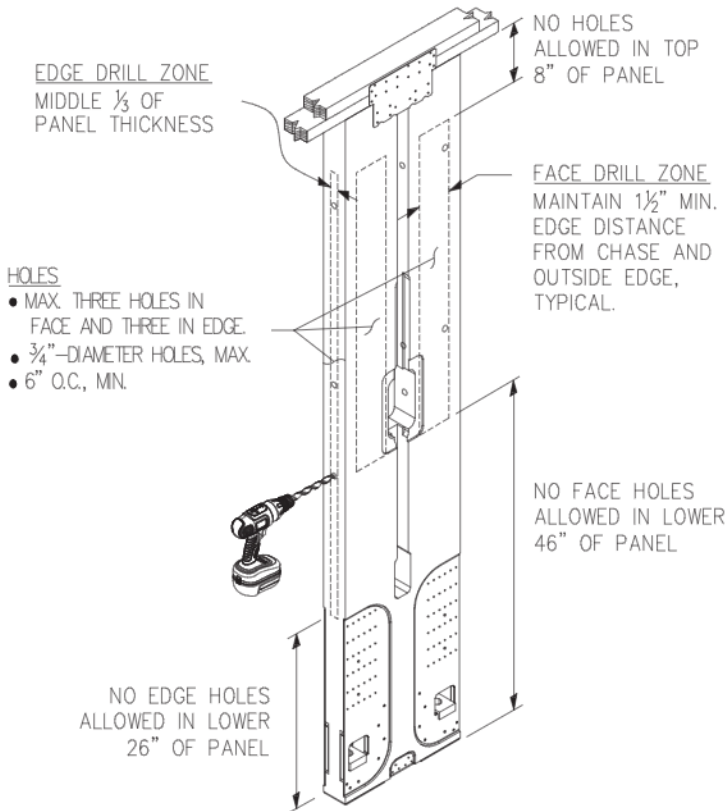
DESIGNER IS PERMITTED TO MODIFY  
DETAILS FOR SPECIFIC CONDITIONS.



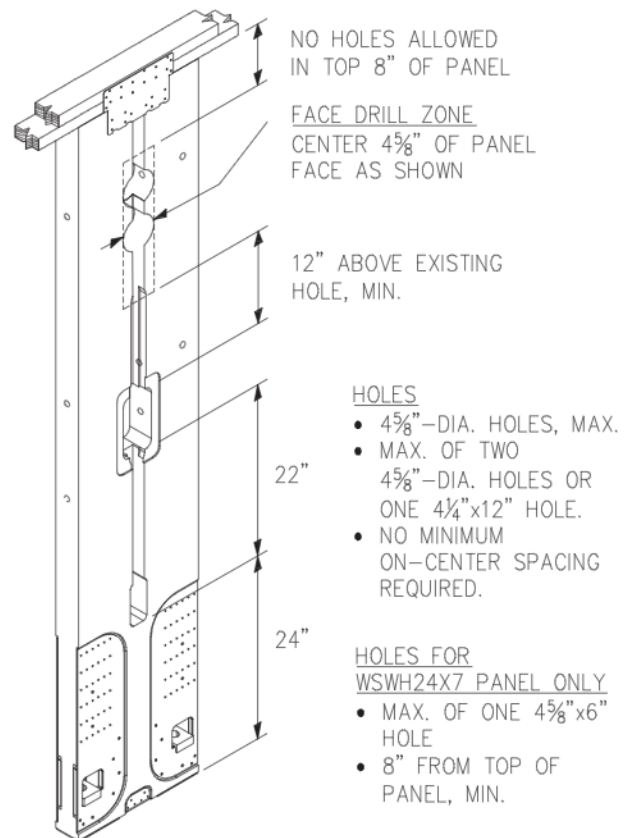
CRIPPLE WALL

STRONG-WALL®  
HIGH STRENGTH  
WOOD SHEARWALL

## Structural Installation Details



ALLOWABLE SMALL HOLES  
FACE AND EDGE DRILL ZONES



ALLOWABLE LARGE HOLES  
IN ADDITION TO ALLOWABLE  
SMALL HOLES



# Structural Installation Details

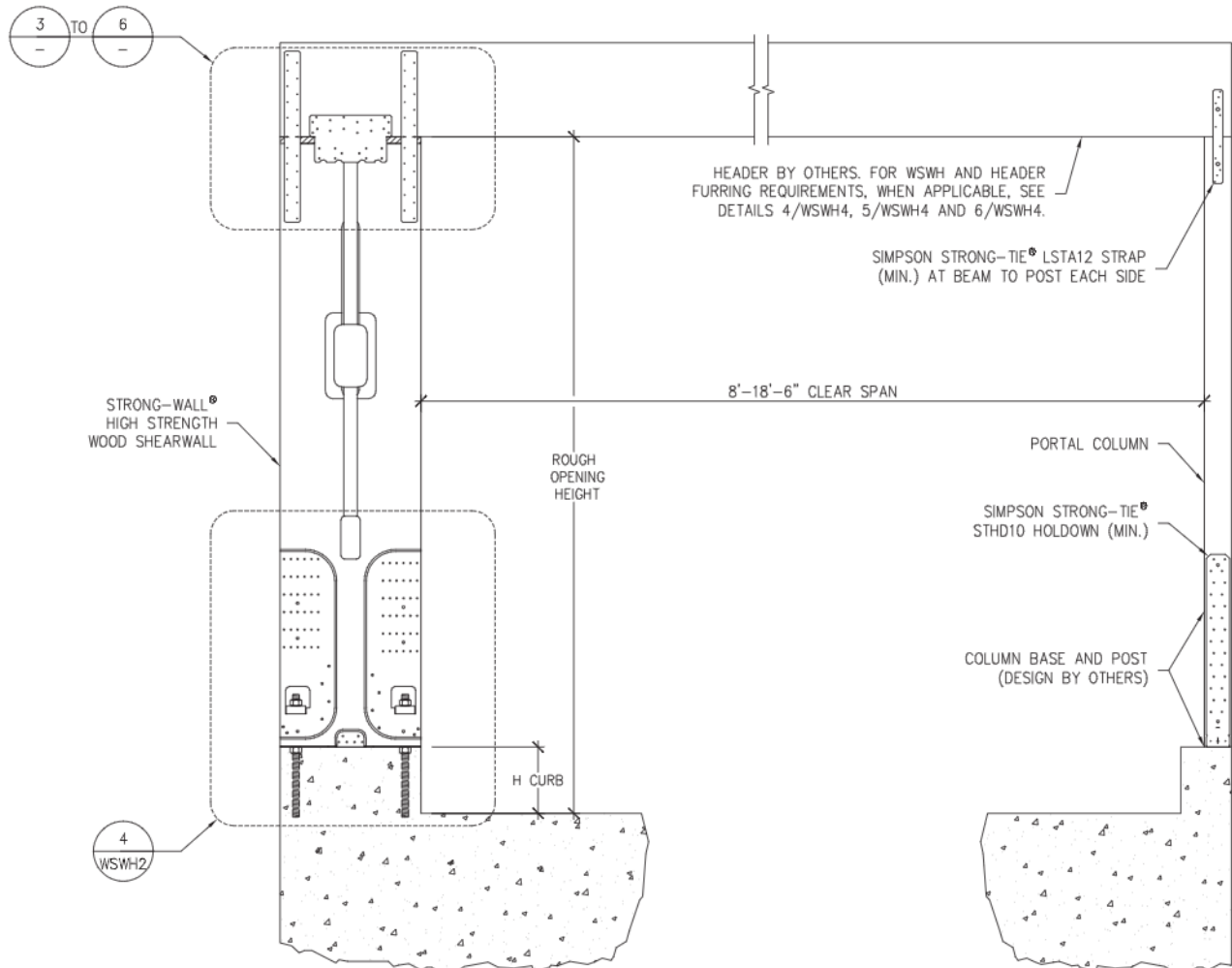
GARAGE HEADER ROUGH OPENING HEIGHT			
MODEL NO.	TRIMMED PANEL HEIGHT	H CURB	ROUGH OPENING HEIGHT
WSWH12x7 WSWH18x7 WSWH24x7	78"	5½"	6'-11½"
		6"	7'-0"
WSWH12x8 WSWH18x8 WSWH24x8	85½"	0"	7'-1½"
	93¼"	5½"	8'-2¾"
		6"	8'-3¼"

DESIGNER IS PERMITTED TO MODIFY  
DETAILS FOR SPECIFIC CONDITIONS.

## NOTES :

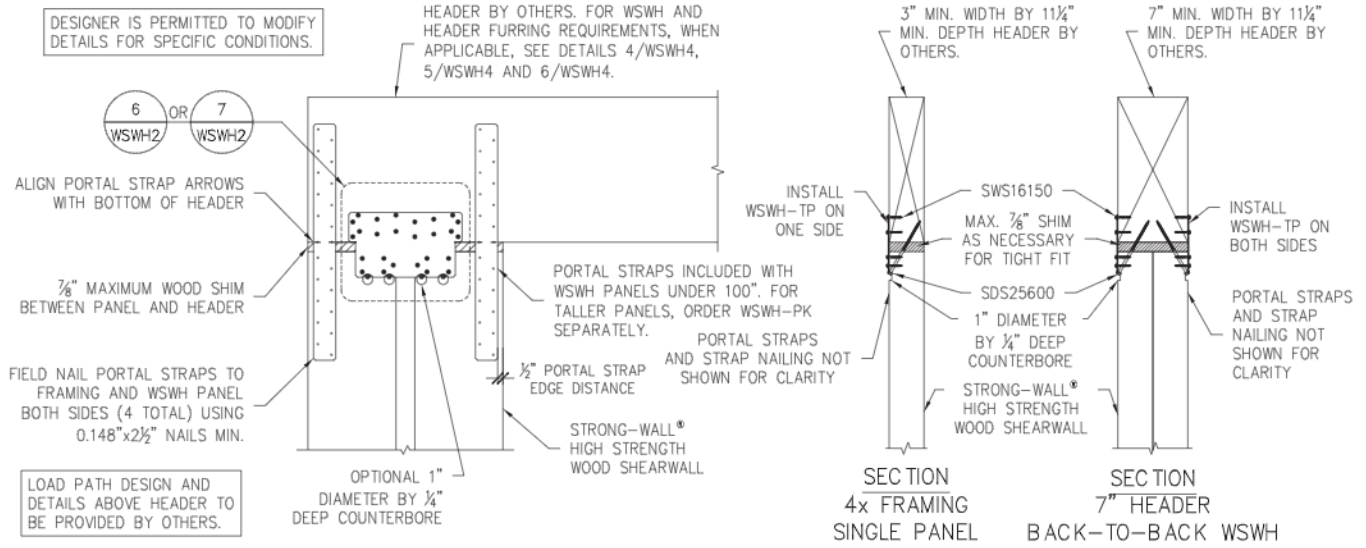
1. IF REQUIRED ROUGH OPENING HEIGHT EXCEEDS TABLE VALUE, SPECIFY NEXT TALLER PANEL AND TRIM AS NECESSARY. THE STRONG-WALL® HIGH STRENGTH WOOD SHEARWALL MAY BE TRIMMED TO A MINIMUM HEIGHT OF 74½".
2. FURRING DOWN GARAGE HEADER MAY BE REQUIRED FOR CORRECT ROUGH OPENING HEIGHT.

ENSURE CONCRETE IS LEVEL AND  
SMOOTH BENEATH PANEL. GRIND OR  
FILL AS NECESSARY.



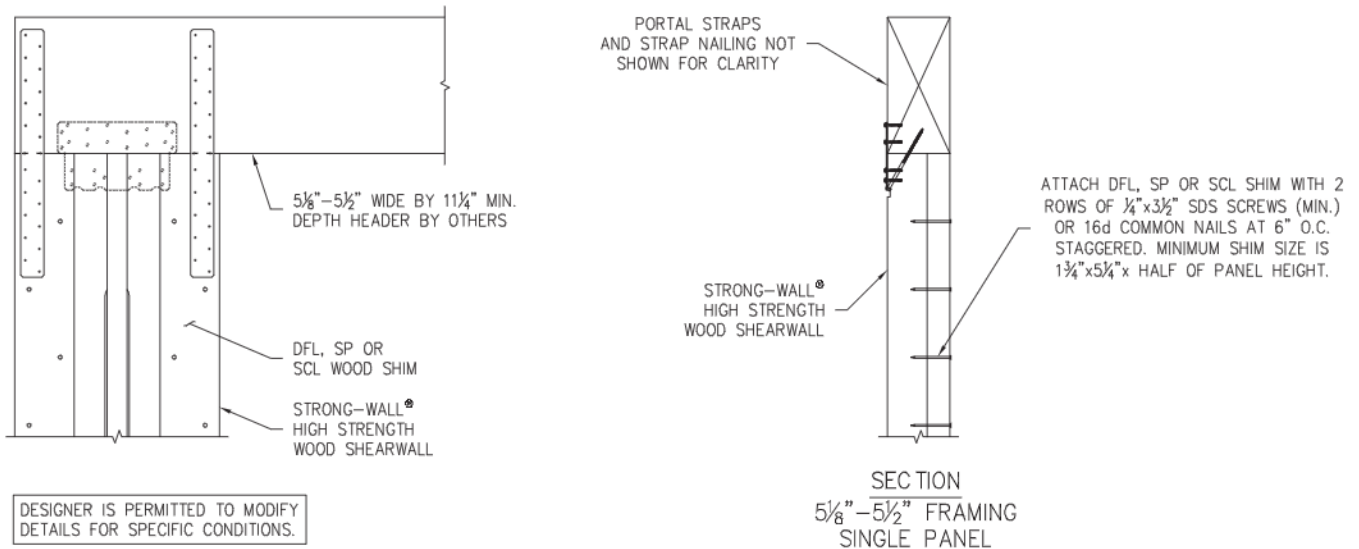


# Structural Installation Details



## PORTAL TOP CONNECTION

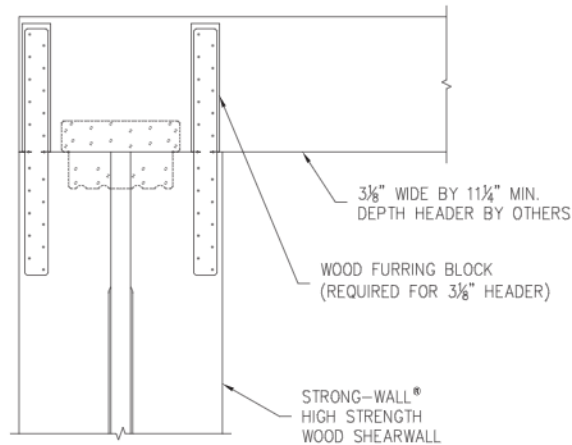
3/WSWH4



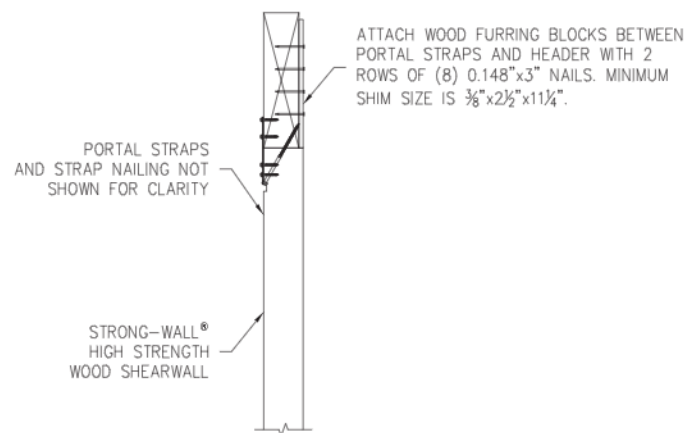
## FURRING FOR 5 1/8" TO 5 1/2" HEADER

4/WSWH4

# Structural Installation Details



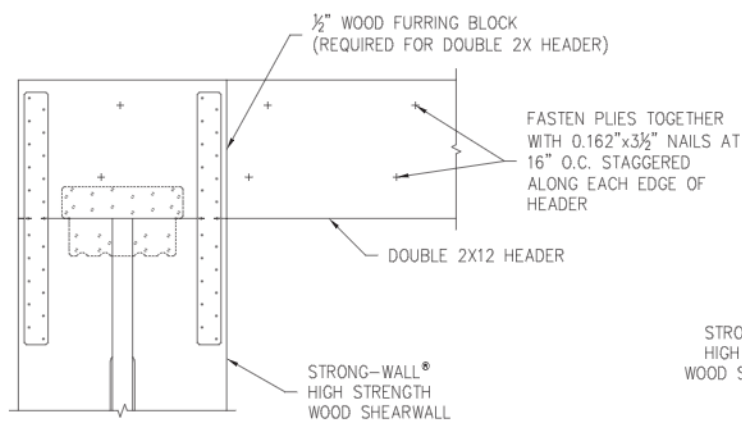
DESIGNER IS PERMITTED TO MODIFY  
DETAILS FOR SPECIFIC CONDITIONS.



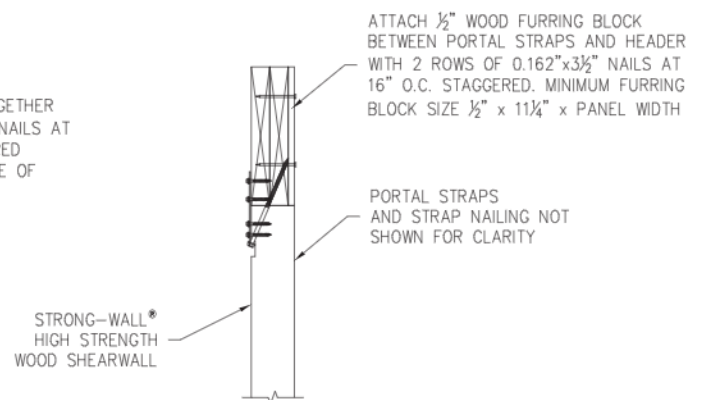
SECTION  
3/8" FRAMING  
SINGLE PANEL

## FURRING FOR 3/8" HEADER

5/WSWH4



DESIGNER IS PERMITTED TO MODIFY  
DETAILS FOR SPECIFIC CONDITIONS.



SECTION  
DOUBLE 2X12 FRAMING  
SINGLE PANEL

## FURRING FOR DOUBLE 2X12 HEADERS

6/WSWH4