

PMMA Waterproofing & Surfacing Systems

PMMA Liquid-Applied Solutions



 **siplast**[®]

With you every step of the way


High Performance. Quick Application. Unlimited Possibilities.

Siplast Terapro Systems


Siplast's premium liquid-applied PMMA-based Terapro Waterproofing & Surfacing Systems provide our highest level of waterproofing and concrete protection for parking decks and ramps, pedestrian walkways, balconies, and vehicular traffic applications. The science of PMMA provides exceptional performance advantages and faster cure times than traditional liquid systems.

Siplast Terapro Systems encompass a comprehensive portfolio of premium solutions. From waterproofing resins and wear layers to several surfacing options and application accessories, Terapro has your coating needs covered. And to meet your project's requirements, Terapro Systems can be tailored to provide specific levels of protection and guarantees.

Application Advantages

 Fast cure time*

 Abrasion resistance†

 Resistance to ordinary weather conditions

 UV resistance

 Durability

 Low VOC

 Solvent-free

 Isocyanate-free



A Terapro System can be applied and trafficked within an 8-hour day,* which is a significant financial and practical benefit for commercial buildings. By comparison, other liquid systems can require a cure time of up to three days before they can withstand traffic without sustaining damage. Additionally, Terapro solutions are not highly sensitive to atmospheric humidity during application, and Terapro base and flashing resins can be applied in temperatures as low as 23°F, which offers a great amount of flexibility with installation.

PMMA for Waterproofing



First synthesized in the 1930s, polymethyl methacrylate (PMMA) soon found uses in everything from aircraft windshields to dentures. In the 1970s, a more flexible PMMA formulation for coatings was developed for waterproofing. Today, Siplast Terapro Waterproofing & Surfacing Systems offer all the benefits of PMMA technology with customized liquid solutions that are backed by Siplast's proven performance, partnership, and stringent quality control.

* Ambient and substrate temperatures affect the application of Terapro Systems. Refer to applicable Terapro Installation Guide for ambient and substrate temperature guidelines and restrictions.
† Siplast warranties and guarantees do not provide coverage against abrasion. Refer to siplast.com for more information on warranty and guarantee coverage and restrictions.



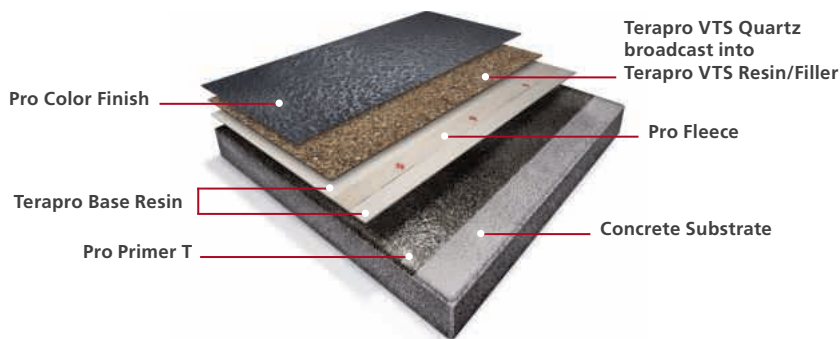
Waterproofing Systems

Terapro VTS (Versatile Traffic Surfacing) Reinforced systems are liquid-applied, PMMA-based systems providing waterproofing protection for vehicular and pedestrian surfaces over occupied and conditioned spaces. With Terapro Base Resin or Terapro Flashing Resin as the waterproofing layer, together with tough crystal quartz surfacing, these systems offer unparalleled protection and durability.

Terapro VTS Pro Fleece Reinforced

Terapro VTS Pro Fleece Reinforced system is suitable for heavy traffic zones in parking garages, including ramps and turning areas, and balconies, terraces, and walkways exposed to weather elements. With its fast-curing* application, it can help promote a quicker return to service.

Terapro Base Resin is layered with Pro Fleece reinforcement to provide a complete waterproofing solution. The system is completed with a layer of Pro Color Finish, available in 16 long-wearing color options for creating standard traffic and safety markings, and for decorative applications.



- Resists shear loads from vehicular traffic[†]
- Full-surface adhesion and helps create an impermeable membrane
- Resilient — monolithic, durable, water/UV resistant
- Fast-curing — ready for traffic in approximately 3 hours* when installed properly
- Provides protection against typical vehicular fluids[‡]
- Tested in accordance with ASTM E303 to provide skid resistance
- Can be applied in temperatures as low as 32°F
- Low VOC — formulated without solvents and isocyanate
- Contains additional wearing layer to protect the reinforced waterproofing

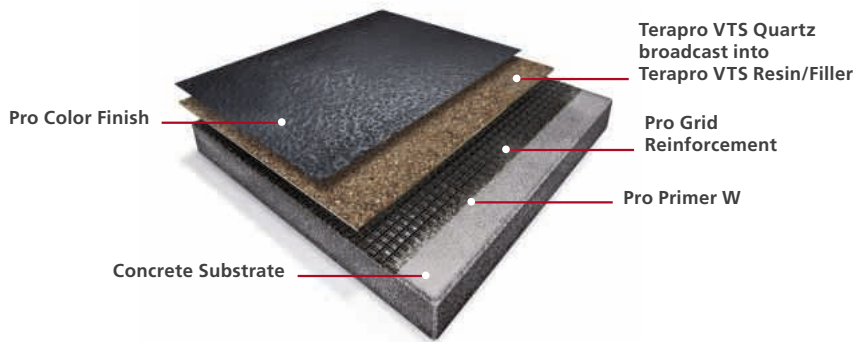


Terapro VTS Pro Grid Reinforced

Terapro VTS Pro Grid Reinforced system is suitable for parking decks and ramps, areas where crack mitigation may be required, and balconies, terraces, and walkways exposed to weather elements.

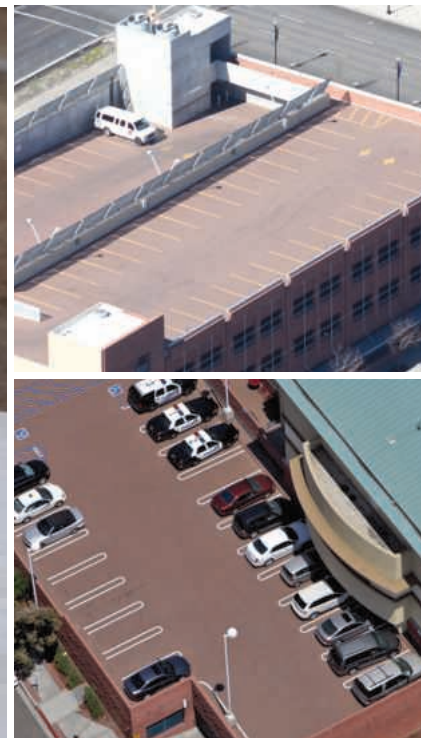
Its efficient application allows you to prime, reinforce, and waterproof in one step. It is fast-curing* to help provide a quicker return to service, and the Terapro Pro Grid reinforcement can help reduce the amount of preliminary crack treatment associated with surface preparation.

The hard-wearing VTS system is completed with a layer of Pro Color Finish, available in 16 long-wearing color options for creating traffic paths and low-maintenance color coding.



- Resists shear loads from vehicular traffic[†]
- Full-surface adhesion and creates an impermeable membrane
- Resilient — monolithic, durable, water/UV resistant
- Fast-curing — ready for traffic in approximately 3 hours* when installed properly
- Provides protection against typical vehicular fluids[‡]
- Tested in accordance with ASTM E303 to provide skid resistance
- Can be applied in temperatures as low as 32°F
- Low VOC — formulated without solvents and isocyanate
- Helps mitigate telegraphing cracks through force distribution[§]

* Ambient and substrate temperatures affect the application of Terapro Systems. Refer to applicable Terapro Installation Guide for ambient and substrate temperature guidelines and restrictions.
[†] Siplast warranties and guarantees do not provide coverage against traffic, physical damage/impact/abuse or exposure to chemicals and other environmental contaminants. Refer to siplast.com for more information on warranty and guarantee coverage and restrictions.
[‡] Siplast warranties and guarantees do not provide coverage against vehicular fluids and deicing chemicals. Refer to siplast.com for more information on warranty and guarantee coverage and restrictions.
[§] Siplast guarantees do not provide coverage for cracking. Refer to siplast.com for more information on guarantee coverage and restrictions.



Waterproofing Resins

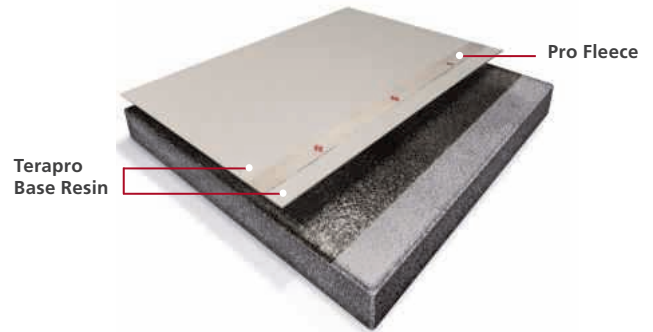
Terapro Base Resin and Terapro Flashing Resin are liquid PMMA waterproofing resins that are catalyzed with Pro Catalyst to create a tough and durable monolithic protection system for any vehicular and pedestrian waterproofing projects.

For use over occupied and conditioned spaces, Terapro Base Resin and Terapro Flashing Resin can be used as a standalone waterproofing system, or as the waterproofing layer of the Terapro VTS Pro Fleece Reinforced system. Terapro Base Resin is also utilized as a waterproofing solution for crack treatment and repair.

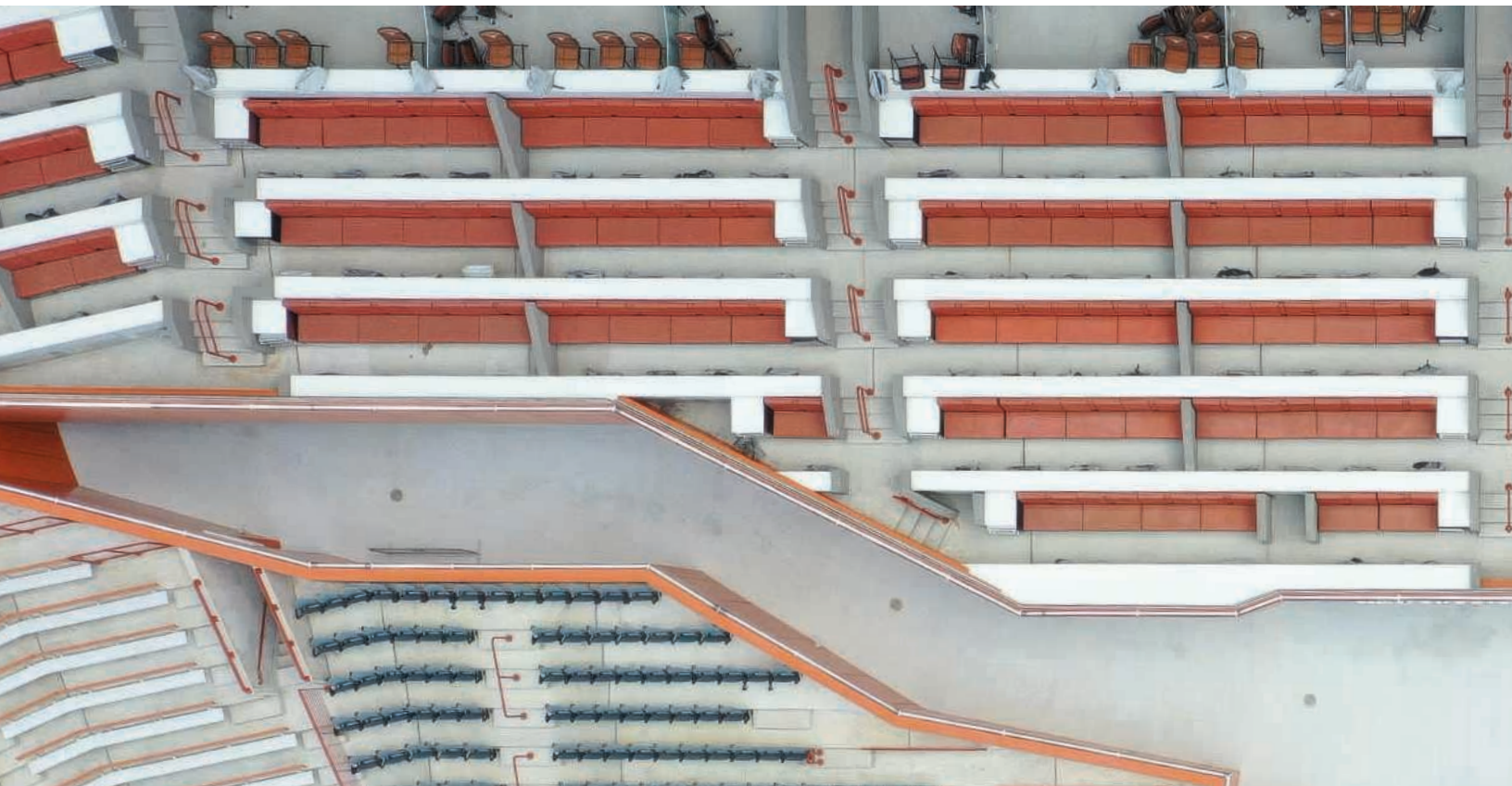
Terapro Base Resin

A multi-component, fast-curing, flexible PMMA resin for use in horizontal applications to create a seamless monolithic waterproofing system. Terapro Base Resin, when catalyzed, is combined with Pro Fleece to form the monolithic, reinforced waterproofing layer of the Terapro and Terapro VTS Systems.

- Color Available: 1013 Oyster White
- Typical Set/Cure Times 68°F (20°C): Resists rainwater wash-off in 30 minutes, ready for next coat in 30 minutes, pedestrian and vehicular trafficable in 2 hours*
- Low VOC Content: < 25 g/L (catalyzed) EPA test method 24



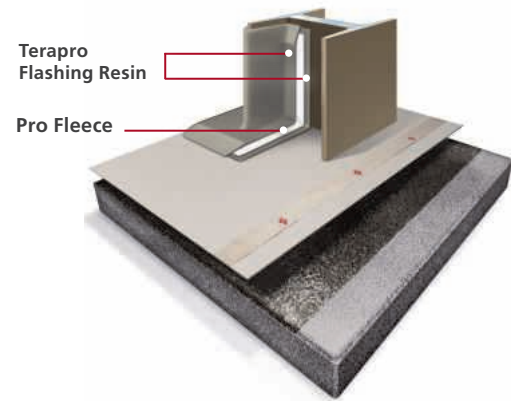
Oyster White



Terapro Flashing Resin

A multi-component, fast-curing, flexible PMMA resin for use in vertical applications and around penetrations. Terapro Flashing Resin, when catalyzed, is combined with Pro Fleece to form a monolithic, reinforced flashing system for use in conjunction with Terapro and Terapro VTS Waterproofing Systems.

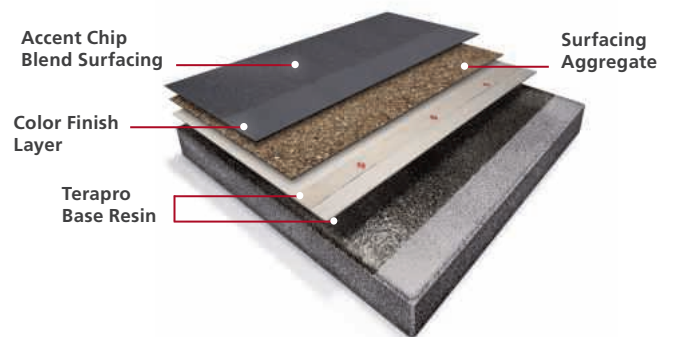
- Color Available: 7032 Pebble Grey
- Typical Set/Cure Times 68°F (20°C): Resists rainwater wash-off in 30 minutes, ready for next coat in 45 minutes, pedestrian and vehicular trafficable in 2 hours*
- Low VOC Content: < 25 g/L (catalyzed) EPA test method 24



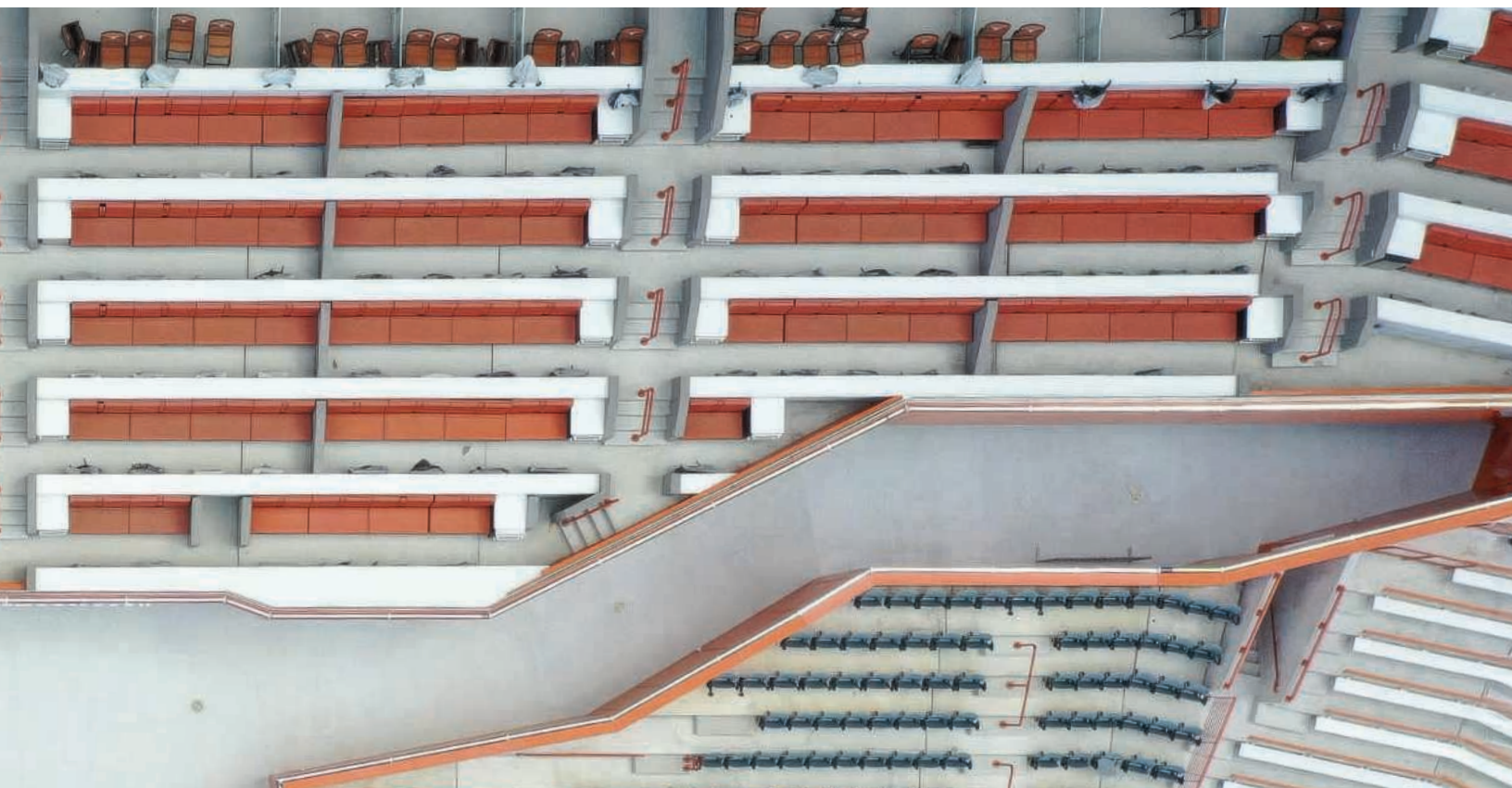
Pebble Grey

Terapro Reinforced Systems

Terapro Reinforced Systems are liquid-applied PMMA-based waterproofing solutions for pedestrian surfaces, such as balconies and walkways, over occupied and conditioned spaces. These systems use a Terapro Base Resin or Terapro Flashing Resin as the waterproofing layer, combined with Pro Natural Quartz or Pro Texture Beads surfacing, to create a protective, long-lasting surface that can withstand heavy foot traffic.



* Ambient and substrate temperatures affect the application of Terapro Systems. Refer to applicable Terapro Installation Guide for ambient and substrate temperature guidelines and restrictions.



Concrete Protection

Concrete surfaces with a high level of vehicular and pedestrian traffic must be able to withstand extreme wear and tear from weathering, foot traffic, automotive fluids, and environmental contaminants. As these spaces are also highly visible, aesthetic appeal is also important.

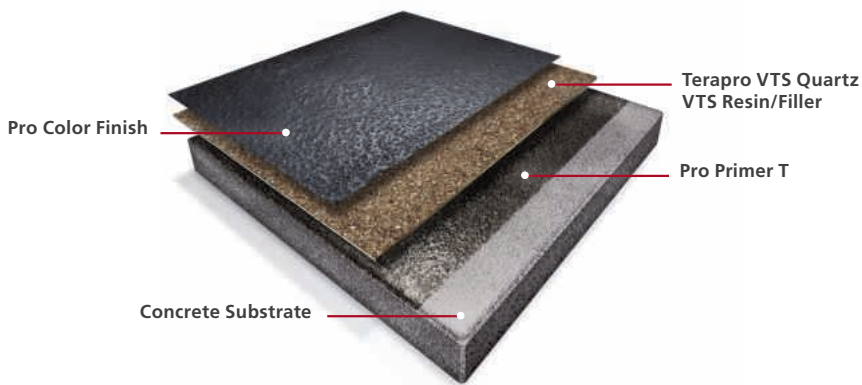
These Terapro solutions provide premium concrete protection with durable and aesthetically pleasing surfacing options.



Terapro VTS Unreinforced | For Vehicular & Pedestrian Traffic Areas

Terapro VTS Unreinforced provides concrete protection for vehicular and pedestrian surfaces in areas over unoccupied spaces. It is suitable for heavy traffic zones in parking garages, including ramps and turning areas, and balconies, terraces, and walkways exposed to weather elements.

The liquid-applied PMMA resin-based system with tough crystal quartz surfacing provides exceptional durability with flexible and fast-curing application to help meet scheduling requirements.* The surface is finished with a choice of 16 long-wearing color options appropriate for traffic paths and low-maintenance markings for parking garages.



- Resists shear loads from vehicular traffic[†]
- Full-surface adhesion helps create an impermeable membrane
- Fast-curing — ready for traffic in approximately 3 hours* when installed properly
- Provides protection against typical vehicular fluids[‡]
- Tested in accordance with ASTM E303 to provide skid resistance
- UV stable
- Can be applied in temperatures as low as 32°F
- Low VOC — formulated without solvents and isocyanate

* Ambient and substrate temperatures affect the application of Terapro Systems. Refer to applicable Terapro Installation Guide for ambient and substrate temperature guidelines and restrictions.

[†] Siplast warranties and guarantees do not provide coverage against traffic, physical damage/impact/abuse, or exposure to chemicals and other environmental contaminants. Refer to siplast.com for more information on warranty and guarantee coverage and restrictions.

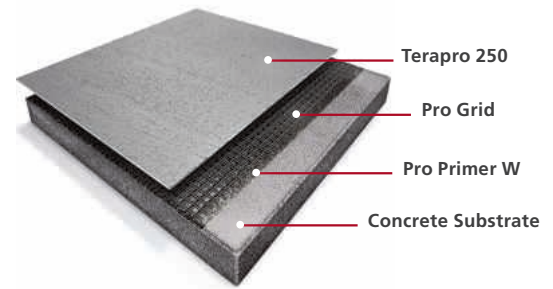
[‡] Siplast warranties and guarantees do not provide coverage against vehicular fluids and deicing chemicals. Refer to siplast.com for more information on warranty and guarantee coverage and restrictions.



Terapro 250 | For Vehicular Traffic Areas

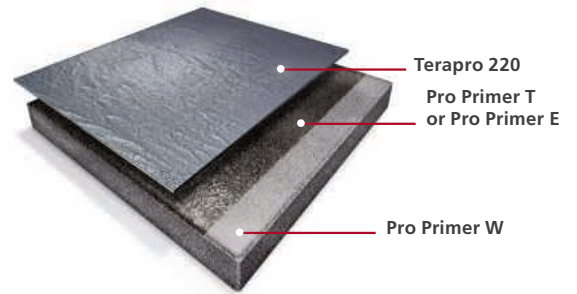
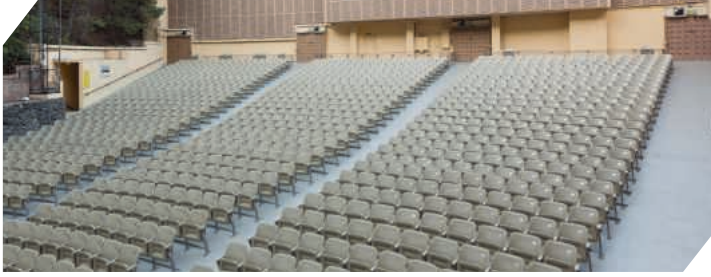
Terapro 250 is a surfacing layer used for vehicular applications. It provides PMMA waterproofing performance and added concrete protection for parking decks and ramps, vehicular areas, and pedestrian walkways over unoccupied space. Its PMMA properties allow it to achieve both a bond to the substrate and an interlaminar bond. This tenacious adhesion results in improved resistance to disbonding under the loads imposed by heavy vehicular traffic. Terapro 250's bond strength, together with the tough crystal quartz surfacing, offers exceptional durability. The completed high-mil thickness application is monolithic and seamless.

The liquid-applied, layered application consists of one coat of primer, a filled waterproofing layer, a hard-wearing quartz surfacing, and a durable pigmented finish layer. Reinforced systems for use over occupied interior spaces include a polyester fleece fabric for additional protection. Each layer of the system consists of a catalyzed PMMA resin.



- Suitable for parking decks, ramps, vehicular areas, and pedestrian walkways over unoccupied space
- Fast-curing — ready for traffic in approximately 3 hours* when installed properly
- Provides protection against typical vehicular fluids[†]
- Tested in accordance with ASTM E303 to provide skid resistance
- UV stable
- Can be applied in temperatures as low as 32°F
- Available in 6 colors





Terapro 220 | For Pedestrian Areas

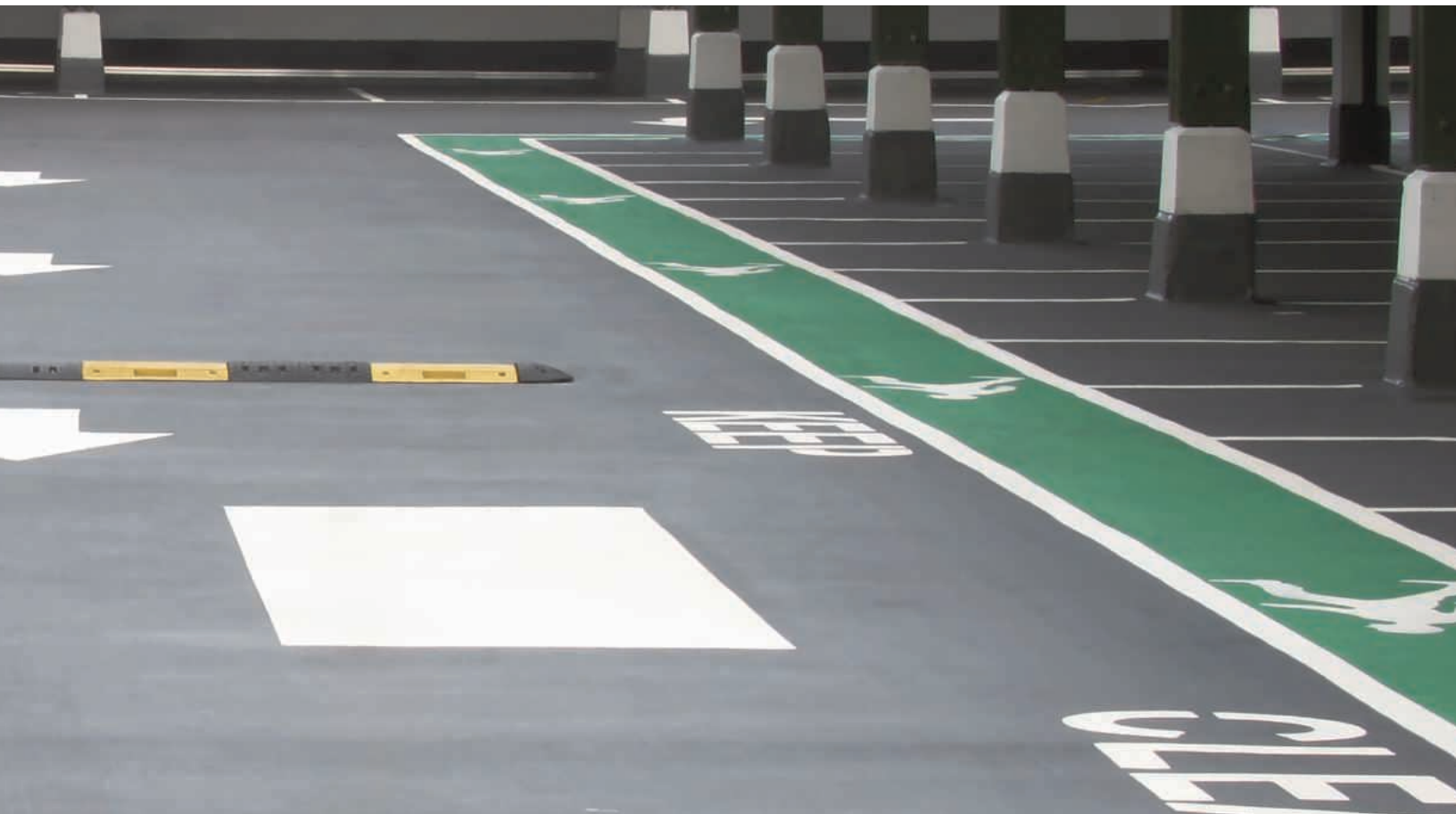
Terapro 220 is a liquid-applied surfacing layer used in a Terapro or Terapro VTS System. It can also be used with just a primer layer to create a concrete protection system. Terapro 220 can also be used with Terapro reinforced systems for use over occupied/conditioned interior spaces and include a polyester fleece fabric for additional waterproofing protection. Each layer of the system consists of a catalyzed PMMA resin. The completed high-mil thickness application is resilient, monolithic, seamless, durable, and provides protection against UV exposure, ordinary foot traffic, mechanical abuse, and many environmental contaminants.‡

- Suitable for balconies, terraces, and pedestrian walkways over unoccupied space
- Fast-curing — ready for traffic in approximately 3 hours* when installed properly
- Tested in accordance with ASTM E303 to provide skid resistance
- UV stable
- Can be applied in temperatures as low as 32°F
- Aggregate, color, and resin in one package allows you to catalyze, mix, and go
- Available in 6 colors

* Ambient and substrate temperatures affect the application of Terapro Systems. Refer to applicable Terapro Installation Guide for ambient and substrate temperature guidelines and restrictions.

† Siplast warranties and guarantees do not provide coverage against vehicular fluids and deicing chemicals. Refer to siplast.com for more information on warranty and guarantee coverage and restrictions.

‡ Siplast warranties and guarantees do not provide coverage against traffic, physical damage/impact/abuse, or exposure to chemicals and other environmental contaminants. Refer to siplast.com for more information on warranty and guarantee coverage and restrictions.



Finishes & Surfacing Options

Siplast Terapro Systems can be surfaced with hard-wearing Pro Natural Quartz and Pro Color Finish for high-traffic conditions or Pro Color Finish and Pro Texture Beads for lighter-duty applications. Both surfacing options offer a solid-color, clean appearance.

Easy-to-clean Terapro Pro Color Finish is available in a variety of standard colors, which can be used alone or applied in patterns for dramatic effects or practical purposes such as designating traffic paths.

Pro Accent Chips, available in a black/white or black/tan blend, can be broadcast into the wet Pro Color Finish just following application, creating a variegated aesthetic, breaking up the monolithic appearance of the solid color finish.

To request a physical sample, please contact your Siplast Representative.

Pro Color Finish with Pro Natural Quartz



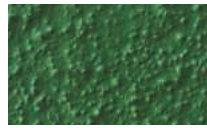
Light Ivory #1015



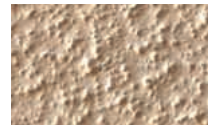
Silk Grey #7044



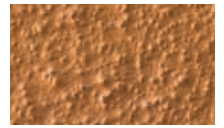
Terracotta #8081



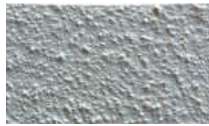
Leaf Green #6002



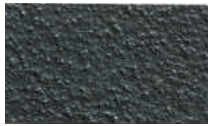
Grey Beige #1019



Orange Brown #8023



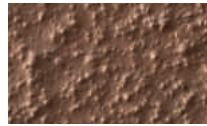
Traffic Grey A #7042



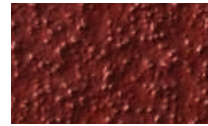
Traffic Grey B #7043



Light Grey #7035

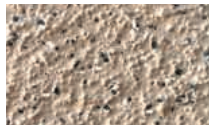


Pale Brown #8025



Red #311910

Pro Color Finish with Pro Accent Chips



Tan PAC 50



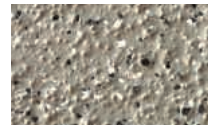
Camel PAC 60



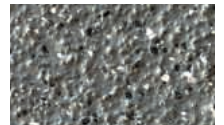
Brown PAC 70



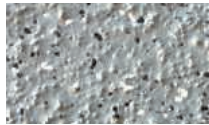
Red PAC 80



Patina PAC 40



Med Gray PAC 30



Lt. Gray PAC 20










White PAC 10

NOTE: Colors require a batch minimum. Consult your Siplast representative for more details. The color samples in this document may not precisely match their physical equivalents. Always refer to physical samples before making your color choices.



Terapro PMMA Product Portfolio

PRODUCT	DESCRIPTION	FEATURES *	PACKAGING
Primers			
Pro Primers - Pro Primer E - Pro Primer W - Pro Primer R - Pro Primer T	Two-component, resin primers for use over qualified/approved concrete substrates prior to application	<ul style="list-style-type: none"> - Resins are translucent - Pro Primer E is also used as an accessory to STP roofing and waterproofing systems - Pro Primer W, Pro Primer R, and Pro Primer T Resins can be covered with Terapro Resins a minimum of 45 minutes following application - Pro Primer W Resin can be left exposed to UV and weather elements for up to 6 months 	10 kg (22 lb.) resealable metal drum 
Resins			
Terapro Base Resin	High-performance, multi-component, fast-curing PMMA resin used with Pro Fleece to form the reinforced layer	<ul style="list-style-type: none"> - Available in summer and winter grades - Available in Oyster White (#1013) - Typical Set/Cure Times 68°F (20°C): Rainproof in 30 minutes, ready for next coat in 45 minutes, pedestrian and vehicular trafficable in 2 hours † - Low VOC Content: < 25 g/L (catalyzed) EPA Test method 24 	10 kg (22 lb.) resealable metal drum 
Terapro Flashing Resin	High-performance, multi-component, flexible PMMA resin, when catalyzed, is combined with Pro Fleece in flashing applications in conjunction with Terapro Systems	<ul style="list-style-type: none"> - Available in summer and winter grades - Available in Pebble Gray (#7032) - Typical Set/Cure Times 68°F (20°C): Rainproof in 30 minutes, ready for next coat in 45 minutes, pedestrian and vehicular trafficable in 2 hours † - Low VOC content: < 25 g/L (catalyzed) EPA test method 24 	10 kg (22 lb.) resealable metal drum 
Terapro VTS Resin	Multi-component, fast-curing, PMMA resin, that when combined with Terapro VTS Quartz Filler and catalyzed, is used as a waterproofing and/or surfacing layer of Terapro Systems	<ul style="list-style-type: none"> - Available in translucent tan color - Must be mixed with Terapro VTS Filler and Pro Catalyst prior to application - Typical Set/Cure Times 68°F (20°C): Rainproof in 30 minutes, ready for next coat in 2 hours, pedestrian and vehicular trafficable in 1 hour † - Low VOC content: < 25 g/L (catalyzed) EPA test method 24 	10 kg (22 lb.) resealable metal drum 
Terapro VTS Filler	A natural crushed quartz aggregate used as a filler for Terapro VTS Resin	<ul style="list-style-type: none"> - Natural-colored, crushed quartz aggregate - Available in natural light gray color 	22 kg (48.5 lb.) net contents plastic pail 
Color and Surfacing Finish Layers			
Terapro 220 Resin Terapro 250 Resin	A blend of pigmented Terapro PMMA resin and aggregate. When catalyzed, Terapro Resin/Aggregate is used as surface protection providing skid-resistant‡ properties.	<ul style="list-style-type: none"> - Aggregate, color, and resin in one package allows you to catalyze, mix, and go - Combined with the fast-curing properties of PMMA make Terapro 220/250 application extremely efficient - Multiple Colors Available: Beige, Brown, and Gray - Quick Set/Cure Times 68°F (20°C): Rainproof in 30 minutes, pedestrian and vehicular trafficable in 2 hours † - Low VOC Content: < 25 g/L (catalyzed) EPA Test Method 24 	25 kg (55 lb.) resealable metal drum 
Pro Color Finish Resin	Pigmented, multi-component, fast-curing PMMA resin for use in Terapro Systems	<ul style="list-style-type: none"> - Available in a variety of standard colors - Can be used alone or applied in patterns for dramatic effects or practical purposes such as designating private traffic control paths - Typical Set/Cure Times 68°F (20°C): Rainproof in 30 minutes, ready for next coat in 45 minutes, pedestrian and vehicular trafficable in 2 hours † - Low VOC Content: < 25 g/L (catalyzed) EPA test method 24 	10 kg (22 lb.) resealable metal drum 

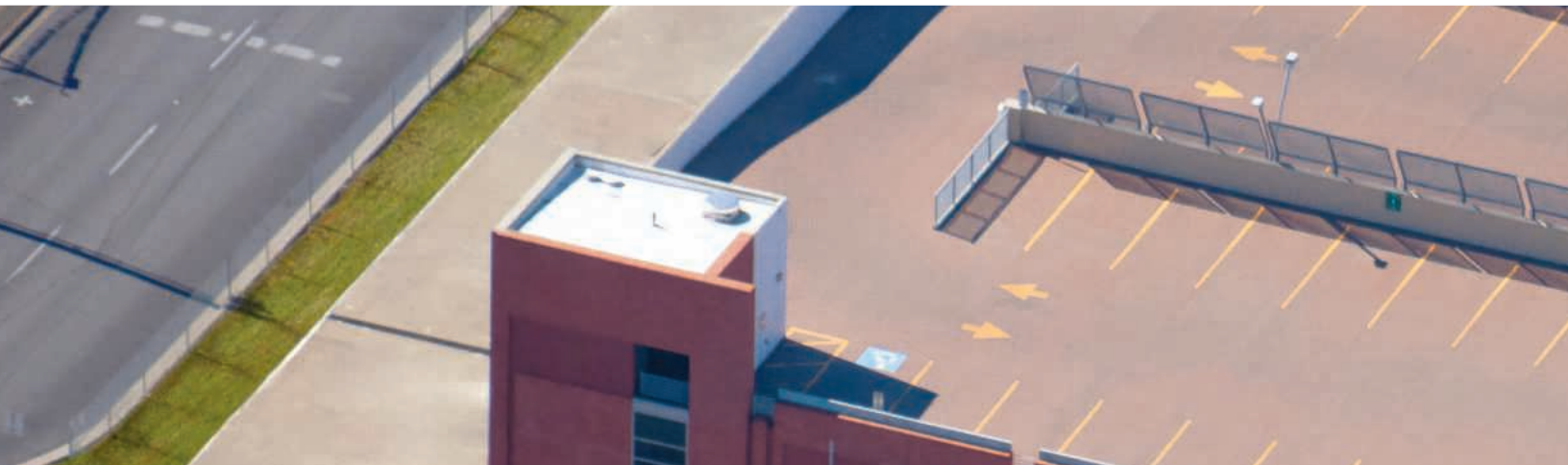
* Values stated are approximate and subject to normal manufacturing variation. These values are not guaranteed and are provided solely as a guide.

† Ambient and substrate temperatures affect the application of Terapro Systems. Refer to applicable Terapro Installation Guide for ambient and substrate temperature guidelines and restrictions.

‡ Siplast warranties and guarantees do not provide coverage against abrasion. Refer to siplast.com for more information on warranty and guarantee coverage and restrictions.

Terapro PMMA Product Portfolio

PRODUCT	DESCRIPTION	FEATURES*	PACKAGING
Resins			
Pro Matrix Resin	Multi-component, fast-curing, fibrated PMMA resin for specialty flashing applications	<ul style="list-style-type: none"> - For use in situations where application of fleece-reinforced and Terapro flashing is impractical due to flashing configuration - Typical Set/Cure Times 68°F (20°C): Rainproof in 30 minutes, ready for next coat in 45 minutes, pedestrian and vehicular trafficable in 2 hours† 	10 kg (22 lb.) resealable metal drum
Pro Mortar	High-density, multi-component, fast-curing, PMMA resin-based mortar used to patch concrete surfaces prior to application of Terapro Systems	<ul style="list-style-type: none"> - Two-component kit consisting of Pro Mortar Resin and Pro Mortar Aggregate - Once mixed, Pro Mortar can be catalyzed with four bags of Pro Catalyst to initiate cure - Typical Set/Cure Times 68°F (20°C): Rainproof in 30 minutes, ready for next coat in 45 minutes, pedestrian and vehicular trafficable in 1 hour† - Low VOC Content: < 25 g/L (catalyzed) EPA test method 24 	<ul style="list-style-type: none"> - Two bags of Part B aggregate are required per pail of Part A liquid - Pro Mortar Resin (Part A): 8.26 kg (18.2 lb.) pail - Pro Mortar Aggregate (Part B): 50 kg (110.4 lb.) bag (2 bags @ 25 kg each)
Pro Paste Resin	High-performance multi-component, fast-curing, PMMA resin paste used for remediation of depressions in substrate surfaces or other surface irregularities prior to application of Terapro Systems	<ul style="list-style-type: none"> - Available in Pebble Gray (#7032) - Typical Set/Cure Times 68°F (20°C): Rainproof in 30 minutes, ready for next coat in 60 minutes, pedestrian and vehicular trafficable in 3 hours† - Low VOC Content: < 25 g/L (catalyzed) EPA test method 24 	10 kg (22 lb.) resealable metal drum
Aggregate			
Pro Natural Quartz	Natural silica aggregate used as a surfacing for Terapro Systems	<ul style="list-style-type: none"> - Helps generate a skid-resistant surface when broadcast into the Pro Color Finish layer of a PMMA system - Natural-colored quartz aggregate 	50 lb. (22.7 kg) paper bags
Pro Texture Beads	Hardened, spherical soda-lime glass beads used in conjunction with Terapro Systems to generate a textured surface	<ul style="list-style-type: none"> - Helps generate a skid-resistant surface when broadcast into Pro Color Finish layer of waterproofing system - Natural-colored glass bead 	11 lb. (5 kg) pails



Reinforcements			
Pro Fleece	Non-woven, needle-punched polyester fabric reinforcement designed for compatibility with Terapro liquid products	<ul style="list-style-type: none"> - Resilient layer of liquid-applied waterproofing systems - Available in White - Nominal Thickness: 40 mils - Weight: 110 g/m * - Water Absorption: < 1% 	Roll Dimensions: - 12 in. x 82 ft. (305 mm x 25 m) - 12 in. x 164 ft. (305 mm x 50 m) - 25 in. x 164 ft. (635 mm x 50 m) - 41 in. x 164 ft. (1041 mm x 50 m)
Pro Grid Reinforcement	Fiberglass scrim reinforcement specially designed to embed in Pro Primer products used in Terapro Systems	<ul style="list-style-type: none"> - Helps mitigate telegraphing cracks through force distribution - Efficient installation — prime, reinforce, and waterproof in one step 	450 ft. x 3.91 ft. roll
Accessories			
Pro Prep	Clear, blended solvent used to clean the transition areas of in-place Terapro applications at tie-ins, repairs, and between staged coats of resin	<ul style="list-style-type: none"> - Can be used to clean metal and plastic surfaces prior to application of Terapro Systems - Can be utilized for cleaning spills, tools, and equipment 	1 gal. (3.8 L) resealable metal F-style can 5 gal. (19 L) resealable metal pail with pour spout and removable lid
Pro Prep M	Clear, blended solvent used to clean the transition areas of in-place Terapro applications at tie-ins, repairs, and between staged coats of resin	<ul style="list-style-type: none"> - Specifically formulated to meet the regulations for select air-quality districts; check with your Siplast representative to see if this meets your local air quality district guidelines - Can be used to clean metal and plastic surfaces prior to application of Terapro Systems - Can be utilized for cleaning spills, tools, and equipment 	5 gal. (19 L) resealable metal pail with pour spout and removable lid
Pro Catalyst Powder	White granular powder that is a reactive agent for use in initiating polymerization and curing of Terapro PMMA resins	<ul style="list-style-type: none"> - Stable if stored and used in accordance with Siplast guidelines - Must use butyl or nitrile gloves when mixing - VOC Content: 50 g/L (catalyzed) 	Vented box containing 10 premeasured 0.1 kg (3.5 oz.) plastic bags (1 kg total) with 1 tbsp. measuring scoop included
Pro Catalyst Liquid	Reactive agent used to induce curing of Terapro PMMA resins	<ul style="list-style-type: none"> - Stable if stored and used in accordance with Siplast guidelines - Must use butyl or nitrile gloves when mixing - VOC Content: < 50 g/L (catalyzed) 	Plastic container with a collapsible silicone measuring cup and a plastic tablespoon to facilitate accurate measurement
Pro Thixo	Liquid additive that increases the viscosity of Terapro and Pro Color Finish resins	<ul style="list-style-type: none"> - Imparts thixotropic properties, allowing application on sloped surfaces without slumping or sliding 	1 L (2.20 lb.) resealable metal container
Pro Grout Tape	Filament-reinforced masking tape designed for use in the construction of Terapro Systems	<ul style="list-style-type: none"> - Available in widths of 1/2 in., 3/4 in., and 1 in. - Applied over the waterproofing layers to create joints and/or color breaks 	Individual rolls in plastic bags

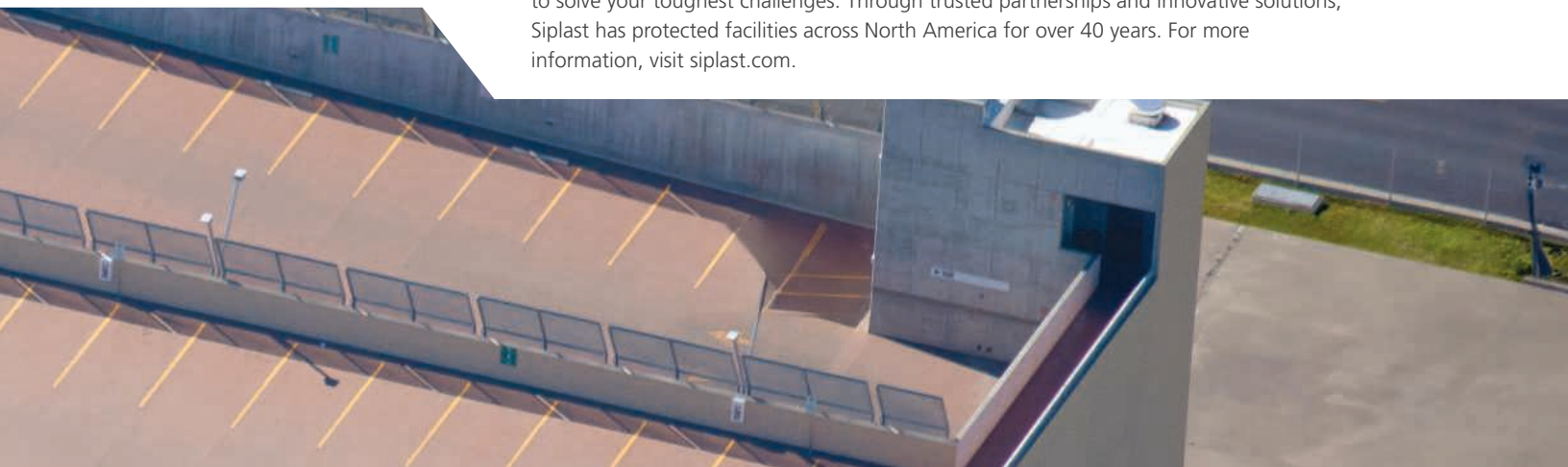
* Values stated are approximate and subject to normal manufacturing variation. These values are not guaranteed and are provided solely as a guide.

† Ambient and substrate temperatures affect the application of Terapro Systems. Refer to applicable Terapro Installation Guide for ambient and substrate temperature guidelines and restrictions.



With you every step of the way

Siplast, a leader in roofing, waterproofing, and building enclosure solutions, is working to solve your toughest challenges. Through trusted partnerships and innovative solutions, Siplast has protected facilities across North America for over 40 years. For more information, visit siplast.com.





With you every step of the way

CANADA
19748 86 Ave.
Unit 155
Langley, BC
Canada V2Y 1Z5
1.877.233.2338

UNITED STATES
14911 Quorum Dr.
Suite 600
Dallas, TX 75254
469.995.2200

Siplast.com 453139-0925

©2025 SIPLAST • SIPP027-0425