

FINAL FINISH

SPEC^CCHEM

Solution to Service

Rapid Hardening/ Polymer-Modified/ Concrete Resurfacer

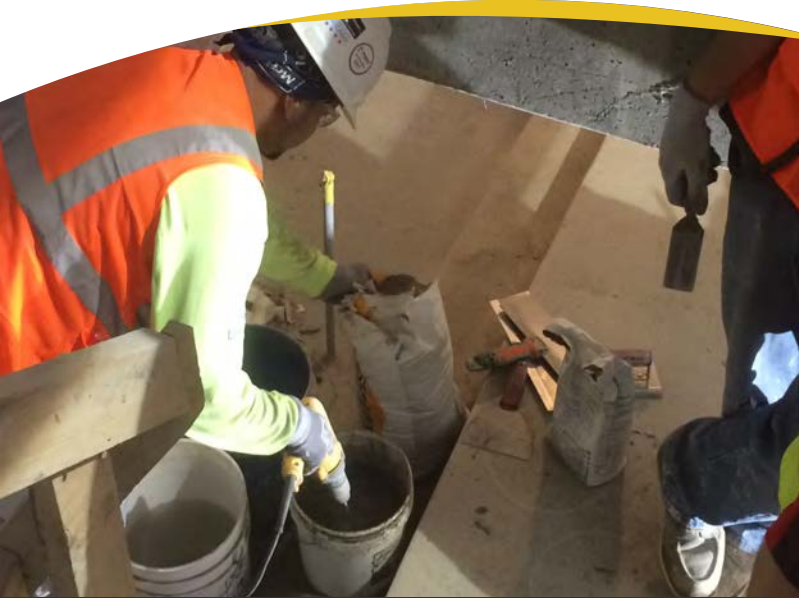
A one-component, rapid hardening, polymer modified concrete resurfacing mortar for smoothing, resurfacing, rubbing, and restoring concrete surfaces. Final Finish™ offers a unique long pot life but rapid hardening performance on the substrate to minimize waste and labor.



✓ Benefits

- Ultra Fine - no sand
- Single Component - Just add water
- Rich smooth consistency
- Long Pot Life
- For Interior or Exterior use

FINAL FINISH



Usage

- Offers superior durability for all interior and exterior, horizontal, vertical and overhead concrete applications
- Ideal as a trowel down underlayment and for repairs from a true feather edge up to 1/4"
- Can also be used as a skim patch or trowel down underlayment for horizontal repairs subjected to light traffic
- Can be used for tilt-up panels

TYPICAL TEST DATA

Pot life @ 72°F	Up to 3 hours
Compressive Strength	
28 days	1500 psi
Water Requirements	approx. 41% by Weight
40 lbs. of Final Finish™ will require:	15.8 to 16.0 pints water 1.9 to 2.0 gallons
Color	Light Gray



Packaging

- 15 lb pails
- 40 lb bags (60 bags per pallet)

Coverage of 40 lbs: approx 120 sq-ft @ 1/16"



vs.

Ardex
TWP™

Lyons
Manufacturing,
Inc.
Pavecrete®

Euclid
Chemical
TAMMSCRETE

CTS
WunderFixx®