

High Performance/High Strength Grout

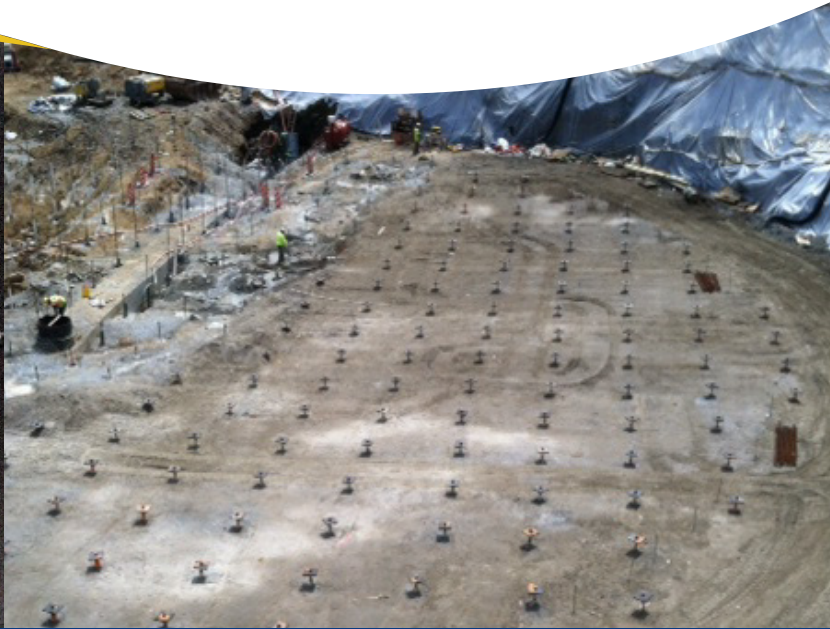
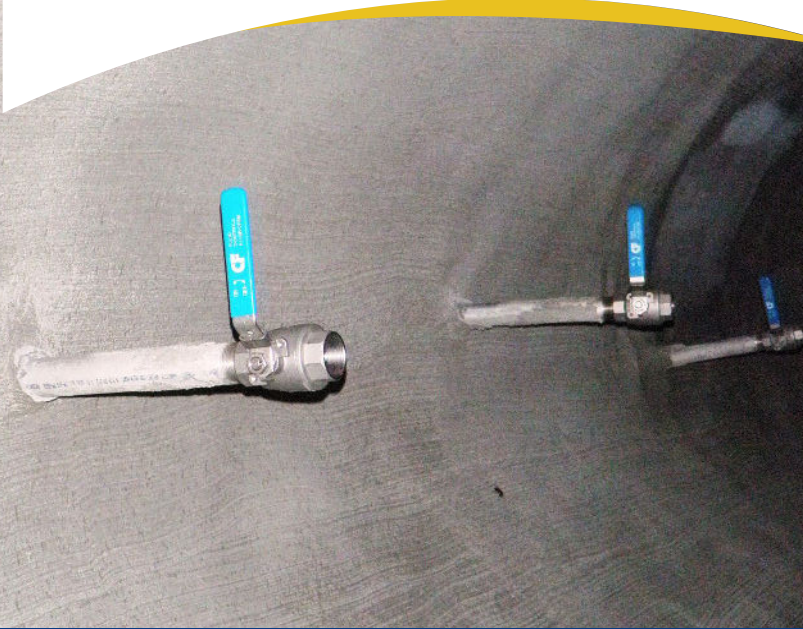
A non-shrink, non-metallic, cementitious grout that provides high early and ultimate compressive strength throughout a variety of applications. The unique formula when mixed with water, creates a grout that is flowable and pumpable. Designed to provide effective load bearing for high strength precision grouting applications such as compressors, heavy equipment foundations and tank bases.



✓ Benefits

- High early/ultimate compressive strength capability
- Minimize equipment downtime
- Controlled positive expansion for maximum effective bearing
- Non-metallic / non-corrosive
- Pourable / pumpable versatility
- Excellent freeze / thaw resistance
- Can be extended with pea stone for deep applications
- Coefficient of thermal expansion equivalent to concrete

SC PRECISION GROUT HS



Usage

For use in areas exposed to excessive vibration due to high-performance, industrial machinery.



Packaging

- 50 lb bag
- Coverage: approximately 0.42 cu. ft. in a fluid condition



Standards

- ASTM C1107, Grade A, B & C
- CRD C-621 Grade A, B & C compliant.

Typical Performance Data Per 50lb Bag

	5.5 Pints of water	6.5 Pints of water
Compressive Strength (ASTM C 109)		
24 Hours	10,150	9,360
3 Days	11,450	10,620
7 Days	14,680	13,670
28 Days	17,260	16,200
Hardened Expansion (ASTM C 1090)	0.09%	0.08%
Setting Time (Initial)	150 Minutes	150 Minutes
Setting Time (Final)	180 Minutes	180 Minutes
Consistency, flow test (2" X 4")	10"	10.5"
Mixed Density (lbs/cu-ft)	145	143
Slant Shear Bond		
3 Days	3300 psi	
7 Days	3400 psi	
28 Days	3500 psi	